

DEKALB

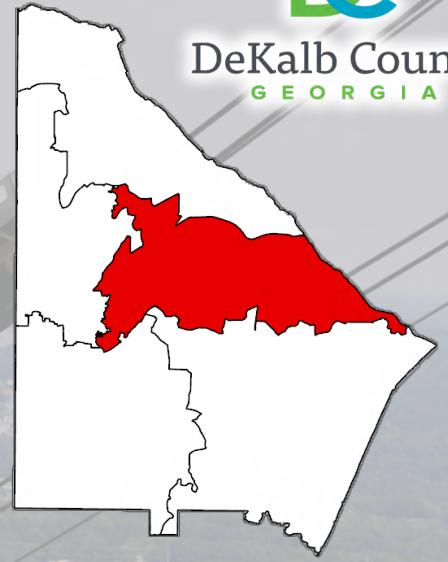
COMMISSION DISTRICT 4

PROFILE

*Produced By DeKalb County Planning and Sustainability
Long Range Division*



DeKalb County
GEORGIA



DISCOVER



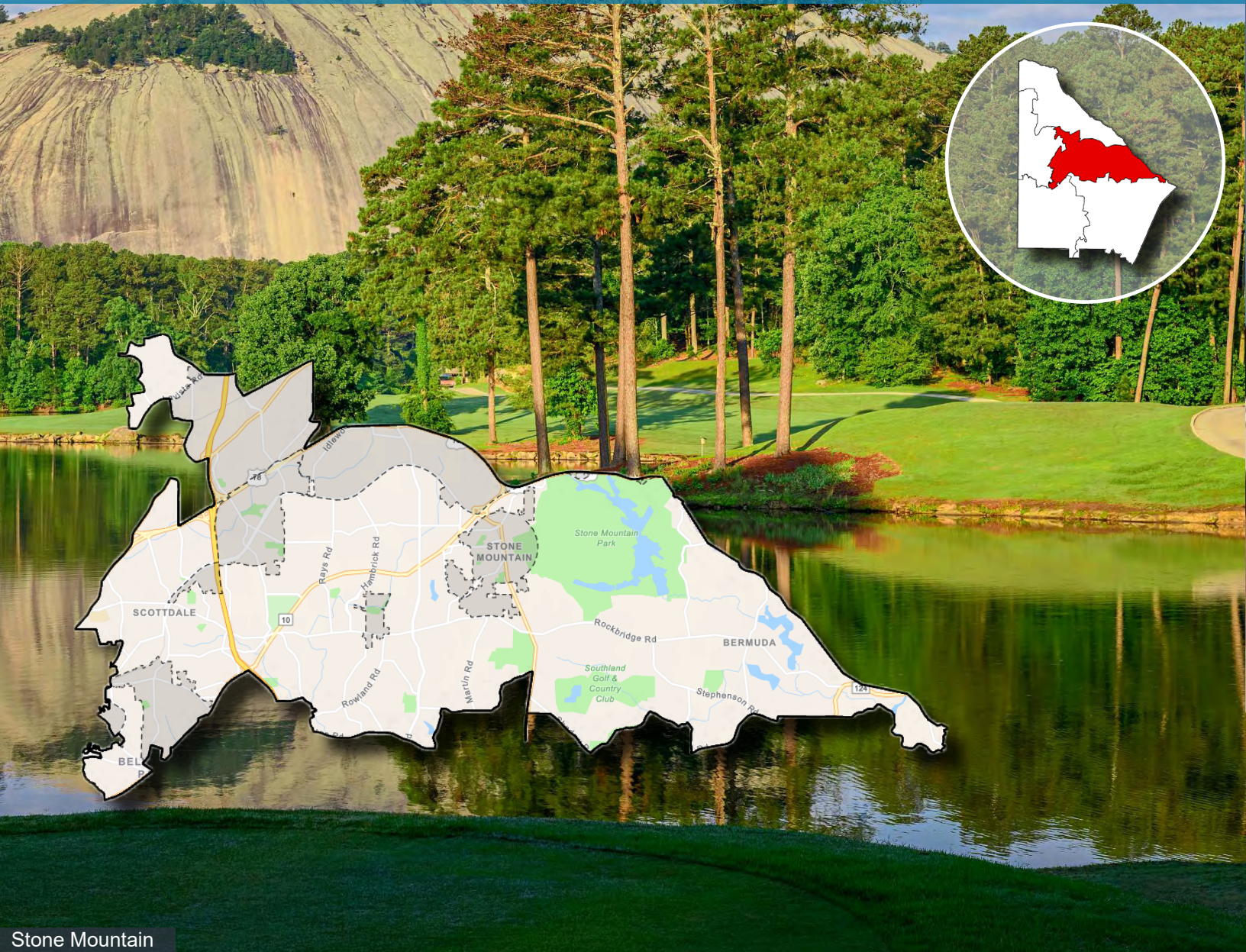
EXPERIENCE



EXPLORE

INTRODUCTION

COMMISSION DISTRICT 4



Stone Mountain

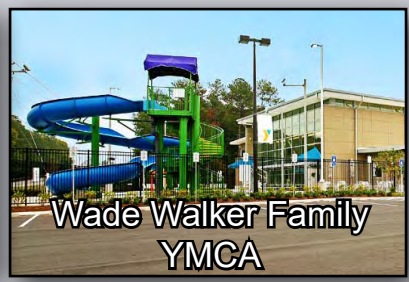
COMMISSION DISTRICT 4

Commission District 4 covers the east-central section of the county, including the cities of Stone Mountain, Clarkston, Pine Lake, and Avondale Estates, as well as part of the city of Tucker. 73% of the district's population lives in unincorporated DeKalb, while 27% lives in incorporated municipalities. The most notable landmark in the district is Stone Mountain Park, one of the county's top tourist attractions. Other notable sites include Georgia Piedmont Technical College, the Wade Walker Family YMCA, and Your DeKalb Farmer's Market. The district has been represented by Commissioner Steve Bradshaw since 2017.

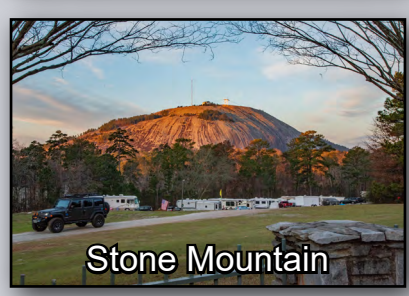
District Landmarks



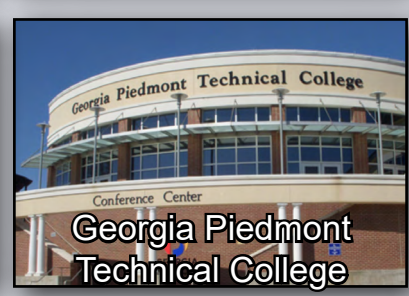
Your DeKalb Farmer's Market



Wade Walker Family YMCA



Stone Mountain



Georgia Piedmont Technical College

Steve Bradshaw has served as District 4 Commissioner since 2017



POPULATION CHARACTERISTICS

COMMISSION DISTRICT 4



12%
No High School Diploma



23%
High School Graduate



27%
Some College



38%
Bachelor's Degree or Higher

Georgia Piedmont Technical College

POPULATION TRENDS AND KEY FEATURES

The district had a population of about 155K in the 2020 Census, an increase of 18K from 2010. The population of District 4 grew sharply in the 2010s after experiencing a decline in the previous decade.

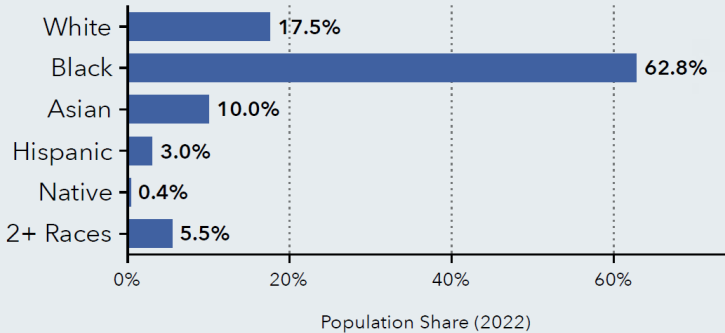
35.2

Median Age

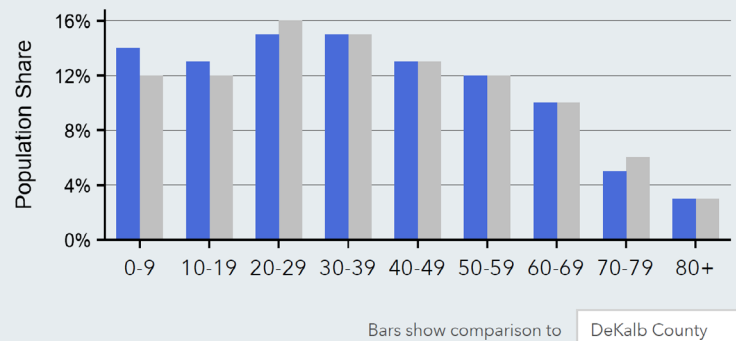


154,235
Total Population

District Population by Race



Age Profile



The age distribution of the population is fairly even and roughly in line with the county as a whole, with the largest share of the population being adults aged 20-40. African-Americans make up the largest racial group in the district at 63%. (Source: US Census)

Kensington Station Soccer Field

HOUSING CHARACTERISTICS

COMMISSION DISTRICT 4

HOUSING AND INCOME



Your DeKalb Farmer's Market

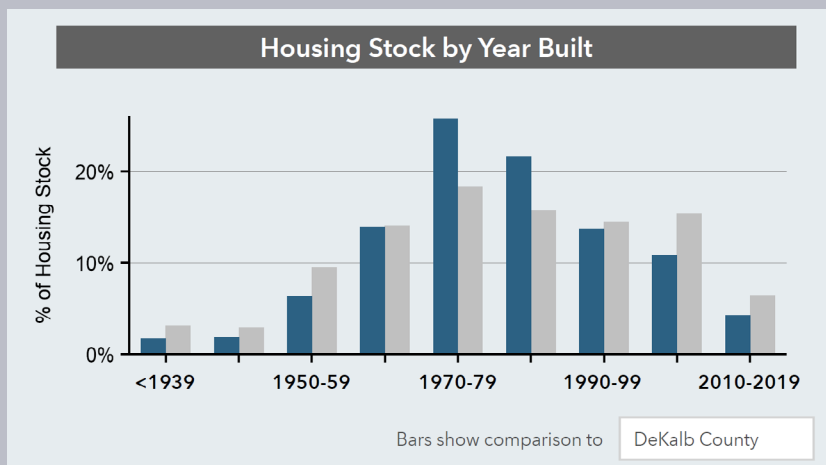
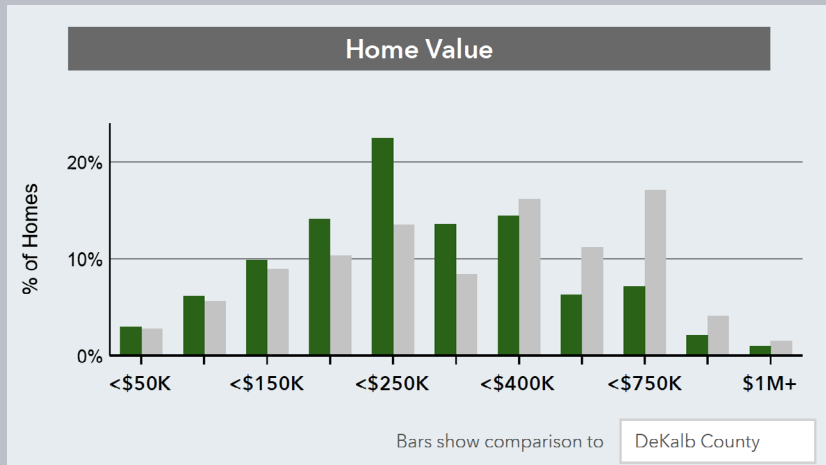
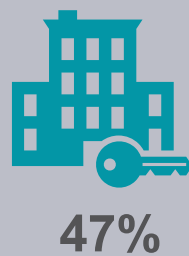
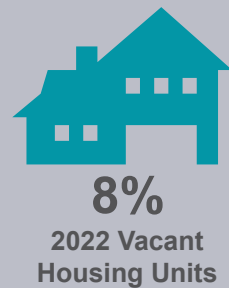
57,161
Households

2.6
Average Size
of Household

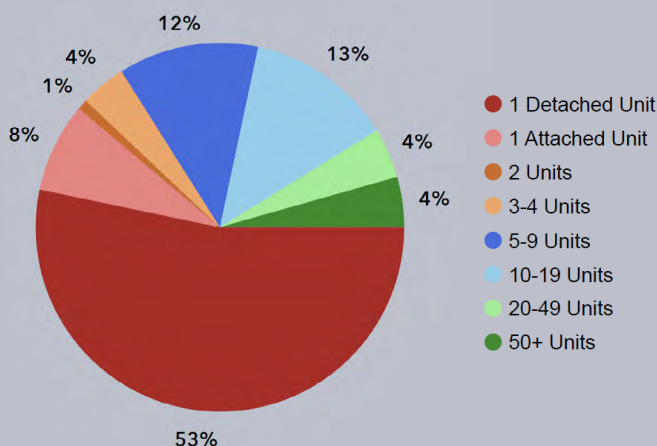


This district has a median household income of \$58K, which is below the county average of \$69K. (Source: US Census Bureau)

The vast majority of housing in the district was built post-1960, with the largest share being built in the 1960s and 1970s. New housing construction dropped off significantly during and after the Great Recession. Though it experienced less of a drop off than the county as a whole. The district is fairly evenly split between owners and renters, with owners having a slight majority. (Source: ACS 2021)



Housing by Number of Units



ECONOMIC CHARACTERISTICS

COMMISSION DISTRICT 4



EMPLOYMENT AND COMMUTE PROFILE

BUSINESS

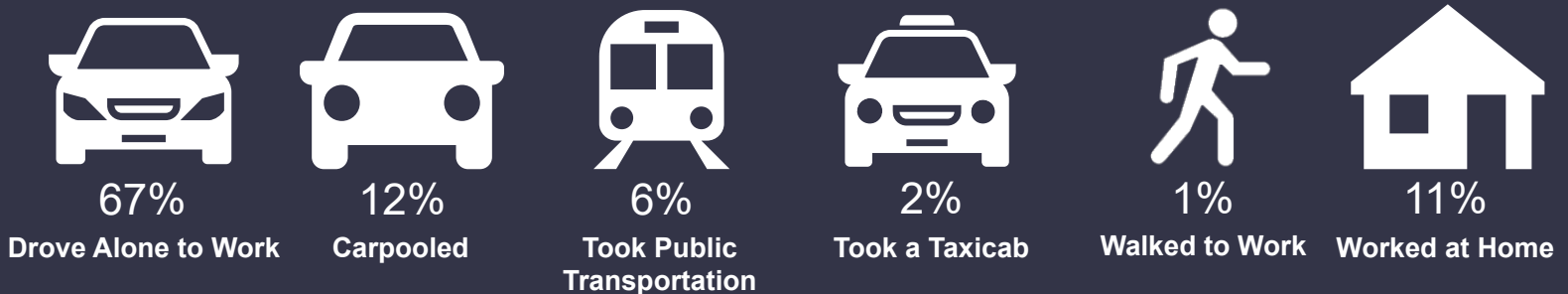


EMPLOYMENT TYPE



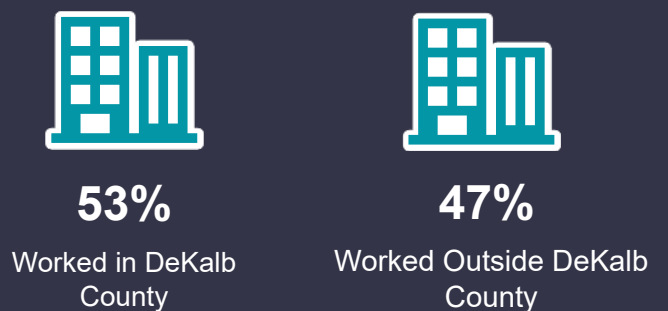
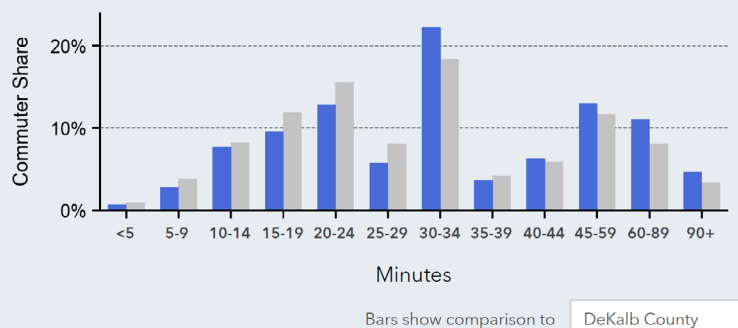
At 65%, the majority of the workforce in District 4 is classified as “White Collar”, a category that includes most office and professional jobs. The district has an unemployment rate of 5%, which is above the county average of 4%. (Source: ACS 2022)

TRANSPORTATION TO WORK



The overwhelming majority of workers in District 4 commute to work via automobile, with most of those driving alone. Despite the presence of a MARTA rail line in the district, only 6% of workers take public transportation. Most workers in the district have a commute time of between 20 and 34 minutes. The workforce is fairly evenly split between people who work inside of DeKalb County and people who work outside it. (Source: ACS 2022)

TRAVEL TIME TO WORK



CREDITS AND CONTACT

COMMISSION DISTRICT 4



Stone Mountain

District 4 Office Contact Information



Steve Bradshaw

Commissioner

srbradshaw@dekalbcountyga.gov

www.commissionerbradshaw.com

Alesia Brooks

Chief of Staff

adb Brooks@dekalbcountyga.gov



Robin Flieg

Constituent Services Coordinator

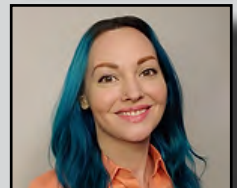
rflieg@dekalbcountyga.gov



Carrie Kordys

Communications Specialist

clkordys@dekalbcountyga.gov



DeKalb County Department of Planning and Sustainability - Long Range Planning Division

CONTACT US

Cedric Hudson
Interim Director
chudson@dekalbcountyga.gov

Sylvia Smith
Long Range Planning Manager
sasmith@dekalbcountyga.gov

Or visit us at:

www.dekalbcountyga.gov/planning-and-sustainability/planning

City Website Links:

[Avondale Estates](#)

[Clarkston](#)

[Pine Lake](#)

[Stone Mountain](#)

[Tucker](#)