

DEKALB

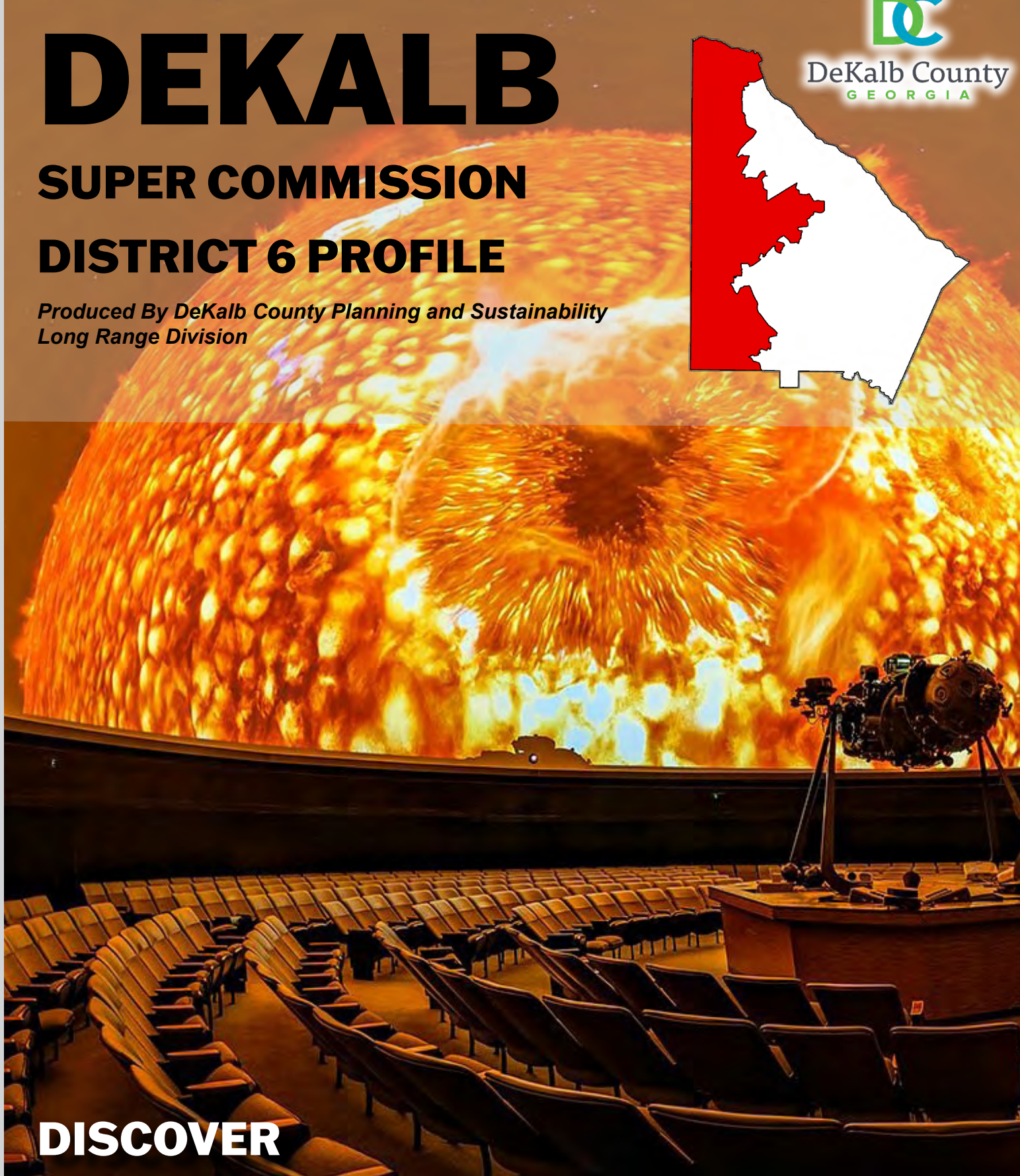
SUPER COMMISSION

DISTRICT 6 PROFILE

*Produced By DeKalb County Planning and Sustainability
Long Range Division*



DeKalb County
GEORGIA



DISCOVER



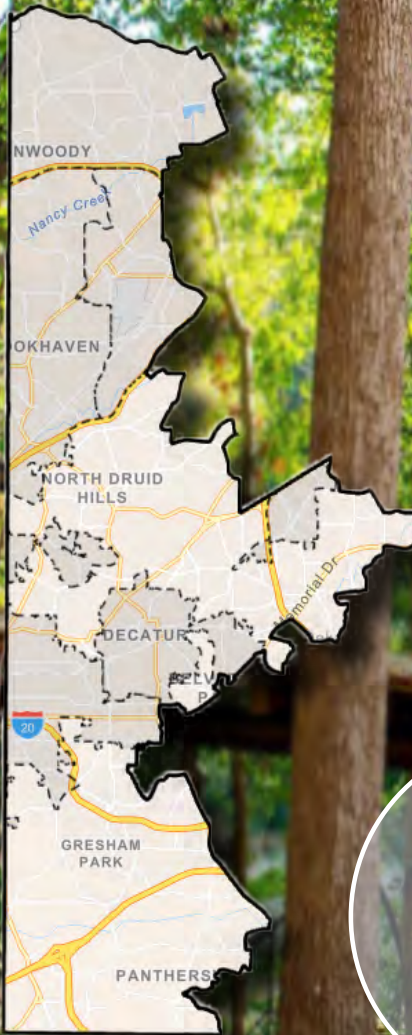
EXPERIENCE



EXPLORE

INTRODUCTION

SUPER COMMISSION DISTRICT 6



Fernbank Museum of Natural History

SUPER COMMISSION DISTRICT 6

Super Commission District 6 covers the western portion of DeKalb County, including the cities of Dunwoody, Chamblee, Brookhaven, Clarkston, Decatur, Avondale Estates and a portion of the City of Atlanta. 56% of the district's population lives in incorporated areas, while 44% lives in unincorporated DeKalb. Some notable landmarks in the district include Peachtree-DeKalb Airport in Chamblee, the Fernbank Science Center, Constitution Lake Park, and Your Dekalb Farmer's Market. The district has been represented by Commissioner Ted Terry since 2020.

District Landmarks



Peachtree DeKalb Airport



Fernbank Science Center



DeKalb Farmer's Market



Constitution Lake Park

Ted Terry has served as Super District 6 Commissioner since 2020



POPULATION CHARACTERISTICS

SUPER COMMISSION DISTRICT 6



9%

No High School Diploma



15%

High School Graduate



17%

Some College



60%

Bachelor's Degree or Higher



Fernbank Science Center

POPULATION TRENDS AND KEY FEATURES

The district had a population of about 380K in the 2020 Census, up 40K from 2010. The population of District 6 has increased steadily over the past few decades and is projected to continue increasing in coming years.

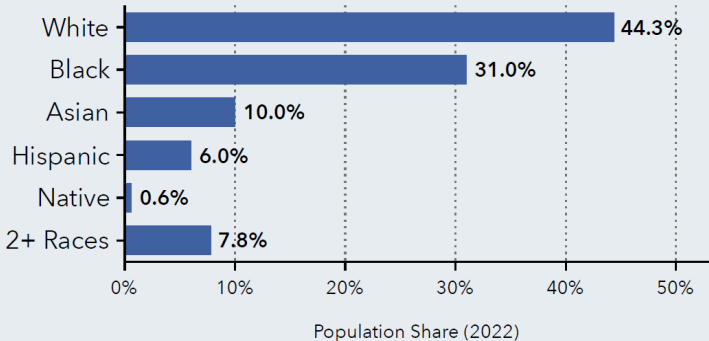
35.9

Median Age

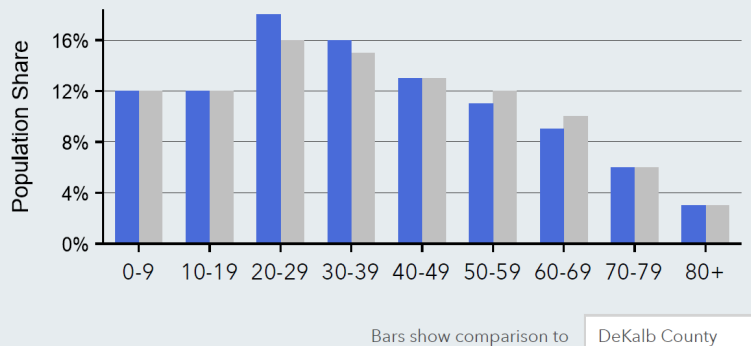


392,930
Total Population

District Population by Race



Age Profile



Bars show comparison to DeKalb County

The age profile shows population is dominated by younger adults aged 20-40. The district notably has a lower share of people in their 50s and 60s compared to the county as a whole. The district is racially diverse, with a majority of the District with Whites and Black or African Americans as the largest racial groups. (Source: US Census)



Constitution Lakes Park

HOUSING CHARACTERISTICS

SUPER COMMISSION DISTRICT 6

HOUSING AND INCOME



Doll's Head Trail

156,762
Households


2.4
Average Size
of Household


This district has a median household income of \$84K, which is above the county average of \$69K (Source: US Census Bureau).


\$84,149
Median Household
Income


\$55,219
Per Capita
Income


\$126,565
Median Net Worth


\$424,709
Median Home
Value


72%
Homeowners
with a Mortgage


\$1,249
Median
Contract Rent

The vast majority of housing in the district was built post-1950, with the largest share being built between 1950-1980. New housing construction dropped off significantly in the 2010s as a result of the Great Recession. The district's housing stock is, on average older relative to the county as a whole. The district is fairly evenly split between owners and renters, with owners having a slight majority. (Source: ACS 2021)



8%

2022 Vacant
Housing Units



46%

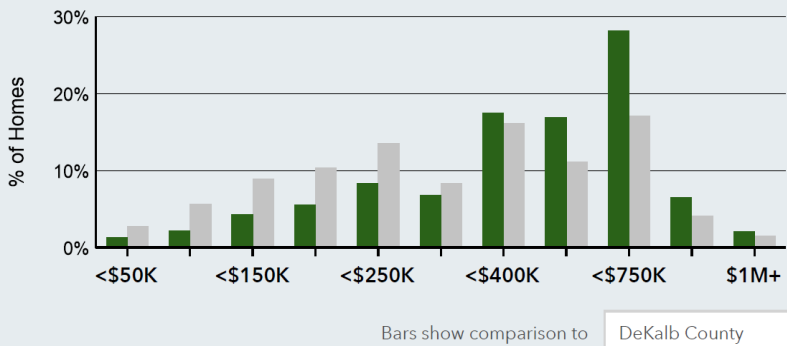
2022 Renter Occupied
Housing Units



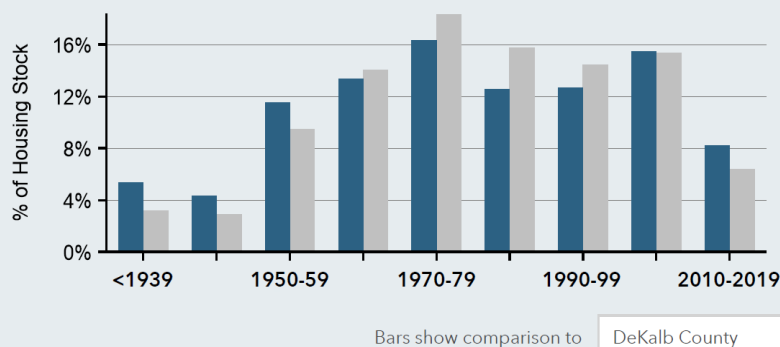
54%

2022 Owner Occupied
Housing Units

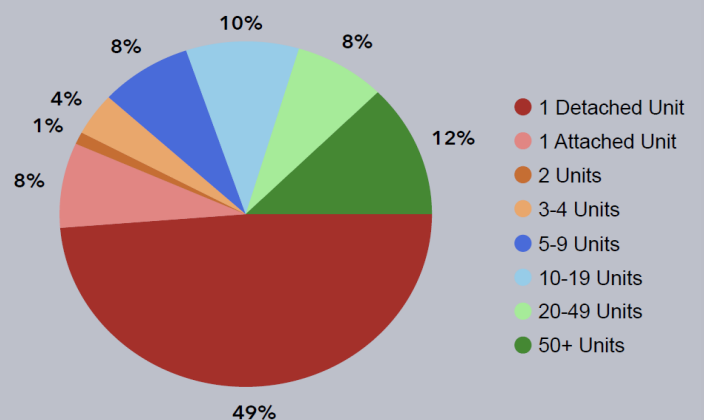
Home Value



Housing Stock by Year Built



Housing by Number of Units



ECONOMIC CHARACTERISTICS

SUPER COMMISSION DISTRICT 6

EMPLOYMENT AND COMMUTE PROFILE



DeKalb- Peachtree Airport

BUSINESS



14,241

Total Businesses



307,963

Total Employees

3.1%

Unemployment Rate

EMPLOYMENT TYPE



75%

White Collar



15%

Blue Collar



10%

Services

At 75%, the overwhelming majority of the workforce in District 6 is classified as “White Collar”, a category that includes most of office and professional jobs. The unemployment rate for the district is below the county average of 4%. (Source: ACS 2022)

TRANSPORTATION TO WORK



63%

Drove Alone to Work



10%

Carpooled



6%

Took Public Transportation



1%

Took a Taxicab



2%

Walked to Work

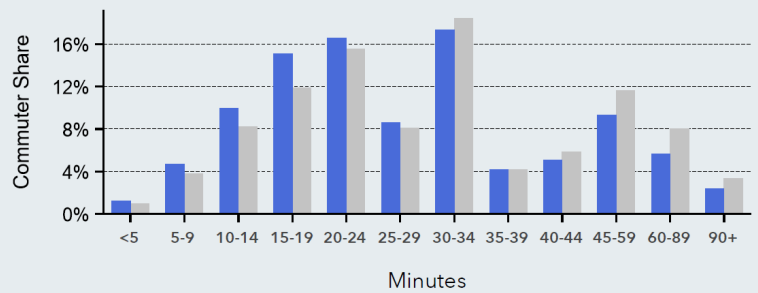


17%

Worked at Home

The overwhelming majority of workers in District 6 commute to work via automobile, with most of those driving alone. Despite the presence of a MARTA rail line in the district, only 6% of workers take public transportation. Most workers in the district have a commute time of between 15 and 34 minutes. The workforce is fairly evenly split between people who work inside of DeKalb County and people who work outside it. (Source: ACS 2022)

TRAVEL TIME TO WORK



Bars show comparison to DeKalb County



51%

Worked in DeKalb County



48%

Worked Outside DeKalb County

CREDITS AND CONTACT

SUPER COMMISSION DISTRICT 6



Michelle Obama Trail



Super District 6 Office Information

Ted Terry

Commissioner

ted@dekalbcountyga.gov

commissionertedterry.com

Kelly Cato

Chief of Staff

kecato@dekalbcountyga.gov



Miranda Rupkey

Project Administrator

msrupkey@dekalbcountyga.gov



DeKalb County Department of Planning and Sustainability - Long Range Planning Division

CONTACT US

Cedric Hudson
Interim Director
chudson@dekalbcountyga.gov

Sylvia Smith
Long Range Planning Manager
sasmith@dekalbcountyga.gov

Or visit us at:

www.dekalbcountyga.gov/planning-and-sustainability/planning

City Website Links:

[Atlanta](#)

[Avondale Estates](#)

[Brookhaven](#)

[Chamblee](#)

[Clarkston](#)

[Decatur](#)

[Dunwoody](#)