

wsp



# DeKalb County Recreation, Parks and Cultural Affairs

## Master Plan Frazier Rowe Park

## Final Meeting



# Final Master Plan Meeting

- ❖ Goal - To share the Final Master Plan with the community
- ❖ Previous Meetings
  - ❖ April 18<sup>th</sup>, 2023
  - ❖ August 17<sup>th</sup>, 2023





# Concept Plan A



## ROWE NATURE PARK

### PROPOSED CONCEPT PLAN #1 - PASSIVE PLAN

**LEGEND**

- CHILDREN'S PLAYGROUND
- HISTORIC INTERPRETATION FEATURES AND SIGNAGE
- PEDESTRIAN CIRCULATION
- BOARDWALK OVER DRAINAGE DRAVA

0 20 40 80 120 Feet  
SCALE: 1" = 40'



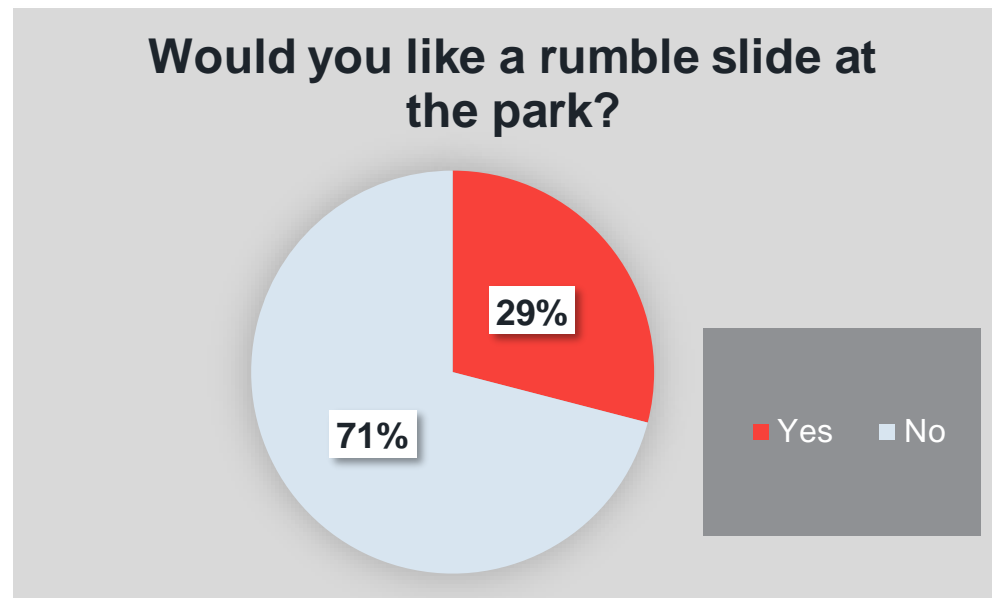


## Proposed Projects:

- ❖ Rumble slide
- ❖ Parking lot expansion
- ❖ Additional water fountain
- ❖ Playground replacement/improvement
- ❖ Trail additions/improvements



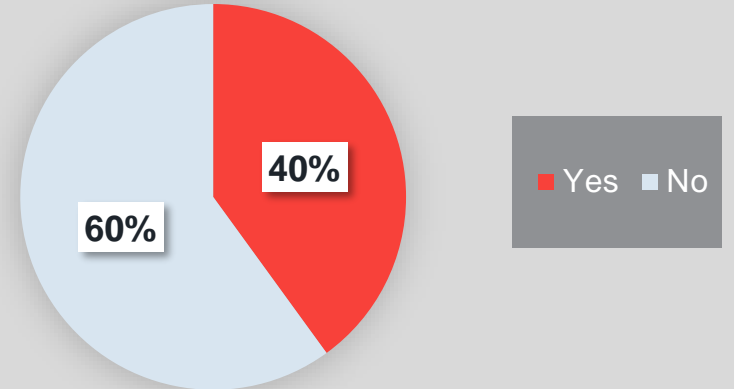
# Proposed Project: Rumble slide



# Proposed Project: Playground replacement/improvement



Would you like the playground location changed?

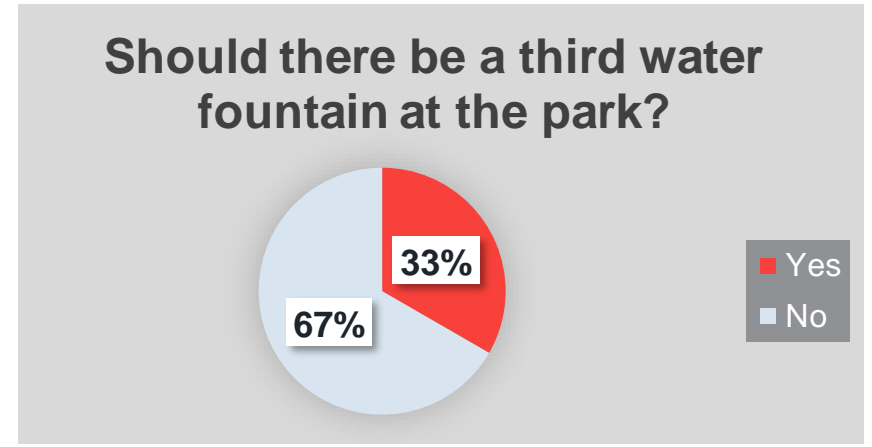
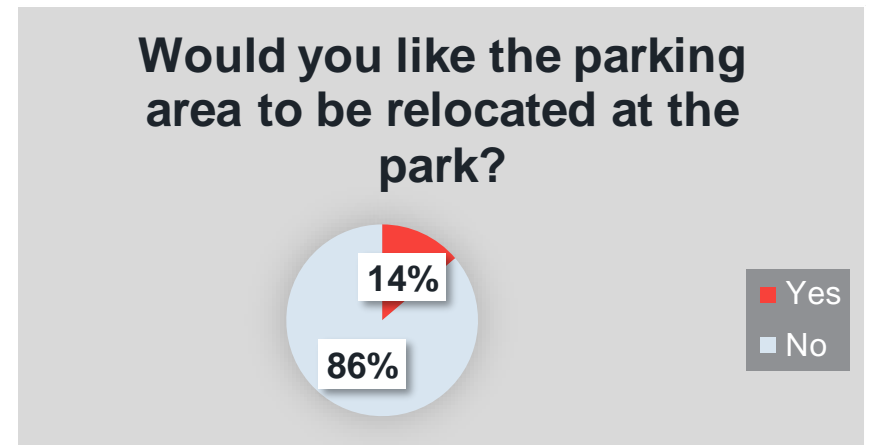




## Proposed Project: Parking lot expansion

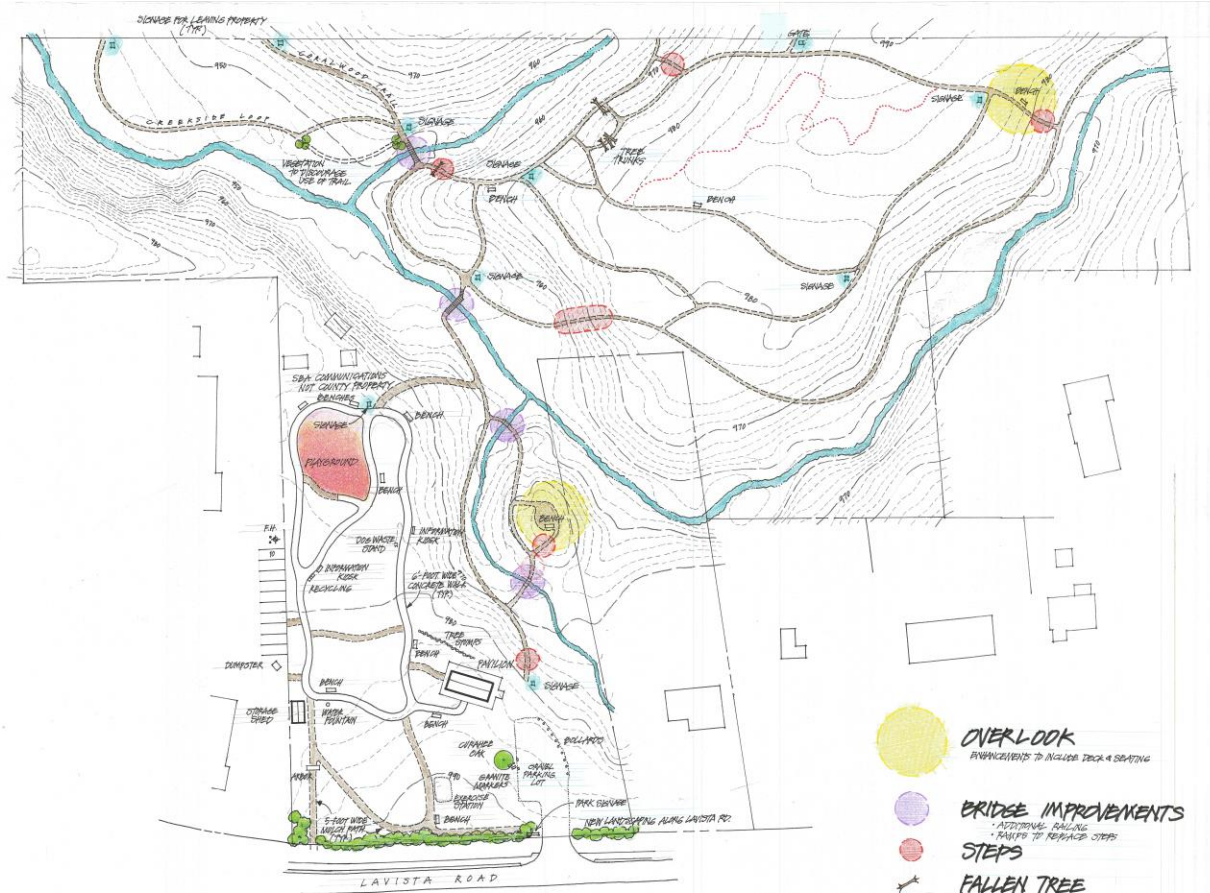
## Proposed Project: Additional water fountain

## Proposed Project: Trail additions/improvements

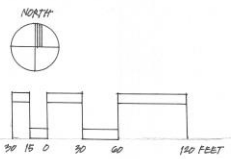




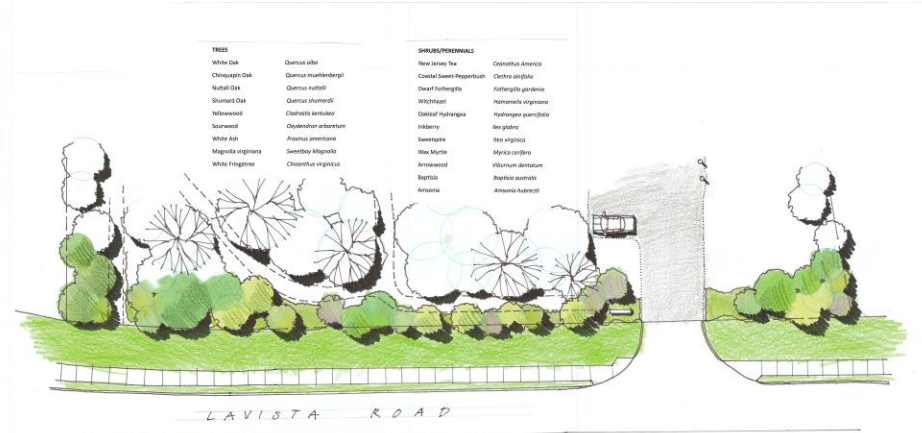
# Final Master Plan



-  **OVERLOOK**  
IMPROVEMENTS TO INCLUDE DECK & SEATING
-  **BRIDGE IMPROVEMENTS**  
• ADDITIONAL RAILING  
• RAMP UP TO REPLACE STEPS
-  **STEPS**
-  **FALLEN TREE SIGNAGE**
-  **SIGNAGE**



MASTER PLAN FOR  
Frazier-Rowe Park



TREES	SHRUBS/PERENNIALS	
White Oak	Quercus alba	Coreopsis America
Chinquapin Oak	Quercus muhlenbergii	Croton chaetochloa
Rustling Oak	Quercus australis	Chenopodium graveolens
Shumard Oak	Quercus shumardii	Hemerocallis virginica
Willow Oak	Quercus serotina	Hydrangea quercifolia
Sourwood	Ostrya virginiana	Asplenium platyneuron
White Ash	Fraxinus americana	Impatiens
Magnolia virginiana	Sweetbay Magnolia	Wax Myrtle
White Fringetree	Chionodoxa virginica	Artemisia
		Yucca filamentosa
		Yucca debilex
		Asplenium platyneuron
		Asplenium platyneuron





# Questions and/ or Comments?





# Thank you



[wsp.com](http://wsp.com)