



Georgia Department of Transportation



• ECONOMIC IMPACT REPORT FOR •
DEKALB-PEACHTREE AIRPORT



September 2020

According to Site Selection Magazine, Georgia is **ranked as the #1 state** for doing business.

Georgia Airports Mean Business.

Airports in Georgia generate positive economic impacts as well as support many other sectors of local and state economies. In the summer of 2019, the Georgia Department of Transportation undertook a statewide study to estimate the annual economic impact of 102 study airports. The study estimated economic impacts for seven commercial airports and 95 general aviation airports. This report includes impacts related to **DeKalb-Peachtree Airport** and summarizes all Statewide Airport Economic Impacts.

Annual Economic Impacts for DeKalb-Peachtree Airport

Residents, businesses, and visitors benefit from the state's well-developed airport system. While supporting transportation, healthcare, tourism, and commerce, airports contribute to the economy. The Economic Impact Study identified specific economic impacts associated with the **DeKalb-Peachtree Airport** and other airport benefits. Key impacts for the **DeKalb-Peachtree Airport** follow.

Annual Visitors
258,968

Employment Supported
2,602

Annual Payroll
\$111,200,300

Annual Spending
\$260,947,100

Annual Economic Impact
\$372,147,400

Airport-Supported Annual State & Local Sales & Income Tax Revenues
\$16,900,710

Economic Impacts for DeKalb-Peachtree Airport

The table below provides information on the sources of annual economic impact estimated for the **DeKalb-Peachtree Airport**. For more information on the impacts reported here, consult the study's Technical Report available at dot.ga.gov/IS/AirportAid.

Annual Economic Impacts for DeKalb-Peachtree Airport

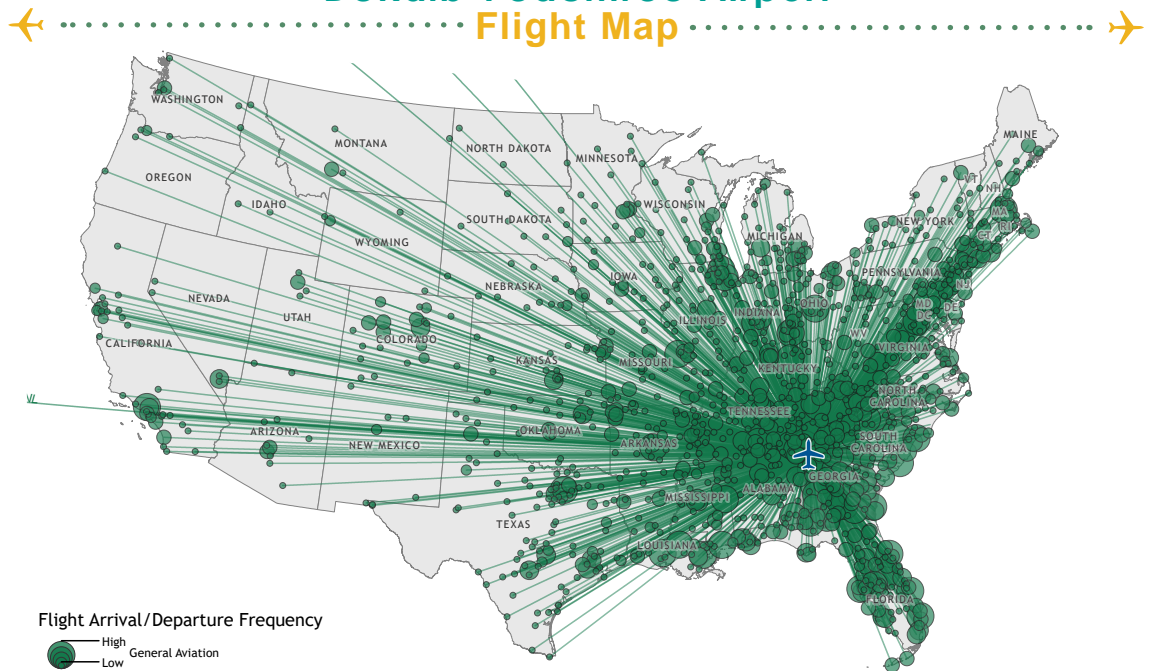
	Employment	Payroll	Spending	Total Economic Activity
Airport Management & Business Tenants	1,455	\$79,501,900	\$198,894,300	\$278,396,200
Capital Investment	164	\$5,077,800	\$20,788,000	\$25,865,800
General Aviation Visitor Expenditures	983	\$26,620,600	\$41,264,800	\$67,885,400
Total	2,602	\$111,200,300	\$260,947,100	\$372,147,400

Georgia Airports Support Connectivity

A flight from a Georgia airport is a gateway to over 40,000 worldwide airports, including over 19,000 airports in the US alone. When employers seek to relocate or expand, proximity to an airport is among the top 10 factors they consider in their decision making. Georgia's tourist industry also depends on the efficiency of air travel.

This map depicts destinations for flights departing from and arriving at **DeKalb-Peachtree Airport** on any given day. This information is generated from the FAA's National Offload Program (NOP). Flights represent only a fraction of all destinations that can be reached directly from the airport. The map helps to show how the airport supports the travel needs of businesses, visitors, and residents of the airport's service area.

DeKalb-Peachtree Airport Flight Map



Top Five Destinations for DeKalb-Peachtree Airport

1 Savannah, Georgia

2 Brunswick, Georgia

3 Birmingham, Alabama

4 Teterboro, New Jersey

5 Augusta, Georgia

Statewide Economic Impacts

Shown below are total annual statewide economic impacts. All economic impacts shown in this report for Hartsfield-Jackson Atlanta International Airport were obtained from a separate study for that airport conducted by the City of Atlanta. As shown, when all Georgia airports are considered, total annual statewide economic impacts are estimated at 450,502 jobs, \$9.2 billion in annual payroll, and \$73.7 billion in annual economic activity.

Statewide Economic Impacts All System Airports

	Hartsfield-Jackson Atlanta International Airport*	Commercial Study Airports	General Aviation Study Airports	State Total
Employment	383,242	52,376	14,893	450,502
Payroll	\$16.7 billion	\$1.3 billion	\$271 million	\$9.2 billion
Economic Activity	\$66.8 billion	\$2.2 billion	\$828 million	\$73.7 billion

*2016-2017 Technical Report, City of Atlanta Economic Impact Study

Economic Impact Categories and Measurements

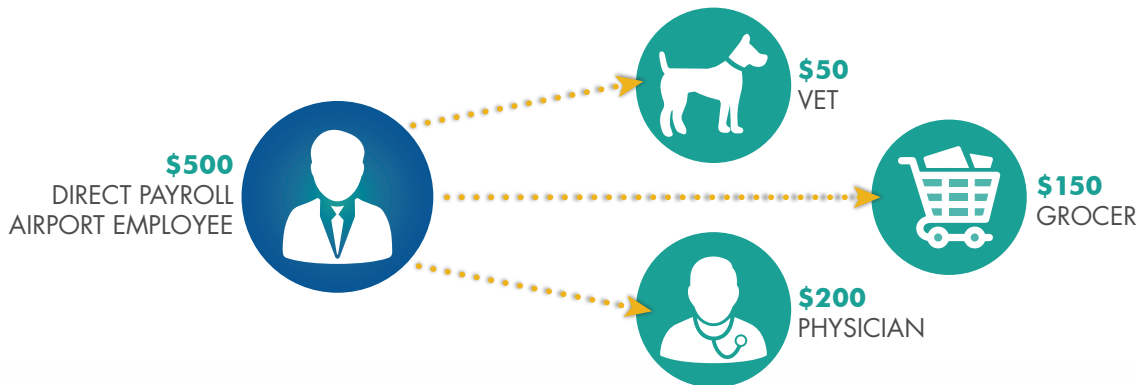
The study identified impacts related to airport management (day-to-day airport operations), aviation-related business tenants, average annual capital investment, expenditures from visitors arriving on general aviation aircraft, and expenditures by visitors arriving on scheduled commercial airline flights. For each of these five categories, impacts were measured for **employment, payroll, spending, and annual economic activity**. Annual economic activity is the sum of payroll and spending. In addition, the study estimated state and local tax revenues that are generated by airport-supported activities.



- Airport Management
- Aviation-Related Business Tenants
- Average Annual Capital Investment
- Visitors Arriving on General Aviation Aircrafts
- Visitors Arriving on Commercial Flights

Study Methodology

Data collection and survey efforts identified **direct** economic impacts in each of the five impact categories using an approved FAA methodology. A state input/output model (**IMPLAN**) was used to estimate additional **indirect and induced** impacts, sometimes referred to as multiplier impacts. Combined, direct plus indirect/induced impacts equal total state or airport specific economic impacts.

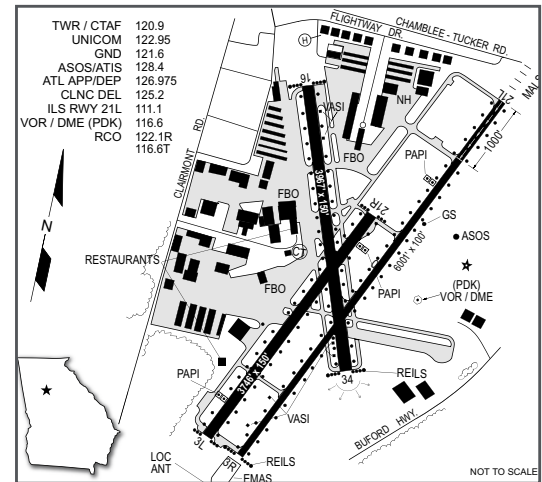


The direct impacts that start at the airport multiply within the state economy. The \$150 of direct impact spent with the grocery results in additional payroll (induced impacts) for the grocer's employees. As the grocery buys supplies, this additional business to business spending results in indirect impacts.

DeKalb-Peachtree Airport

DeKalb-Peachtree Airport is located in Chamblee, eight miles northeast of downtown Atlanta in DeKalb County. The airport is in close proximity to US Highway 23 and Interstates 85 and 285. DeKalb County, with a population exceeding 700,000, has a diverse economic base, with employers in healthcare, education, manufacturing, retail, construction, trade finance, engineering, and management. DeKalb-Peachtree Airport is located one mile south of Chamblee. The airport has an air traffic control tower and four runways. The longest runway, Runway 3R/21L, measures 6,001 feet in length; this runway is equipped with a precision approach.

The airport is home to more than 60 on-airport businesses providing extensive aviation-related services. Services at the airport include fueling, major aircraft maintenance, aircraft storage, aircraft cleaning, catering, and ground transportation. A wide variety of amenities are available for passengers and pilots. One of the largest business tenants at the airport is the 57th Fighter Group Restaurant. Atlantic Aviation is a large fixed based operator (FBO) providing a wide variety of services and housing several corporate flight departments. Signature Flight Support is another large tenant providing aircraft services. With over 150 employees, Epps Aviation is the largest tenant at the airport; Epps Aviation provides a wide range of services to all types of general aviation planes.



Examples of How DeKalb-Peachtree Airport Supports its Community

There is a good chance you benefit from different activities that the airport supports. Airports support healthcare and emergency services. Airports support the state's agricultural and forestry industries, and power companies rely on airports to keep electricity flowing. State and federal agencies use airports to protect the environment, and law enforcement benefits from airports. Businesses throughout Georgia rely on airports to improve their efficiency. Examples of how the airport benefits the community follow.



Business Use: Airports are tools used by a wide variety of corporations, businesses and individuals to increase many aspects of their business to streamline and increase efficiency. When businesses consider where they locate or expand, in proximity to an airport is often a top consideration. Airports are also a contributor to an area's economic diversification and growth. Both local and visiting businesses rely on air travel to increase their efficiency. Airports help companies expand their market areas, reduce employee travel time, provide access for customers and suppliers, and tie together offices in multiple locations. Businesses that have corporate flight departments at the airport include Southern Company and Waffle House, Children's Hospital of Atlanta, RockTenn and a wealth of others. The airport serves as an access point for businesses traveling to and from metro Atlanta. Daily on-demand carriers such as Ultimate Air Shuttle, NetJets, XOJets, JetLinks, Priority Jet, and Wheels Up transport employees and individuals from Atlanta businesses and companies to various locations throughout the United States and bring customers and suppliers from national companies to metro Atlanta. The airport improves the efficiency of the businesses and many more, that operate in the airport's service area.

Emergency Support: AirCARE1 uses the airport to fly Georgia residents in need of advanced medical care to other parts of Georgia, other areas in the United States, and in some instances, to other parts of the world. Founded by a critical care nurse, AirCARE1 enables area residents to seek out the finest medical care available. While in the air, AirCare1 provides patients with the same level of medical care that the patient receives at the best ground-based medical facilities. AirCARE1 is one of the many air ambulance and medevac providers who have earned dual accreditation, both in U.S. and European medical transport. The flight crew who transports area residents includes two highly experienced and knowledgeable air ambulance pilots; the medical staff on each flight includes a critical care nurse and either a respiratory therapist or a paramedic. AirCARE1's fleet is comprised of Lear 35A jets, and their fleet is outfitted with the most advanced medical technology available to support neonate, pediatric, geriatric, and bariatric patients. Medical support services that the airport facilitates often are unobserved but are crucial for urgent medical conditions.

Medical Testing: Quest Diagnostics is an American clinical laboratory. As a Fortune 500 company, Quest operates in the United States, United Kingdom, Mexico, and Brazil. Quest maintains collaborative agreements with various hospitals and clinics across the globe, including many in the Atlanta area. The company has approximately 45,000 employees. Quest provides diagnostic testing services for cancer, cardiovascular disease, infectious disease, neurological disorders, and employment and court-ordered drug testing. In May 2018, the company became an in-network laboratory provider to United Healthcare, providing access to 48 million plan members. Quest uses the airport when it is transporting test results and biosamples for analysis. Quest has been prominent in its role to research and test for the COVID-19 (Novel Coronavirus) virus.

Healthcare Support: Children's Hospital of Atlanta is a leading provider of pediatric health care services. While most of their facilities are located in the Atlanta metro area, the Hospital has affiliations with other pediatric health care providers around the state. Some of these facilities are located more than a 3 ½ hour drive from Atlanta. When time is of the essence, children are flown from outlying areas to the Hospital's primary facilities in Atlanta. By supporting timely access to emergency and other scheduled services, such as surgery, the airport plays a key role related to healthcare. The ability to rapidly and safely move patients, medical personnel, and equipment, when urgent conditions mandate, is beneficial to the well-being and quality of life of local residents.

THIS DOCUMENT WAS PREPARED BY

Jviation
900 S Broadway, Suite 350
Denver, Colorado 80209
303.524.3030
www.jviation.com

Data collection and analysis for this study took place before the onset of the COVID-19 pandemic in March 2020. Results reflect conditions at Georgia airports prior to that time.

FOR MORE INFORMATION PLEASE CONTACT

Georgia Department of Transportation Aviation Programs
600 West Peachtree Street NW
Atlanta, Georgia 30308
404.631.1990 | dot.ga.gov/IS/AirportAid
Email: aviationprograms@dot.ga.gov