

Pre-Fabricated Building:



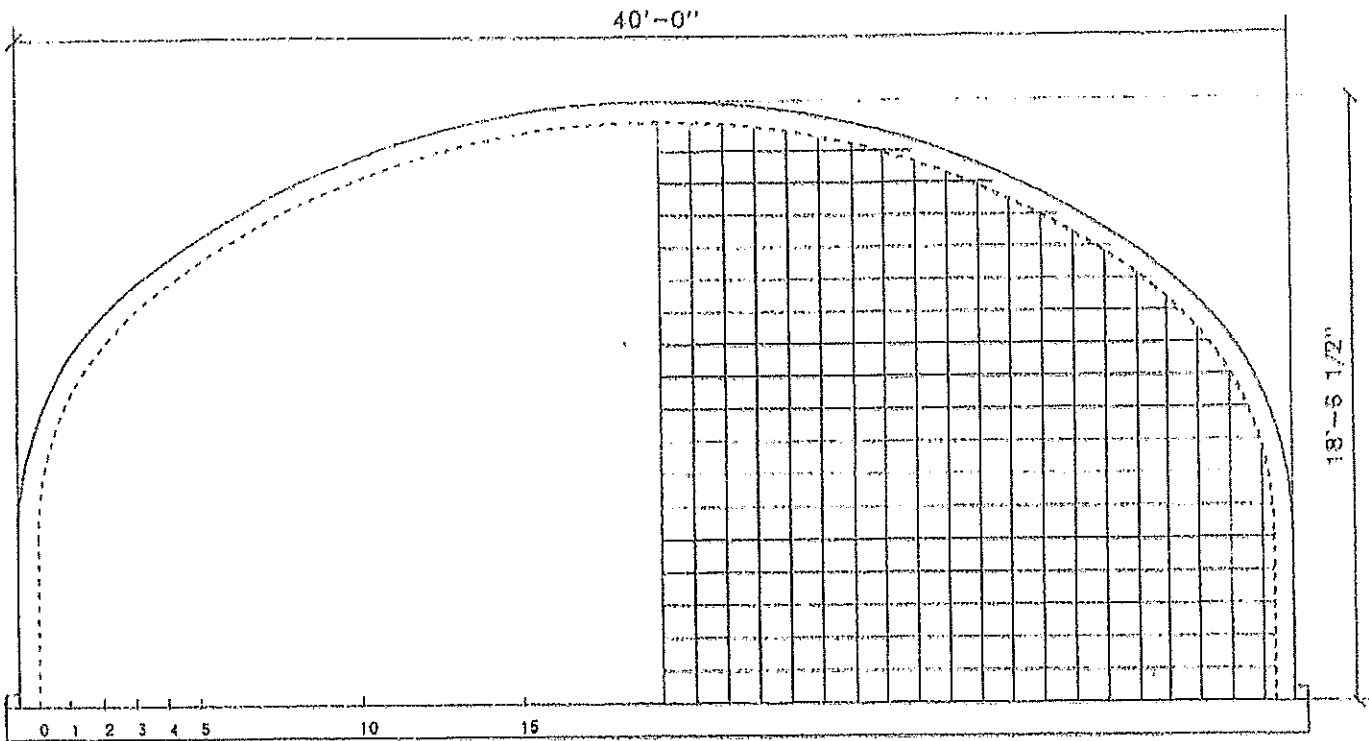


SPECIFICATIONS

S-MODEL 40' x 60' x 18' -20g AZ55 GALVALUME STEEL

- 1) CLEAR SPAN PRE-ENGINEERED ARCH STEEL BUILDING, FRAMLESS, CONSISTING OF CORRUGATED PANELS THAT ARE BOLTED TOGETHER TO FORM A COMPLETE BUILDING.
- 2) 40' WIDE x 60' LENGTH x 18' TALL, 20g AZ55 GALVALUME STEEL BUILDING.
30 ARCHES (2' WIDE SECTIONS), ALL NUTS, BOLTS, WASHERS, AND HARDWARE INCLUDED FOR BUILDING. BANDING INCLUDED.
- 3) 1) SOLID STEEL END WALL FOR REAR 1) OUTER CURVED ANGLE FRAMING KIT FOR FRONT.
- 4) AZ55 PROTECTION GALVALUME STEEL (MIN. 20 GAUGE THROUGHOUT). 35 YEAR WARRANTY.
- 5) 9 '12 "OVERLAP FROM ONE ARCH TO THE NEXT. 3 W' OVERLAP FROM ONE ARCH SECTION TO THE NEXT.
- 6) US BUILDINGS WILL PROVIDE ALL FOUNDATION, CONSTRUCTION MANUALS, AND DRAWINGS FOR SNOW, WIND, AND LIVE LOADS. PERFORMANCE REFERENCE- US BUILDINGS MODEL S40-18.

S 40 x 18



Horizontal Distance	Inside Clearance
1'	9' - 4 15/16"
2'	10' - 11 13/16"
3'	12' - 0 7/8"
4'	12' - 10 9/16"
5'	13' - 6 15/16"
10'	16' - 2"
15'	17' - 6 9/16"
20'	
25'	
30'	
35'	
40'	
45'	
50'	

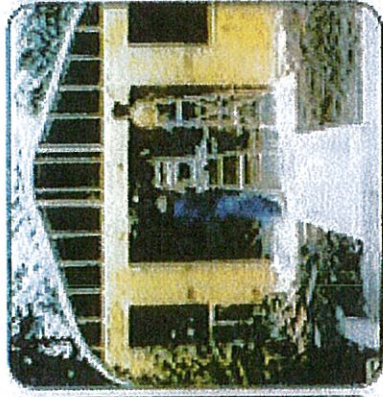
GAUGE	LIVE	SNOW	WIND	ARCH WEIGHT
20/22	22	27	120	300
20	26	32	131	370
18/20	36	44	150	465
18	45	56	169	570
16/18	48	71	188	N/A

Customer Framed Endwalls



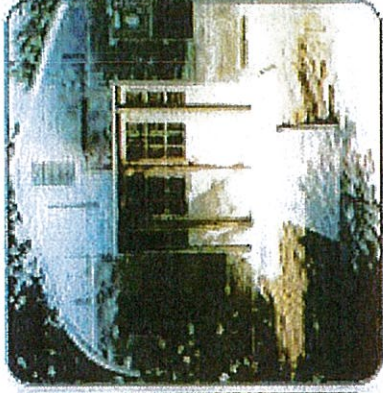
Step 1

Attach (Outer Curved Angles)



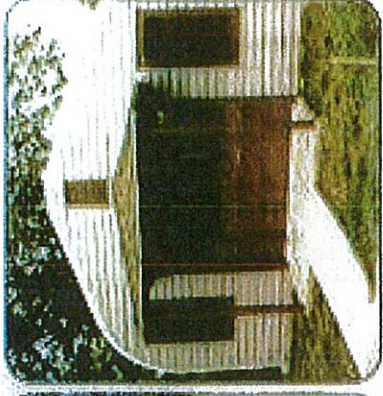
Step 2

Frame end wall with 2"X4"
And sheet with ply-wood



Step 3

Add doors and windows
to your preference



Step 4

Cover with your choice of
siding for a great looking finish