



December 1, 2016

PROPOSED NEW HOME

929 Springdale Road, NE
Atlanta, GA 30306

The follow are images of existing elements on the 929 Springdale Road property that are proposed to be removed:



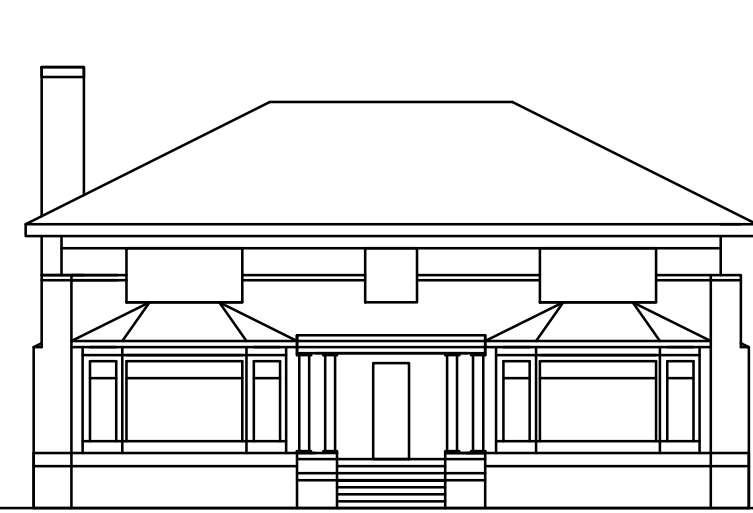
The existing non-functioning pool structure



The existing brick and metal fence.



The existing brick and metal fence.



935 SPRINGDALE

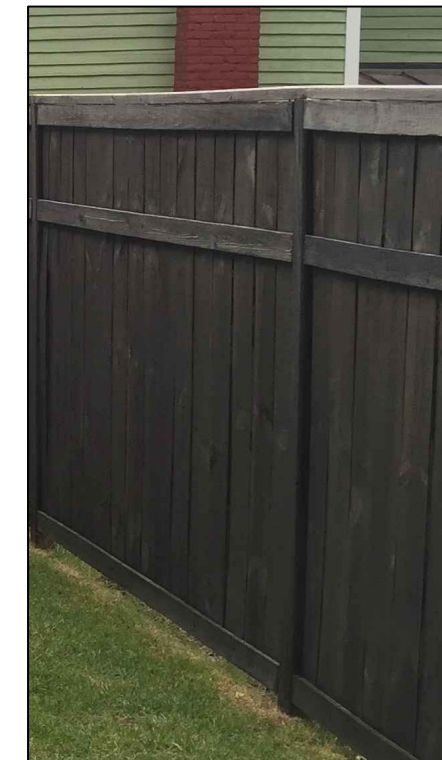


929 SPRINGDALE



923 SPRINGDALE

02 STREETScape
A0.1 NO SCALE



PROPOSED 6' HIGH WOOD FENCE & GATE DESIGN, FINISHED BOTH SIDES

LANDSCAPE CALCULATIONS FOR 929 SPRINGDALE ROAD

TREE INVENTORY

REMOVED			SAVED		
SIZE	TYPE	CONDITION	SIZE	TYPE	UNITS
31"	OAK	DDH	22"	OAK	6
11"	PINE	HEALTHY	21"	OAK	5.4
10"	SWEETGUM	HEALTHY	11"	MAPLE	3.2
46"	OAK	DDH	11"	OAK	3.2
37"	OAK	DDH	14"	HICKORY	4
12"	OAK	HEALTHY	21"	MAPLE	5.4
17"	MAGNOLIA	HEALTHY	38"	OAK	15.8
15"	MAPLE	HEALTHY	16"	MAPLE	4.8
21"	OAK	DDH	13"	SWEETGUM	4
28"	OAK	HEALTHY	28"	OAK	8.6
15"	OAK	DDH	16"	OAK	4.8
20"	OAK	HEALTHY	16"	SWEETGUM	4.8
30"	OAK	DDH	20"	HARDWOOD	5.4
38"	OAK	HEALTHY	26"	HARDWOOD	7.4
30"	POPLAR	HEALTHY	10"	CHERRY	3.2
25"	OAK	HEALTHY	37"	MAPLE	15
			17"	MIMOSA	4.8
			26"	PINE	7.4
			11/12"	MIMOSA	5.4
			16"	HICKORY	4.8
			40"	OAK	17.4

TOTAL - 16 TREES

TOTAL - 21 TREES
TOTAL DBH - 442"
TOTAL UNITS - 140.8

TREE REQUIREMENTS:

LOT AREA = 1.094 ACRES

25% OF 37 TREES = 10 TREES REQUIRED

120" DBH x 1.094 = 132" DBH REQUIRED

15 UNITS x 1.094 = 16.4 UNITS REQUIRED

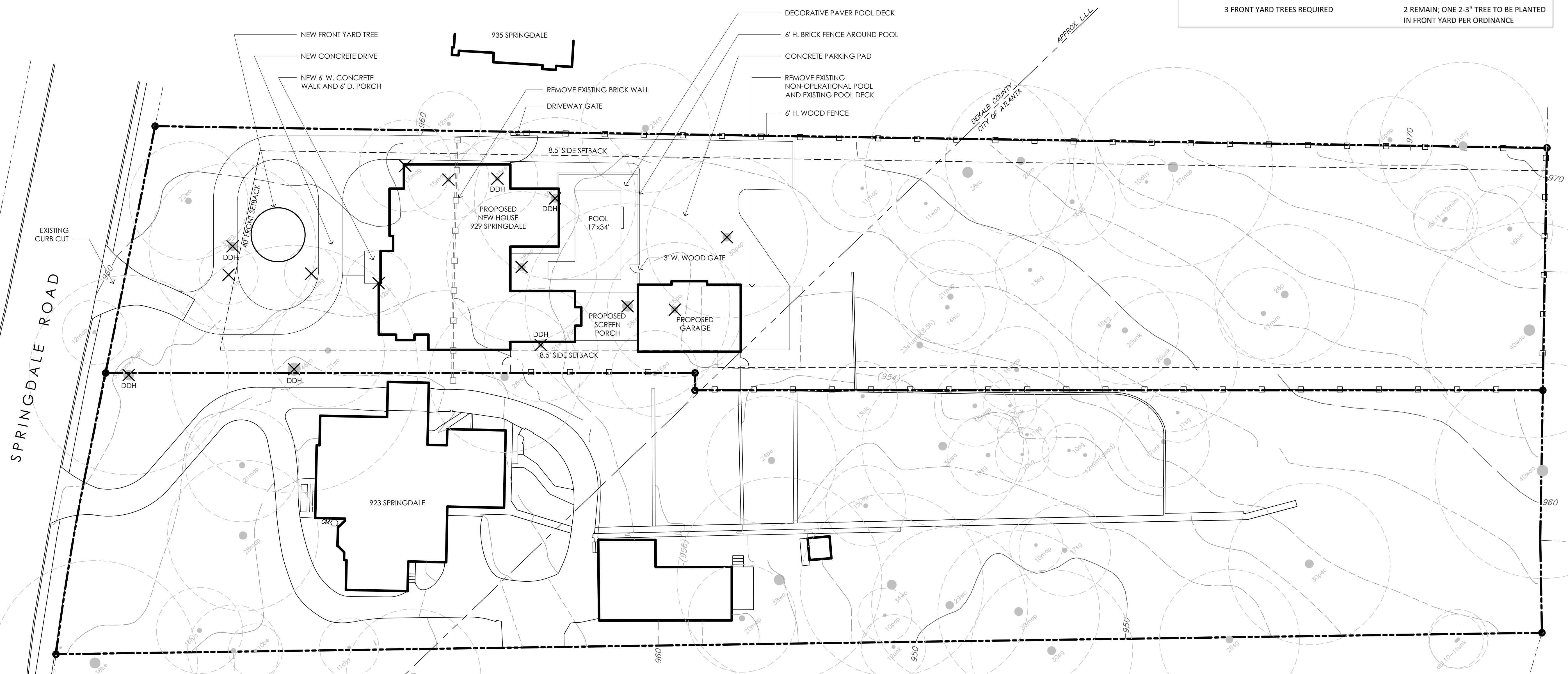
3 FRONT YARD TREES REQUIRED

21 TREES SAVED; REQUIREMENT MET

442" DBH SAVED; REQUIREMENT MET

140.8 UNITS SAVED; REQUIREMENT MET

2 REMAIN; ONE 2-3" TREE TO BE PLANTED IN FRONT YARD PER ORDINANCE



01 PROPOSED SITE PLAN
A0.1 1" = 20'



REV #	DATE	DESCRIPTION

PROPOSED NEW HOUSE
929 SPRINGDALE ROAD
ATLANTA, GEORGIA 30306

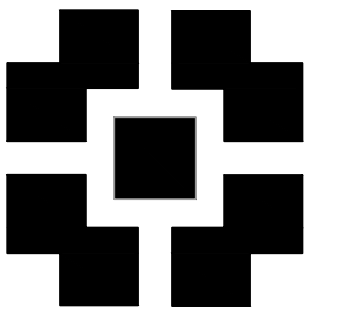
This document and all information contained within it is copyrighted by Place Maker Design and may not be copied or used without permission.

PLACE MAKER DESIGN
1000 CIRCLE 75 PARKWAY
SUITE 400
ATLANTA, GEORGIA 30339
404.549.4499

ISSUE DATE: 12/01/16
DRAWN BY: CIP
CHECKED BY: KJM
PMD PROJ #: 1609

PROPOSED SITE PLAN & STREETScape

SHEET # A0.1



**PLACE
MAKER
DESIGN**

REV #	DATE	DESCRIPTION

PROPOSED NEW HOUSE
929 SPRINGDALE ROAD
ATLANTA, GEORGIA 30306

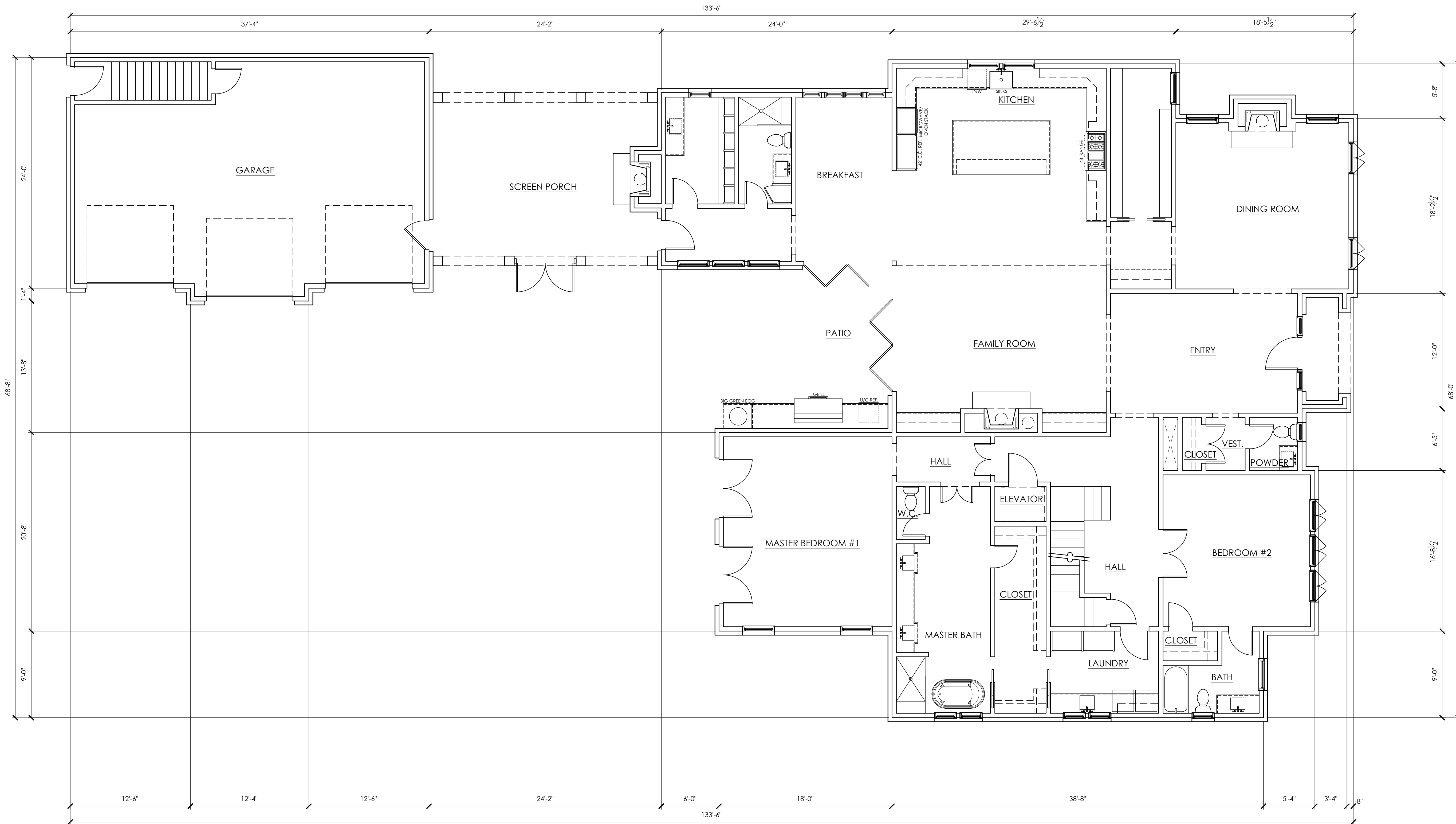
This document and all information contained within it is copyrighted by Place Maker Design and may not be copied or used without permission.

PLACE MAKER DESIGN
1000 CIRCLE 75 PARKWAY
SUITE 400
ATLANTA, GEORGIA 30339
404.549.4499

ISSUE DATE	12/01/16
DRAWN BY	CJP
CHECKED BY	KJM
PWD PROJ #	16689

SHEET TITLE
**MAIN LEVEL
PLAN**

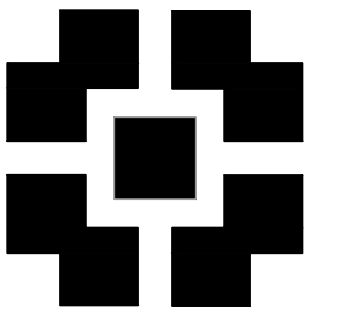
A1.02



1 MAIN LEVEL PLAN
A1.02 3/16" = 1'-0"

FLOOR AREA CALCULATION

MAIN LEVEL (HEATED)	3,746 SF
UPPER LEVEL (HEATED)	2,124 SF
UPPER LEVEL (GARAGE)	912 SF
TOTAL GROSS SF (HEATED)	6,782 SF



**PLACE
MAKER
DESIGN**

REV #	DATE	DESCRIPTION

PROPOSED NEW HOUSE
929 SPRINGDALE ROAD
ATLANTA, GEORGIA 30306

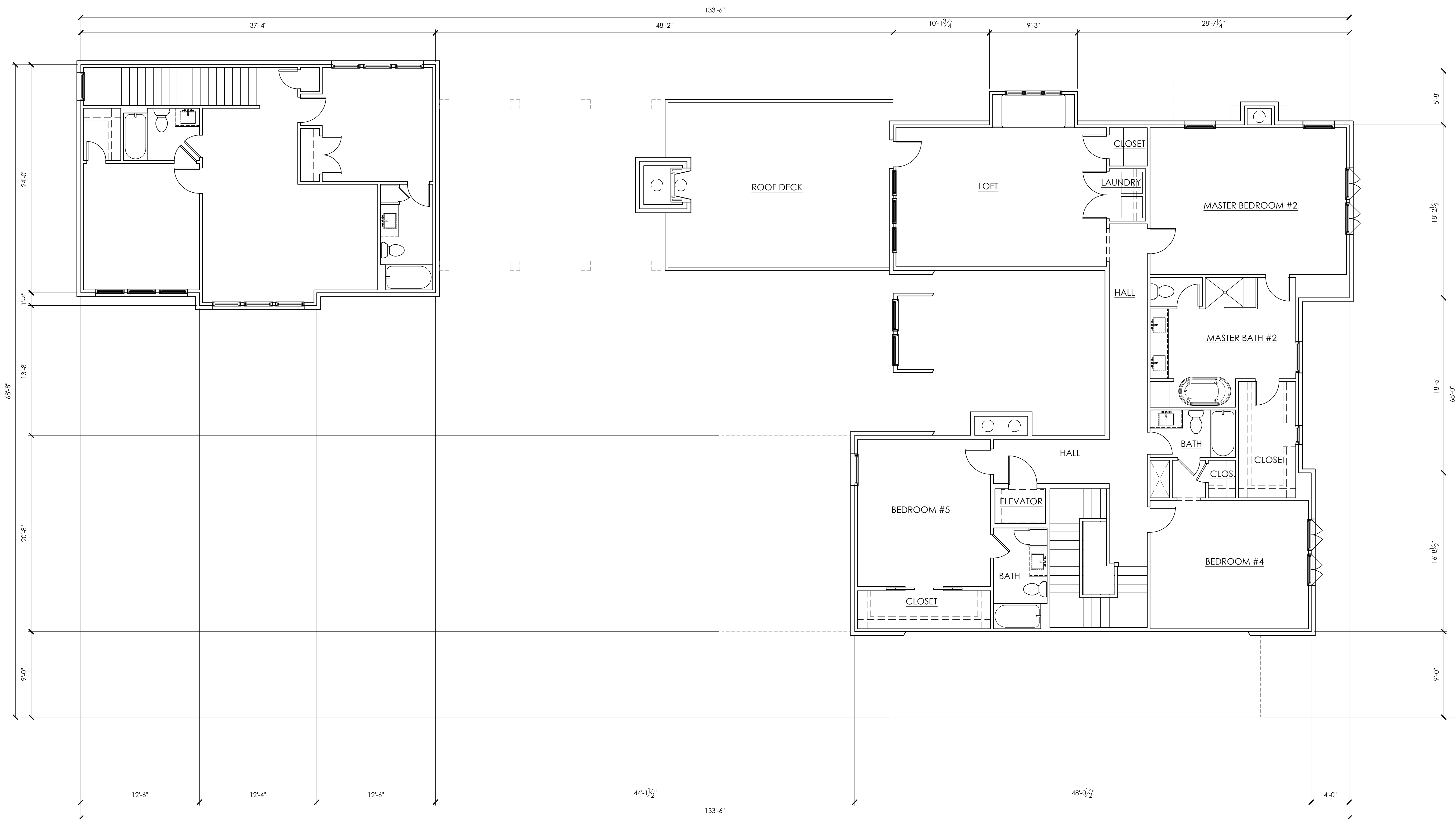
This document and all information contained within it is copyrighted by Place-Maker Design and may not be copied or used without permission.

PLACE MAKER DESIGN
1000 CIRCLE 75 PARKWAY
SUITE 400
ATLANTA, GEORGIA 30339
404.549.4499

ISSUE DATE	12/01/16
DRAWN BY	CJP
CHECKED BY	KJM
PWD PROJ #	16689

SHEET TITLE
**UPPER LEVEL
PLAN**

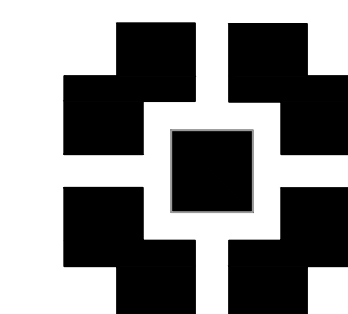
SHEET #
A1.03



UPPER LEVEL PLAN
A1.03 3/16" = 1'-0"

FLOOR AREA CALCULATION

MAIN LEVEL (HEATED)	3,746 SF
UPPER LEVEL (HEATED)	2,124 SF
UPPER LEVEL (GARAGE)	912 SF
TOTAL GROSS SF (HEATED)	6,782 SF



PLACE
MAKER
DESIGN

REV #	DATE	DESCRIPTION

PROPOSED NEW HOUSE
929 SPRINGDALE ROAD
ATLANTA, GEORGIA 30306

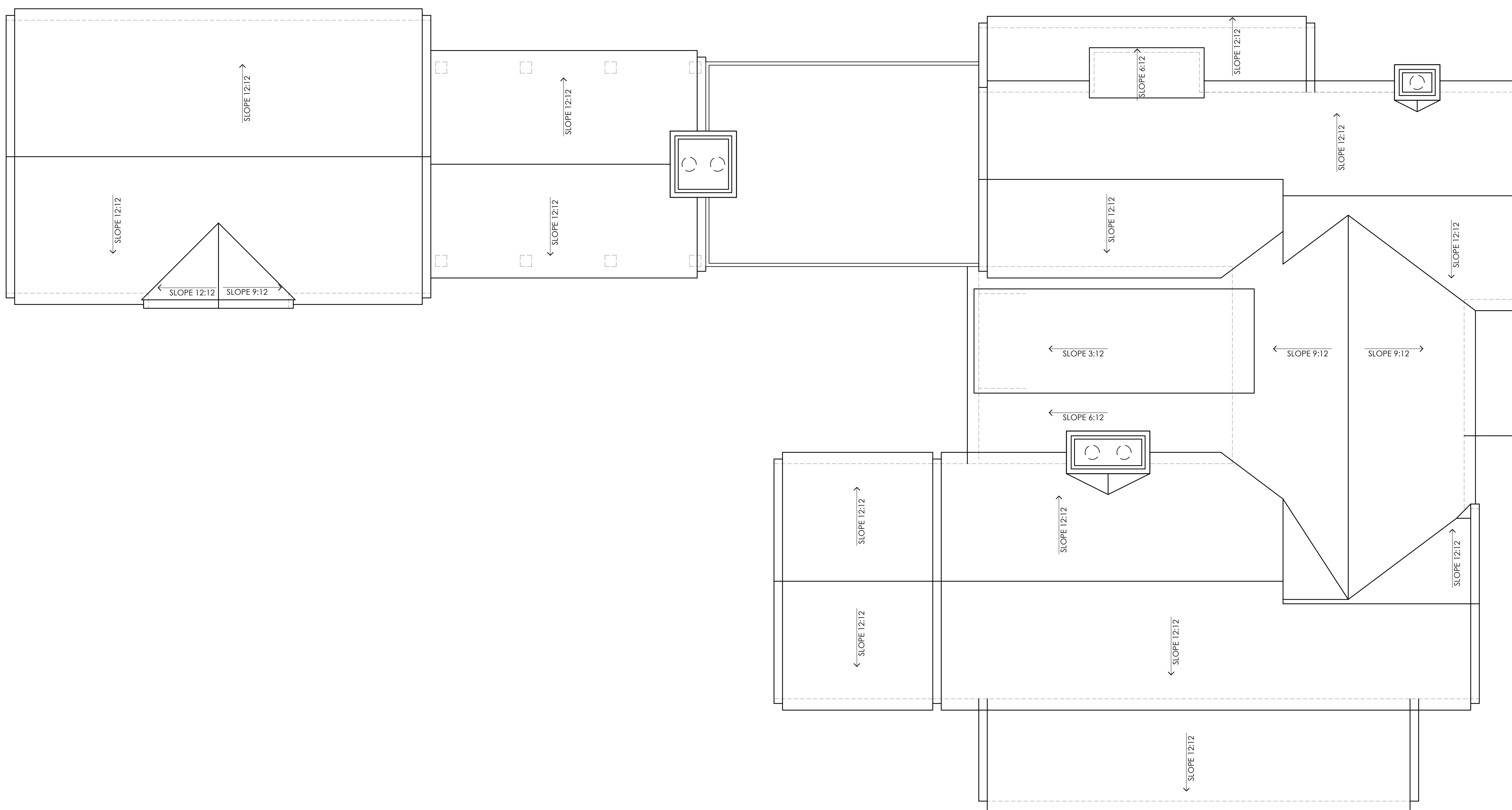
This document and all information contained within
it is copyrighted by Place Maker Design and may
not be copied or used without permission.

PLACE MAKER DESIGN
1000 CIRCLE 75 PARKWAY
SUITE 400
ATLANTA, GEORGIA 30339
404.549.4499

ISSUE DATE	12/01/16
DRAWN BY	CJP
CHECKED BY	KJM
PMD PROJ #	16689

SHEET TITLE
ROOF PLAN

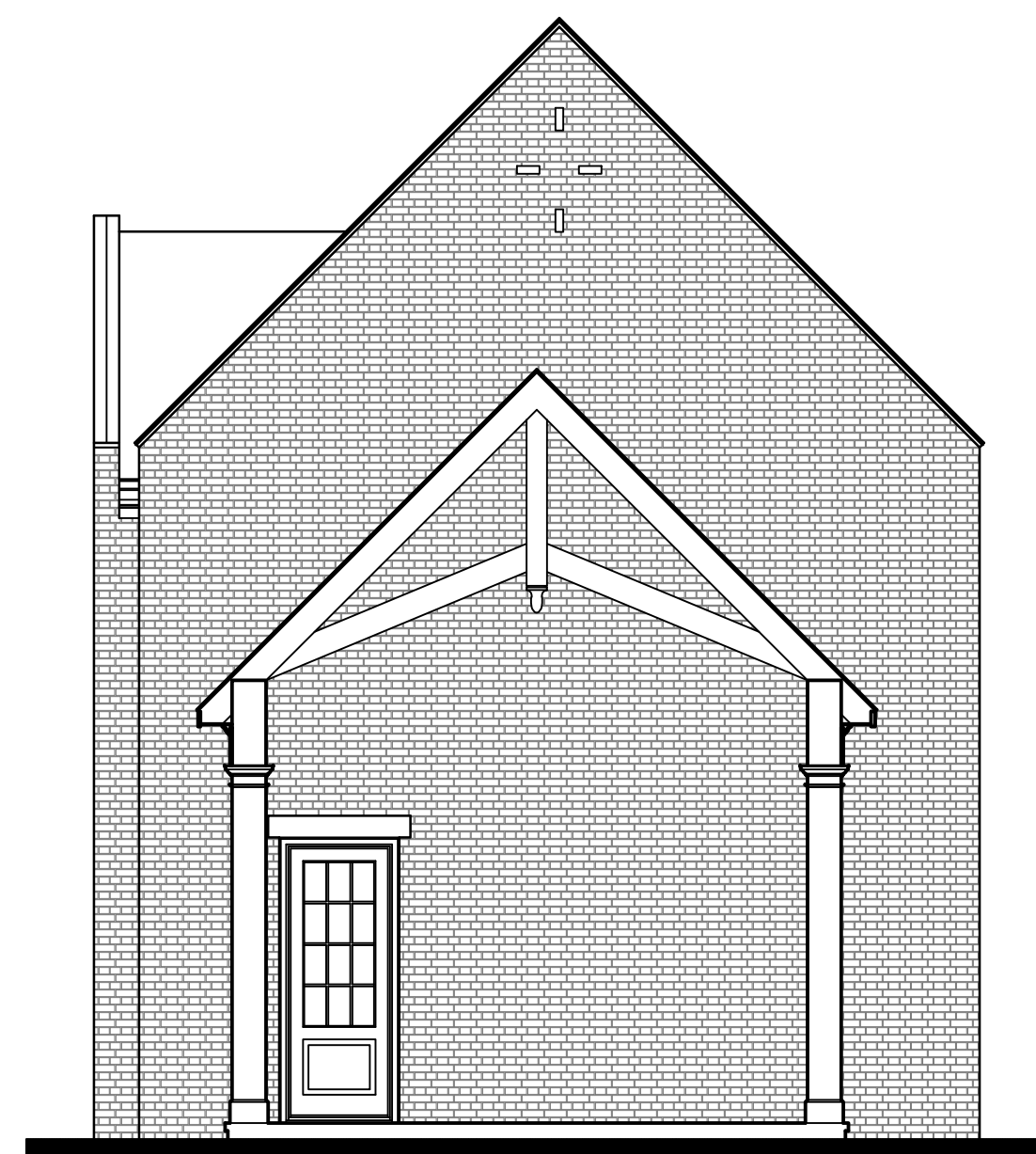
SHEET #
A1.04



1 ROOF PLAN
A1.04 3/16" = 1'-0"



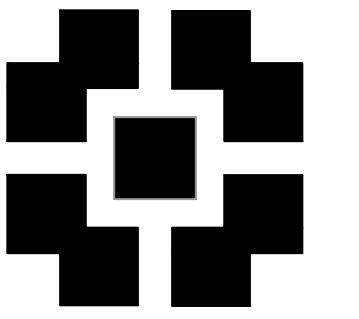
3 RIGHT SIDE ELEVATION
A2.01 3/16" = 1'-0"



2 FRONT ELEVATION - GARAGE
A2.01 3/16" = 1'-0"



1 FRONT ELEVATION
A2.01 3/16" = 1'-0"



PLACE
MAKER
DESIGN

REV #	DATE	DESCRIPTION

PROPOSED NEW HOUSE
929 SPRINGDALE ROAD
ATLANTA, GEORGIA 30306

This document and all information contained within
it is copyrighted by Place-Maker Design and may
not be copied or used without permission.

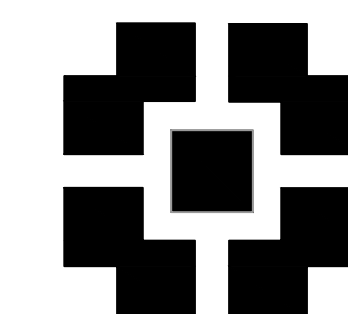
PLACE MAKER DESIGN
1000 CIRCLE 75 PARKWAY
SUITE 400
ATLANTA, GEORGIA 30339
404.549.4499

ISSUE DATE	12/01/16
DRAWN BY	CJP
CHECKED BY	KJM
PWD PROJ #	16689

SHEET TITLE

ELEVATIONS

SHEET #
A2.01



PLACE
MAKER
DESIGN

REV #	DATE	DESCRIPTION

PROPOSED NEW HOUSE
929 SPRINGDALE ROAD
ATLANTA, GEORGIA 30306

This document and all information contained within
it is copyrighted by Place Maker Design and may
not be copied or used without permission.

PLACE MAKER DESIGN
1000 CIRCLE 75 PARKWAY
SUITE 400
ATLANTA, GEORGIA 30339
404.549.4499

ISSUE DATE	12/01/18
DRAWN BY	CJP
CHECKED BY	KJM
PWD PROJ #	16689

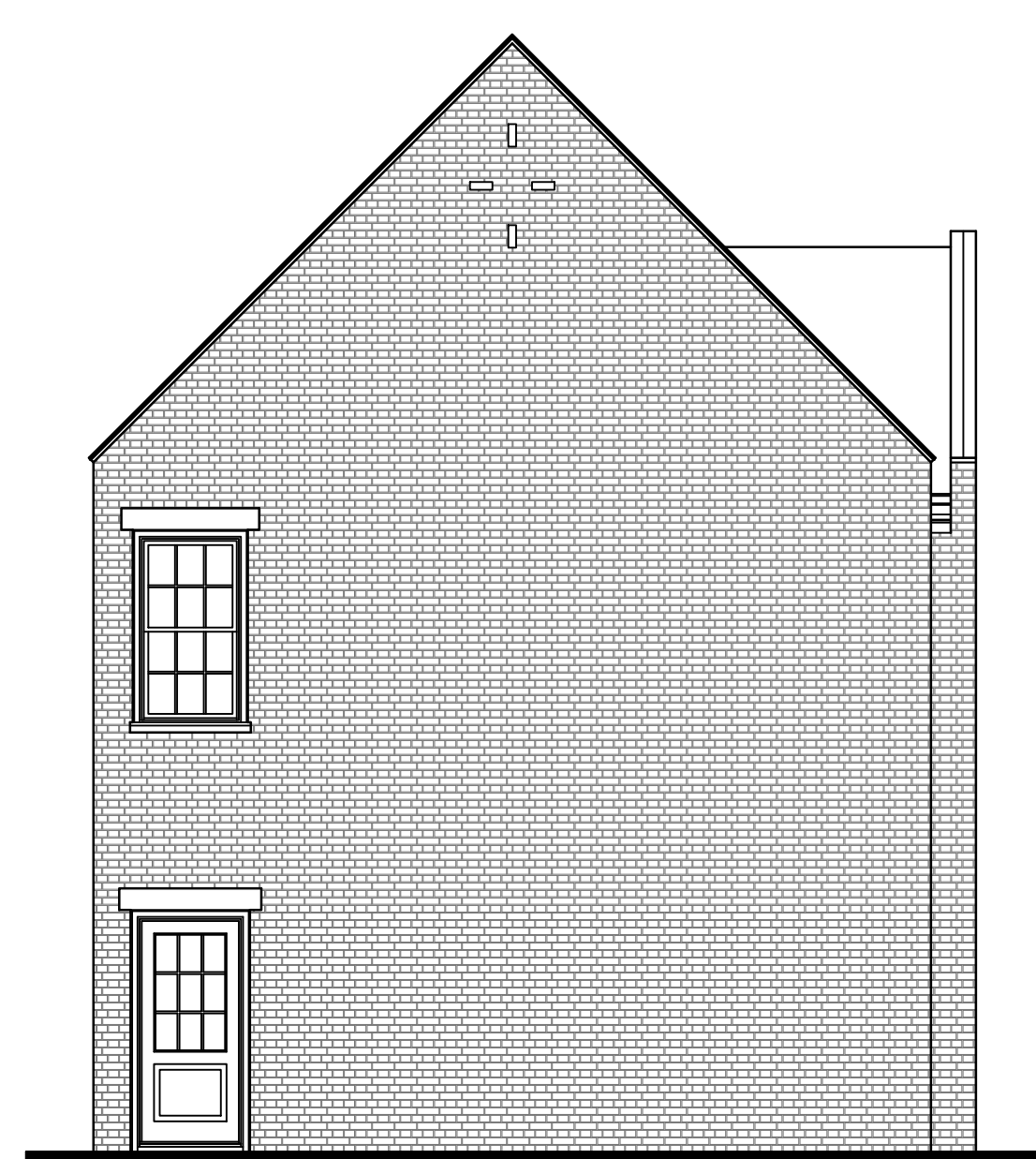
SHEET #

ELEVATIONS

A2.02



3 LEFT SIDE ELEVATION
A2.02 3/16" = 1'-0"



2 REAR ELEVATION - GARAGE
A2.02 3/16" = 1'-0"



1 REAR ELEVATION
A2.02 3/16" = 1'-0"