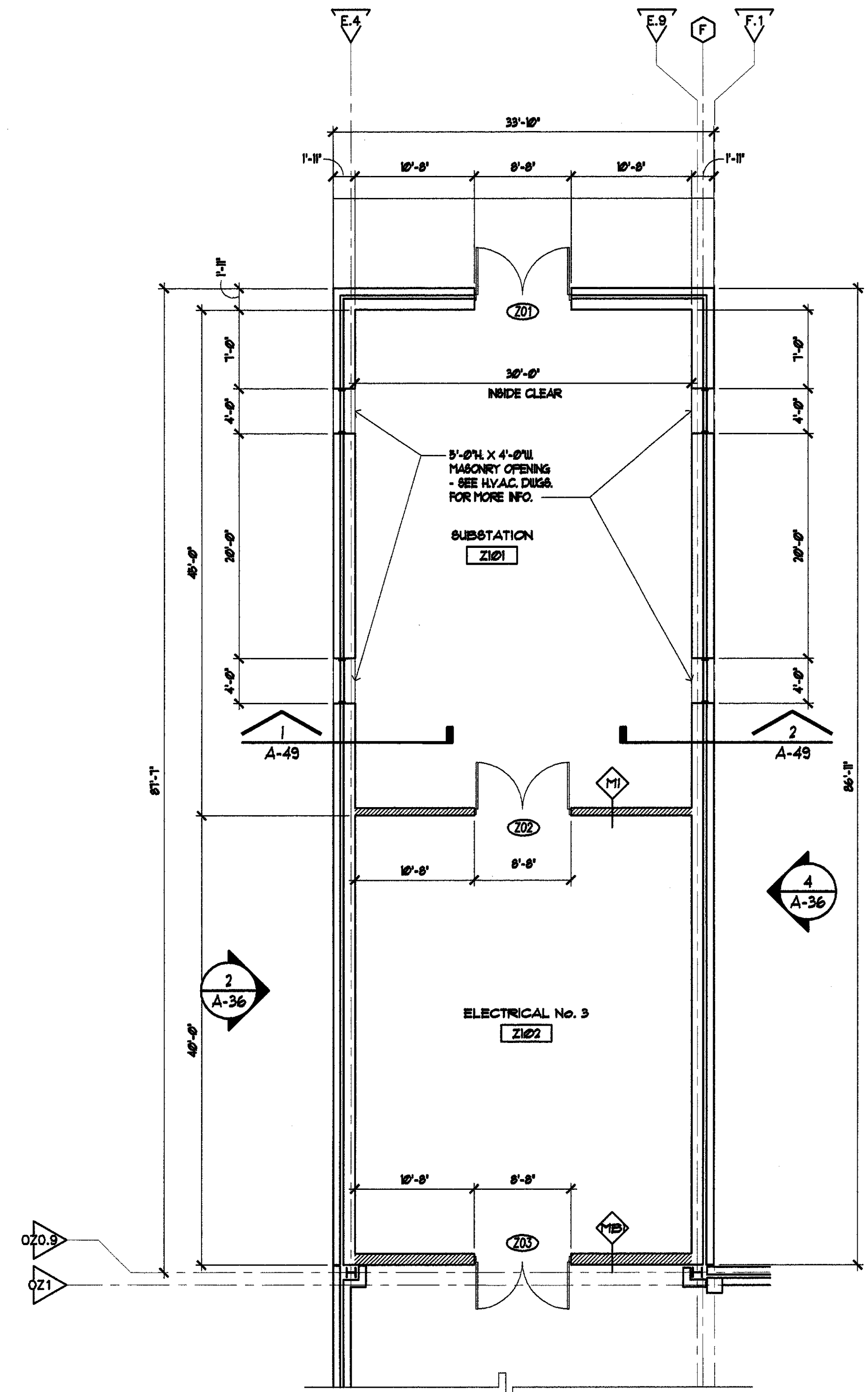


1 FLOOR PLAN - LEVEL 1034.00 - OZONE BLDG. 1/8" = 1'-0"



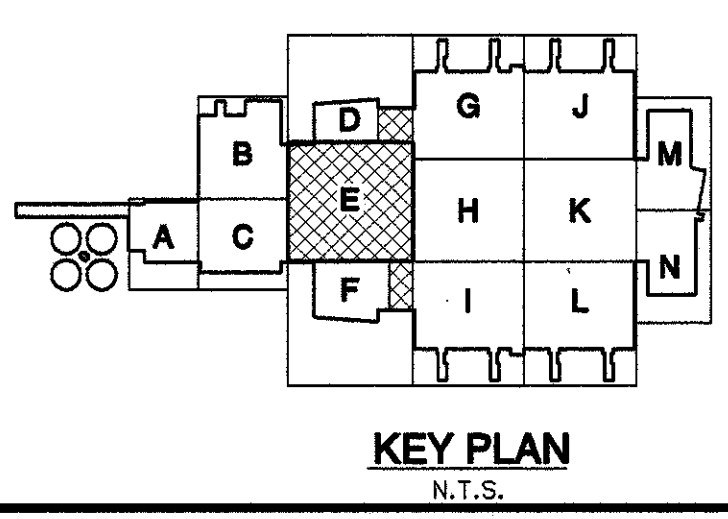
2 FLOOR PLAN - LEVEL 1034.00 - ELECTRICAL BLDG. NO. 3 1/8" = 1'-0"

LEGEND

- 1 HOUR (1) FIRE RATED CONSTRUCTION
- 2 HOUR (2) FIRE RATED CONSTRUCTION

NOTES:

- ALL INTERIOR CONSTRUCTION ABOVE EL. 1034'-0" / 1031'-0" SHALL BE CHILL SEE SHEET A-80 FOR PARTITION TYPES.
- "WHITE BOARD" SHALL BE ONE (1) 6'-0" WIDE BY 4'-0" HIGH HANGER BOARD AS SPECIFIED IN "VISUAL DISPLAY BOARDS" SECTION 1000.
- "BULLETIN BOARD" SHALL BE ONE (1) 4'-0" WIDE BY 4'-0" HIGH 1/4" MOUNTED CORK BULLETIN BOARD, AS MANUFACTURED BY CLARIDGE PRODUCTS AND EQUIPMENT, INC. OR APPROVED EQUAL. COLOR SHALL BE SELECTED FROM MANUFACTURERS STANDARD COLORS BY ENGINEER.
- SHELVING SHALL BE STAINLESS STEEL OPEN WIRE SHELVING, TWO (2) 48" WIDE BY 24" DEEP BY 14" HIGH FOUR-SHELF UNITS, WITH TWO ADDITIONAL SHELVES EACH. BASIS OF DESIGN SHALL BE NEXEL INDUSTRIES, INC. STAINLESS STEEL WIRE SHELVING.



REV. NO.	DATE	DRWN	CHK'D	REMARKS
2	5/02	RTJ	JOC	CONFORMED DRAWINGS
1	3/02	JLH	JOC	ADDENDUM NO. 7

DESIGNED BY:	TAG
DRAWN BY:	TAG
SHEET CHK'D BY:	JOC
CROSS CHK'D BY:	JOC
APPROVED BY:	
DATE:	NOVEMBER 2001

CDM Camp Dresser & McKee Inc.

THE ARCHITECTURE GROUP, INC.

PUBLIC WORKS DEPARTMENT
WATER AND SEWER DIVISION
DEKALB COUNTY, GEORGIA

EXPANSION OF SCOTT CANDLER WATER FILTER PLANT

FLOOR PLAN - 1034 LEVEL
OZONE BUILDING
AREA "E"

PROJECT NO. 25042
FILE NAME: A-13.dwg

SHEET NO. A-13