

**October 19, 2020**

**TO: ALL BIDDERS UNDER RFQ No. 20-3003740, South River Trail Boardwalk Repair**

**FROM: Department of Purchasing and Contracting, DeKalb County, Georgia**

**ADDENDUM NO. 1**

**Request for Quote (RFQ) No. 20-3003740 South River Trail Boardwalk Repair** is hereby amended as follows:

1. The Quote due date is on **October 20, 2020 at 3:00 P.M. EST.**
2. We have received questions pertaining to this Request For Quote. The questions and their resulting answers appear below:

A. **Question:** Are the boards being replaced scattered, or is continuous section being replaced?

*Answer: The boards to be replaced are together in multiple large groups.*

B. **Question:** Can you show on the map where the boards are, or have they already been marked on site?

*Answer: The boards have been marked in the field.*

C. **Question:** Do you have a detail of the existing boardwalks construction so that we might be able to review what the substructure looks like, and how many stringers we'll need to attach to?

*Answer: See attached plans.*

D. **Question:** Is there a known weight capacity on the boardwalk?

*Answer: See attached plans.*

E. **Question:** Do you anticipate extending the bid due date?

*Answer: No, currently there is no need to extend the quote due date.*

F. **Question:** What additional details are you willing to provide, if any, beyond what is stated in bid documents concerning how you will identify the winning bid?

*Answer: Each quote will be evaluated per the solicitation requirements.*

G. **Question:** Was this bid posted to the nationwide free bid notification website at [www.mygovwatch.com/free?](http://www.mygovwatch.com/free?)

*Answer: No, County solicitations are posted to Georgia Procurement Registry and the County website.*

H. **Question:** Other than your own website, where was this bid posted?

*Answer: The solicitation was posted to Georgia Procurement Registry.*

3. It is the responsibility of each bidder to ensure that he/she is aware of all addenda issued under this RFQ. Please sign and return this addendum with your response. You may email Jenifer Chapital at [JChapital@dekalbcountyga.gov](mailto:JChapital@dekalbcountyga.gov) before the Quotes are due to confirm the number of addenda issued.
4. All other conditions remain in full force and effect.

---

Jenifer Chapital, Procurement Technician

DR/jgc

### ACKNOWLEDGEMENT

Date: \_\_\_\_\_ The above Addendum #1 is hereby acknowledged:

---

(NAME OF BIDDER)

---

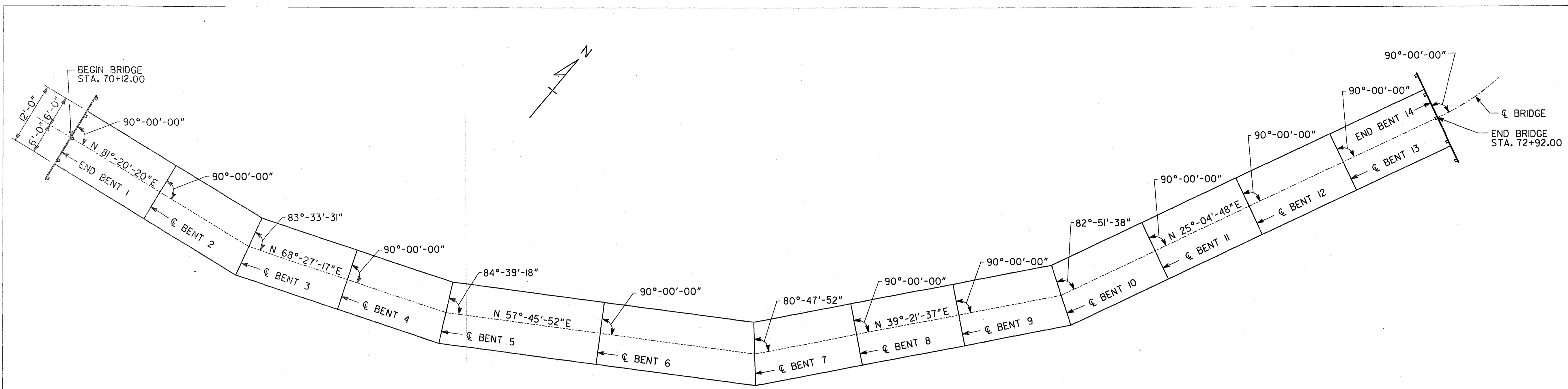
(Signature)

---

(Title)

Attachment

---



- BRIDGE CONSISTS OF**
- 2 - 30'-0" TIMBER SPANS ----- SPECIAL DESIGN
  - 11 - 20'-0" TIMBER SPANS ----- SPECIAL DESIGN
  - 2 - TIMBER END BENTS ----- SPECIAL DESIGN
  - 3 - CONCRETE INTERMEDIATE BENTS ----- SPECIAL DESIGN
  - 9 - TIMBER INTERMEDIATE BENTS ----- SPECIAL DESIGN

**PLAN**  
SCALE: 1" = 10'-0"  
HANDRAIL NOT SHOWN.

**DESIGN DATA**

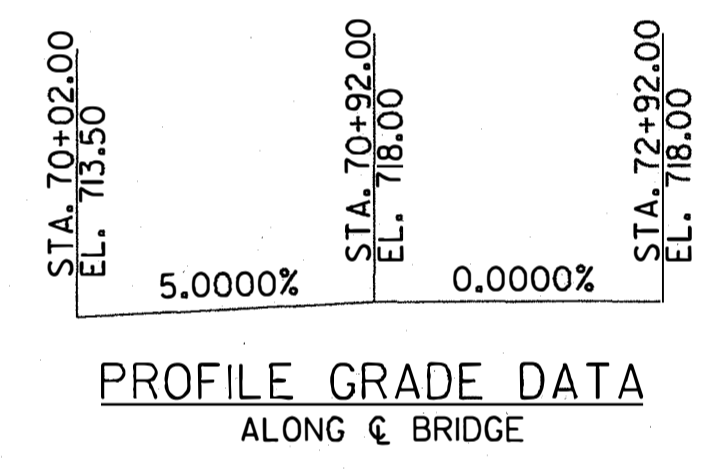
SPECIFICATIONS ----- AASHTO 17TH EDITION 2002  
(DESIGNED FOR SEISMIC PERFORMANCE CATEGORY A)

PEDESTRIAN LOADING ----- 85 PSF (NO REDUCTION)

VEHICLE LOADING ----- 5 TON MAXIMUM LOAD

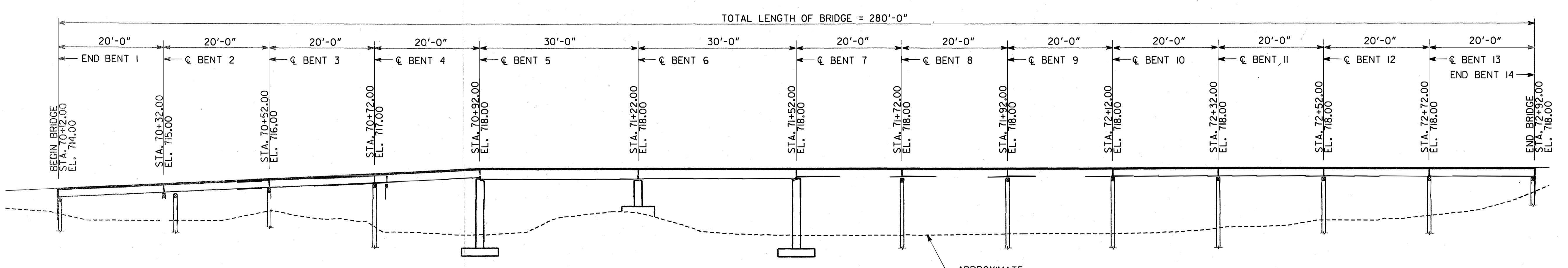
CONCRETE ----- CLASS A,  $f_c = 3500$  PSI

REINFORCEMENT STEEL ----- GRADE 60,  $f_y = 60,000$  PSI

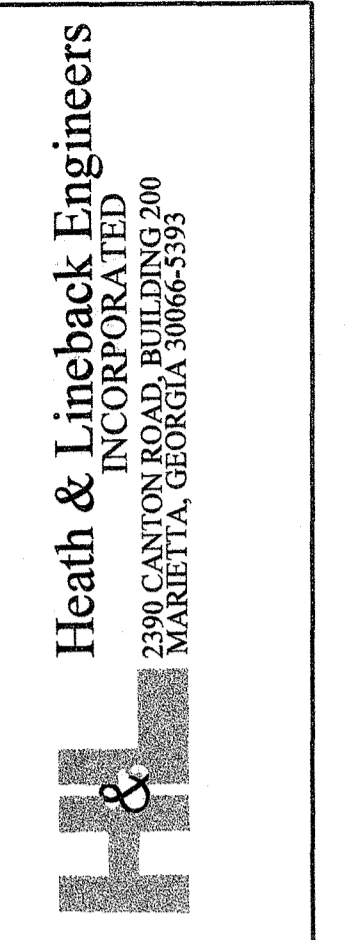


**PROFILE GRADE DATA**  
ALONG  $\epsilon$  BRIDGE

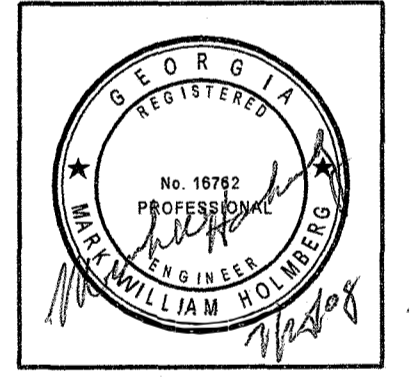
- NOTES:**
1. THE PROPOSED BRIDGE WILL HAVE A FLAT CROSS SLOPE.
  2. ELEVATIONS AND STATIONS SHOWN ARE ALONG  $\epsilon$  PATH AT TOP OF DECK.



**ELEVATION**  
SCALE: 1" = 10'-0"  
HANDRAIL NOT SHOWN FOR CLARITY.



**South River Trail**  
Phase 4  
DeKalb County, Georgia

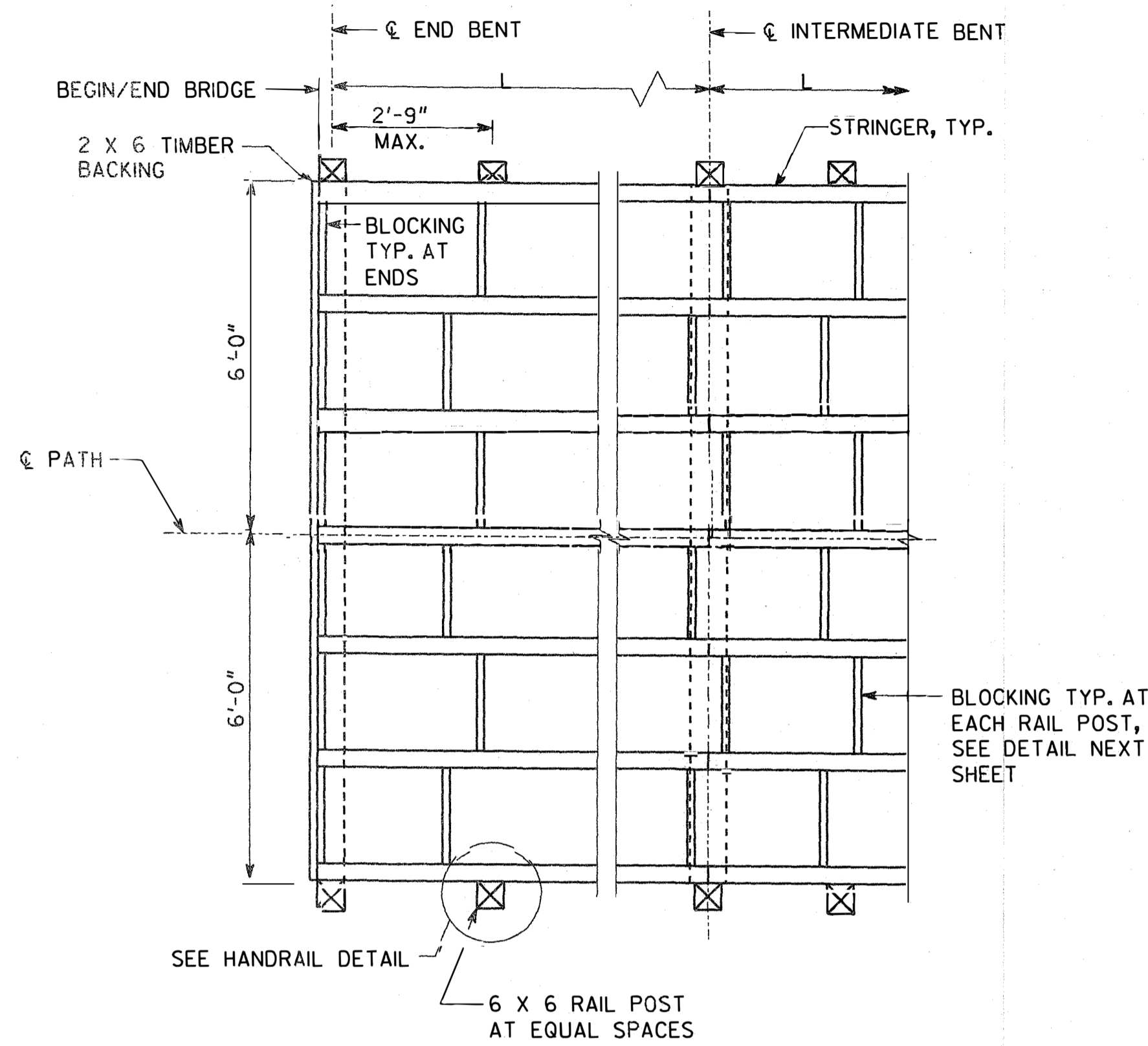


NO.	REVISION

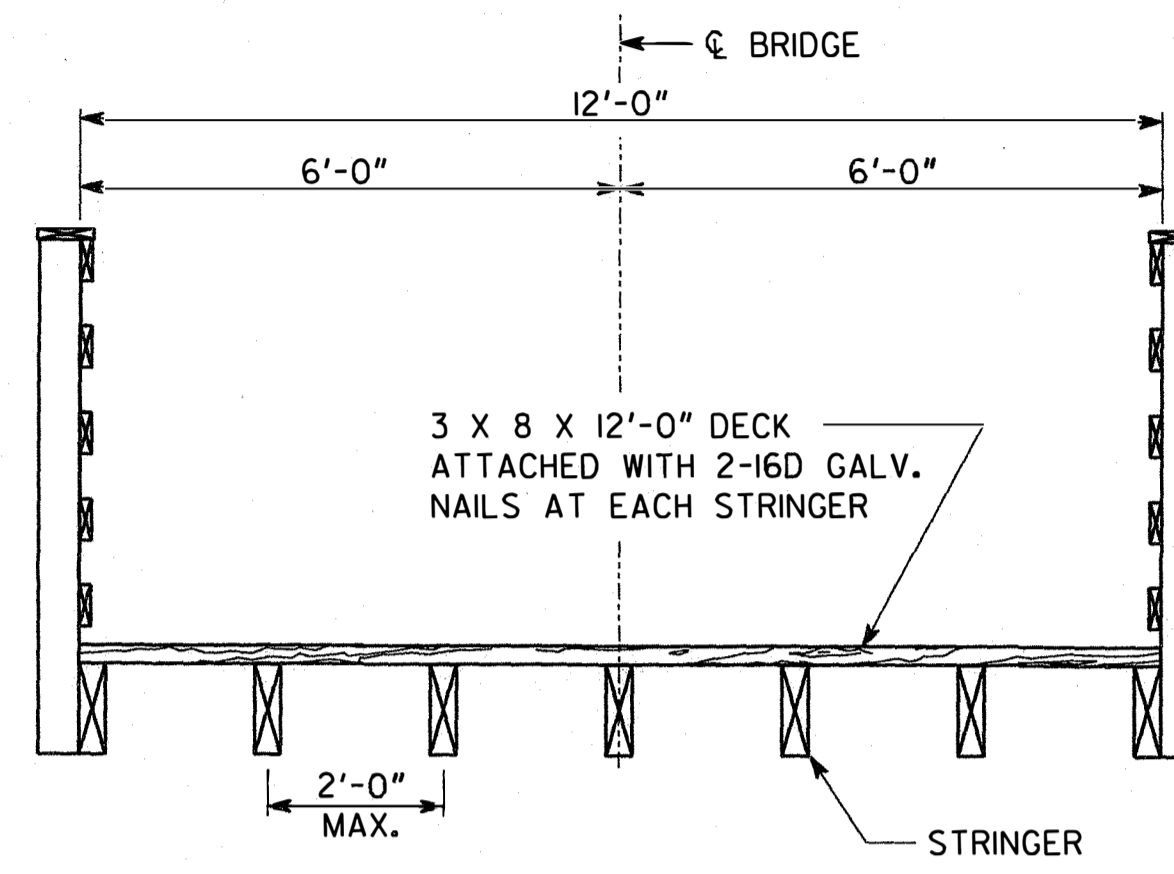
**PLAN AND ELEVATION**

DESIGNED BY TBS	FILE NAME
DRAWN BY TBS	SHEET
CHECKED BY MAY 2008	35-001
PROJECT NO. 2008032	
DATE 07/25/2008	

NOT TO SCALE

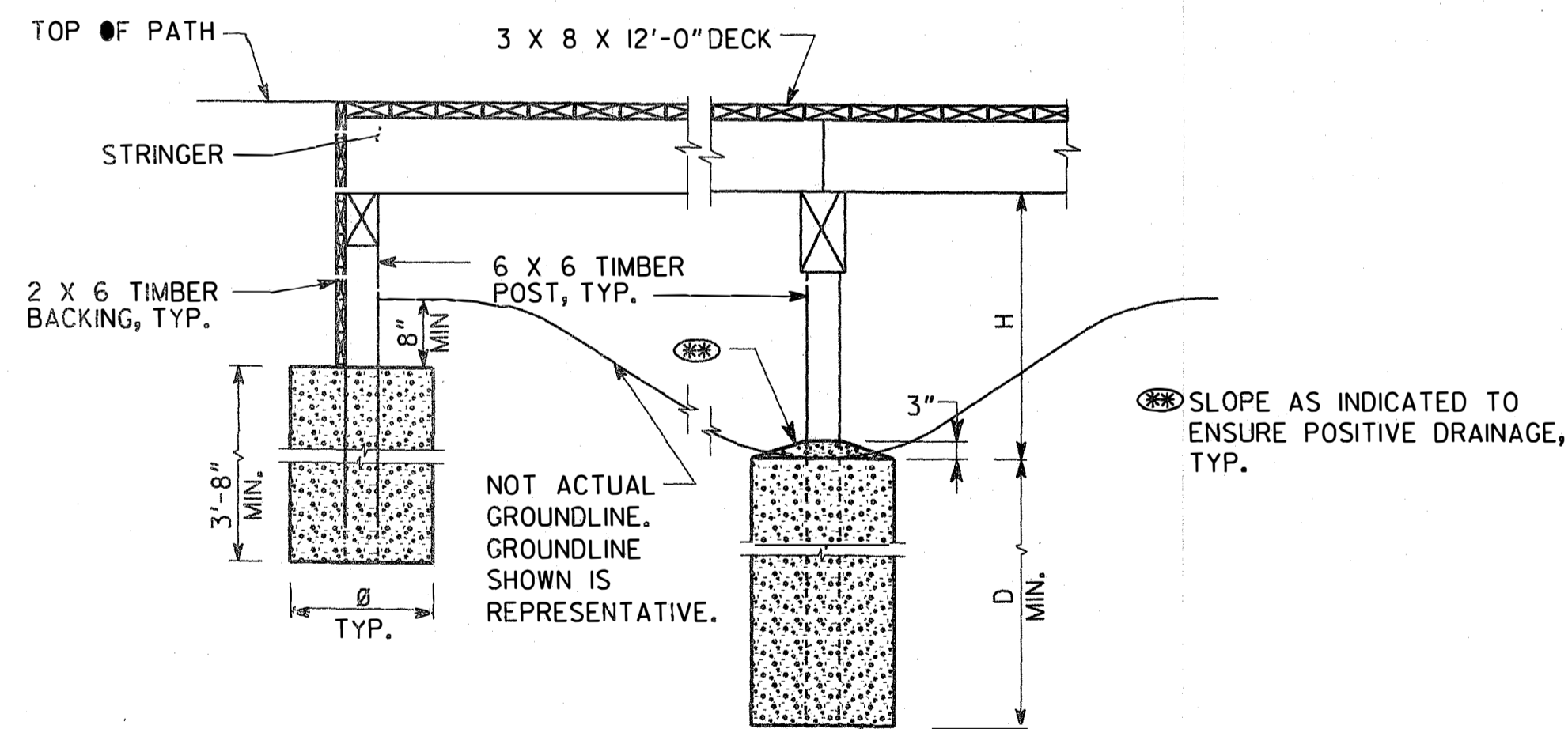


PLAN



TYPICAL SECTION

TIMBER POST FOUNDATION TABLE							
D=4'-0", Ø=2'-0"		D=5'-0", Ø=2'-0"		D=4'-0", Ø=3'-0"		D=5'-0", Ø=3'-0"	
L	H	L	H	L	H	L	H
1'-7"	1'-4"	8'-12"	1'-4"	-	-	13'-18.5"	1'-4"
1'-7"	5'-8"	8'-9"	5'-8"	9'-16.5"	5'-8"	17'-20"	5'-8"

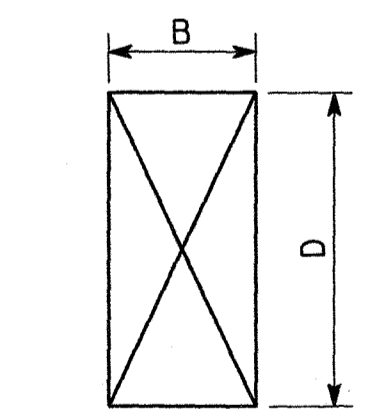


ELEVATION

NOTE: HANDRAIL NOT SHOWN FOR CLARITY

STRINGER SELECTION TABLE						
NO. 2 DENSE SOUTHERN PINE						
NOMINAL STRINGER SIZE (IN) (B X D)	MAXIMUM SPAN, L*	MINIMUM BEARING LENGTH (IN)	BLOCKING SIZE (IN)	MINIMUM END BENT CAP SIZE (IN)	MINIMUM INTERMEDIATE BENT CAP SIZE (IN)	F <sub>b</sub> (NORMAL DURATION) (PSI)
4 X 12	8'-0"	3/4	2 X 10	6 X 10	8 X 14	1150
4 X 16	12'-0"	3/2	2 X 12	6 X 10	8 X 14	1035
** 5 X 15/8	18'-0"	2/2	2 X 12	6 X 10	8 X 14	SPECIAL DESIGN
** 5 X 16/2	20'-0"	2 3/4	2 X 12	6 X 10	8 X 14	
** 5 X 17/8	24'-0"	2 3/4	2 X 12	SPECIAL DESIGN		
** 5 X 19/4	26'-0"	2 3/4	2 X 12	SPECIAL DESIGN		
** 5 X 20/8	30'-0"	2 3/4	2 X 12	SPECIAL DESIGN		

\* SIMPLE SPAN WITH "L" MEASURED CENTER-TO-CENTER OF BEARINGS.  
 \*\* ACTUAL FINISHED GLULAM DIMENSIONS



B = STRINGER WIDTH  
 D = STRINGER DEPTH

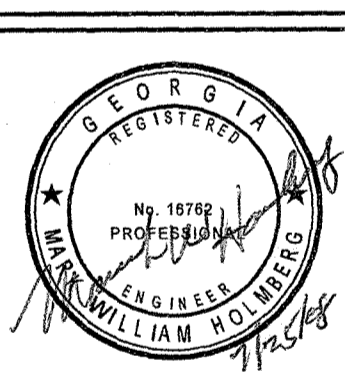
STRINGER

GENERAL NOTES

- THESE DRAWINGS ARE FOR LONGITUDINAL STRINGER/TRANSVERSE DECK TIMBER BRIDGES CONSTRUCTED OF SOUTHERN PINE. THE DESIGNS ARE APPLICABLE FOR 12'-0" WIDE RECTANGULAR BRIDGES WITH CENTER-TO-CENTER SPANS ACCORDING TO STRINGER SELECTION TABLE. BRIDGES MAY BE MULTIPLE SPAN WITH ANY COMBINATION OF ACCEPTABLE SPAN LENGTHS.
- DESIGNS COMPLY WITH THE STANDARD SPECIFICATIONS FOR HIGHWAY BRIDGES (17TH EDITION, 2002), PUBLISHED BY THE AMERICAN ASSOCIATION OF STATE HIGHWAY AND TRANSPORTATION OFFICIALS (AASHTO). RAIL DETAIL DOES NOT COMPLY WITH AASHTO STATIC CRITERIA.
- BRIDGES ARE DESIGNED FOR THE FOLLOWING LOADS:  
 VEHICLE: 5 TON MAXIMUM LOAD  
 PEDESTRIAN: 85 PSF (NO REDUCTION)
- SAWEN LUMBER SHALL COMPLY WITH THE REQUIREMENTS OF AASHTO M168.
- ALL LUMBER SHALL BE VISUALLY GRADED NO. 2 DENSE OR BETTER SOUTHERN PINE DIMENSION LUMBER OR TIMBERS AS SPECIFIED.
- GLULAM STRINGERS SHALL HAVE THE FOLLOWING PROPERTIES:  
 F<sub>b</sub> = 2400 PSI (NORMAL DURATION)  
 F<sub>v</sub> = 200 PSI  
 E = 1,800,000 PSI
- SAWEN LUMBER STRINGERS SHALL HAVE THE FOLLOWING PROPERTIES:  
 F<sub>b</sub> = SEE STRINGER SELECTION TABLE  
 F<sub>v</sub> = 90 PSI  
 E = 1,600,000 PSI
- GLULAM DIMENSIONS GIVEN ARE ACTUAL FINISHED DIMENSIONS.
- THE MAXIMUM THICKNESS OF DECK SHALL BE NO GREATER THAN 1/2 IN. LARGER THAN ITS NOMINAL THICKNESS. THE MAXIMUM WIDTH ALONG THE LENGTH OF DECK SHALL NOT EXCEED 3/8 IN.
- VARIATION IN DEPTH BETWEEN STRINGERS SHALL NOT EXCEED 3/8 IN. SO AS TO PROVIDE A FLAT SURFACE ACROSS THE WIDTH OF THE BRIDGE TO ENSURE THE DECK HAS FIRM CONTACT WITH ALL STRINGERS.
- ALL SAWEN LUMBER SHALL BE TREATED IN ACCORDANCE WITH THE REQUIREMENTS OF AWPA STANDARD C14 WITH PENTACHLOROPHENOL CONFORMING TO AWPA STANDARD P8 IN HYDROCARBON SOLVENT, TYPE A, CONFORMING TO AWPA STANDARD P9.
- GLULAM AND DECK SHALL BE TREATED IN ACCORDANCE WITH AASHTO M13 AWPA STANDARD C14 WITH SUITABLE OILBORNE PRESERVATIVE CONFORMING TO AWPA STANDARD C28 AND P8 IN HYDROCARBON SOLVENT, TYPE A OR C.
- TREATED WOOD SHALL BE INSPECTED AND CERTIFIED IN ACCORDANCE WITH AWPA STANDARD M2.
- STEEL PLATES AND SHAPES SHALL COMPLY WITH THE REQUIREMENTS OF ASTM A36 OR MANUFACTURER'S REQUIREMENTS.
- BOLTS AND LAG SCREWS SHALL COMPLY WITH THE REQUIREMENTS OF ANSI/ASME STANDARD B18.2.1-1981, GRADE 2.
- WASHERS SHALL BE PROVIDED UNDER BOLT AND LAG SCREW HEADS AND NUTS THAT ARE IN CONTACT WITH WOOD.
- ALL STEEL CONNECTIONS AND FASTENERS SHALL BE GALVANIZED IN ACCORDANCE WITH AASHTO M11, AASHTO M232 OR ASTM A709 GRADE 36.
- TIMBER POST FOUNDATION HOLES SHALL BE AUGERED TO FIRM SOIL AND FILLED WITH CONCRETE TO INSURE ASSUMED FOUNDATION BACKFILL BEARING CAPACITY PROPERTIES PER CHATTAHOOCHEE CONSULTING GROUP'S REPORT OF SUBSURFACE CONDITIONS FOR THIS PROJECT. 2000 PSF ALLOWABLE BEARING CAPACITY.

Heath & Lineback Engineers  
 INCORPORATED  
 2500 CANTON ROAD  
 MARIETTA, GEORGIA 30066-5370

South River Trail  
 Phase 4  
 DeKalb County, Georgia

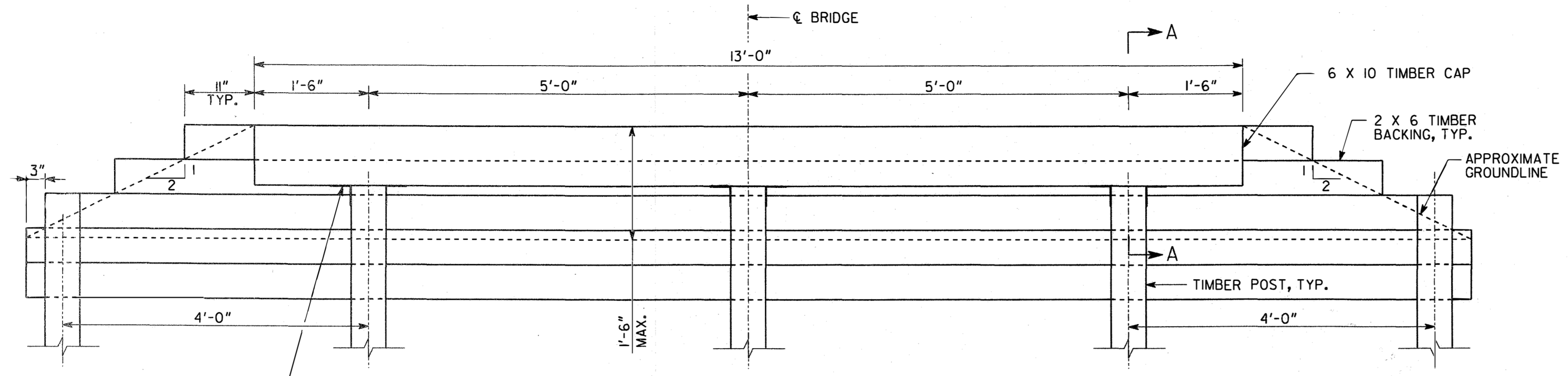


DESIGNED BY	TBS
DRAWN BY	TBS
CHECKED BY	MVH
PROJECT NO.	2008032
DATE	07/28/2008

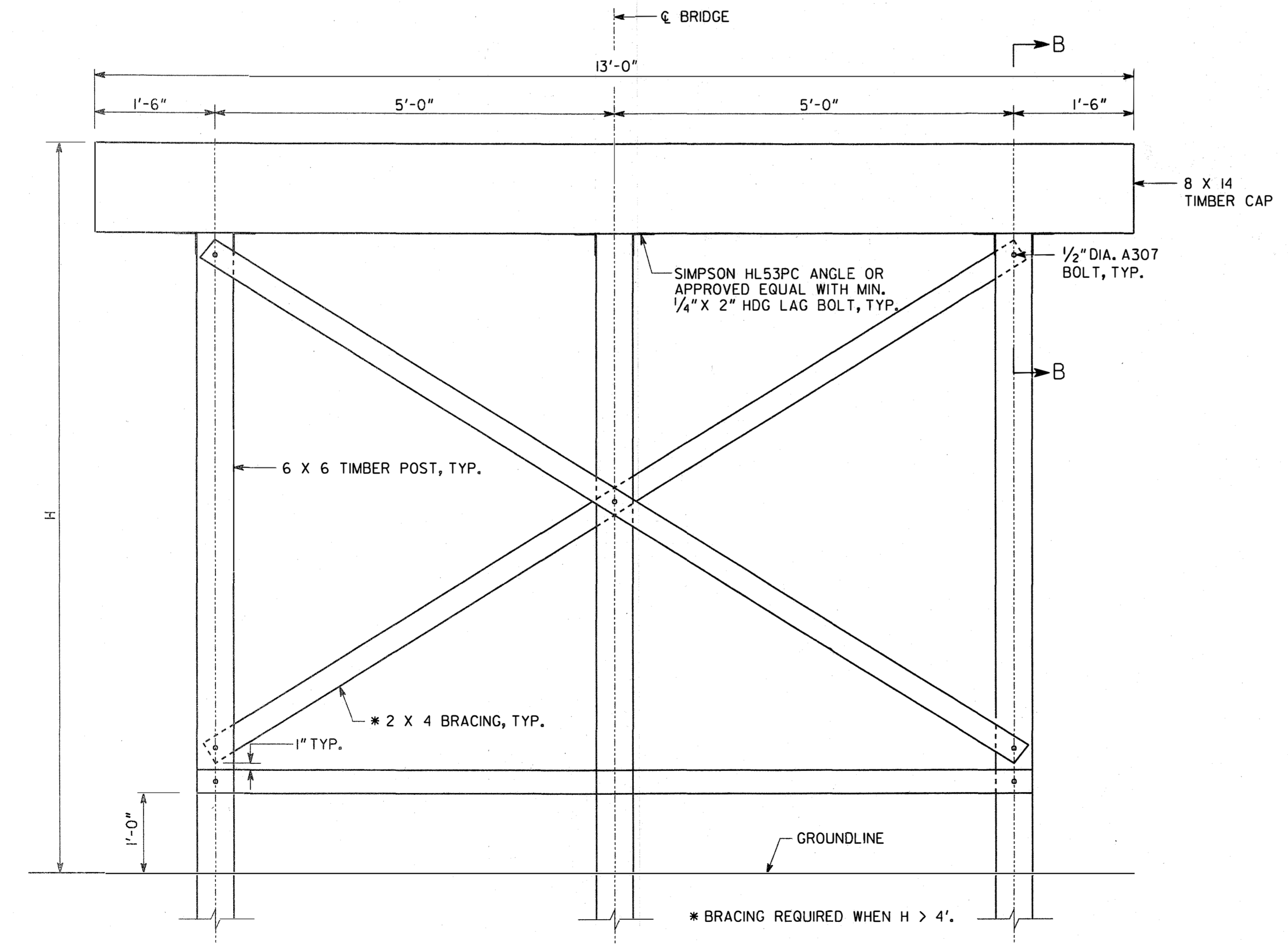
TYPICAL DETAILS 1

DESIGNED BY	TBS	FILE NAME	
DRAWN BY	TBS	SHEET	
CHECKED BY	MVH		
PROJECT NO.	2008032		35-002
DATE	07/28/2008		

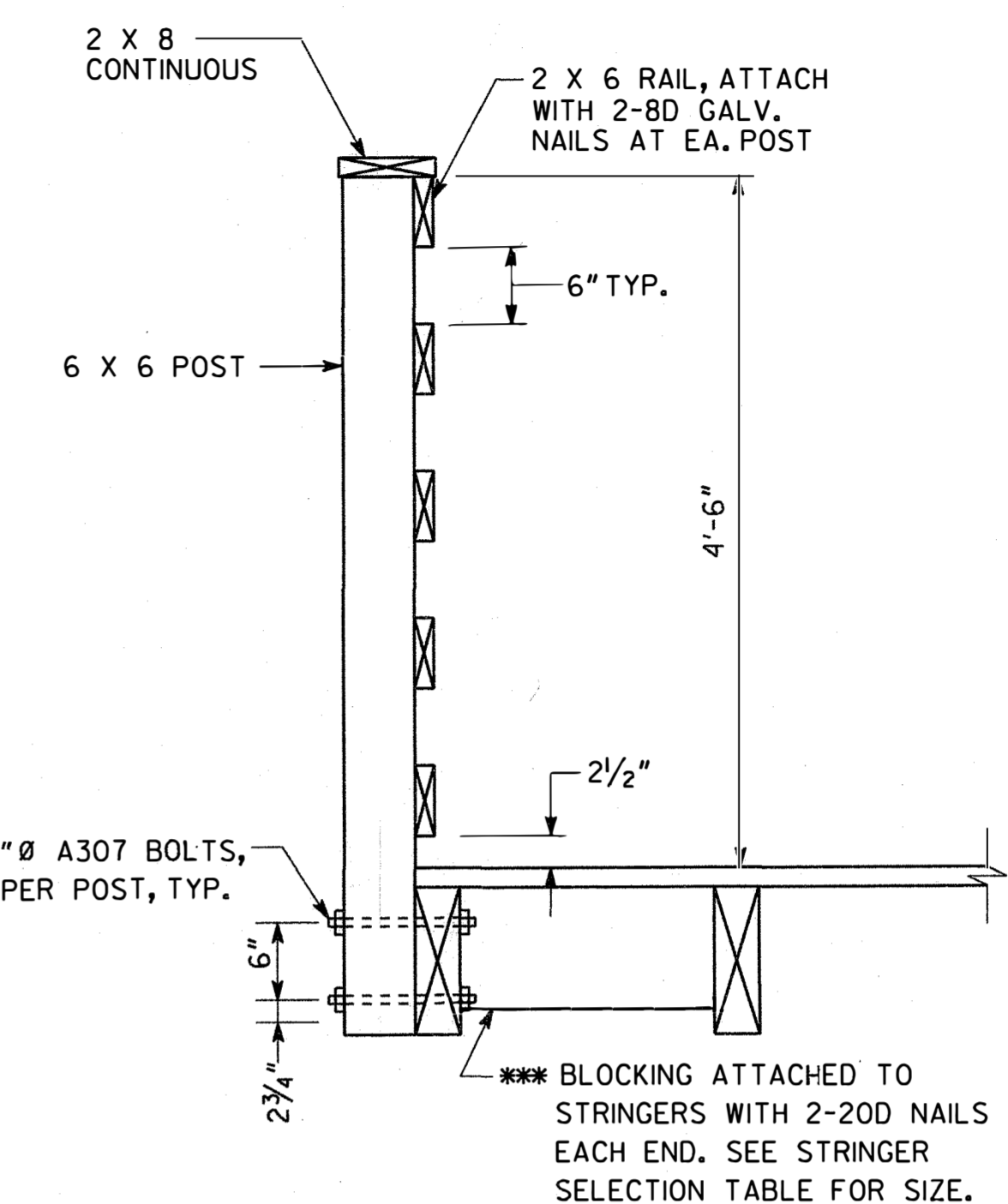
NOT TO SCALE



**TIMBER END BENT ELEVATION**  
SCALE: 1" = 1'-0"  
(END BENT SHOWN)  
(LOOKING BACK)

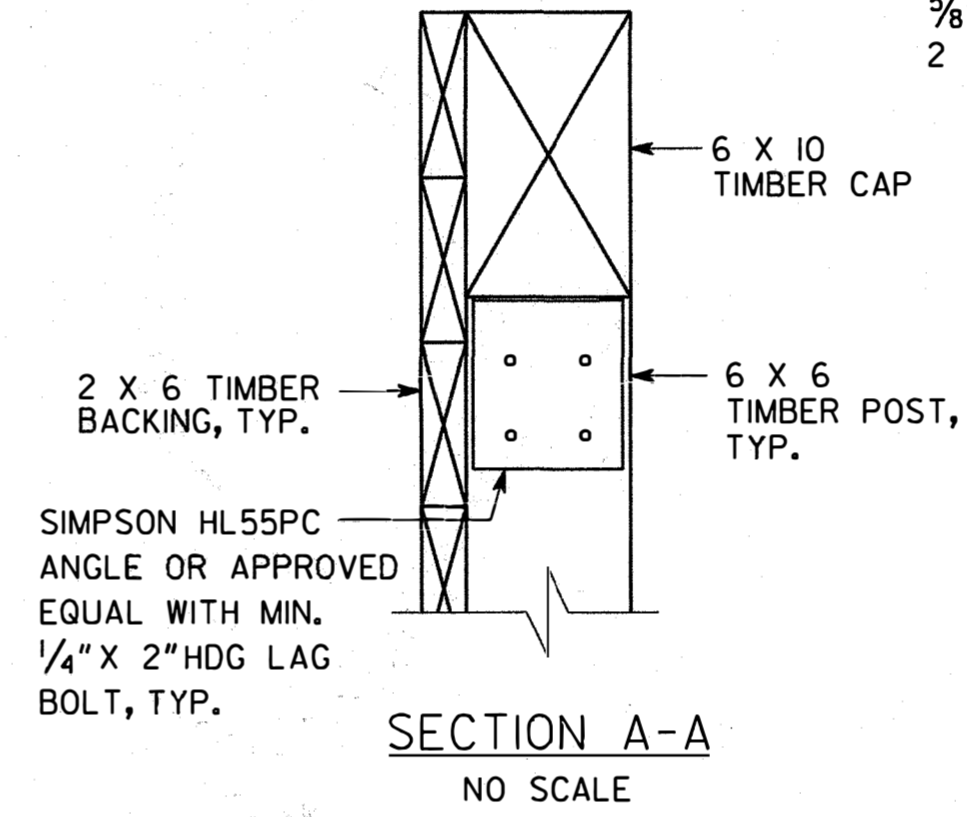


**TIMBER INTERMEDIATE BENT ELEVATION**  
SCALE: 1" = 1'-0"

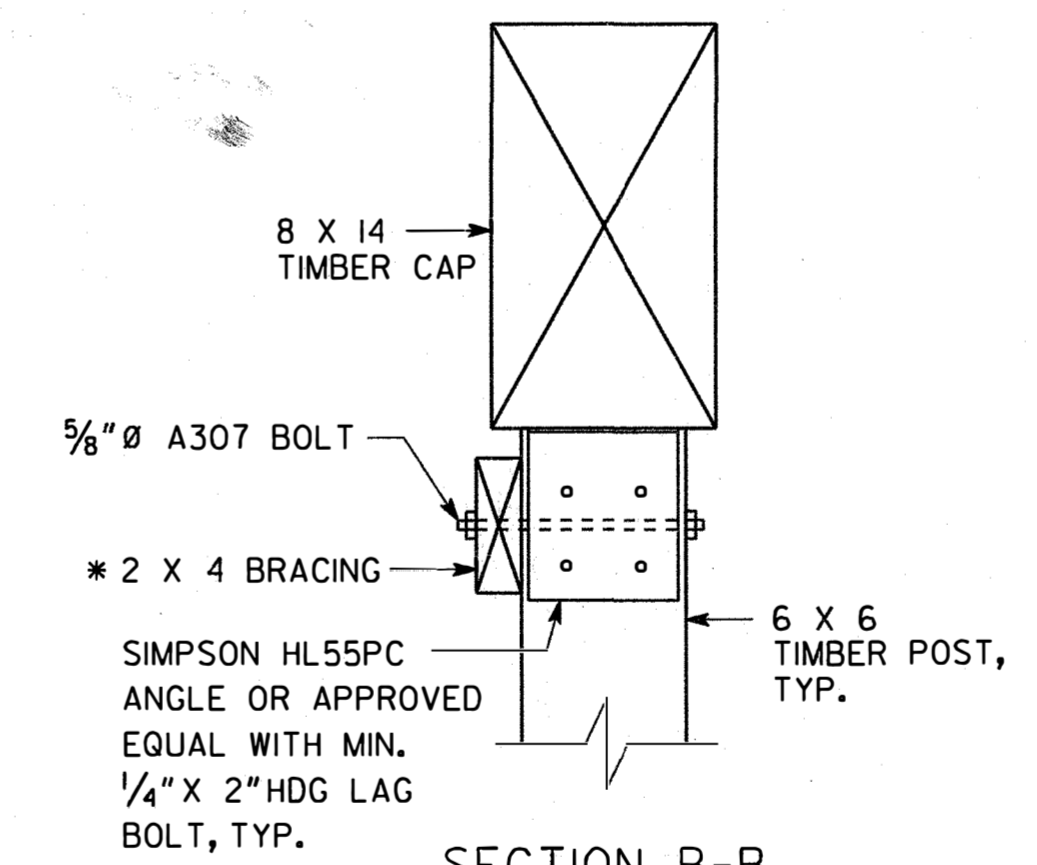


**HANDRAIL DETAIL**  
NO SCALE

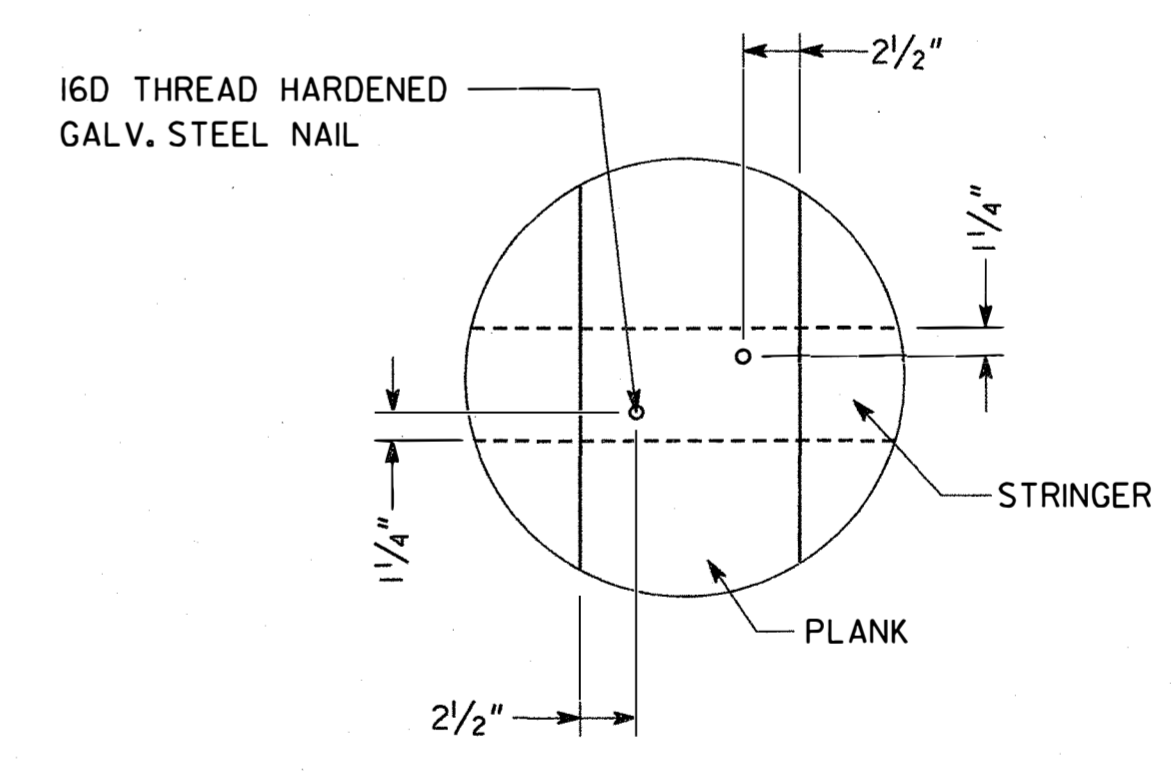
\*\*\* ADD ADDITIONAL BLOCKING IN EXTERIOR BAYS WITHIN 6" OF HANDRAIL POST LOCATIONS. LOCATION OF BLOCKING AT 1/3 POINTS MAY BE ADJUSTED TO AVOID POST CONNECTIONS.



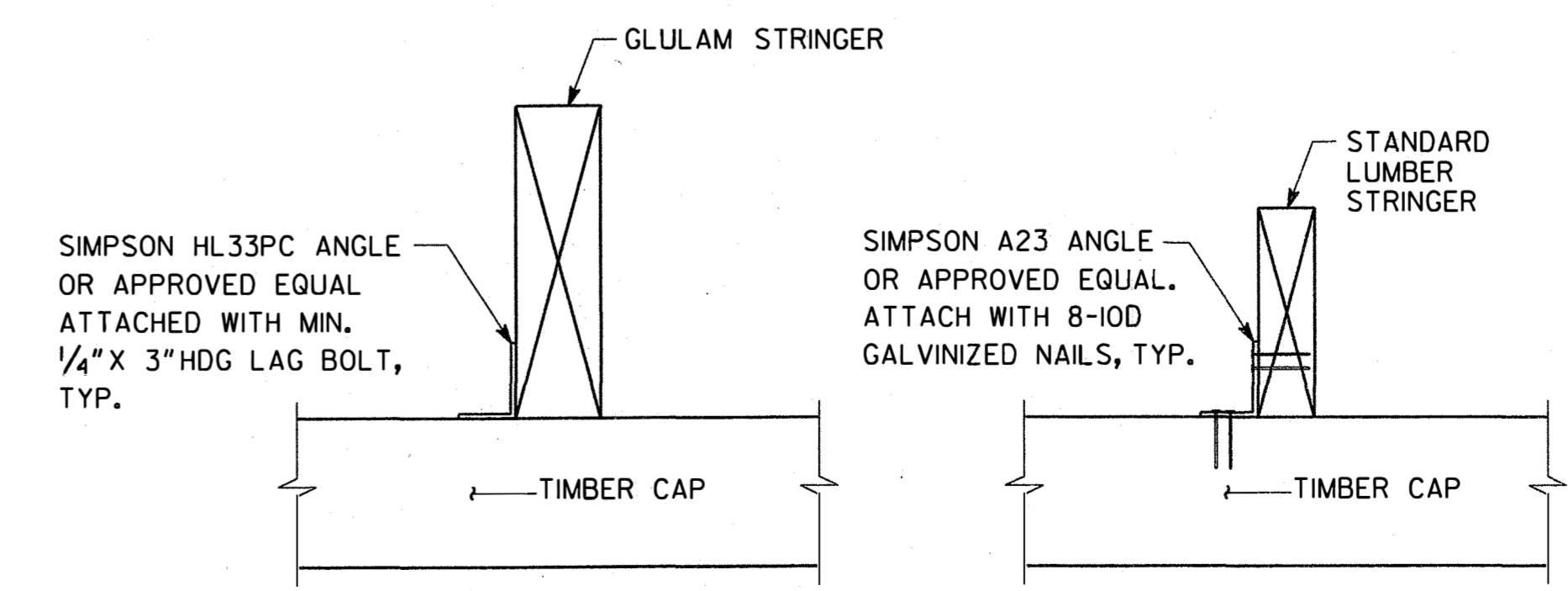
**SECTION A-A**  
NO SCALE



**SECTION B-B**  
NO SCALE



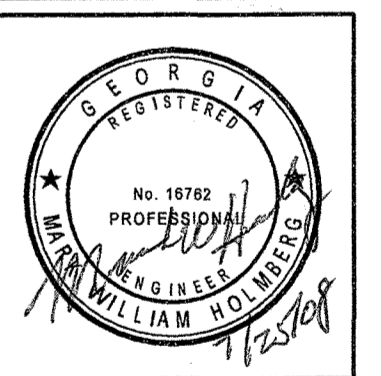
**PLANK ATTACHMENT DETAIL**  
NO SCALE  
NOTE: DRIVE NAILS AT SLIGHT ANGLE.



**TYPICAL BEARING DETAILS**  
NO SCALE

**Heath & Lineback Engineers**  
INCORPORATED  
2300 CANTON ROAD, BUILDING 200  
MARIETTA, GEORGIA 30066-5393

**South River Trail**  
Phase 4  
DeKalb County, Georgia



NO.	REVISIONS

**TYPICAL DETAILS 2**

DESIGNED BY TBS	FILE NAME
DRAWN BY TBS	
CHECKED BY MWH	
PROJECT NO. 20080320	
DATE 07/29/2008	
	SHEET 35-003

NOT TO SCALE