

Department of Purchasing and Contracting

March 30, 2022

TO: All Bidders under Invitation To Bid No. 22-101490

FROM: Department of Purchasing and Contracting, DeKalb County, Georgia

ADDENDUM NO. 2

ITB No. 22-101490 Gateways Landscape, Maintenance and Enhancements Project (Annual Contract with Two Options To Renew) , is hereby amended as follows:

1. This bid opening is April 6, 3:00pm Eastern via Zoom
<https://dekalbcountyga.zoom.us/j/8345554722>
2. Please find attached a detail drawing.
3. It is the responsibility of each bidder to ensure that they are aware of all addenda issued under this ITB. Please sign and return this addendum. You may contact Phyllis A. Head at phead@dekalbcountyga.gov before the bids are due to confirm the number of addenda issued.
4. All other conditions remain in full force and effect.

Phyllis A. Head

Procurement Manager
Department of Purchasing and Contracting

ACKNOWLEDGMENT

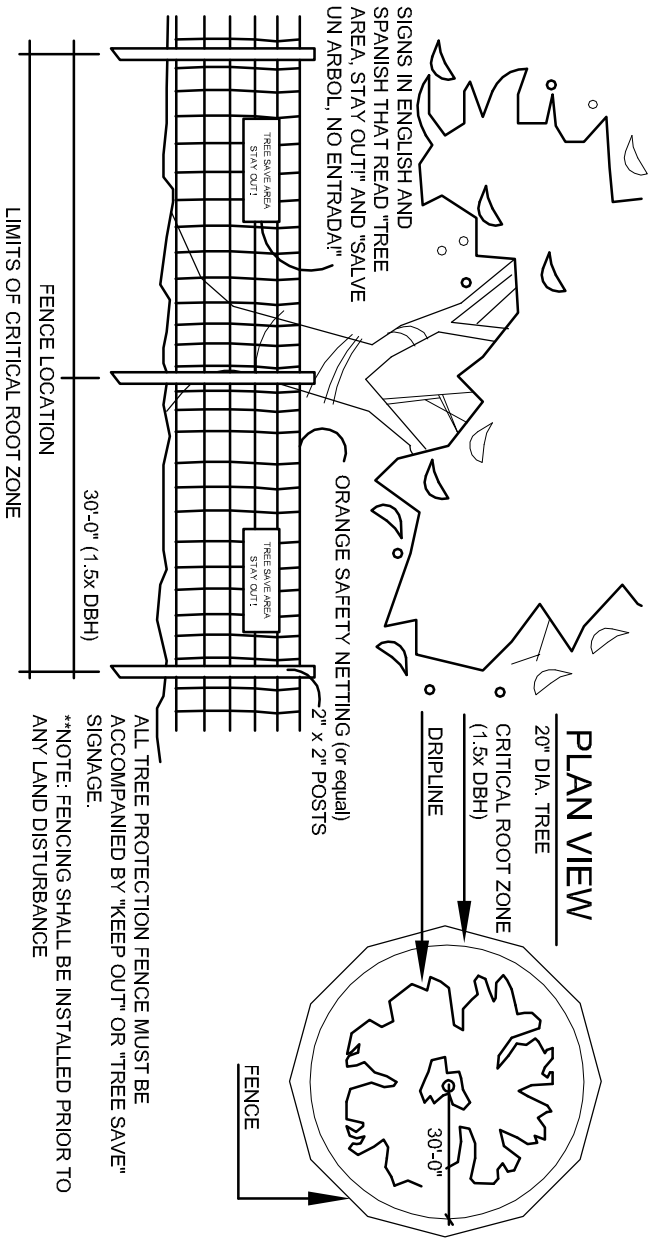
Date: _____

The above Addendum is hereby acknowledged:

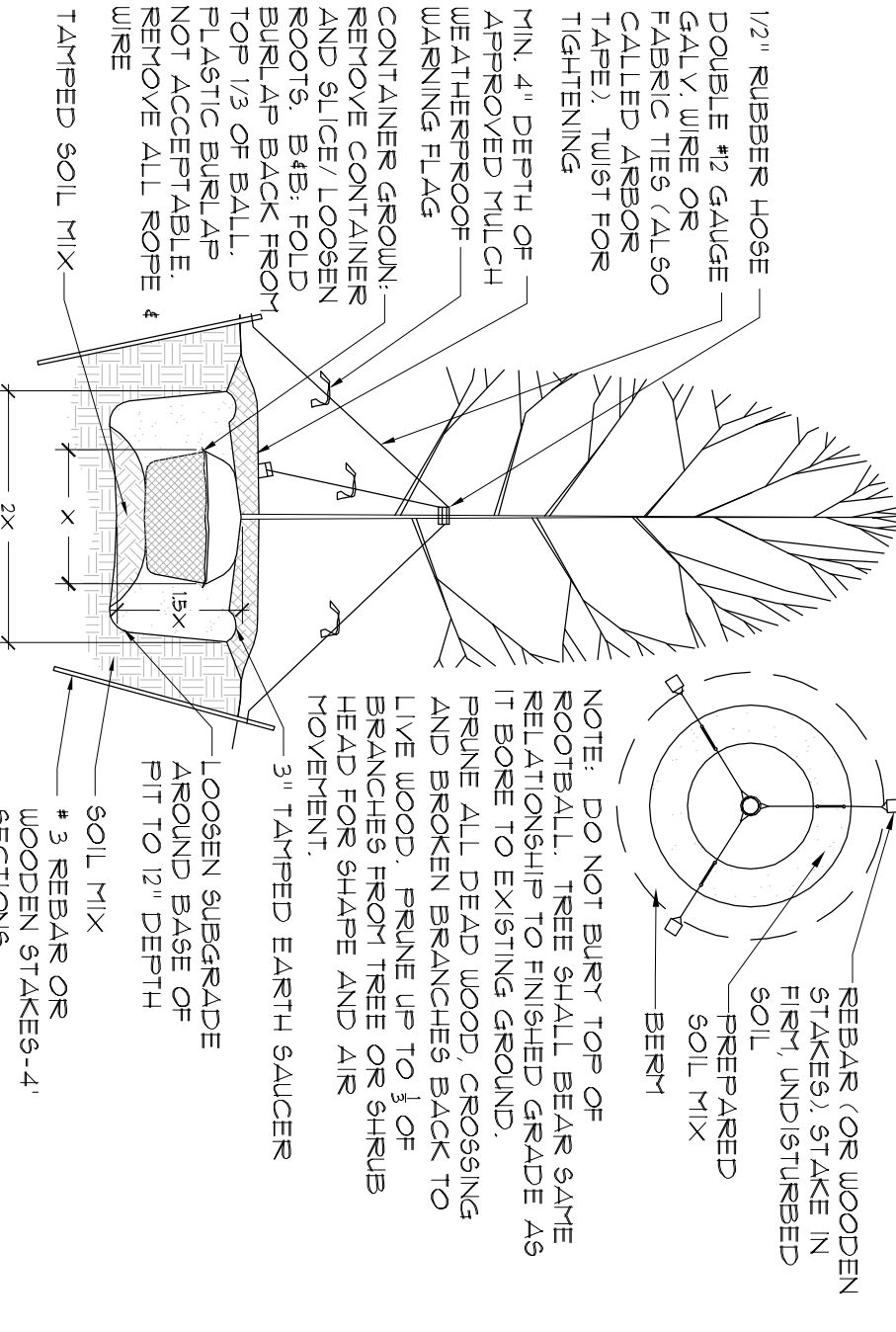
(NAME OF BIDDER)

(Signature)

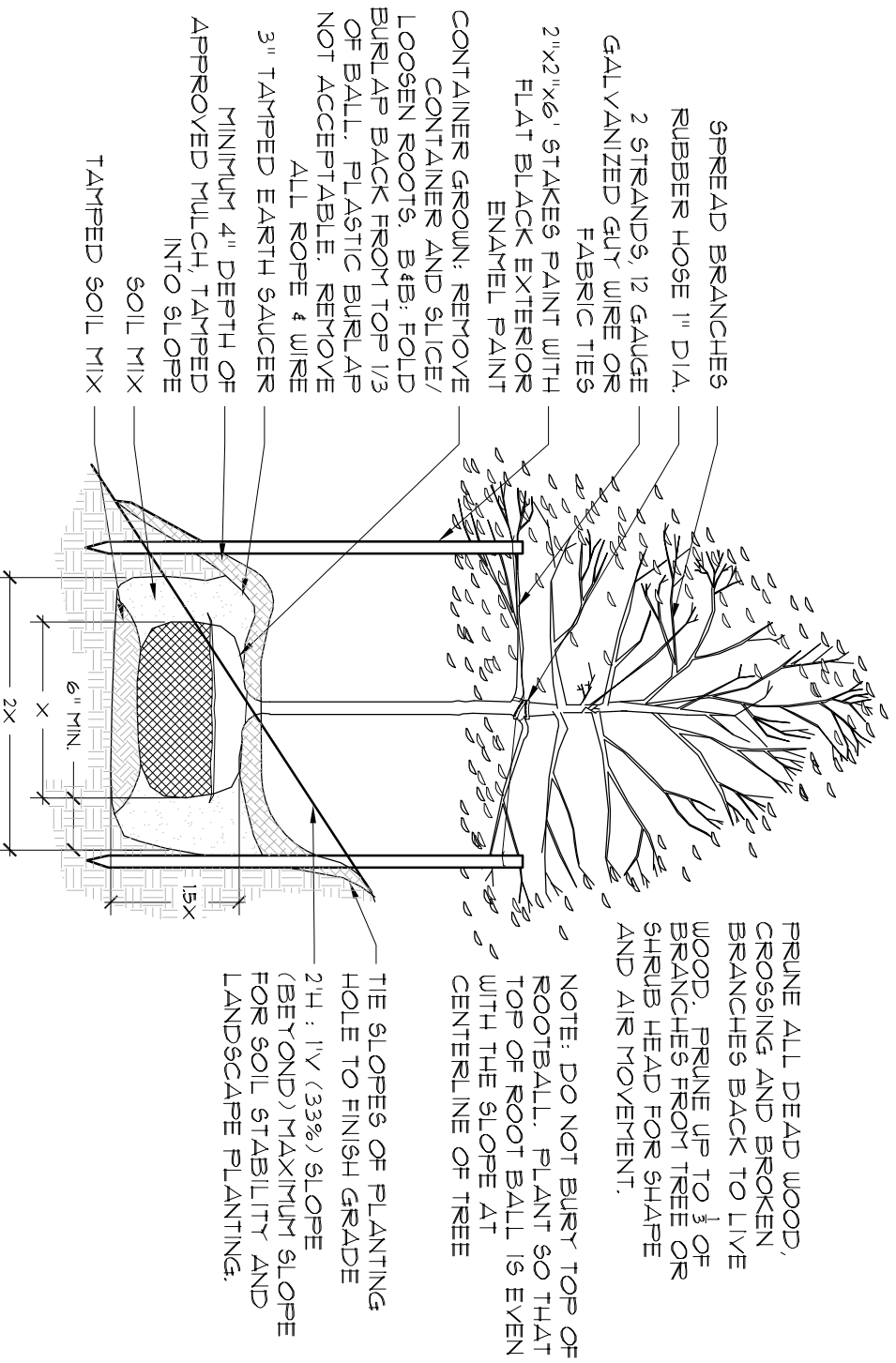
(Title)



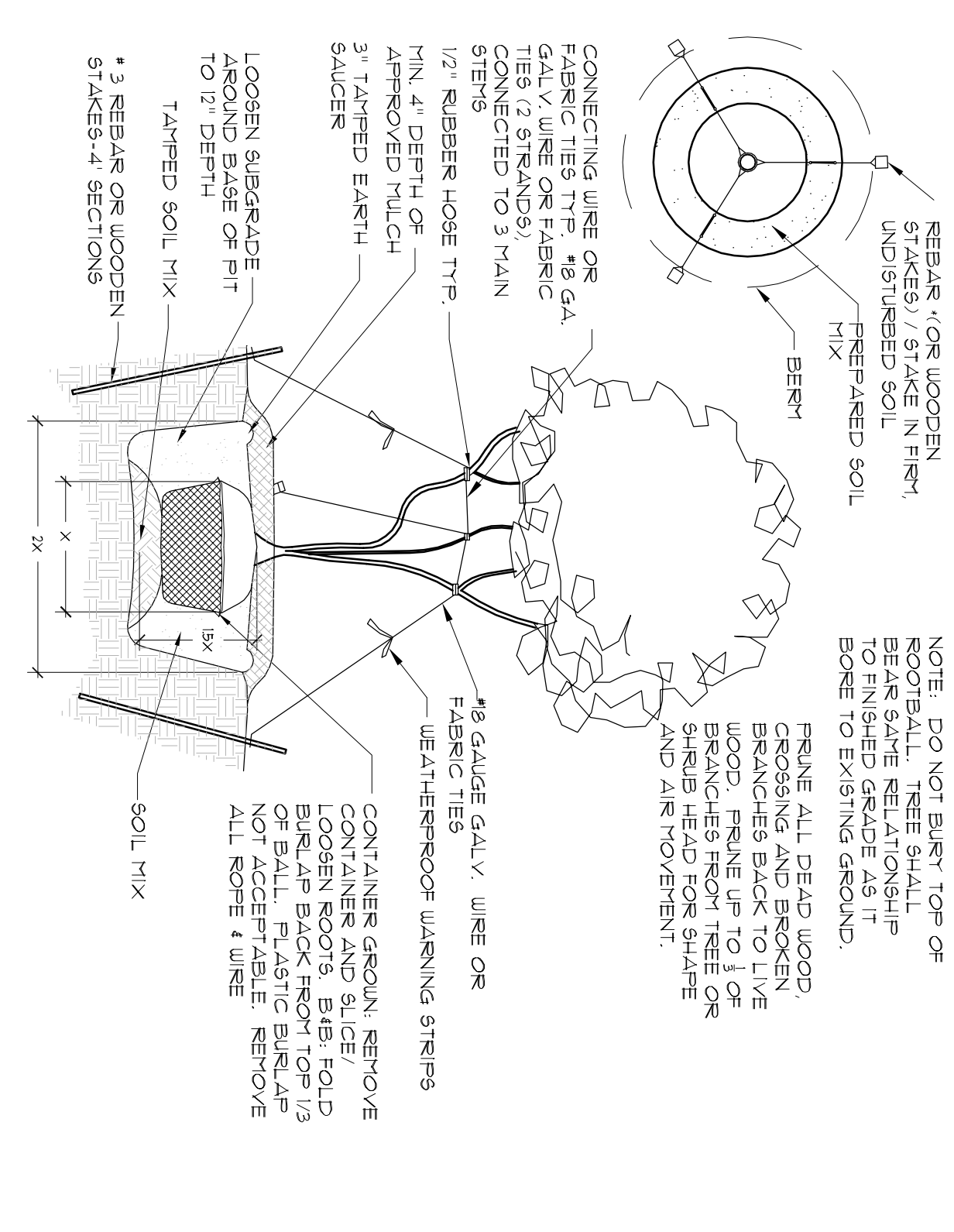
1 ACTIVE TREE PROTECTION (1.5x DBH)
NOT TO SCALE
DS-1 SECTION



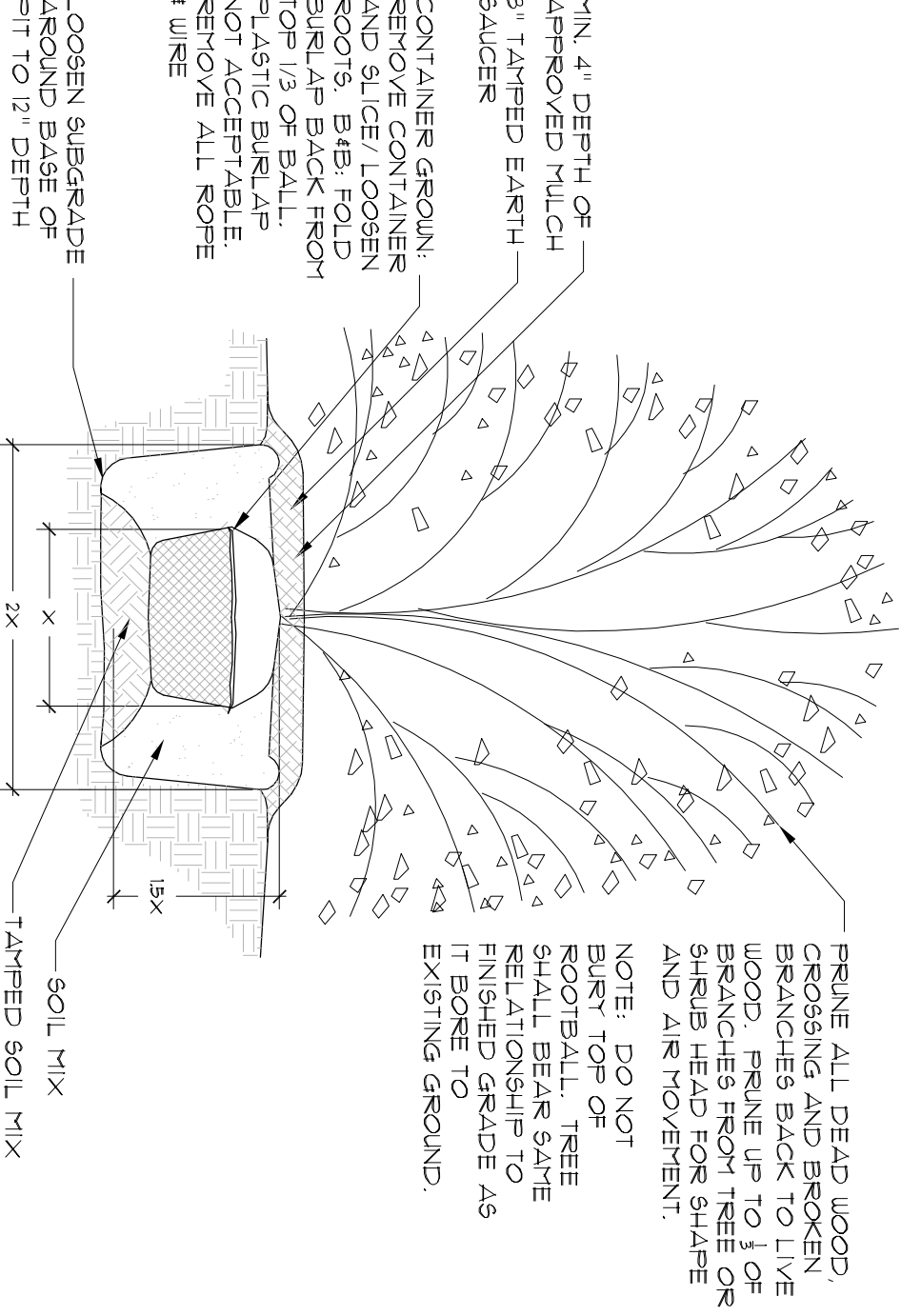
2 TREE PLANTING ON GRADE
NOT TO SCALE
DS-1 SECTION



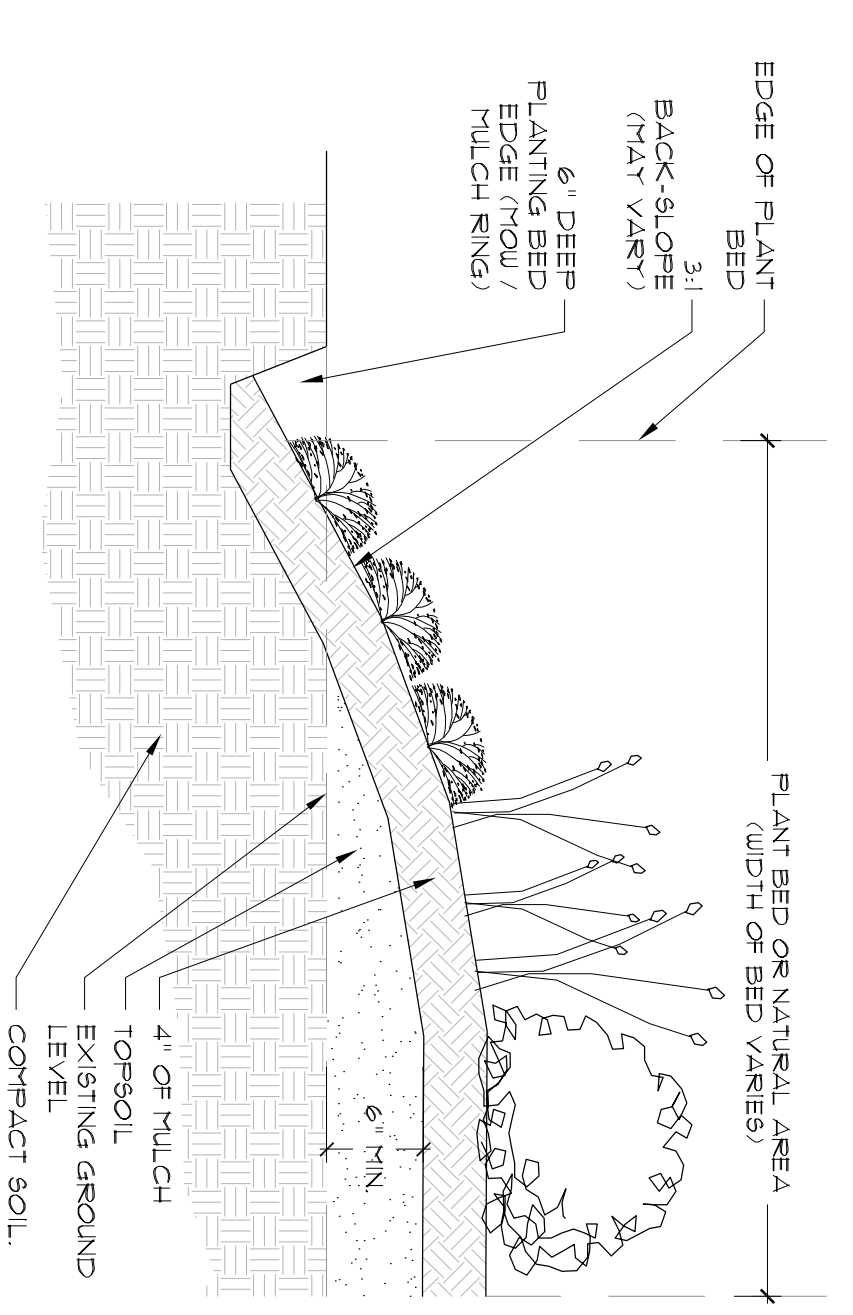
3 TREE PLANTING ON SLOPE
NOT TO SCALE
DS-1 SECTION



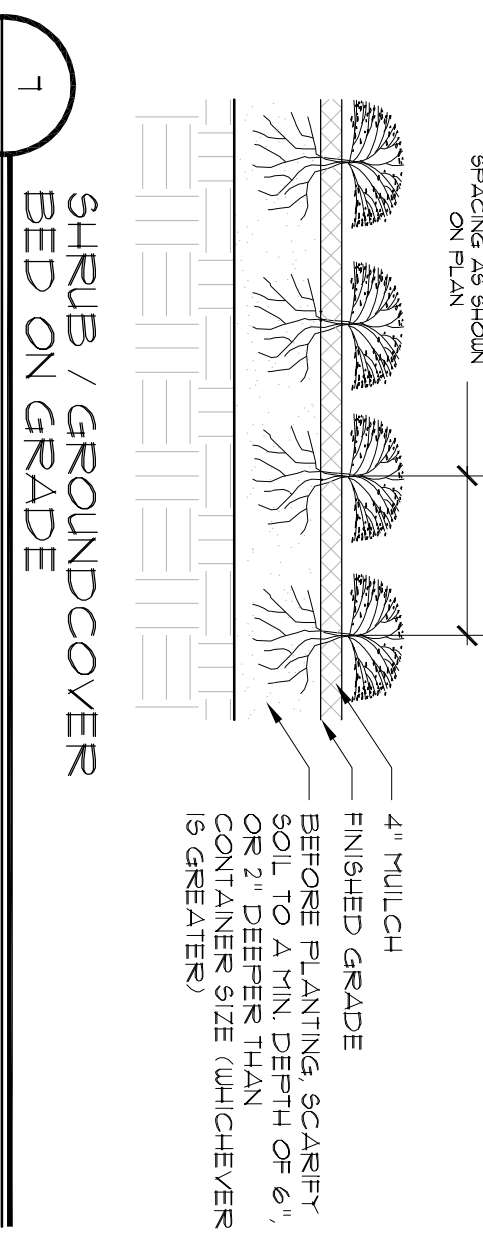
4 MULTI-STEM TREE PLANTING
NOT TO SCALE
DS-1 SECTION



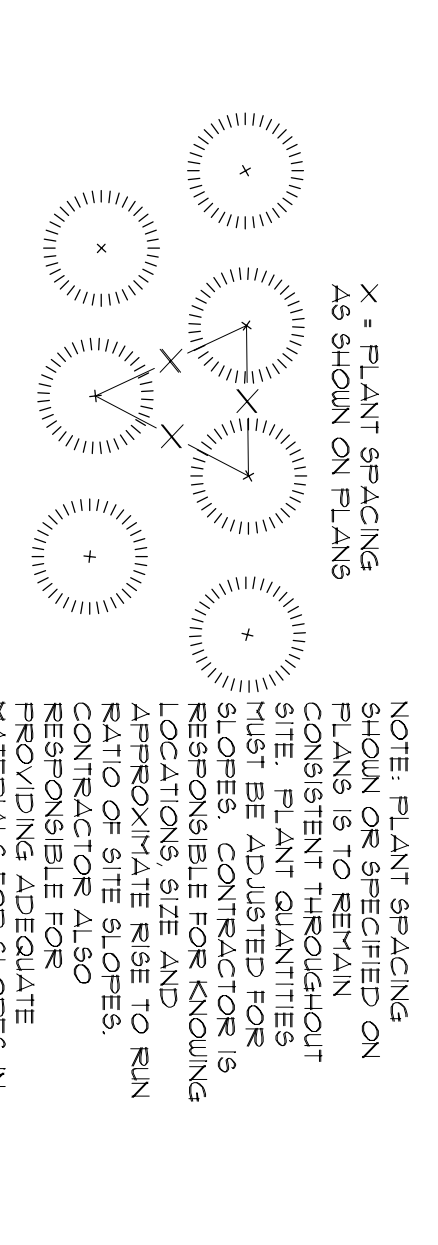
5 SHRUB PLANTING ON GRADE
NOT TO SCALE
DS-1 SECTION



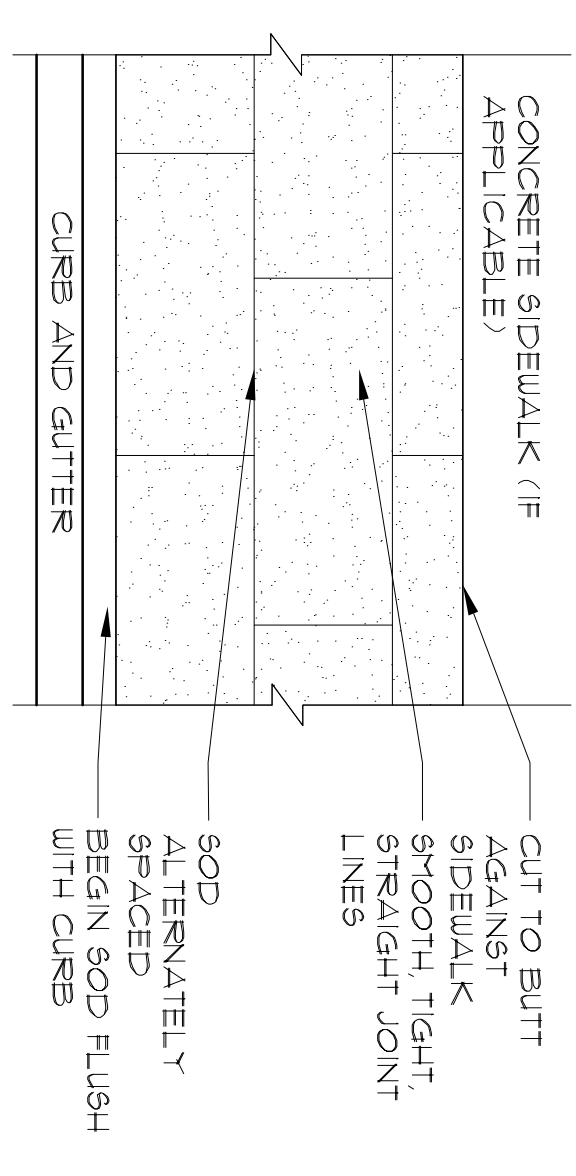
6 PLANTING BED EDGE
NOT TO SCALE
DS-1 SECTION



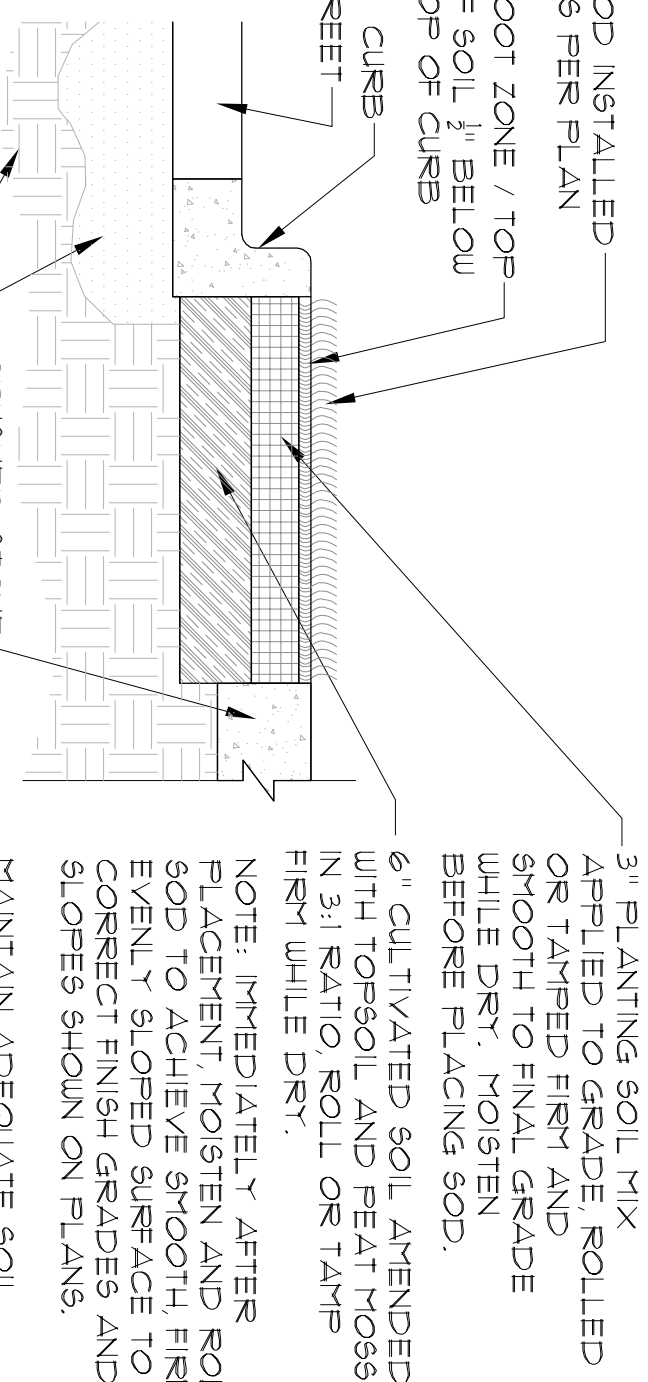
7 SHRUB / GROUNDCOVER BED ON GRADE
NOT TO SCALE
DS-1 SECTION



8 TYP. TRIANGULAR PLANT SPACING
NOT TO SCALE
DS-1 SECTION



9 SOD PLACEMENT
NOT TO SCALE
DS-1 PLAN



10 SOD PLACEMENT
NOT TO SCALE
DS-1 SECTION

GENERAL PLANTING & LANDSCAPING NOTES:

1. ALL PLANTS MUST BE HEALTHY, VIGOROUS MATERIAL, FREE OF PESTS AND DISEASE.
2. ALL PLANTS MUST BE CONTAINER GROWN OR BALLED AND BURLAPPED AS INDICATED IN THE PLANT LIST.
3. ALL PLANTS MUST BE SPECIALLY HANDLED AND STORED TO PREVENT DRYING AND DAMAGE.
4. ALL PLANTS MUST BE SPECIALLY HANDLED AND STORED TO PREVENT DRYING AND DAMAGE.
5. ALL PLANTING AREAS MUST BE COMPACTED TO A DEPTH OF 4\"/>

NOTE: ALL PLANTS MUST BE HEALTHY, VIGOROUS MATERIAL, FREE OF PESTS AND DISEASE. ALL PLANTS MUST BE CONTAINER GROWN OR BALLED AND BURLAPPED AS INDICATED IN THE PLANT LIST. ALL PLANTS MUST BE SPECIALLY HANDLED AND STORED TO PREVENT DRYING AND DAMAGE. ALL PLANTING AREAS MUST BE COMPACTED TO A DEPTH OF 4\"/>

NOTE: SOD SHALL NOT HAVE GAPS OF GREATER THAN 1/4\"/>

NOTE: ALL DISTURBED AREAS ARE TO BE PLANTED (SODDED, SEEDED, MULCHED OR OTHERWISE LANDSCAPED). SOD AND SEED CALCULATIONS SHOWN IN PLANTLIST ARE ONLY FOR AREAS DESIGNATED TO BE COVERED WITH SOD OR SEED ABOVE. ANY ADDITIONAL AREAS THAT ARE BASE AFTER CONSTRUCTION SHALL BE COVERED WITH SOD OR SEED ABOVE. ANY ADDITIONAL AREAS THAT ARE BASE AFTER CONSTRUCTION SHALL BE COVERED WITH SOD OR SEED ABOVE.

BUILDABLE DESIGNS
Ryan P. Hart
Principal
ryan@buildabledesigns.com

| REVISIONS | BY |
|-----------|----|
| | |
| | |
| | |

DEKALB COUNTY PUBLIC WORKS DEPARTMENT - SANITATION DIVISION
PROPOSED LOCATIONS:
CANDLER ROAD @ I-20 INTERSECTION
PANOLA ROAD @ I-20 INTERSECTION
WESTLEY CHAPEL ROAD @ I-20 INTERSECTION
CHAMBLEE-TUCKER ROAD @ I-285 INTERSECTION
CHAMBLEE-TUCKER ROAD MEDIAN
FLATSHOALS PKWY. MEDIAN

JOB #: 22-105
SCALE: AS SHOWN
DATE: MARCH 22, 2022
DRAWN BY: RPH
PLANTING DETAILS DS-1