

MARCH 4, 2022

TO: All Bidders under Invitation to Bid No. 21-101473

FROM: Department of Purchasing and Contracting, DeKalb County, Georgia

ADDENDUM NO. 2

Invitation to Bid (ITB) No. 21-101473 – 2022 Gas Collection and Control System (GCCS) Expansion at Seminole Road MSW Landfill, is hereby amended as follows:

A. The following questions were submitted and received pertaining to this ITB; the County's responses are as follows:

Question 1: What is the width/length of the roll of 40-mil LLDPE the site will order?

Response: **The site will order the industry standard 23ft x 500 ft roll.**

Question 2: Please confirm that the contractor is to utilize the roll of 40-mil LLDPE Geomembrane to fabricate skirts for all above ground pipe infrastructure installed by the contractor under this scope, and not any other existing infrastructure.

Response: **Yes.**

Question 3: Does the landfill have a clean backfill material that the contractor can utilize as backfill for pipeline trenches? Where is the borrow pit located? Please confirm that the contractor should not count on the county personnel to load the contractor's trucks with backfill soils.

Response: **Yes, the landfill has clean back fill material on site. The borrow area is located directly west of our long-term compost storage area, and it's a short distance from the purposed construction area. Please see attached figure for the location. Our landfill operators will not be responsible for loading/ unloading or hauling of any material for the contractor. The contractor should have all the necessary equipment to be self-sufficient at all times.**

Question 4: Can on-site soils be used in lieu of top soils described in Part 2.04 - Topsoil in section 31 20 00 - Excavating, trenching, Backfilling & Grading? Or shall the contractor plan on providing an imported material abiding by the specifications therein?

Response: Yes, on-site soils can be used in lieu of top soils.

Question 5: Will on-site borrow soils be available for constructing drilling platforms? Or shall the contractor assume an imported off-site material is needed?

Response: Onsite soils from the borrow area can be used for constructing drilling platforms.

Question 6: On the bid drawings - Sheet 7 - Detail 4 - This depicts the perforated piping pattern as 8" HDPE, however, the well casings are to be 8" & 12" SCH80 PVC. Please confirm that this perforation pattern applies to the PVC well casings in vertical extraction wells.

Response: All wells have PVC casings, and this detail applies to all wells. This has been corrected in the Drawings attached.

Question 7: On sheet 7 of the bid drawings - Details 1 & 2 - Detail 2 depicts a 12" SCH80 well casing completion with a dewatering well schedule table next to it. Are these well depths calculated into the 8" SCH80 completion line item # 4 with a total footage of 1902 VF? Should the bid quantity for line item # 5 be 190 VF and 1712 for line item #5?

Response: We will be retaining the quantity for line item 4 in case additional well depth is required during the project.

Question 8: If Line item # 12 - 4-inch HDPE SDR 11 Liquid Conveyance Line is accepted versus the 3-inch FM, will the site provide 8,000 LF of 4" DR11 piping? If the 4" option is accepted, will the contractor be allowed to adjust their pricing for FM valve stub ups and FM isolation valves?

Response: **Line item 12 has been removed from the Bid form and Measurement and Payment Spec.**

Question 9: May granular bentonite be used for completion of the LFG Extraction wells in lieu of pellets or chips?

Response: **No.**

Question 10: On the bid drawings - Sheet 7 - Detail 2 - Dewatering Extraction Well Detail - On the top of the well casing, there is a flange connection with a call out of 12” HDPE to PVC connection. Shall this be a SCH80 PVC to SCH80 PVC flange connection?

Response: **It shall be a SCH80 PVC to HDPE flange. The reducer above it is an HDPE Reducer.**

Question 11: Are there any prevailing wage requirements for this project?

Response: **No.**

Question 12: On the drawings - Sheet 10 - Detail 5 - Does the air release valve ARI Model # D-025 have to be reinforced nylon or Stainless steel?

Response: **Stainless Steel.**

Question 13: On the bid sheet - Items # 16 and 19 are described as 4-inch, however, the FM pipeline line item with a quantity is the 3”? Should the contractor bid these line items as 3” sized valves and fittings, or 4”?

Response: **This has been revised on the REVISED Bid Form, which can be found below.**

- Question 14:** On the drawings - Sheet 3 - Near GEW-N193B - A call out to “see note 19” - Is this meant to be note 17? Is the contractor to install a new 24” tee (port side reduced to 12”) with a new 24” flange connection, and reuse the reducers already in place taking the pipe down to 6”? Or shall the contractor plan on supplying new reducers from 24” to 6”?
- Response:** Yes, it is meant to refer to note 17. The contractor should plan on supplying new reducers. The note number references have been corrected in the attached drawing set.
- Question 15:** Are existing wells to be abandoned PVC or HDPE? What size are they?
- Response:** The wells are PVC and typically 8” and the vacuum stub ups are typically 6” HDPE. The air and forcemain stub-ups shall also be abandoned as needed.
- Question 16:** Do pumps need to be pulled from wells to be abandoned?
- Response:** Yes.
- Question 17:** Is water available on-site suitable for construction and seeding?
- Response:** Yes.
- Question 18:** Section 33 51 20 - LFG Header Isolation Valves - Part 2.01 - Valves - E. - These specifications call for 216 SS valve stems - Are carbon steel valve stems acceptable?
- Response:** Yes.
- Question 19:** Section 33 51 10 - Pipe and Pipe Fittings - Multiple sections call for “stainless hot dipped galvanized hardware” on mechanical connections. On the Drawings - Sheet 8 - Detail 6 - Note 1 - States stainless steel bolts and nuts will not be acceptable. Is hardware necessary for mechanical connections to be stainless or hot dipped galvanized?

Response: As specified in the Construction Drawing – “Nuts, bolts, and washers shall be hot-dip galvanized. Stainless steel bolts and nuts will not be permitted.” The back-up ring shall be ductile-iron.

Question 20: Is any asbestos containing waste anticipated to be encountered during trenching for this scope?

Response: The site does accept some asbestos. In case the contractor is to encounter this waste, they shall notify the site and engineers immediately and the path forward will be discussed.

Question 21: What size is the air & FM piping in the existing 24” header trench to where new isolation valves will be installed?

Response: Only the air isolation valves need to be installed. The Air line in the header trench is 3” and forcemains are 3” x6” dual-contained.

Question 22: Please explain the purpose of remote wellhead HCN-3. Will it need to be spliced onto the vacuum supply to the Horizontal Collector? Or will it control vacuum draw on GEW-N87?

Response: There is an existing 6” stub up from the horizontal collector at the location of HCN-3. The intention is that an additional stub-up at GEW-N87 will be used to add a wellhead on the existing stub-up at HCN-3.

Question 23: Where is the estimated active area of the landfill during construction?

Response: Cell 2 area is where the active tipping is taking place at the present. This will change in the future, and DeKalb sanitation and the engineer will work with the contractor to coordinate active area and construction impacts.

- Question 24:** Where is the borrow soil pit?
- Response:** See Response to question 3, as well as **OVERALL SITE TOPO AND AERIAL** figure below for the location.
- Question 25:** When is it expected that this bid will be awarded?
- Response:** Exact award date for this project cannot be determined this early in the solicitation, unfortunately. It is contingent upon Bidder's evaluation, recommendation for award, approval from our Board of Commissioners, and execution of the construction contract.
- Question 26:** On the bid sheet - Item No. 30 - Tie-in to Existing 24" Header - We count (2) 24" Tie-ins with (1) on the west end of sheet 3 - This seems to be a hard fused tee or E-Fuse into the existing 24" header with the port side of the tee reducing to 8". (2) - Sheet 3 - Near GEW-N193B - Full sized 24" tee with port side reducing to 12". Is the 3rd tie-in near GEW-N68? Is this not a 6" tie-in to the existing riser for GEW-N68, or is the contractor to install a new 24"x8" tee into the existing header?
- Response:** The tie in shall be next to the riser for GEW-N68 into the 24" header and the contractor shall install a new 24" full sized tee reduced to 8".
- Question 27:** Are E-fuse couplers acceptable for all 24" tie-ins?
- Response:** Yes.
- Question 28:** What is the DR rating on the existing 24" header?
- Response:** SDR 17

Question 29: On the bid sheet - Item No. 31 - Shall the contractor include costs for abandoning the 10” header?

Response: **6” line there will need to be cut and capped.**

Question 30: Please confirm that all existing vacuum risers that are being tied into are 6” in size.

Response: **Yes.**

Question 31: How deep are the tie-ins to the existing gas piping?

Response: **Please see the provided tie in elevations in the drawings, which can be found by clicking the link [HERE](#).**

Question 32: At the end of the base bid sheet there is \$200,000.00 allocated for flare yard upgrades and Modification. What are these “modifications” and will they be performed by the contractor awarded this contract?

Response: **The Flare Yard Upgrades and Modification Bid Form line item provides the allocated not-to-exceed budget for potential upgrades and modifications that may be needed at the flare yard. Potential modifications could include pipe reconfiguration/replacement, PLC/control logic modifications, installation /replacements of valves and meters, replacement of flare parts, etc. Specific details of the upgrades and modifications will be provided to the selected bidder for pricing after contract award.**

Question 33: On the bid sheet - Is the provided quantity for Line Item No. 23 include the valves needed for new stub up at wells in Phase 2A on sheet 11?

Response: **Yes.**

Question 34: Will abandonments or tie-ins require penetration through the final cover?

Response: No.

Question 35: Are there any 3"x6" dual contained abandonments associated with Item No. 40?

Response: No.

Question 36: On the bid sheet - Item No. 43 - Is the provided quantity only for liner skirts around LFG wells? Shall the contractor include its required labor and materials to install liner skirts around all newly proposed infrastructure above ground within this line item?

Response: Yes.

Question 37: On the drawings - Sheet 12 - Detail 4 - Is a 3"x6" Dual contained Ball valve with a valve stem extension an acceptable substitute for the use of this valve box?

Response: No.

Question 38: On the bid sheet - Item No. 46 - 3-inch Air Release Valve - Is a 3-inch threaded air release valve desired? Or shall the contractor reduce to 2" at the transition fitting and utilize the D-025 air release valve?

Response: It shall be a 2".

Question 39: On the bid sheet - Is there a detail for Item No. 54? Is it the same detail as detail 2 on sheet 10, but 3" in size?

Response: Yes, these are valves for the isolation valves to be installed on the existing air line along the out of waste header line.

Question 40: Is the contractor required to re-seed disturbed construction areas that were not previously covered in grass?

Response: Any area disturbed shall be grassed. The area for all trenched has been included in the quantity.

Question 41: On the drawings - Sheet 9 - Detail 2 - This depicts a 3” wellhead. Is the contractor to price 2” or 3” wellheads for alternate bid item No. 12? Also, the wellhead details on most all of the drawings seem to be an ORP215M model wellhead - In the Technical Specifications - section 2.07 - Reads “wellheads shall be QED precision AccuFlow wellheads.” Which model wellhead shall the contractor price per Bid item No. 12?

Response: The wellheads will be the 2” ORP215M models. This has been corrected in the attached drawing Set.

Question 42: In the technical specifications - The measurement of payment description for Line item #25 & 49 are the same or similar in the materials requested to be allocated to these items. Is Line No. 25 to be for install only, and Line No. 49 to be for supply only? What is the difference between alternate add price Line Item No. 13 & Base Bid Item No. 49?

Response: Item #25’s pumps are to be installed and Item 49’s pumps are to only be supplied. Alternate add price Line Item No. 13 and Base Bid Item No. 49 are the same, is addressed in the Alternate Add Price Schedule below.

Question 43: On the bid sheet - Bid Item No 26 - Nylon Tubing and Pump Support Rope are listed as a material provided by the County. The measurement of payment description states it is supplied on a unit basis. What is the difference between this item and alternate item No. 14?

Response: Base Bid Item 26 and Alternate Add Item 14 are the same, is addressed in the Alternate Add Price Schedule below.

Question 44: On the drawings - Sheet 4 - There are (4) tie-ins to the existing blind flanges off the 26” header. Where shall the contractor place costs for these tie-ins on the bid sheet? What size are blind flanges along this header?

Response: As per the revised drawings one of the 4 tie-ins shall be to an 8-inch existing Access Riser. The blind other flanges are 8”. A line item have been added to the new ITB Bid form for the 8-inch tie-ins.

Question 45: On the drawings - Sheet 3 & 4 - Note 18 - Will this liner flap be disturbed for all tie-ins to the 26” and 24” header? Will the contractor be allowed to utilize the 40-mil LLDPE to repair penetrations into this flap? Or is 60-mil HDPE desired?

Response: There is available 60-mil HDPE for the disturbed liner flap on site that can be used by the contractor.

Question 46: Is the liner flap welded to the base liner at the anchor trench?

Response: Yes.

Question 47: Will the 6” line currently connected to the farthest north blind flange on sheet 4 be abandoned after the contractor disconnects and ties in the new 8” line heading towards GEW-N14A?

Response: The end of the 6” will need to be cut and capped only if it is impeding construction in the field.

Question 48: Does the site have survey control points?

Response: Yes.

Question 49: Please let us know whether or not this material has already been purchased. If the material has not been purchased, please let us know whether or not there is a special form to submit our proposal on, so; we can be considered as a potential supplier? Or, can you entertain our formal quote form?

Response: No, the materials have not already been purchased, in this solicitation, there are two (2) price schedules: Base Bid and Alternate Bid. The Alternate Bid price schedule is for the materials. In order to be considered for award of material prices submitted, you must provide prices for both Price Schedules.

Question 50: The well schedule has 1712 ft of 8” wells and 190 ft of 12” wells, adding up to the 1902 ft on the bid sheet. Is the price for 12” wells supposed to be an adder?

Response: Please see response to Question 7.

Question 51: The well detail calls for an 8”x12” PVC reducer. Should this be PVC?

Response: This shall be HDPE. Please see response to Question 10.

Question 52: Does the site have any preferred vendors for surveying, seeding, or sodding? Or can a list of vendors who have worked at the site be provided?

Response: No. DeKalb County does not have any preferred vendors for these services. for a list of previous vendors on prior projects, please submit an open records request (ORR). The link to our County website can be found [HERE](#).

Question 53: What are the sizes and materials of the wells being abandoned?

Response: Please see response to Question 15.

Question 54: Item 16 on the bid sheet calls for 4” Isolation valves. All the forcemain on the drawings is 3”. Should 4”x3” reducers be used to construct the detail as shown? Or should it be switched to 3”?

Response: This is supposed to be a 3” isolation valve and that is updated in the bid form.

Question 55: Same question for item 19

Response: This is supposed to be a 3” cleanout and that is updated in the bid form.

Question 56: For item 22, is just the wellhead considered major material? Or does it include the orifice plate kits, banding kits, and flex hose?

Response: Wellhead refers to wellhead and orifice plate kit. For the rest refer to response to question 82.

Question 57: Will new 24” tees be required for each of the tie-ins? Or can some be branch saddles?

Response: All tees for this project shall need to be full sized molded tees.

Question 58: For the 10” tie in, is the contractor supposed to tee into the riser?

Response: The contractor is supposed to use the stub up to locate and excavate to the 10” line and tie into the lateral.

Question 59: Item 54 – I count 5 of these along the outer perimeter

Response: This has been corrected in the REVISED Bid Form, which can be found below.

Question 60: There are 4 tie-ins to the 26” header on sheet 4 that are not on the bid sheet.

Response: Please see response to Question 44.

Question 61: There are a few spots where the notes and drawings don't match – e.g. notes 19 and 20 are referred to on the drawings but are not listed.

Response: See response to question 14. The “See note 20” refers to note 18.

Question 62: What are the contractor operating hours? Can the contractor work on weekends?

Response: The Contractor can work on Mondays- Saturdays during the landfill operating hours. Yes, The contractor has the ability to work weekends while landfill staff in on the premises. All work should be performed while CQA is onsite and present. No open trenches or spoil piles will be left overnight without proper cover material in place; all excavated waste should be hauled to the working face each day.

Question 63: Is water available on-site? and if so, at no cost to contractor?

Response: Please see response to Question 17.

Question 64: Please provide notes 19 and 20 on drawing 3 and 4 (they are missing).

Response: See response to question 14. The “See note 20” refers to note 18.

Question 65: What are we connecting to at GEW-N68?

Response: Please see response to Question 26.

Question 66: How is the 12" connecting to Ex. 10" Stub-Up?

Response: Please see response to Question 58.

Question 67: Drawing 4 shows several flanged connections. What size are the ex. flanges?

Response: Please see response to Question 44.

Question 68: Please clarify the connections involved with HCN3?

Response: Please see response to Question 22.

Question 69: Does excavated waste need to be scaled, or can it be hauled directly to work face for disposal? Does excavated waste have to be tracked? If so, how (by load)?

Response: No, excavated waste can be hauled directly to the working face. The excavated waste will have to be tracked by load.

Question 70: Wells to be abandoned PVC or HDPE and what size?

Response: Please see response to Question 15.

Question 71: Bid Item 36- 8" Header Valves shows quantity 4, but can only find 3. Please verify.

Response: This has been corrected in the REVISED Bid Form, which can be found below.

Question 72: Will the contractor be required to import any of the following materials (pipe bedding, clean backfill for trenches, or topsoil) or are they all provided by Owner and located on-site?

Response: Please see response to Questions 3 and 4.

Question 73: Will topsoil be placed in 4" or 6" thickness? Specs conflict.

Response: Soil backfill in maximum 6-inch lifts while backfilling trenches. 4 inches of topsoil shall be required for restoration and reestablishment of vegetation.

Question 74: Is density or compaction testing required during backfill placement?

Response: No.

Question 75: Is hardware stainless steel or hot dipped galvanized? Specs conflict.

Response: Please see response to Question 19.

Question 76: Bid Item 4 - Please check the estimated quantity. I believe the current drilling total 1902 VF includes the wells for Bid Item 5.

Response: Please see response to Question 7.

Question 77: Bid Item 17- Please check the bid quantity. I count 9 Air Line Valves (assume some of these are Bid Item 54 -3" Air Valves)?

Response: 4 2" Air Isolation valves on proposed air lines and 5 3" Air Isolation valves on the perimeter air line. The quantity has been corrected in the REVISED Bid Form, which can be found below.

Question 78: Bid Item 54- Where are the 3" Air valves located? Is quantity 4 correct?

Response: Please see response to Questions 39 and 59.

Question 79: Is the existing perimeter airline 2" or 3" diameter pipe?

Response: Please see response to Question 7.

Question 80: Bid Item 19- Should the Liquid Conveyance Clean-out be 3" or 4" diameter?

Response: Please see response to Question 55.

Question 81: Are wellheads QED Accuflow or QED ORP orifice plate wellheads?

Response: Please see response to Question 41.

Question 82: Bid Item 22- Please specify what components of the wellhead the contractor is required to purchase (if any). Measurement and payment section identifies the wellhead, QED caps, flex-hose, steel clamps, fittings, sample ports/covers, high liquid level indicator, and HDPE reducers. However, Section 01 10 00 Part 1.08 does not specify what the County intends to purchase.

Response: **Contractor to include the pricing for above mentioned items and any items necessary to complete installation for the wellheads under Bid Item 22.**

Question 83: Is Bid Item 22 an install only item (assume the County is providing all of the required parts)? Please clarify.

Response: **County will only be purchasing wellheads only under Alternate Bid Item 12, contractor to include pricing for additional materials i.e. frengo, clamps etc. to complete installation as shown in the Drawings and the Specs.**

Question 84: Same question above regarding Bid Item 25. It is not clear what parts (if any) the contractor is required to purchase vs. County purchase.

Response: **County intends to purchase pumps under Alternate Bid Item 13 and Nylon Tubing and Pump Support Rope for Gas Well Pumps under Alternate Bid Item 14. Any associated parts required to complete the installation as per the Drawings and Specs under Bid Item 25 are to be included by the contractor.**

Question 85: Bid Item 29- Is the contractor required to seed & install erosion control matting on all disturbed areas or just seed the disturbed areas? If matting is required, what are the specifications for the matting?

Response: **Matting shall follow the specification as required by the Manual For Erosion and Sediment Control in Georgia 2016 edition for Slope Stabilization.**

- Question 86:** Can you please add a Bid Item for 3" FM (Separate trench)? There is approximately 180 LF.
- Response:** **Added Bid Item 013.a; in the REVISED Bid Form, which can be found below.**
- Question 87:** Bid Item 26 - GCCS Signs. Please clarify what parts the contractor is required to supply (if any).
- Response:** **All GCCS signs are sticker labels with the following spec: White Vinyl lettering 2-inch tall.**
- Question 88:** Can the bid date be extended due to the number of questions and time needed to make necessary changes?
- Response:** **Yes. In lieu of the number of questions submitted, and responses provided, the Bid Due Date has been extended to Tuesday, March 15, 2022 by 03:00 pm**
- Question 89:** If the Owner intends to purchase the 100% of the pumps & parts in the Alternate Add Price schedule (Items 13 & 14), is it safe to assume Bid Item -25 Gas Extraction Well Pumps Installed is install only?
- Response:** **The owner intends to purchase major parts only i.e. pipes, pumps and wellheads. All corresponding parts required to complete the installation as shown in the drawings are Contractor's responsibility to purchase i.e. pump fittings, discharge hoses, frencos for wellheads and associated items.**
- Question 90:** Bid Item 49-Gas Extraction Well Pumps Supplied - assume this is for contractor to supply one complete pump kit? Unsure if this is to include tubing, cable, well seal cap, discharge manifold, air manifold, etc. Please clarify.

Response: **The owner intends to purchase just the pumps under Bid item 49, all associated well seal caps, discharge manifold and air manifold shall be included under Bid Item 25. The owner intends to purchase 2,500LF of Nylon tubing and Pump support ropes under Alternate Bid Item 26.**

Question 91: How will P&P bonding and bid security be handled for the Alternate ADD Price Schedule? Does the contractor include and spread these costs to all of the bid items on this form or OMIT?

Response: **Bid Bond = Base Bid Price**
P&P Bonds = Full Amount of Award

Question 92: Can you please provide the contractor with more information on what is to be included for each of the following Alternate ADD Price Schedule Bid Items (Bid Item 12, 13, 14, & 15). Can you provide a detailed breakdown of all parts to be included within each of these Bid Items?

Response: **The owner intends to purchase only pipes under the Alternate Bid Items corresponding to Bid Items 12, 13, 14; any additional materials/fittings required under Bid Item 12, 13, 14 & 15 i.e. tees, wyes, sweeps, valve stems, flange connections for isolation valves etc. shall be included in the installation pricing of the respective line items.**

Question 93: Can you please provide manufacturer/spec information on the GCCS signs, supports, and hardware?

Response: **All GCCS signs are sticker labels with the following spec: White Vinyl lettering 2-inch tall.**

Question 94: Detail 2 on page 7 (Dewatering Extraction Well Detail) calls for a 12" HDPE to PVC flange connection but both sides of the flange are called out as PVC. Can you clarify if HDPE is needed and if so where it is needed on this detail?

Response: See Response to question 10.

Question 95: What is included in Add Item 12 LFG Wellheads?

Response: See Response to question 82.

Question 96: Technical Specifications state to use Asahi-American Type 75 series for 18" valves, what do we use for 8" valves? Section 33 51 20 Part 2.01 Section E.

Response: The Type 57 Asahi 8" butterfly valve can be used.

Question 97: On the remote wellhead detail it shows pipe going "to the tie in at the horizontal collector pipe". Where does the remote wellhead HCN-3 tie-into the existing horizontal collector pipe? Please provide clarification on how to tie-in the remote wellhead for HCN-3, is there a stub up currently installed at this location or will contractor need to excavate down and tie into the lateral piping of the horizontal collector? Also, what size is the Horizontal collector?

Response: See response to Question 22.

Question 98: Is the county providing the remote wellhead for HCN-3? Can you clarify that this remote wellhead is 3" and the other wellheads needed for this project are 2"?

Response: This shall be a 2" wellhead.

Question 99: 24" flange connection on page 3 says to see note 19. There is no note 19 on this page, can this note be provided? Is there an existing 24" tee and blind flange present at this location?

Response: See response to question 14. The existing tee is expected to have reducer to 6", no blind flange is available at this spot.

Question 100: Which 24" tie-in does note 17 refer to? Should the 6" be changed to 8" and or 12"? Is there currently a 24"x6" tee that needs removed at any of the 24" tie in locations?

Response: See response to question 14. The "See note 20" refers to note 18. Contractor shall tie-in to the existing 24" tee with reducers to 6" with a full sized 24" tee.

Question 101: Can the contractor use 24" electrofusion couplings for the 24" tie in located at N: 1332460.8 E: 2267982.6?

Response: Yes.

Question 102: Can you provide a detail for the 3-inch Air Release Valve in Dual Contained Liquid Conveyance Line in item 46?

Response: It shall be the same as the detail 5 on sheet 10 after a dual contained to single contained transition on the stub up.

Question 103: Can you provide a pipe support detail for the berm crossings?

Response: Pipe supports if needed may be a metal clamp anchored in a concrete base or 4x4 treated wooden posts anchored in the ground with minimum 6-inch separation from the top of the closure cap.

Question 104: Can you provide a detail for bid item 54? Can you confirm where there is 3" compressed air line? Can you clarify where these are being installed?

Response: Please see response to Question 39.

Question 105: Note 12 on Sheet 3 of the Bidding Drawings states “Contractor is to let CQA inspector take system pressure readings on vacuum stub-ups before the lateral is ran to the new or re-drilled well”. How much notification to the CQA inspector is required and how long will approval for contractor to proceed be given?

Response: **The contractor shall provide the notification at least 3 business days before the lateral is run. The approval will be given 1 business day before the lateral is run.**

Question 106: Does the contractor need to pay any Tipping fees for hauling excavated refuse to the landfill working face?

Response: **No. Will need to keep a log of the loads of waste hauled to the active area.**

Question 107: Is the proposed valve V-11 to be 8”?

Response: **Yes.**

Question 108: Is Note 18 on Sheet 3 referencing only AV-10 or are there additional valves that will need to be installed below an existing 60 Mil HDPE Geomembrane Liner? Does the site have 60Mil Liner available onsite to be used for these repairs or does the contractor need to provide the 60Mil liner in addition to the 40 LLDPE that is being purchased for the other pipe boots?

Response: **AV-9 to AV-13. Please see response Question 45.**

Question 109: There is a callout “See Note 18” North of GEW-N192R3 on Sheet 3 of the Bidding Drawings. Can you clarify how this pertains to the project scope? Is there liner material at this location of the landfill?

Response: **This note refers to the installation of AV-9, AV-10 and AV-11. See response to the Question 45.**

Question 110: Can you provide additional information on how the contractor is to make the 12” tie in at the 6”/24” flange on sheet 3?

Response: Please see Note 17 on Sheet 3.

Question 111: Detail 4 on sheet 7 for perforated pipe calls out for the material to be 8” HDPE SDR 11 pipe. However the well detail and Bid Schedule looks to reference all 8” SCH80 PVC pipe. Are the wells to be HDPE or PVC? Additionally, if ½” diameter perforations are not readily available, is it OK to use 5/8” diameter holes for the well perf pipe?

Response: Please see response to Question 6. 5/8” dia. Holes may be used.

Question 112: On the Dewatering pump detail, note 3 specifies to order 8” well seals and store onsite as needed. Can you confirm how many need to be ordered?

Response: Well seals for all wells, if any well seals are not used/previous ones reused, the seals shall be accounted for and stored onsite.

Question 113: On the Base Price Schedule, Item No. 16 calls for a 4” Liquid Conveyance Valve. Should this be 3”?

Response: Please see response to Question 54.

Question 114: On the Base Price Schedule, Item No. 19 calls for a 4” Liquid Conveyance Cleanout. Should this be 3”?

Response: Please see response to Question 55.

Question 115: What is the latest time that the contractor can bring excavated waste to the active work face M-F and Saturday?

Response: **The contractor will be allowed to haul excavated waste to the working face Mon – Fri 6:00am to 8:00pm, and Sat 8:00am to 3:30pm.**

Question 116: Can onsite soil be used for drill rig platform construction?

Response: **Yes.**

Question 117: Can you confirm no tie-in will be greater than 5’ deep?

Response: **Contractor shall assume tie-ins shall be upto 5 feet deep.**

Question 118: Section 3.05 of the Tech Specs requires 6 bags of bentonite per 6" lift. Just want to confirm this is not a typo and each well will require a total of 24 bags per 2’ plug.

Response: **6 bags per 6” lift equates to 24 bags for a 2’ plug.**

Question 119: Can you provide a detail for air/forcemain abandonment? How much bentonite will be needed per abandonment?

Response: **Air and forcemain shall be abandoned 2-feet below ground as per detail 7 on sheet 8. Air and Forcemain stub-ups that are a part of the cluster shall use bentonite as per the abandonment detail. Stand lone air and forcemain can be abandoned without bentonite.**

Question 120: The remote wellhead is not in the bid form, what item will this cost be associated with?

Response: **There remote wellhead for HCN3 is connecting the existing stub up to a new vacuum source close to proposed GEWN87. This will include creating a vacuum stub up and installing a wellhead for HCN3. 1 count of wellhead has been added to the line item 22 and any piping required has been accounted for in line item 10.**

Question 121: Note 19 and 20 are referenced in the site plan on sheet 3, can you provide note 19 and 20 for sheet 3?

Response: See response to question 14. The “See note 20” refers to note 18.

Question 122: Are the well labels separate from the GCCS signs? If so, can you provide a detail for the GCCS sign?

Response: All GCCS signs are sticker labels with the following spec: White Vinyl lettering 2-inch tall.

Question 123: On the drawings - Sheet 11 - The DC FM tie-in to riser A-1 - Is there electrical conduit ran in the same trench where to the existing dual contained piping is to be tied into?

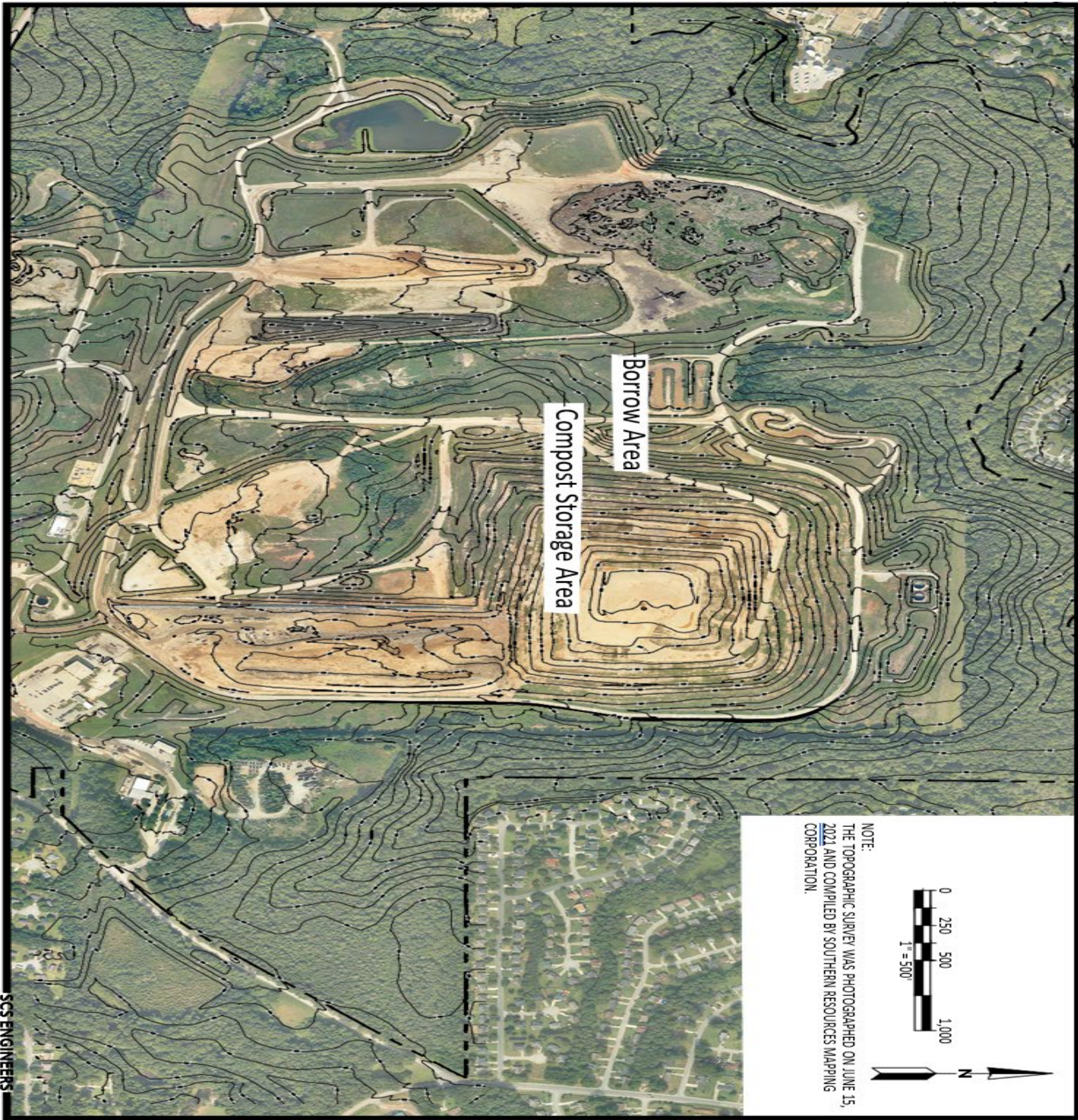
Response: The contractor shall locate any utilities prior to excavation.

Question 124: On the bid sheet - Line item # 12 - 4-inch HDPE SDR11 Liquid Conveyance Line in Common Trench - Shall the contractor bid this particular line item as if it will be a substitute for line item #13? (All fittings, reducers, HPDE to SS transitions, etc. needed for 7300 Feet of common trench scope)

Response: Line item 12 has been removed from the Bid form and Measurement and Payment Spec.

- B. The Construction Drawings have been **REVISED** and updated; it can be found [HERE](#).
- C. Technical Specifications, Section 01 20 00 – Measurement and Payment have been **REVISED** and updated, it can be found [HERE](#).
- D. The Overall Site Topo and Aerial figure has been added; it can be found below.
- E. The Alternate Add Price Schedule has been **REVISED** and updated; it can be found below.
- F. The Bidder's Base Price Schedule has been **REVISED** and updated; it can be found below.

OVERALL SITE TOPO AND AERIAL FIGURE



REVISED BIDDER'S BASE PRICE SCHEDULE as of 3/4/2022

***** REVISED BASE PRICE SCHEDULE AND ALTERNATE ADD MUST BE SUBMITTED IN A SEPARATE SEALED ENVELOPE OR BIDDER WILL BE DEEMED NON-RESPONSIVE AND WILL NOT BE CONSIDERED FOR AWARD*****

Item No.	Description	Unit	Estimated Qty.	Unit Price (\$)	Amount (\$)
001	Mobilization/Demobilization	LS	1	\$	\$
002	Project Survey	LS	1	\$	\$
003	Drilling Rig Platform	EA	33	\$	\$
004	36-inch Diameter Bore with 8-inch Diameter SCH 80 PVC Casing	VF	1,902	\$	\$
005	36-inch Diameter Bore with 12-inch Diameter SCH 80 PVC Casing	VF	200	\$	\$
006	Boring Refusal	VF	150	\$	\$
007	LFG Well Abandonment	EA	6	\$	\$
008	12-inch HDPE SDR 17 Pipe in LFG Header/Lateral Trench	LF	760	\$	\$
009	8-inch HDPE SDR 17 Pipe in LFG Lateral Trench	LF	2,550	\$	\$
010	6-inch HDPE SDR 17 Pipe in LFG Lateral Trench	LF	3,900	\$	\$
011	24-inch CMP Casing for Road Crossing	LF	180	\$	\$
012	Intentionally Left Blank				

***** REVISED BASE PRICE SCHEDULE AND ALTERNATE ADD MUST BE SUBMITTED IN A SEPARATE SEALED ENVELOPE OR BIDDER WILL BE DEEMED NON-RESPONSIVE AND WILL NOT BE CONSIDERED FOR AWARD*****

Item No.	Description	Unit	Estimated Qty.	Unit Price (\$)	Amount (\$)
013	3-inch HDPE SDR 11 Liquid Conveyance Line in Common Trench	LF	7,350	\$	\$
013 a	3-inch HDPE SDR 11 Liquid Conveyance Line in Separate Trench	LF	180	\$	\$
014	2-inch HDPE SDR 9 Air Supply Line	LF	7,350	\$	\$
015	12-inch Header Isolation Valve	EA	1	\$	\$
016	3-inch Liquid Conveyance Isolation Valve	EA	4	\$	\$
017	2-inch Air Line Isolation & Blowoff Valve	EA	4	\$	\$
018	2-inch Air Release Valve in Liquid Conveyance Line	EA	4	\$	\$
019	3-inch Liquid Conveyance Line Cleanout	EA	6	\$	\$
020	12-inch HDPE SDR 17 Header Access Riser	EA	1	\$	\$
021	Intentionally Left Blank				
022	LFG Wellheads	EA	57	\$	\$
023	3-inch Liquid Conveyance stub-up Pump Discharge Manifold	EA	73	\$	\$
024	2-inch Air Supply Stub-up Valve Fittings	EA	33	\$	\$

***** REVISED BASE PRICE SCHEDULE AND ALTERNATE ADD MUST BE SUBMITTED IN A SEPARATE SEALED ENVELOPE OR BIDDER WILL BE DEEMED NON-RESPONSIVE AND WILL NOT BE CONSIDERED FOR AWARD*****

Item No.	Description	Unit	Estimated Qty.	Unit Price (\$)	Amount (\$)
025	Gas Extraction Well Pumps Installed	EA	33	\$	\$
026	Intentionally Left Blank				
027	Intentionally Left Blank				
028	Sodding - Phase 1/2/2A Side Slopes	SY	20,000	\$	\$
029	Seeding - Phase 3 Seeding and Erosion Control Matting Side Slopes	SY	24,000	\$	\$
030	Tie-in to Existing 24-inch Header	EA	3	\$	\$
031	Tie-in to Existing 10-inch Lateral	EA	1	\$	\$
032	Tie-in to Existing 6-inch Lateral/Riser	EA	11	\$	\$
033	Tie-in to Existing 6-inch Lateral Riser at Well to be Abandoned	EA	4	\$	\$
034	Tie-in to Existing 2-inch Air Supply Line	EA	22	\$	\$
035	Tie-in to Existing 3" Liquid Conveyance Line	EA	22	\$	\$
036	8-inch Header Isolation Valve	EA	3	\$	\$
037	6-inch or 8-inch HDPE SDR 17 Landfill Gas Lateral Pipe in Deeper Trench of 5-8 ft	LF	100	\$	\$

***** REVISED BASE PRICE SCHEDULE AND ALTERNATE ADD MUST BE SUBMITTED IN A SEPARATE SEALED ENVELOPE OR BIDDER WILL BE DEEMED NON-RESPONSIVE AND WILL NOT BE CONSIDERED FOR AWARD*****

Item No.	Description	Unit	Estimated Qty.	Unit Price (\$)	Amount (\$)
038	3-inch HDPE SDR 11 x 6-inch SDR 17 Dual Contained Liquid Conveyance Line	LF	5,900	\$	\$
039	2-inch Air Line Abandonment	EA	18	\$	\$
040	3-inch Liquid Conveyance Line Abandonment	EA	18	\$	\$
041	6-inch Lateral Abandonment	EA	6	\$	\$
042	6-inch Lateral Riser Abandonment	EA	12	\$	\$
043	40-mil LLDPE Geomembrane Textured Liner Flap with Neoprene Gasket	EA	60	\$	\$
044	3-inch HDPE SDR 11 x 6-inch SDR 17 Dual Contained Liquid Conveyance Line Cleanout	EA	5	\$	\$
045	3-inch Liquid Conveyance Line Isolation Valve with Vault Box	EA	3	\$	\$
046	2-inch Air Release Valve in Dual Contained Liquid Conveyance Line	EA	4	\$	\$
047	Tie-in to Existing 6-inch x 3-inch Liquid Conveyance HDPE Line	EA	2	\$	\$
048	12-inch CMP/Corrugated Casing for Berm crossing	LF	600	\$	\$
049	Intentionally Left Blank				
050	6-inch x 3-inch Dual Contained Tee in Liquid Conveyance Stub-up for Future Tie-in	EA	10	\$	\$

***** REVISED BASE PRICE SCHEDULE AND ALTERNATE ADD MUST BE SUBMITTED IN A SEPARATE SEALED ENVELOPE OR BIDDER WILL BE DEEMED NON-RESPONSIVE AND WILL NOT BE CONSIDERED FOR AWARD*****

Item No.	Description	Unit	Estimated Qty.	Unit Price (\$)	Amount (\$)
051	Hourly Rate for Well Drilling	HR	10	\$	\$
052	Standby Time During Drilling Work	HR	10	\$	\$
053	Standby Time	HR	10	\$	\$
054	3" Air Isolation Valves	EA	5	\$	\$
055	8" Tie-ins Along the Header	EA	4	\$	\$
SUBTOTAL BID COST					\$
Flare Yard Upgrades and Modification					\$ 200,000.00
Authorized Contingency					\$ 400,000.00
TOTAL BID COST					\$

LEGEND

EA – each
 VF - vertical foot
 LS - lump sum
 LF - linear foot
 HR – Hour

REVISED ALTERNATE ADD PRICE SCHEDULE as of 3/4/2022

***** REVISED BASE PRICE SCHEDULE AND ALTERNATE ADD MUST BE SUBMITTED IN A SEPARATE SEALED ENVELOPE OR BIDDER WILL BE DEEMED NON-RESPONSIVE AND WILL NOT BE CONSIDERED FOR AWARD*****

Item No.	Associated Item No. on Bidder's Base Price Schedule	Description	Unit	Estimated Qty.	Unit Price (\$)	Amount (\$)
1	4	8-inch Diameter SCH 80 PVC Pipe – perforated	VF	1,300	\$	\$
2	4	8-inch Diameter SCH 80 PVC Pipe – solid	VF	540	\$	\$
3	5	12-inch Diameter SCH 80 PVC Pipe – perforated	VF	160	\$	\$
4	5	12-inch Diameter SCH 80 PVC Pipe – solid	VF	60	\$	\$
5	8	12-inch HDPE SDR 17 Pipe	LF	780	\$	\$
6	9	8-inch HDPE SDR 17 Pipe	LF	2,600	\$	\$
7	10	6-inch HDPE SDR 17 Pipe	LF	4,100	\$	\$
8	11	24-inch CMP Casing for Road Crossing	LF	200	\$	\$
9		Intentionally Left Blank				
10	13	3-inch HDPE SDR 11 Pipe	LF	8,000	\$	\$
11	14	2-inch HDPE SDR 9 Pipe	LF	8,000	\$	\$

***** REVISED BASE PRICE SCHEDULE AND ALTERNATE ADD MUST BE SUBMITTED IN A SEPARATE SEALED ENVELOPE OR BIDDER WILL BE DEEMED NON-RESPONSIVE AND WILL NOT BE CONSIDERED FOR AWARD*****

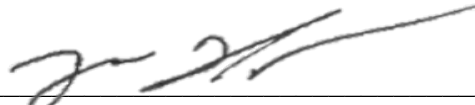
Item No.	Associated Item No. on Bidder's Base Price Schedule	Description	Unit	Estimated Qty.	Unit Price (\$)	Amount (\$)
12	22	LFG Wellheads	EA	57	\$	\$
13	25	Gas Extraction Well Pumps	EA	60	\$	\$
14		Nylon Tubing and Pump Support Rope for Gas Well Pumps	LF	2,500	\$	\$
15		GCCS Sign	EA	68	\$	\$
16	38	3-inch HDPE SDR 11 x 6-inch SDR 17 Dual Contained Pipe	LF	6,300	\$	\$
17	43	40-mil LLDPE Geomembrane Textured Liner	Roll	1	\$	\$
18	48	12-inch CMP/Corrugated Casing for Berm crossing	LF	650	\$	\$
TOTAL BID COST					\$	

LEGEND

EA – each
 VF - vertical foot
 LS - lump sum
 LF - linear foot
 HR – Hour

It is the responsibility of each bidder to ensure all awareness of all addenda issued under this ITB. Please sign and return this addendum with your bid submittal. You may contact Jovan Hooper, Senior Procurement Agent at jhooper@dekalbcountyga.gov before the bids are due to confirm the number of addenda issued.

All other conditions remain in full force and effect.



Jovan Hooper, CPP
Senior Procurement Agent
Department of Purchasing and Contracting

ACKNOWLEDGMENT

Date: _____

The above Addendum is hereby acknowledged:

(NAME OF BIDDER)

(Signature)

(Title)