

DeKalb Sustainable Neighborhoods Initiative

Information Session

April 19, 2012

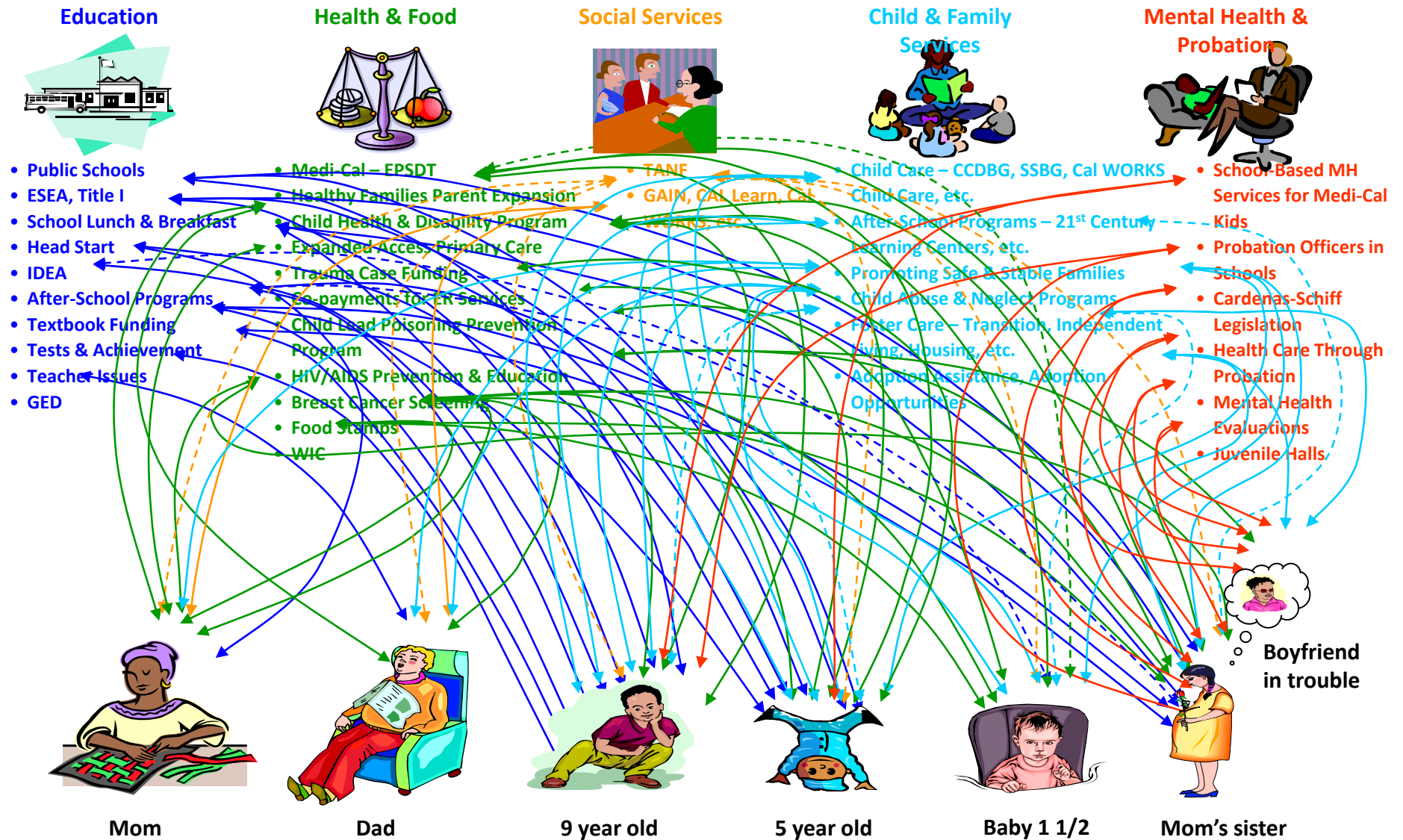
- **Old Paradigm**

- Multiplicity of programs
- Narrow focus on a single policy domain
- Public/nonprofit emphasis
- Grant-driven
- Systems focus
- Deficit model



Business as Usual

... See a Problem, Convene a Task Force, Create a Program...
Has Created a Tangle of Inefficiencies



Source: Dunkle, M. (2002) *Understanding LA Systems that Affect Families*. Los Angeles, CA: George Washington University and the LA County Children's Planning Council

© 2008-2010 The Forum for Youth Investment. Ready by 21 and the Ready by 21 Logo are registered trademarks of the Forum for Youth Investment.

- **New Paradigm**

- Comprehensive
- Collaborative
- Cross-Sector
- Community-Based
- Strategic
- Asset-Based

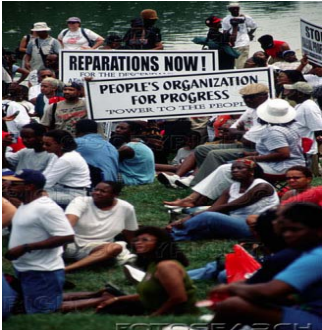
Community building is a process and a product



New Communities Program

http://www.youtube.com/watch?v=gH2Ca-23Q6A&feature=plcp&context=C281c8UDOEGsToPDskIKvW_gPvLNnaNkTQrpvLGx





New Communities Program

Community-Driven Planning

1. Specific and responsive community Quality-of-Life Plans
2. Intensive one-one organizing for sustained engagement

Community-Based Program Delivery

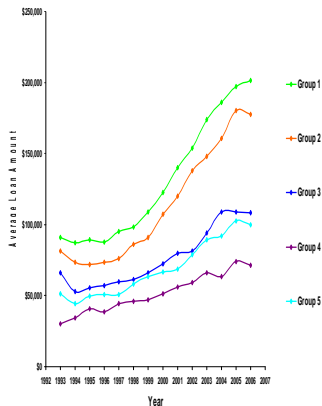
3. Lead agency to engage, deliver programs, organize partnership
4. Community partners to diversify constituencies, programs

Systemic Support

5. Civic partnerships across community domains
6. Robust intermediation across domains and levels

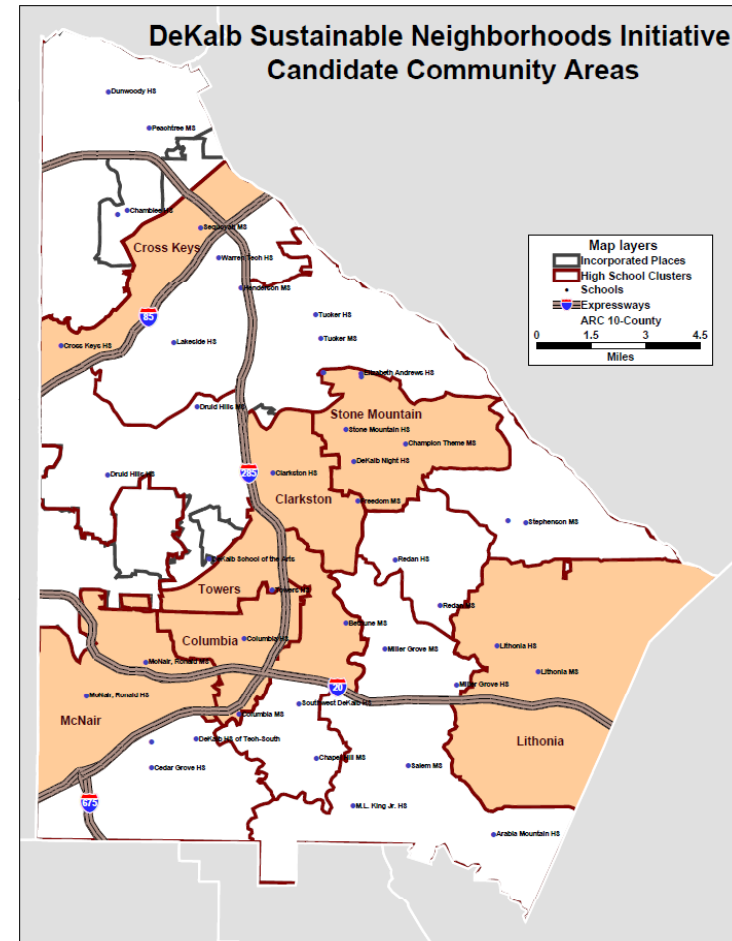
Regime of Accountability

7. Layered scheme of monitoring and sanction
8. Measuring progress & impact at the community level.



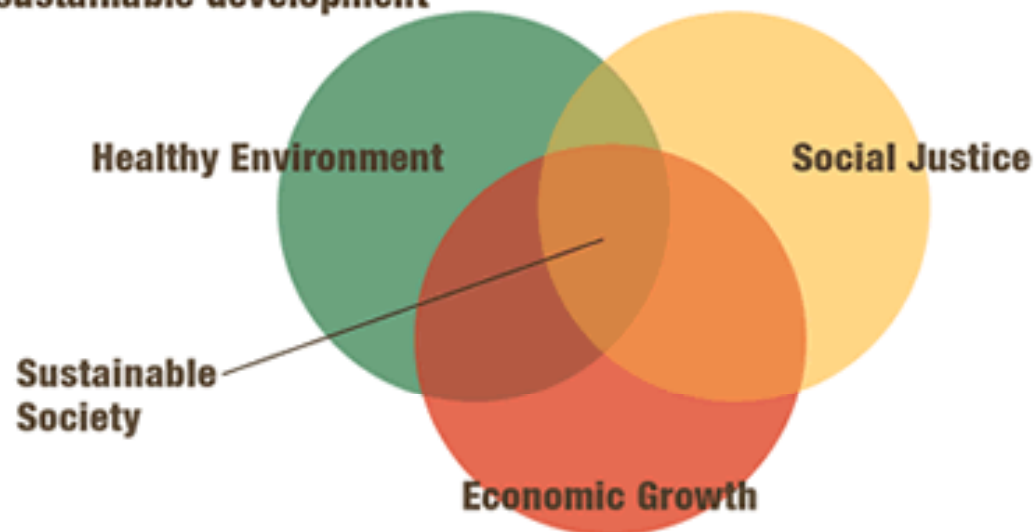
DeKalb Sustainable Neighborhoods Initiative

- DeKalb County Human and Community Development
- County Departments
- County Agencies
- Other public, private, nonprofit, philanthropic, community, and higher education partners



The Many Meanings of Sustainability

The three components
of sustainable development



Sustainable
Society

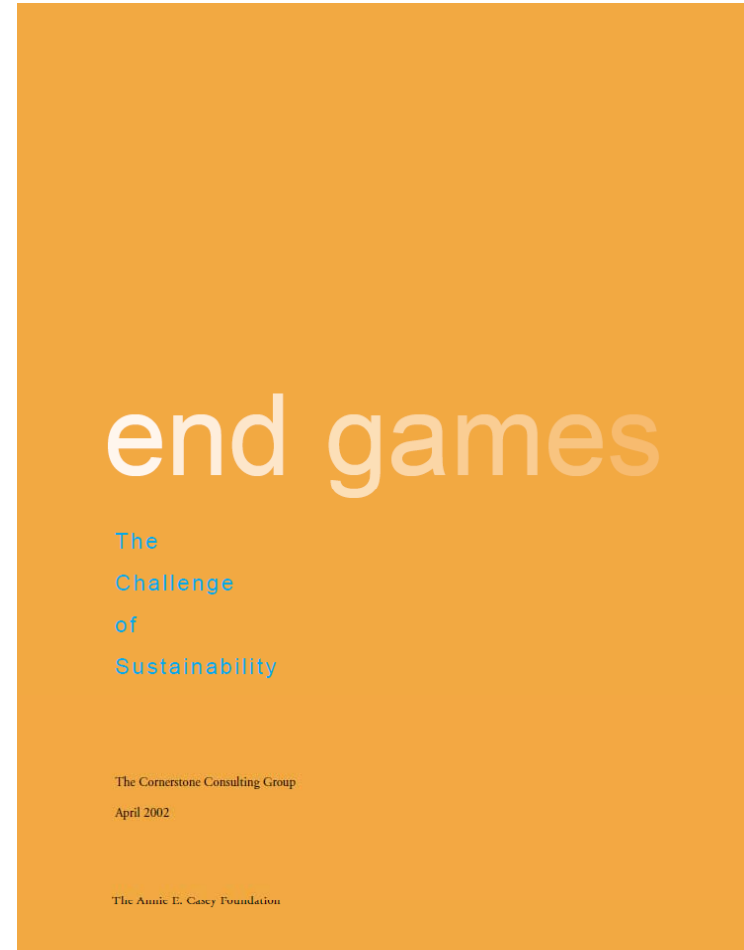
Environment

Economics

Equity

The Challenge of Sustainability

- What is it really, that we hope to sustain. Is it the survival of:
- The *initiative*?
- The *organization* that has led the initiative?
- The survival of core *ideas*?
- *Relationships*?
- The *sense of community direction*
- Is all of it important?



Letter of Intent to Participate

- Neighborhood Engagement Process
- Most Pressing Neighborhood Issues
- Early Action Project
- Steering Committee
- Neighborhood Identity

Neighborhood Engagement Process

- Process used to identify and engage neighborhood stakeholders
- Why neighborhood is motivated to participate
- Commitment to be actively engaged over the next 3-5 years



Most Pressing Neighborhood Issues

- Three most pressing issues or concerns you would most likely want to address in your Quality of Life Plan and how those issues were chosen



Early Action Project

- Process used to select an initial Early Action Project and how the project will further your efforts to create a Quality of Life Plan



Steering Committee

- Process used to identify and create a broad group of neighborhood stakeholders to serve as the steering committee to guide the neighborhood through the Quality of Life Plan.



Neighborhood Identity

- A map indicating the boundaries to be included in the development of your Quality of Life Plan

