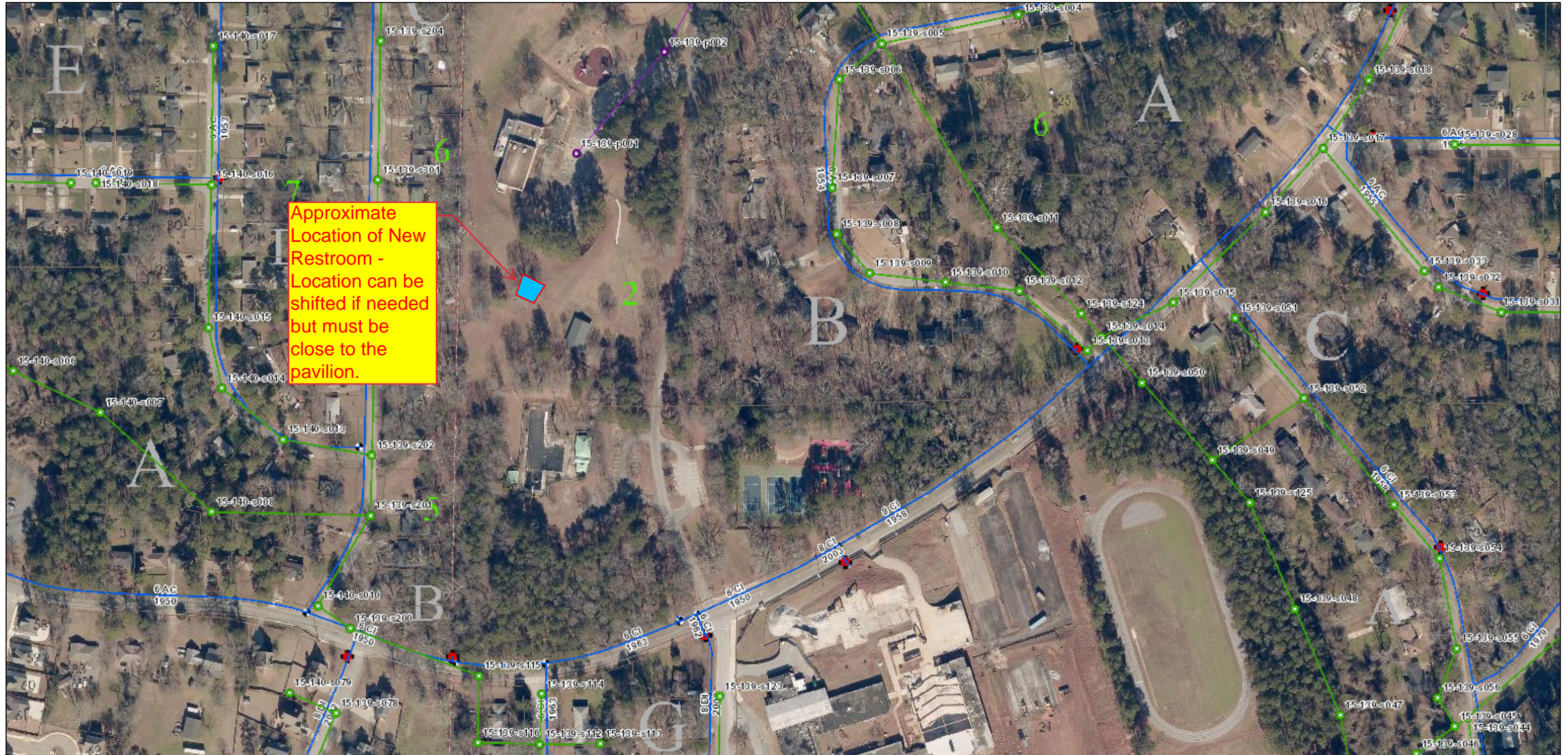


# N.H. Scott Park

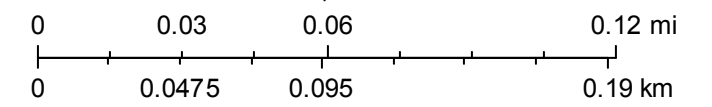


Approximate Location of New Restroom - Location can be shifted if needed but must be close to the pavilion.

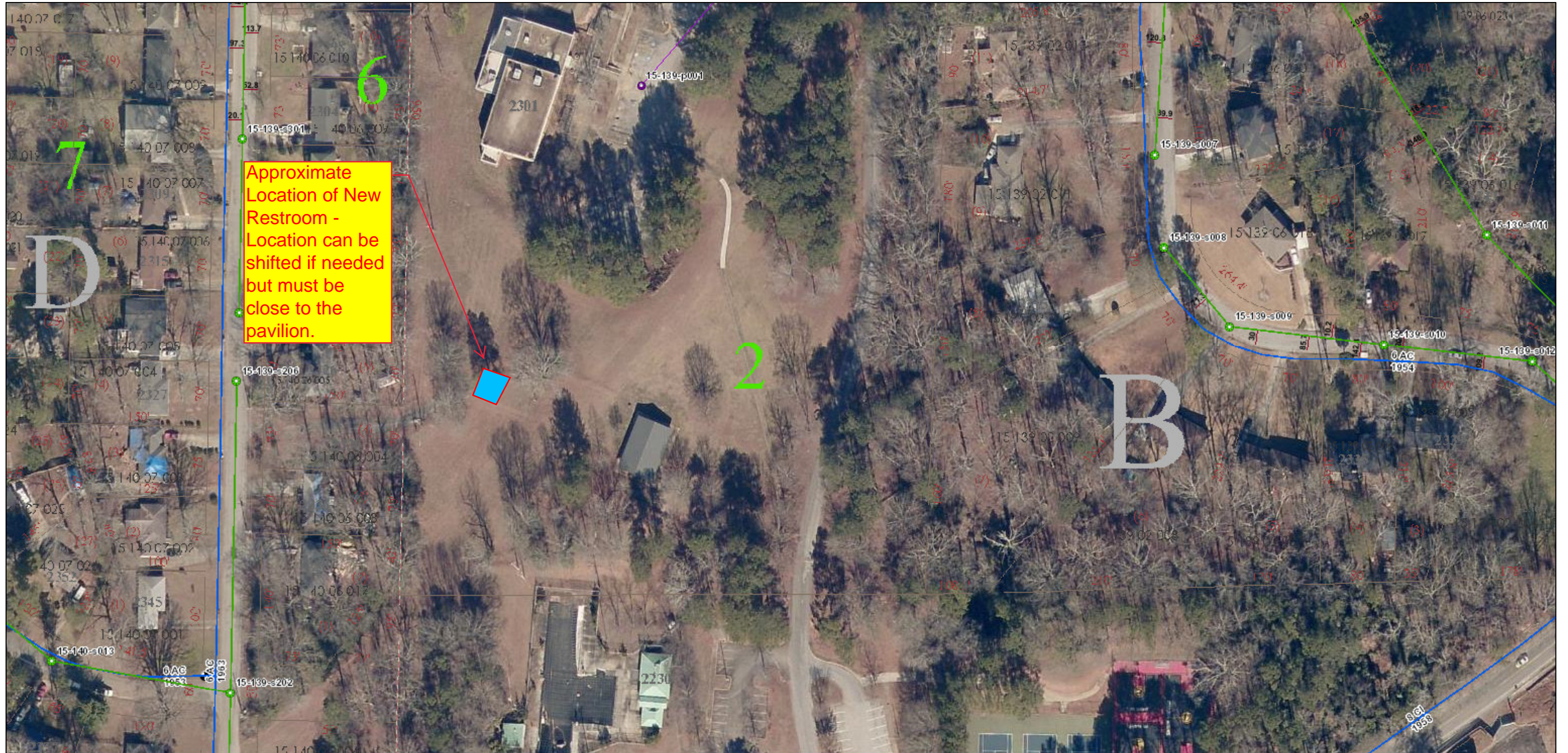
November 6, 2018

1:2,518

- |                      |               |   |  |           |
|----------------------|---------------|---|--|-----------|
| 11-251-POLEBRIDGE    | Private       | LIFT STATIONS                               | VALVE  | LATERALS  |
| 15-030-SNAPPINGER    | DEKALB        | Air Valves                                  | STORAGE  | District  |
| INTRENCHMENT-ATLANTA | ATLANTA       | SEWER FORCE MAINS                           | PUMP   | Land_Lot  |
| Atlanta              | NOT IN COUNTY | FlowArrows                                  | 16; 18; 20; 24; 30; 36; 42; 48; 54; 60; 72; 80; 96 | TaxParcel |
| DeKalb               | PRIVATE       | .75; 1; 1.5; 10; 12; 14; 2; 2.5; 3; 4; 6; 8 | SOURCE   |           |
| Not in County        | 16"-72"       | HYDRANT                                     | TREATMENT PLANT                                    |           |



# N.H. Scott Park



Approximate Location of New Restroom - Location can be shifted if needed but must be close to the pavilion.

November 6, 2018

1:1,250

- |                      |               |   |  |           |
|----------------------|---------------|---|--|-----------|
| 11-251-POLEBRIDGE    | Private       | LIFT STATIONS                               | VALVE  | LATERALS  |
| 15-030-SNAPPINGER    | DEKALB        | Air Valves                                  | STORAGE  | District  |
| INTRENCHMENT-ATLANTA | ATLANTA       | SEWER FORCE MAINS                           | PUMP   | Land_Lot  |
| Atlanta              | NOT IN COUNTY | FlowArrows                                  | 16; 18; 20; 24; 30; 36; 42; 48; 54; 60; 72; 80; 96 | Address   |
| DeKalb               | PRIVATE       | .75; 1; 1.5; 10; 12; 14; 2; 2.5; 3; 4; 6; 8 | SOURCE   | TaxParcel |
| Not in County        | 16"-72"       | HYDRANT                                     | TREATMENT PLANT                                    |           |

