

YARD TRIMMINGS

Yard trimmings include grass clippings, leaves, twigs, branches, limbs, tree parts, shrubbery, vines, garden plants and other naturally occurring vegetative matter. All yard trimmings must be properly prepared for collection. Approved yard trimmings containers must be placed curbside by 7 a.m. and removed by 7 p.m. on residents' scheduled collection day.

ACCEPTABLE CONTAINERS

- Durable metal containers with two handles (20- to 40-gallon capacity)
- Durable plastic containers with two durable handles (20- to 40-gallon capacity)
- Biodegradable paper bags (no plastic bags)

COLLECTION PROCEDURES

- Biodegradable bags must be folded at the top to minimize rain deterioration
- Branches and limbs must be trimmed of twigs, vines & leaves
- Twigs, vines and leaves must be placed in an approved container
- **Tree limbs must be bundled and tied**, and should not exceed four feet in length
- Items must be stacked neatly at the curb
- Tree parts (each piece) must not exceed 50 lbs.
- Containers or bags should not contain dirt, or will require a special collection fee

Large piles of yard trimmings not meeting the above restrictions can be scheduled for special collection with appropriate prepayment fees. See **Special Collection Procedures** on our website.

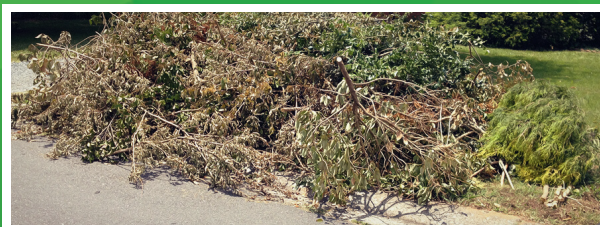
Tree limbs cut by professional or hired contractors and left at the curb for collection will incur a special collection fee.

PROPER PROCEDURE



(properly prepared yard trimmings)

SPECIAL COLLECTIONS fee applies



(improperly prepared yard trimmings)

SANITATION DIVISION MISSION STATEMENT

To provide an efficient, cost-effective and sustainable integrated solid waste management program for residents and businesses within the Sanitation Division service area, with a sustained focus on customer service excellence.

RECYCLING PROGRAMS

RESIDENTIAL SINGLE-STREAM RECYCLING

The residential curbside single-stream recycling program is a free subscription service offered to county residents, and is a critical component of the county's environmental stewardship efforts. Currently, over 94,000 households participate in the program. For more information and to subscribe, visit www.dekalbsanitation.com.

GLASS RECYCLING

The placement of glass in residents' curbside single-stream recycling is no longer permitted. However, residents are encouraged to continue recycling glass. Several large volume county-operated glass recycling drop-off containers are located throughout the County, and are available for public use. This program provides county residents with an alternative to placing glass in curbside garbage. This preserves the integrity of recycled glass, making it a more marketable and valuable resource. Visit www.dekalbsanitation.com for more information, including a listing of glass recycling drop-off locations.

E-RECYCLING

Electronics recycling, or e-recycling, is a term used for recycling electronics that have essentially reached the end of their useful life. The County's goal is to promote the recovery, reuse and recycling of obsolete electronic equipment, while diverting some electronics from the Seminole Road Landfill. Residents can drop off approved e-recycling items at the County's Seminole Road Landfill, 4203 CleveMont Road, Ellenwood, GA 30294. Visit www.dekalbsanitation.com for more information.

SHOE, CLOTHING AND TOY RECYCLING

The shoe, clothing and toy recycling program, a partnership with American Textile Recycling Service (ATRS) - Atlanta branch, benefits a local nonprofit organization - Humane Society of Northeast Georgia - providing much-needed resources to those who do not have access to, or can't afford these items. Visit www.dekalbsanitation.com for more information.

DeKalb County Sanitation Division
Administrative Office
3720 Leroy Scott Drive
Decatur, GA 30032
404.294.2900

sanitation@dekalbcountyga.gov
www.dekalbsanitation.com
@DKalbsanitation



Printed on recycled paper

RESIDENTIAL COLLECTION PROCEDURES

DEKALB COUNTY SANITATION DIVISION



Sanitation Division Administration Building



Sanitation Division Public CNG Fueling Station



Sanitation Division Residential Rear-loader Truck



BULKY ITEMS

Bulky items include large trash items that cannot fit in garbage roll carts. Approved bulky items are collected by special collection vehicles, and are included in residential annual sanitation assessment fees.

These items must be placed neatly at the curb without blocking mailboxes, driveways, sidewalks, drainage systems, roadways and utilities. Residents are encouraged to report bulky items via telephone (404) 294-2900 or email sanitation@dekalbcountyga.gov as soon as the items are properly placed at the curb for collection.

ACCEPTABLE ITEMS

Furniture and other large items such as:

- Chairs and tables
- Couches, loveseats and futons
- Mattress and box spring
- Lawn furniture and lawn mowers (gas and oil must be removed prior to placing at the curb)
- Grills (NO PROPANE TANKS)
- Microwave ovens
- Toys, bicycles and playground equipment
- Hand-held tools and accessories
- Toilets
- Televisions

WHITE GOODS

- Stoves and water heaters
- Refrigerators & freezers (contents and doors/lids must be secured or removed on all items prior to placing at the curb)

SPECIAL COLLECTIONS (fee required)

- Dead domestic animals
- Automobile tires (maximum of four - no commercial tires)
- Construction, demolition and remodeling materials including carpet, fencing, decking, etc. (roll-off containers available)
- Trees and large volumes of improperly prepared yard trimmings
- Tree limbs cut by professional or hired contractors

UNACCEPTABLE ITEMS

- Batteries: large-sized alkaline batteries and wet cell/lead acid batteries, such as the kind found in cars, trucks and boats
- Hazardous materials of any kind
- Waste in nonstandard county-provided container

CURBSIDE RECYCLING

The curbside single-stream recycling program is a voluntary subscription-based program that allows the commingling of recyclable items in county-provided recycling roll carts.

Recycling subscribers can obtain either a standard complimentary 35-gallon recycling roll cart, or upgrade to a 65-gallon recycling roll cart for a one-time \$15 prepaid fee. To subscribe, please submit an application via the online portal, email, mail or in person at the Sanitation Division's administrative office. Once an application is received and processed, residents will receive their recycling roll cart within 10 business days. Please visit www.dekalbsanitation.com for more information, including roll cart upgrade prepayment fee instructions.

ACCEPTABLE ITEMS

- All steel, tin and aluminum cans
- Newspapers, magazines, phone books and catalogs
- Small and large cardboard boxes (flattened); no packing materials
- Cereal and pantry paper boxes
- All types of paper, including copy and wrapping paper
- Frozen food containers (remove food liners & foil)
- Tissue and paper towel cylinder cores (no tissue or paper towels)
- Coated paper inserts
- Books, circulars, brochures, manila folders
- Envelopes, junk mail (shredded paper must be in transparent bags, and tied prior to placing at curb)
- PETE, NPDE, PV, LDPE, PP, PS and plastics 1-7 that held food and beverage

UNACCEPTABLE ITEMS

- Paper towels, tissue, paper plates and cups
- Waxed paper, cellophane paper or plastic wrap
- Aluminum or tin foil
- Foam rubber material or packing material
- Plastic grocery or department store bags
- Dry cleaning bags; paper slips
- Cereal box liners, frozen food box liners and foil
- Ceramic or aerosol containers
- Pane glass windows or mirrors
- Pesticides and herbicides
- Petroleum or oil
- String, twine or strapping material
- Polystyrene cups and to go trays
- All glass containers that held food and beverage (please use glass recycling drop-off containers)

HOUSEHOLD GARBAGE

Every household within the Sanitation Division service area is provided with a standard 65-gallon roll cart for garbage collection. All household garbage must be placed in secure plastic bags prior to placement in the roll cart. Any overflow (excess) garbage can be placed in durable plastic bags, tied securely and placed beside the roll cart. Residents also have the option of obtaining additional garbage roll carts for excess garbage, which will result in an increase in annual sanitation assessment fees. Items must be placed curbside before 7 a.m. on residents' scheduled collection day. Roll carts must be removed by 7 p.m. on residents' scheduled collection day, or according to city code or Homeowners Association (HOA) covenants, if applicable.

Household garbage placed in containers not provided by the Sanitation Division will not be serviced.

UNACCEPTABLE ITEMS (should not be placed in roll cart)

- Dirt, rocks, sod, concrete, hot ashes
- Toxic waste or liquid waste
- Motor oil and filters
- Building materials
- Wet cell batteries
- Construction debris (remodeling)
- Sinks and bathtubs
- Dead animals
- Yard trimmings
- Large appliances or furniture
- Playground equipment
- Automobile tires
- Wood and metal fences
- Decking or other construction and demolition material not identified in the **Special Collections** category
- Loose trash

Proper disposal warning for sharp objects, razor blades, lancets, needles and broken glass

These items can puncture a plastic bag and cause injury to the refuse collector. Please place these items in a taped plastic container with a lid, with the words "Do not recycle."

Proper disposal for dog and cat feces

Must be bagged, then placed in a larger garbage bag with other household garbage being placed in the roll cart.

For more information on garbage roll cart options, and garbage collection policies and procedures, please visit www.dekalbsanitation.com.