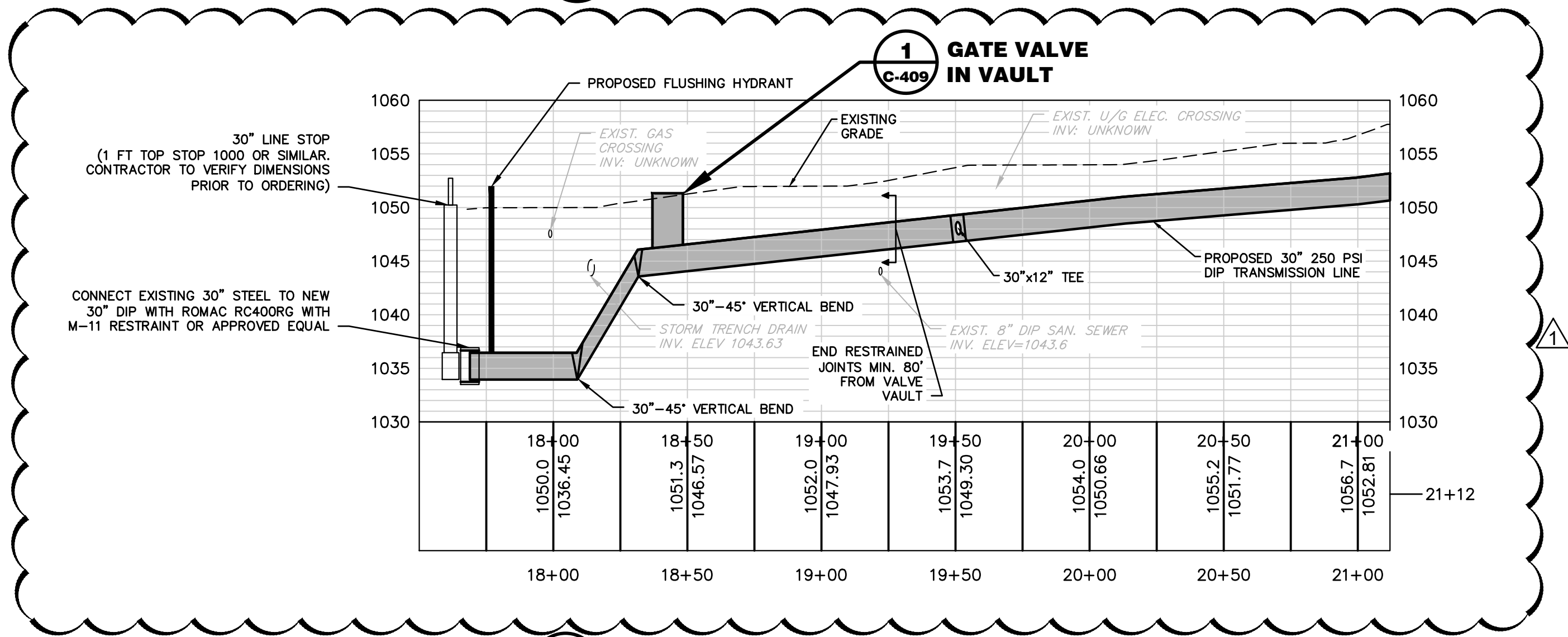
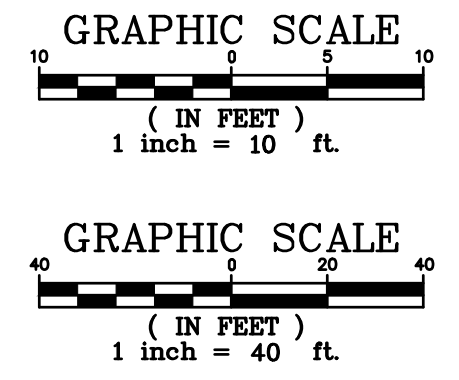


**1 WATERMAIN REPLACEMENT PLAN**  
 C-201 SCALE: 1" = 40'



**2 WATERMAIN REPLACEMENT PROFILE**  
 C-201 SCALE: 1" = 40' HORIZ.; 1" = 10' VERT

- NOTES:**
- REMOVE AND RESET GRANITE CURB WHERE AFFECTED BY WATERLINE INSTALLATION.



**PROFILE NOTE:**

- ELEVATION ON LEFT IS GROUND ELEVATION. ELEVATION ON RIGHT IS TOP OF PROPOSED PIPE.

**PRIME ENGINEERING INCORPORATED**

3715 NORTHSIDE PARKWAY NW  
 300 NORTHCREEK SUITE 200  
 ATLANTA, GEORGIA 30327  
 404-425-7100

**PROJECT:**

**SCOTT BLVD. PHASE 3 WATER MAIN REPLACEMENT**

**DEKALB COUNTY, GA**

PREPARED FOR:  
**DEKALB COUNTY DEPARTMENT OF WATERSHED MANAGEMENT**

NO.	DATE	DESCRIPTION
1	7/15/2021	BID ADDENDUM

**SEAL**

GASWCC CERT. #0126  
 EXP. 7/5/23  
 DATE: 7/15/2021

**DRAWING TITLE**

**WATERMAIN REPLACEMENT PLAN AND PROFILE**

<b>DRAWING DATE</b>	5/22/2020
<b>DRAWING SCALE</b>	1"=40'
<b>PROJECT NUMBER</b>	2013-0027
<b>DRAWING NUMBER</b>	<b>C-201</b>

ISSUED FOR CONSTRUCTION

**DRAWN BY** CTW

**DESIGNED BY** CDC

**CHECKED BY** RRM

C-201

R:\2013-0027 DeKalb-Scott Blvd Ph 3 Waterline Replacement\3 ENGINEERING Drawings\C-201 PLAN AND PROFILE.dwg Thu, 07/15/21 4:51 PM