

Stonemill I and Stonemill II Lift Station Improvement Project

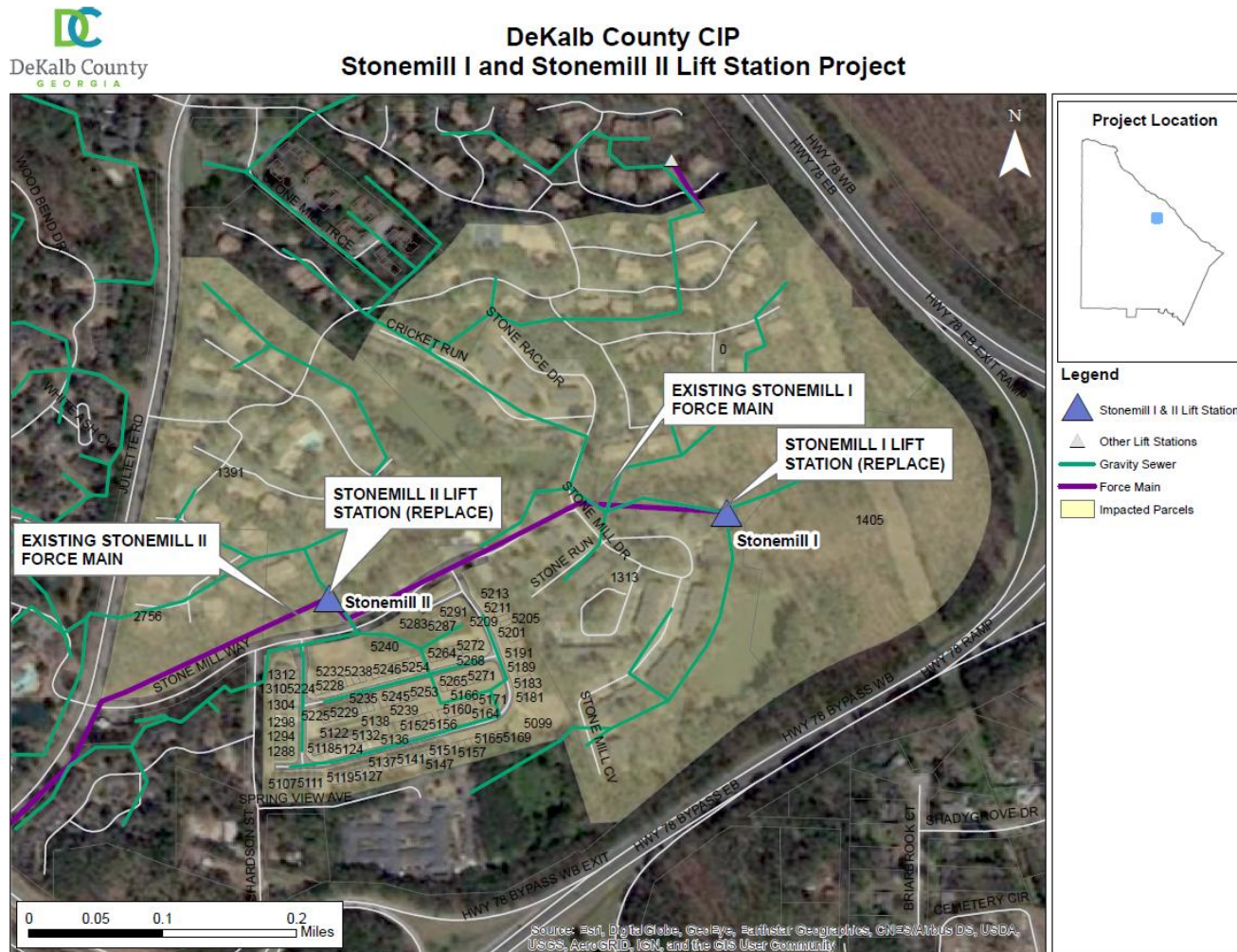
Community Meeting

Thursday, June 21, 2018 – 6:30 p.m.-7:30 p.m.

AGENDA

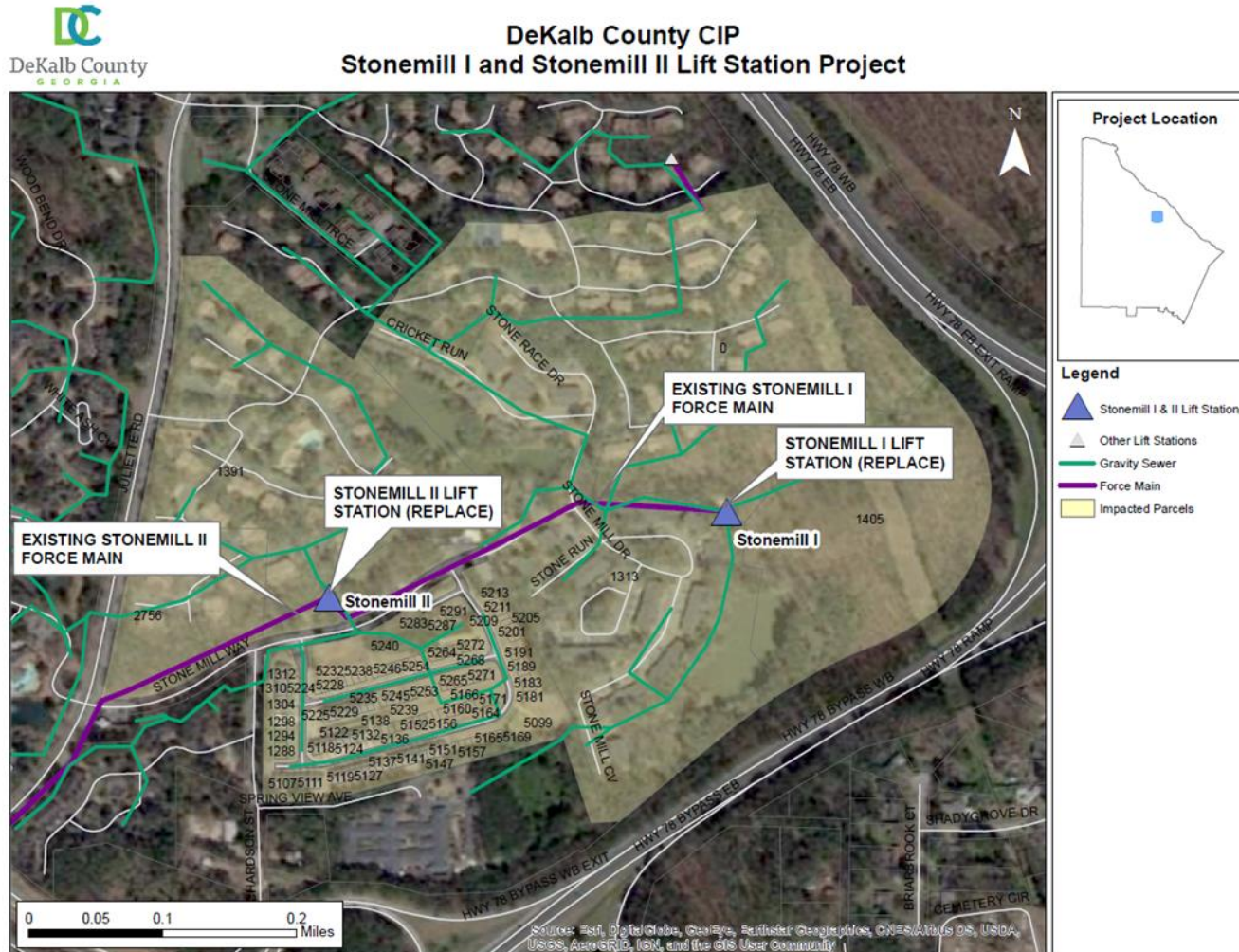
- Welcome
- Introductions
- Project Overview
- Contact Info
- Questions

PROJECT SCOPE



- Installation of sewer pumps, wet well, generator and control panel
- Installation of new utilities, concrete pad, lighting, fencing and motorized gates
- Installation of new retaining wall at the ***Stonemill I Lift Station***
- Expansion of driveway access to lift station

PROJECT SCOPE



- Possible blasting may be required during construction if traditional methods to break rock underground are unsuccessful
- *Residents will be notified at least two weeks in advance of blasting activities*



Preliminary Construction Schedule: (Weather Permitting)

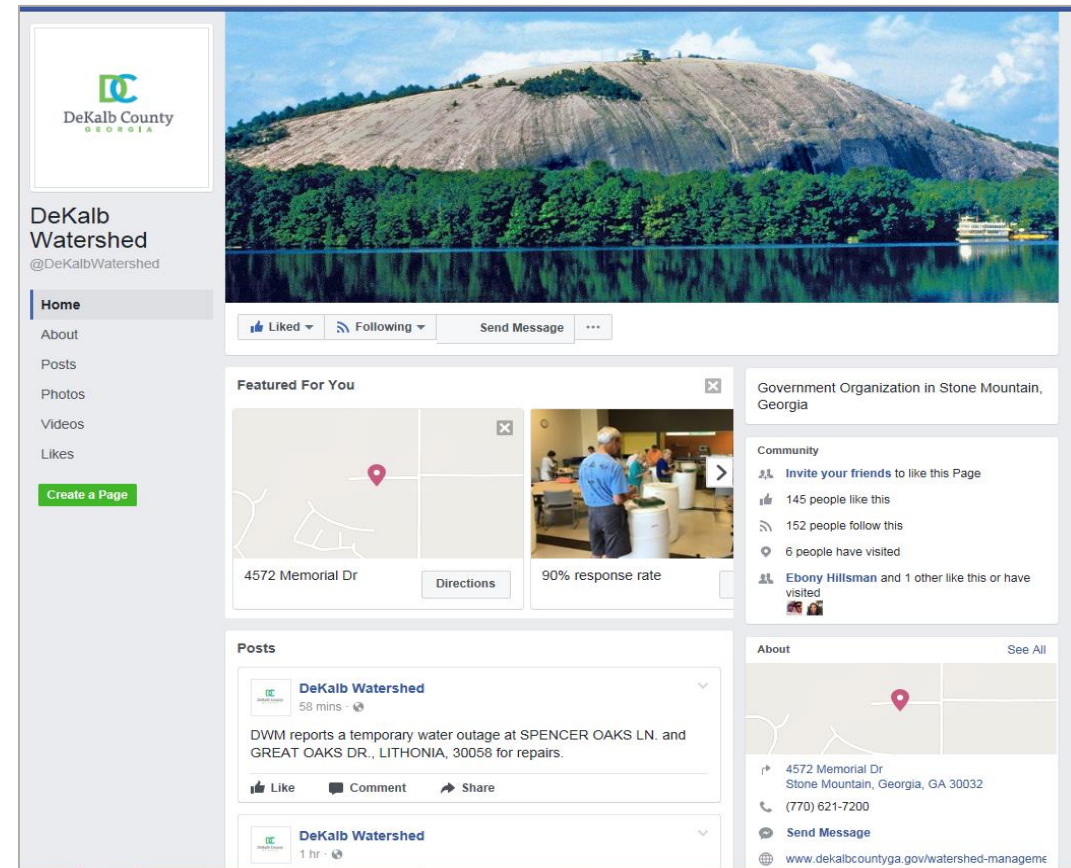
- **Late June to Mid-July**– Site mobilization, clearing, grading and drainage improvements, as well as tree trimming and tree cutting
- **Late-July to August** – Demolition of lift station access driveway, lift station pads, generator pads and removal of fencing
- **September to Mid October** – Installation of new retaining wall at the *Stonemill I Lift Station*, as well as fencing and motorized gate
- **Late October to Mid December**– Installation of new light poles, sewer wet well, pumps and generator
- **Late December to Early February** – Construction concludes

Potential Project Impacts: *Construction hours (7:00am-7:00pm)*

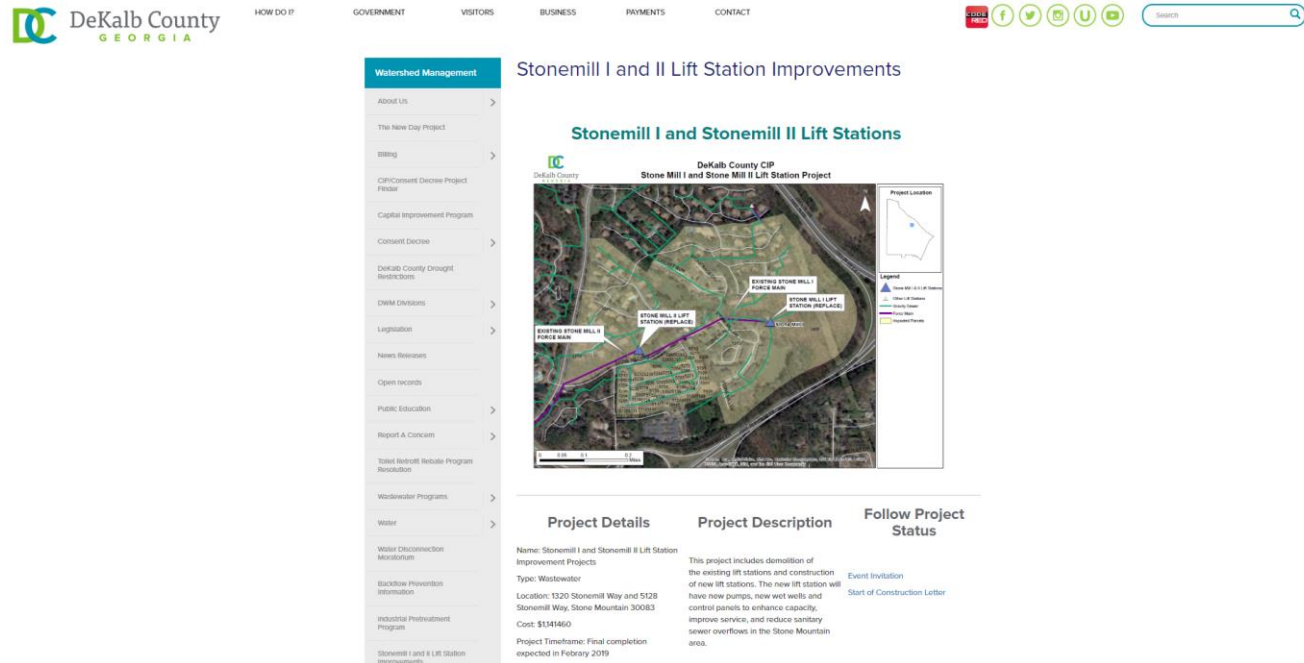
- Construction zone noise:
 - Heavy equipment and materials manipulation using a crane system and staging noise
 - Construction materials such as gravel being dumped and compacted
 - Jackhammering of lift station foundation, grading and excavation of site
 - Installation of sewer pumps, generator, fencing and motorized gate
- Moderate construction and equipment traffic:
 - During construction hours we advise residents that there will be an increase in construction-related traffic
 - There will be temporary parking restrictions due to construction crew access and material storage needs near 1320 Stonemill Way (Stonemill I Lift Station)
 - Construction may require traffic control for short periods of time

HOW WE WILL KEEP YOU INFORMED

- Community Meetings
- Project Bulletins and Flyers
- Email Updates
- Door/Mailbox Hangers
- Social Media –  



HOW WE WILL KEEP YOU INFORMED



The screenshot shows the DeKalb County website's project page for "Stonemill I and II Lift Station Improvements". The page features a navigation menu on the left, a main content area with a map of the project location, and a "Project Details" section. The map shows the project area with labels for "EXISTING STONE HILL I FORCE MAIN", "STONE HILL I LIFT STATION (REPLACE)", "EXISTING STONE HILL II FORCE MAIN", and "STONE HILL II LIFT STATION (REPLACE)". The "Project Details" section includes the following information:

Project Details	Project Description	Follow Project Status
<p>Name: Stonemill I and Stonemill II Lift Station Improvement Projects</p> <p>Type: Wastewater</p> <p>Location: 1320 Stonemill Way and 5128 Stonemill Way, Stone Mountain 30083</p> <p>Cost: \$1041460</p> <p>Project Timeline: Final completion expected in February 2019.</p>	<p>This project includes demolition of the existing lift stations and construction of new lift stations. The new lift station will have new pumps, new wet wells and control panels to enhance capacity, improve service, and reduce sanitary sewer overflows in the Stone Mountain area.</p>	<p>Event Invitation</p> <p>Start of Construction Letter</p>

- Website — www.dekalbwatershed.com
 - Project Page: <https://www.dekalbcountyga.gov/watershed-management/stonemill-i-and-ii-lift-station-improvements>
- Contact Us
 - Email: projectinfo@dekalbcountyga.gov
 - Phone: 1-800-986-1108

Questions?

REMINDER:

Sign-up to receive project updates and alerts via email and text!

THANK YOU!