



DeKalb County
GEORGIA

404.414.2355 (o)
404.298.4446 (f)
DeKalbCountyga.gov

Watershed Management
4572 Memorial Drive
Decatur, GA 30032

May 4, 2017
Via Email and US Mail
7016 1370 0001 1537 2620

Chief Executive Officer
Michael Thurmond

Board of Commissioners

District 1
Nancy Jester

District 2
Jeff Rader

District 3
Larry Johnson

District 4
Stephen Bradshaw

District 5
Mereda Davis Johnson

District 6
Kathie Gannon

District 7
Gregory Adams Sr.

Georgia Environmental Protection Division
ATTN: Hsin-Sheng Yeh
Wastewater Regulatory Program, Municipal Permitting Unit
2 Martin Luther King, Jr. Drive, S.W.
Suite 1152 East Tower
Atlanta, Georgia 30334

Re.: Snapfinger AWTF, Permit No. GA0024147
Pole Bridge AWTF, Permit No. GA0026816
Emergency Actions, Monitoring Program
GAC 391-3-6-.05(3) (c)

Dear Mr. Yeh,

Attached are the Stream Monitoring Program Report Forms for major spills previously reported. The asterisk (*) indicates spills with no data updates from last month's report. The spill incidents are:

1. Discharge of sewage at 2005 Bencal Drive into Sugar Creek on April 28, 2017.
2. Discharge of sewage at 3360 Mountain Drive into Indian Creek on April 14, 2017.
3. Discharge of sewage at 3266 Northlake Parkway into Henderson Mill Creek on April 9, 2017.
4. Discharge of sewage at 4124 Flakes Mill Road into South River Creek on April 6, 2017.
5. Discharge of sewage at 4427 Wesleyan Point into Snapfinger Creek on April 5, 2017.
6. Discharge of sewage at 4124 Flakes Mill Road into South River Creek on April 5, 2017.
7. Discharge of sewage at 1948 East Starmount Road into Doolittle Creek on April 5, 2017.
8. Discharge of sewage at 1440 Sowell Estate into South Fork Peachtree Creek on April 5, 2017.
9. Discharge of sewage at 4664 Flat Bridge Road into South River Creek on March 31, 2017.
10. Discharge of sewage at 4664 Flat Bridge Road into Pole Bridge Creek on March 31, 2017.
11. Discharge of sewage at 3127 Buford Hwy into North Fork Peachtree Creek on March 30, 2017.
12. Discharge of sewage at 3181 Midway Road into Cobbs Creek on March 28, 2017.
13. Discharge of sewage at 4392 Stonington Circle into Nancy Creek on March 22, 2017.*
14. Discharge of sewage at 3158 Beech Drive into Cobbs Creek on March 14, 2017.
15. Discharge of sewage at 1868 Winthrop Drive into Sugar Creek on February 24, 2017.*
16. Discharge of sewage at 3136 Buford Highway into North Fork Peachtree Creek on February 10, 2017. *
17. Discharge of sewage at 4557 Meadow Creek Path into Snapfinger Creek on January 23, 2017.
18. Discharge of sewage at 4124 Flakes Mill Road into South River on January 23, 2017.
19. Discharge of sewage at 4124 Flakes Mill Road into South River on January 21, 2017.
20. Discharge of sewage at 3528 Misty Valley Road into Cobb Creek on January 21, 2017.
21. Discharge of sewage at 1440 Sowell Estate into South Fork Peachtree Creek on January 21, 2017.
22. Discharge of sewage at 506 South McDonough Street into Shoal Creek on January 21, 2017.
23. Discharge of sewage at 1948 East Starmount Way into Doolittle Creek on January 21, 2017.
24. Discharge of sewage at 2746 Laurelwood Road into Nancy Creek on January 10, 2017. *



- 25. Discharge of sewage at 4016 Natalie Trail into South River on December 19, 2016.*
- 26. Discharge of sewage at 3073 Panthersville Road into Doless Creek on November 22, 2016.*
- 27. Discharge of sewage at 4776 Snapfinger Woods Drive into Snapfinger Creek on November 11, 2016.*
- 28. Discharge of sewage at 2291 Burnt Creek Road into Burnt Ford Creek on October 19, 2016.*
- 29. Discharge of sewage at 1357 Deerwood Drive into Shoals Creek on October 11, 2019.*
- 30. Discharge of sewage at 4711 Bishop Ming Boulevard into Snapfinger Creek on September 22, 2016.*
- 31. Discharge of sewage at 2311 Dunwoody Crossing into Nancy Creek on September 6, 2016.*
- 32. Discharge of sewage at 3545 International Park Drive into South River on August 21, 2016.*
- 33. Discharge of sewage at 3540 Bufford Hwy into North Fork Peachtree Creek on August 5, 2016.*
- 34. Discharge of sewage at 3312 Stone Crest Court into Warren Creek on July 28, 2016.*
- 35. Discharge of sewage at 8644 Covington Highway into Tom George Creek on July 13, 2016.*
- 36. Discharge of sewage at 3748 Salem Spring Court into South River on July 9, 2016.*
- 37. Discharge of sewage at 134 Lucerne Street into South Fork Peachtree Creek on May 18, 2016.*

Chief Executive Officer
Michael Thurmond

Board of Commissioners

District 1
Nancy Jester

District 2
Jeff Rader

District 3
Larry Johnson

District 4
Stephen Bradshaw

District 5
Mereda Davis Johnson

District 6
Kathie Gannon

District 7
Gregory Adams Sr.

If you have any questions or comments regarding this matter, please do not hesitate to contact me (slglenn@dekalbcountyga.gov or 770-621-7252).

Sincerely,

Sandra L. Glenn, P.E.
Assistant Director, Compliance
Department of Watershed Management

- cc:
- Patricia Moore, Document Control Coordinator
 - Scott A. Towler, P.E., Director
 - Margaret Tanner, P.E., Deputy Director
 - Reginald Wells, Deputy Director
 - Darren Eastall, Consent Decree Administrator
 - Orthelus Perdue, Consent Decree Coordinator
 - Jody Shoemaker, Laboratory Manager

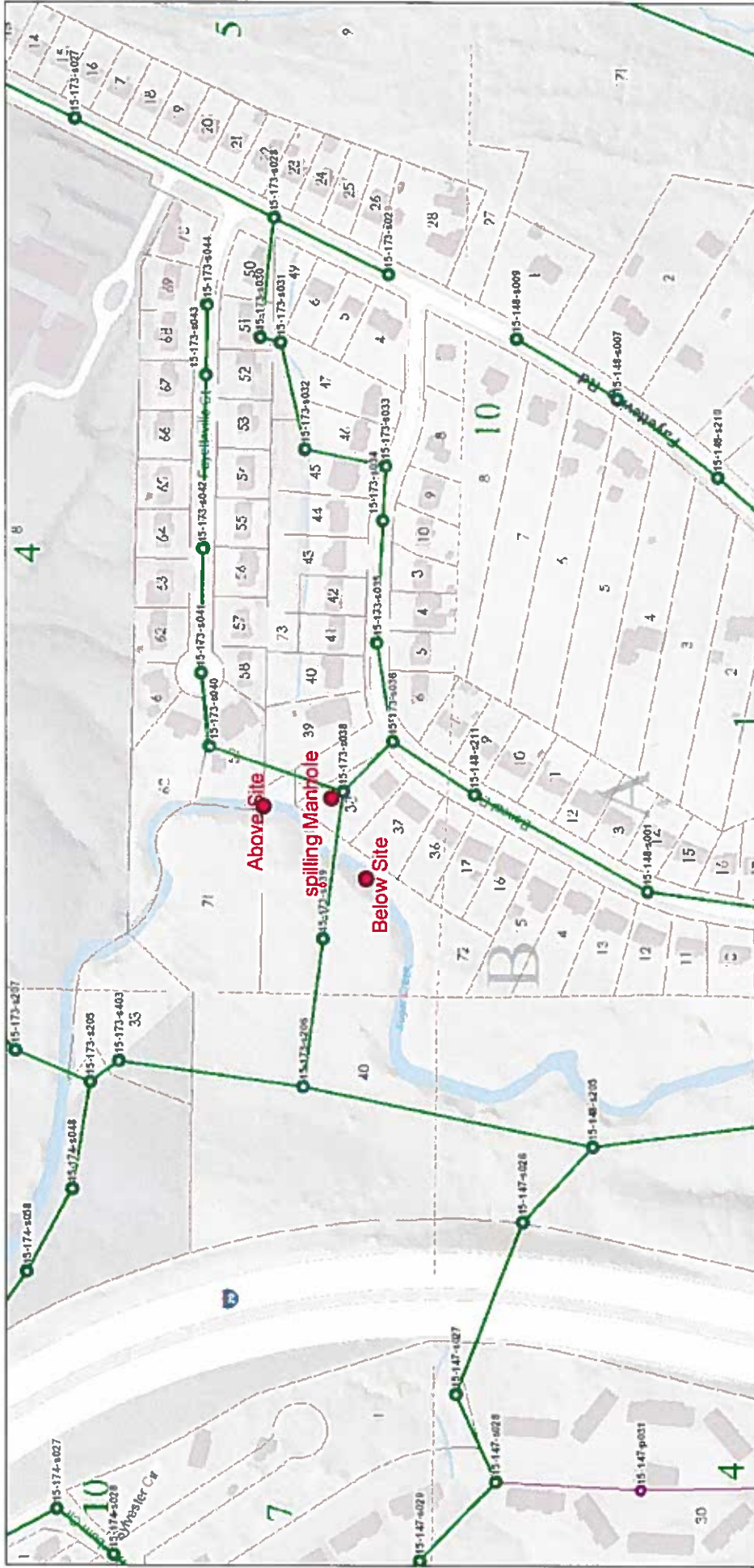
STREAM MONITORING PROGRAM REPORT FORM FOR A MAJOR SPILL
 {Attn: [Permitting, Compliance and Enforcement Program] Fax No. 404-362-2691}

Name of City/County: Atlanta /DeKalb Spill Amount 54000
 Date Spill Occurred: 1/21/2017 Date Spill Reported to EPD: 4/27/2017
 Spill Location: 2005 Bencal Drive Date of Public Notice (PN): 5/11/2017
Atlanta, GA, 30316
 Name of Receiving Stream Affected: Sugar Creek
 Upstream Sampling Location: Above Spill (yds): Written Report Submitted to EPD: Yes
 Downstream Sampling Location: Below Spill(yds): Copy of PN Submitted to EPD: No

		ABOVE				BELOW			
	DATE	DO	TEMP	pH	#/100mL Fecal	DO	TEMP	pH	#/100mL Fecal
DAY 1	4/28/2017	7.9	20.0	7.3	1,600	7.3	20.1	7.2	2,700
DAY 2	4/29/2017	6.1	20.4	7.6	5,800	5.2	20.1	7.3	8,000
DAY 3	4/30/2017	5.8	21.0	6.9	14,000	5.7	21.0	7.0	15,000
DAY 4	5/1/2017								
DAY 5	5/2/2017								
DAY 6	5/3/2017								
DAY 7	5/4/2017								
WEEK 1 Geometric Mean:									
WEEK 2	5/8/2017								
WEEK 3	5/15/2017								
WEEK 4	5/22/2017								
Month 1 Geometric Mean:(Use all 10 data points)									
Month 3									
WEEK 1	7/3/2017								
WEEK 2	7/10/2017								
WEEK 3	7/17/2017								
WEEK 4	7/24/2017								
MONTH 12									
WEEK 1	4/2/2018								
WEEK 2	4/9/2018								
WEEK 3	4/16/2018								
WEEK 4	4/23/2018								
MONTH 12 Geometric Mean:									

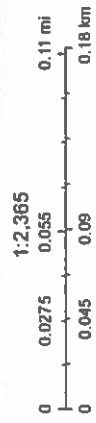
4220 International Parkway, Suite 101
 Atlanta, Georgia 30354
 404/362/2680
 FAX 404/362/2691

2005 Bencal Dr



April 28, 2017

- DeKalb
- Atlanta
- Not in County
- Private
- DEKALB
- ATLANTA
- LATERAL
- PRIVATE
- Flow Arrows
- Force Mains
- Lift Stations
- Air Valves
- District
- Land_Lot
- TaxParcel



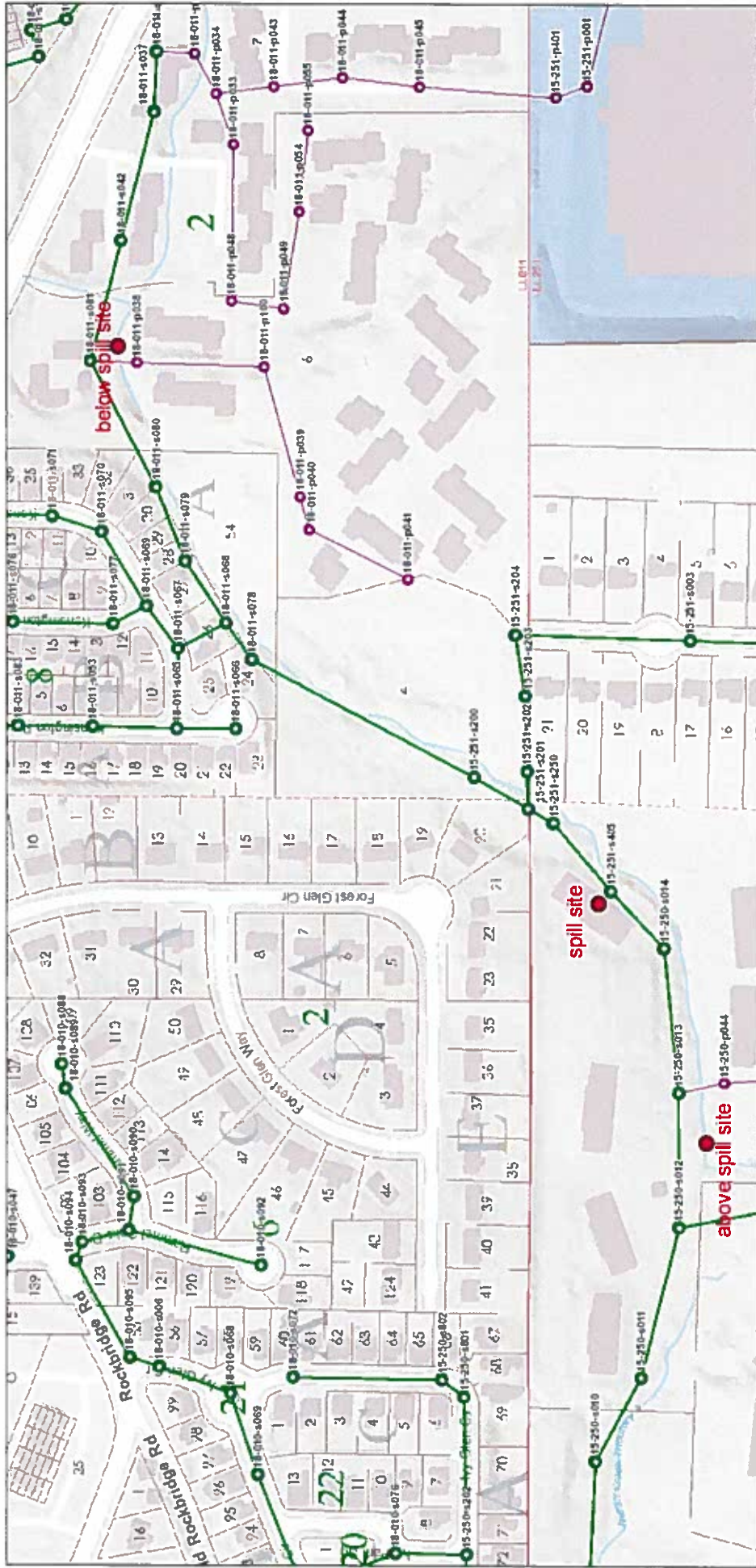
STREAM MONITORING PROGRAM REPORT FORM FOR A MAJOR SPILL
 {Attn: [Permitting, Compliance and Enforcement Program] Fax No. 404-362-2691}

Name of City/County: Decatur /DeKalb Spill Amount 13230
 Date Spill Occurred: 4/14/2017 Date Spill Reported to EPD: 4/14/2017
 Spill Location: 3360 Mountain Drive Date of Public Notice (PN): 4/27/2017
Decatur, GA, 30032
 Name of Receiving Stream Affected: Indian Creek
 Upstream Sampling Location: Above Spill (yds): 200 Written Report Submitted to EPD: Yes
 Downstream Sampling Location: Below Spill(yds): 516 Copy of PN Submitted to EPD: No

		ABOVE				BELOW			
	DATE	DO	TEMP	pH	#/100mL Fecal	DO	TEMP	pH	#/100mL Fecal
DAY 1	4/15/2017	6.5	16.6	7.1	37,000	8.5	16.4	7.0	3,600
DAY 2	4/16/2017	6.7	16.4	6.9	59,000	5.5	16.7	7.1	420
DAY 3	4/17/2017	8.1	16.9	7.0	11,000	8.6	17.7	7.2	340
DAY 4	4/18/2017	8.7	17.5	7.0	>60000	9.2	18.3	7.0	1,800
DAY 5	4/19/2017	8.1	17.5	6.5	1,500	8.4	18.1	6.8	3,400
DAY 6	4/20/2017	6.0	17.7	9.1	>60000	7.0	18.4	9.2	4,300
DAY 7	4/21/2017	6.0	18.2	7.5	28,000	7.0	18.9	7.7	1,600
WEEK 1 Geometric Mean:					23,200				
WEEK 2	4/25/2017	7.7	16.6	8.7	3,600	8.9	16.5	7.8	4,000
WEEK 3	5/1/2017								
WEEK 4	5/8/2017								
Month 1 Geometric Mean:(Use all 10 data points)									
Month 3									
WEEK 1	6/5/2017								
WEEK 2	6/12/2017								
WEEK 3	6/19/2017								
WEEK 4	6/26/2017								
MONTH 12									
WEEK 1	4/2/2018								
WEEK 2	4/9/2018								
WEEK 3	4/16/2018								
WEEK 4	4/23/2018								
MONTH 12 Geometric Mean:									

4220 International Parkway, Suite 101
 Atlanta, Georgia 30354
 404/362/2680
 FAX 404/362/2691

3360 Mountain Dr.



April 17, 2017

- DeKalb
- Atlanta
- Not in County
- Private
- DEKALB
- ATLANTA
- LATERAL
- PRIVATE
- Flow Arrows
- Force Mains
- + Lift Stations
- + Air Valves
- District
- Land_Lot
- Parcel

1:2,365



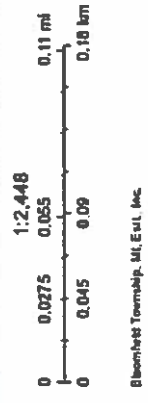
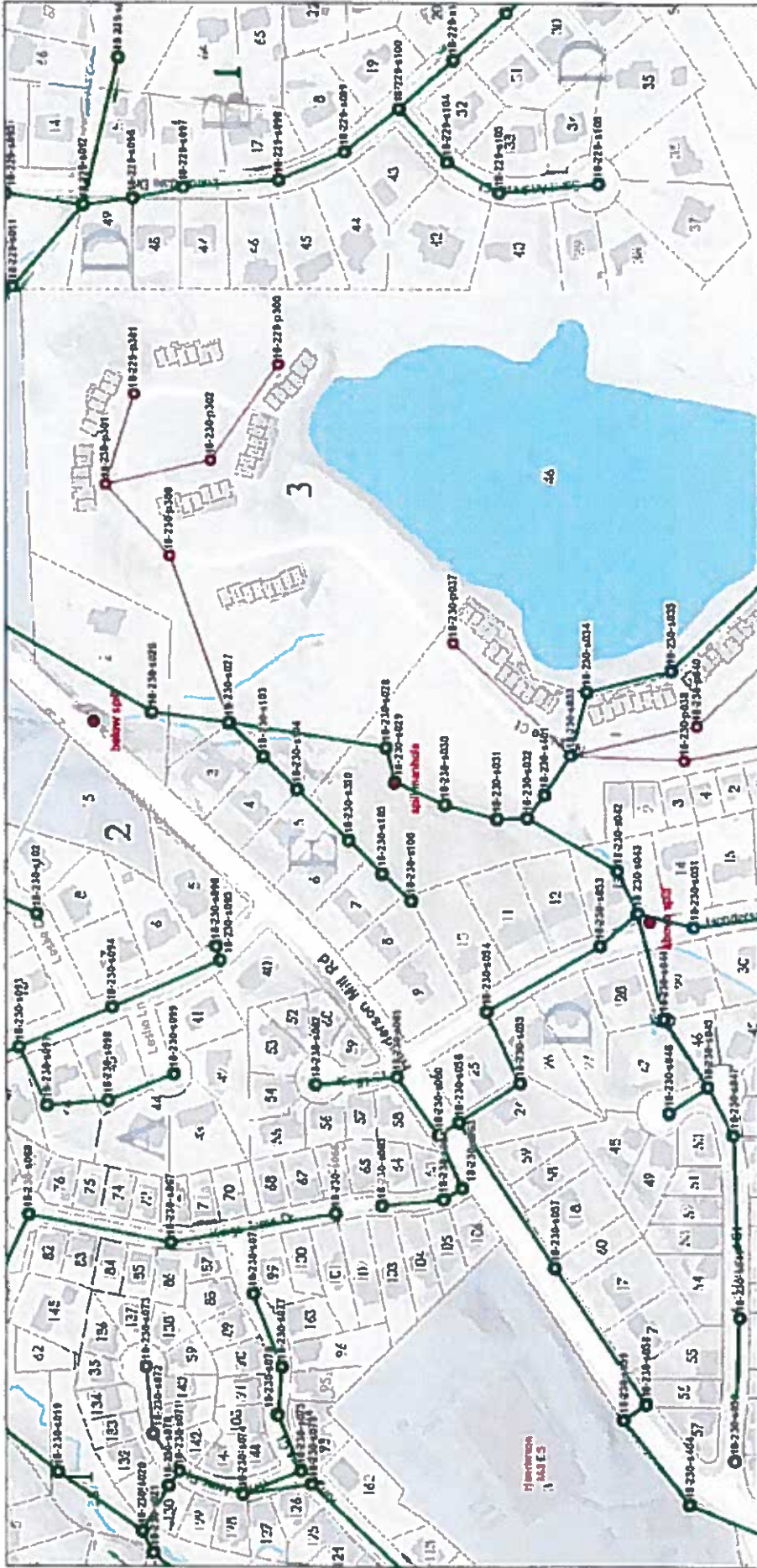
STREAM MONITORING PROGRAM REPORT FORM FOR A MAJOR SPILL
 {Attn: [Permitting, Compliance and Enforcement Program] Fax No. 404-362-2691}

Name of City/County:	<u>Atlanta /DeKalb</u>	Spill Amount	<u>13230</u>
Date Spill Occurred:	<u>4/9/2017</u>	Date Spill Reported to EPD:	<u>4/9/2017</u>
Spill Location:	<u>3266 Northlake Pkwy</u>	Date of Public Notice (PN):	<u>4/20/2017</u>
	<u>Atlanta GA 30345</u>		
Name of Receiving Stream Affected:	<u>Henderson Mill Creek</u>		
Upstream Sampling Location:	<u>Above Spill (yds): 266</u>	Written Report Submitted to EPD:	<u>Yes</u>
Downstream Sampling Location:	<u>Below Spill(yds): 209</u>	Copy of PN Submitted to EPD:	<u>No</u>

		ABOVE				BELOW			
	DATE	DO	TEMP	pH	#/100mL Fecal	DO	TEMP	pH	#/100mL Fecal
DAY 1	4/10/2017	7.3	18.4	6.9	260	3.4	20.6	7.0	>60000
DAY 2	4/11/2017	8.0	15.3	6.9	570	4.3	16.6	6.8	24,000
DAY 3	4/12/2017	6.6	16.7	7.2	440	6.0	19.1	7.0	5,200
DAY 4	4/13/2017	7.2	15.9	6.7	410	5.7	17.8	6.8	6,000
DAY 5	4/14/2017	6.2	16.2	6.6	480	4.2	17.2	6.8	2,900
DAY 6	4/15/2017	6.4	16.5	6.6	210	4.3	16.6	6.8	590
DAY 7	4/16/2017	6.1	16.7	6.6	350	4.2	16.5	6.6	600
WEEK 1 Geometric Mean:					400				
WEEK 2	4/19/2017	6.7	16.8	7.6	545	7.4	19.6	7.6	4,400
WEEK 3	4/28/2017	6.2	17.5	7.0	1,300	6.1	18.0	7.4	1,800
WEEK 4	5/8/2017								
Month 1 Geometric Mean:(Use all 10 data points)									
Month 3									
WEEK 1	6/5/2017								
WEEK 2	6/12/2017								
WEEK 3	6/19/2017								
WEEK 4	6/26/2017								
MONTH 12									
WEEK 1	4/2/2018								
WEEK 2	4/9/2018								
WEEK 3	4/16/2018								
WEEK 4	4/23/2018								
MONTH 12 Geometric Mean:									

4220 International Parkway, Suite 101
 Atlanta, Georgia 30354
 404/362/2680
 FAX 404/362/2691

3266 Northlake Pkwy



Blount County, GA

Blount County, GA

Blount County, GA

Blount County, GA

Blount County, GA

Blount County, GA

Blount County, GA

Blount County, GA

Blount County, GA

Blount County, GA

Blount County, GA

Blount County, GA

Blount County, GA

Blount County, GA

Blount County, GA

Blount County, GA

Blount County, GA

Blount County, GA

Blount County, GA

Blount County, GA

Blount County, GA

Blount County, GA

Blount County, GA

Blount County, GA

Blount County, GA

Blount County, GA

Blount County, GA

Blount County, GA

Blount County, GA

Blount County, GA

Blount County, GA

Blount County, GA

Blount County, GA

Blount County, GA

Blount County, GA

Blount County, GA

Blount County, GA

- April 10, 2017
- DeKalb
- Atlanta
- Not in County
- Private
- DEKALB
- ATLANTA
- LATERAL
- PRIVATE
- Flow Arrows
- Force Mains
- LN Stations
- Air Valves
- District
- Land_Lot
- TaxParcel

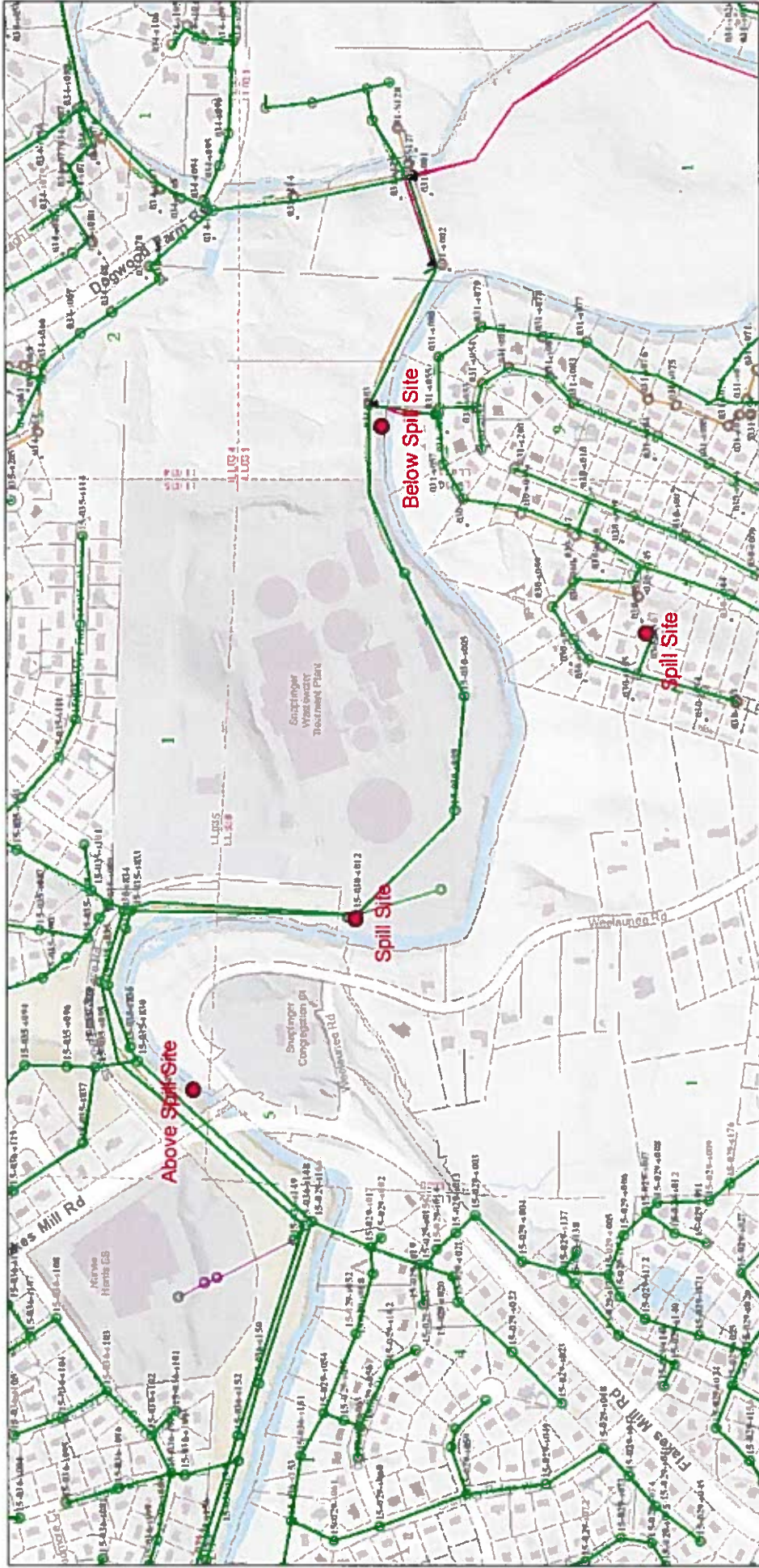
STREAM MONITORING PROGRAM REPORT FORM FOR A MAJOR SPILL
 {Attn: [Permitting, Compliance and Enforcement Program] Fax No. 404-362-2691}

Name of City/County: Ellenwood/DeKalb Spill Amount (12000)
 Date Spill Occurred: 4/6/2017 Date Spill Reported to EPD: 4/6/2017
 Spill Location: 4124 Flakes Mill Rd Date of Public Notice (PN): 4/20/2017
Ellenwood, GA 30294
 Name of Receiving Stream Affected: South River Creek
 Upstream Sampling Location: Above Spill (yds): 1277 Written Report Submitted to EPD: Yes
 Downstream Sampling Location: Below Spill(yds): 20 Copy of PN Submitted to EPD: No

		ABOVE				BELOW			
	DATE	DO	TEMP	pH	#/100mL Fecal	DO	TEMP	pH	#/100mL Fecal
DAY 1	4/7/2017	8.8	13.6	6.6	29,000	9.1	14.2	6.5	>60000
DAY 2	4/8/2017	8.5	12.4	7.0	91	8.4	14.0	6.3	3,700
DAY 3	4/9/2017	8.1	13.1	7.0	1,900	8.4	14.1	6.8	1,500
DAY 4	4/10/2017	7.8	14.2	7.1	709	7.8	15.0	6.9	3,500
DAY 5	4/11/2017	7.6	15.6	7.1	1,300	7.5	16.3	6.9	440
DAY 6	4/12/2017	9.0	16.7	7.1	490	9.2	17.4	6.7	300
DAY 7	4/13/2017	7.5	16.6	6.4	250	6.7	17.1	6.5	150
WEEK 1 Geometric Mean:					900				
WEEK 2	4/17/2017	6.8	18.1	7.7	230	6.5	18.8	7.4	180
WEEK 3	4/24/2017	6.3	17.5	7.5	19,000	6.9	18.1	7.1	4,600
WEEK 4	5/1/2017								
Month 1 Geometric Mean:(Use all 10 data points)									
Month 3									
WEEK 1	6/5/2017								
WEEK 2	6/12/2017								
WEEK 3	6/19/2017								
WEEK 4	6/26/2017								
MONTH 12									
WEEK 1	4/2/2018								
WEEK 2	4/9/2018								
WEEK 3	4/16/2018								
WEEK 4	4/23/2018								
MONTH 12 Geometric Mean:									

4220 International Parkway, Suite 101
 Atlanta, Georgia 30354
 404/362/2680
 FAX 404/362/2691

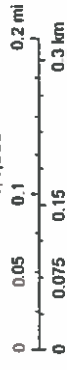
4124 Flakes Mill Rd



April 14, 2017

- DEKALB
- ATLANTA
- LATERAL
- PRIVATE
- Flow Arrows
- Force Mains
- Lift Stations
- Sewer Manholes
- Sewer Mains
- Unverified Sewer Manholes
- Unverified Sewer Mains
- Private Manholes
- Private Sewer mains
- Unverified Private Manholes
- Unverified Private Sewer Mains
- manhole Numbers
- Flow Arrows
- Force Mains
- Lift Stations
- Air Valves
- District
- Land_Lot
- TaxParcel

1:4,935



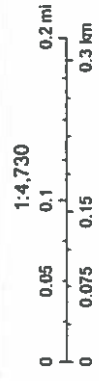
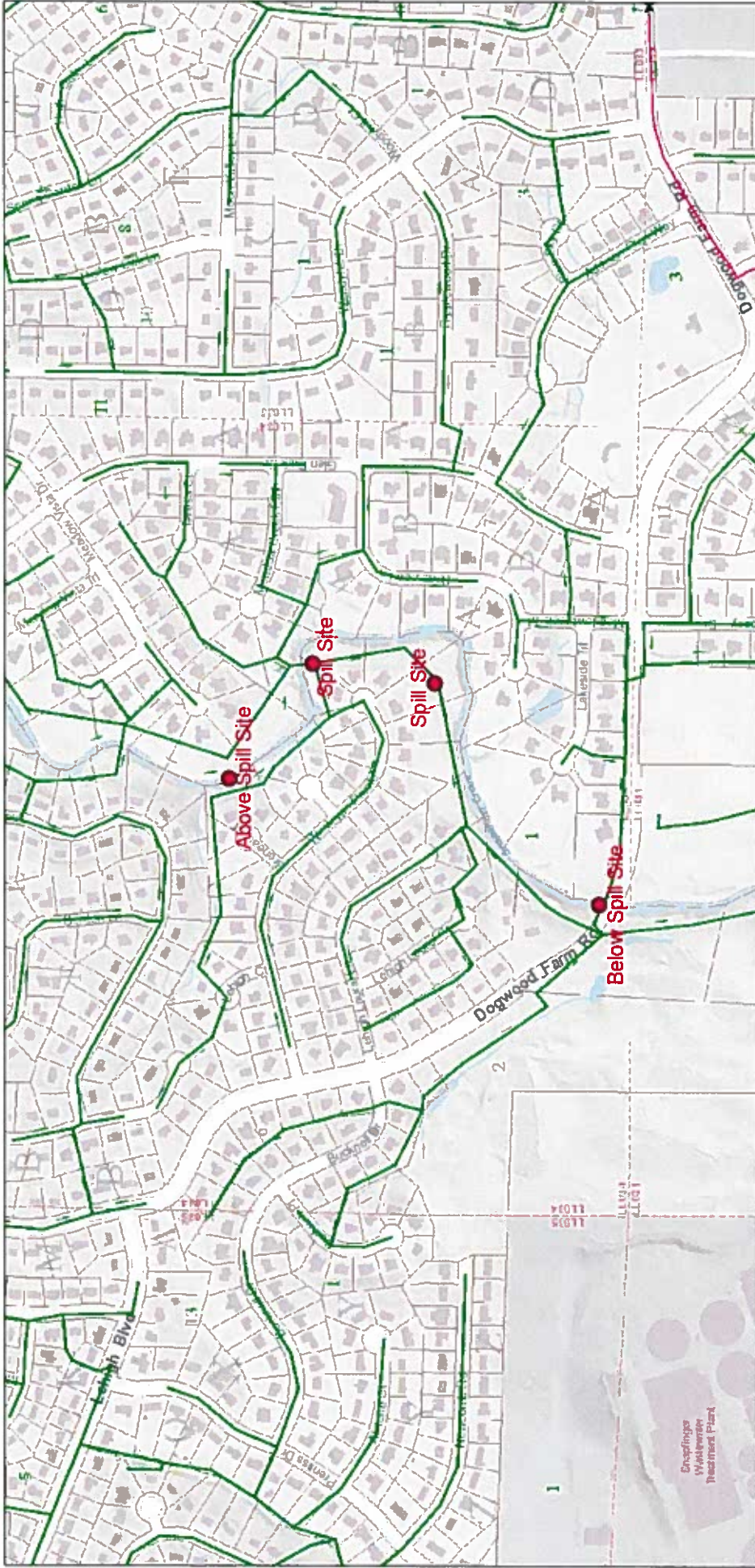
STREAM MONITORING PROGRAM REPORT FORM FOR A MAJOR SPILL
 {Attn: [Permitting, Compliance and Enforcement Program] Fax No. 404-362-2691}

Name of City/County:	<u>Decatur/Dekalb</u>	Spill Amount (G)	<u>317200</u>
Date Spill Occurred:	<u>4/5/2017</u>	Date Spill Reported to EPD:	<u>4/5/2017</u>
Spill Location:	<u>4427 Wesleyan Pointe</u>	Date of Public Notice (PN):	<u>4/20/2017</u>
	<u>Decatur, GA 30034</u>		
Name of Receiving Stream Affected:	<u>Snapfinger Creek</u>		
Upstream Sampling Location:	<u>Above Spill (yds): 178</u>		
Downstream Sampling Location:	<u>Below Spill(yds): 366</u>		
		Written Report Submitted to EPD:	Yes
		Copy of PN Submitted to EPD:	No

		ABOVE				BELOW			
	DATE	DO	TEMP	pH	#/100mL Fecal Coliform	DO	TEMP	pH	#/100mL Fecal Coliform
DAY 1	4/6/2017	8.4	15.7	6.3	9,000	8.2	15.7	6.2	18,000
DAY 2	4/7/2017	10.2	13.3	6.7	30,000	9.9	13.3	6.7	5,400
DAY 3	4/8/2017	9.3	12.6	6.9	11,000	9.3	12.5	6.9	10,000
DAY 4	4/9/2017	9.1	12.8	7.2	3,800	9.0	12.1	7.3	4,000
DAY 5	4/10/2017	8.0	14.1	7.5	8,000	8.5	14.1	7.3	12,000
DAY 6	4/11/2017	7.9	15.5	7.3	11,000	8.1	15.6	7.6	11,000
DAY 7	4/12/2017	9.1	16.7	7.6	4,500	9.5	16.8	7.5	4,900
WEEK 1 Geometric Mean:					8,900				
WEEK 2	4/18/2017	6.9	18.1	7.1	5,300	7.1	18.1	7.3	380
WEEK 3	4/25/2017	7.4	16.5	7.7	4,100	7.7	16.4	7.2	4,300
WEEK 4	5/1/2017								
Month 1 Geometric Mean:(Use all 10 data points)									
Month 3									
WEEK 1	6/5/2017								
WEEK 2	6/12/2017								
WEEK 3	6/19/2017								
WEEK 4	6/26/2017								
MONTH 12									
WEEK 1	4/2/2018								
WEEK 2	4/9/2018								
WEEK 3	4/16/2018								
WEEK 4	4/23/2018								
MONTH 12 Geometric Mean:									

4220 International Parkway, Suite 101
 Atlanta, Georgia 30354
 404/362/2680
 FAX 404/362/2691

4427 Wesleyan Pointe



April 7, 2017

- DEKALB
- ATLANTA
- LATERAL
- PRIVATE
- Flow Arrows
- Force Mains
- LIFT STATION
- Spill Site
- District
- Land_Lot
- TaxParcel

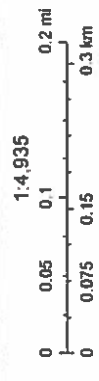
STREAM MONITORING PROGRAM REPORT FORM FOR A MAJOR SPILL
 {Attn: [Permitting, Compliance and Enforcement Program] Fax No. 404-362-2691}

Name of City/County:	<u>Ellenwood/DeKalb</u>	Spill Amount (G)	<u>85250</u>
Date Spill Occurred:	<u>4/5/2017</u>	Date Spill Reported to EPD:	<u>4/5/2017</u>
Spill Location:	<u>4124 Flakes Mill Rd</u>	Date of Public Notice (PN):	<u>4/20/2017</u>
	<u>Ellenwood, GA 30294</u>		
Name of Receiving Stream Affected:	<u>South River Creek</u>		
Upstream Sampling Location:	<u>Above Spill (yds): 1277</u>		
Downstream Sampling Location:	<u>Below Spill(yds): 20</u>		
		Written Report Submitted to EPD:	Yes
		Copy of PN Submitted to EPD:	No

	DATE	ABOVE				BELOW			
		DO	TEMP	pH	#/100mL Fecal Coliform	DO	TEMP	pH	#/100mL Fecal Coliform
DAY 1	4/6/2017	5.1	16.2	6.1	23,000	6.1	16.3	6.1	33,000
DAY 2	4/7/2017	8.8	13.6	6.6	29,000	9.1	14.2	6.5	>60000
DAY 3	4/8/2017	8.5	12.4	7.0	91	8.4	14.0	6.3	3,700
DAY 4	4/9/2017	8.1	13.1	7.0	1,900	8.6	14.1	6.8	1,500
DAY 5	4/10/2017	7.8	14.2	7.1	709	7.8	15.0	6.9	3,500
DAY 6	4/11/2017	7.6	15.6	7.1	1,300	7.5	16.3	6.9	440
DAY 7	4/12/2017	9.0	16.7	7.1	490	9.2	17.4	6.7	300
WEEK 1 Geometric Mean:					1,800	2,100			
WEEK 2	4/17/2017	6.8	18.1	7.7	230	6.5	18.8	7.4	180
WEEK 3	4/24/2017	6.3	17.5	7.5	19,000	6.9	18.1	7.1	4,600
WEEK 4	5/1/2017								
Month 1 Geometric Mean:(Use all 10 data points)									
Month 3									
WEEK 1	6/5/2017								
WEEK 2	6/12/2017								
WEEK 3	6/19/2017								
WEEK 4	6/26/2017								
MONTH 12									
WEEK 1	4/2/2018								
WEEK 2	4/9/2018								
WEEK 3	4/16/2018								
WEEK 4	4/23/2018								
MONTH 12 Geometric Mean:									

4220 International Parkway, Suite 101
 Atlanta, Georgia 30354
 404/362/2680
 FAX 404/362/2691

4124 Flakes Mill Rd



- April 14, 2017
- DEKALB
 - ATLANTA
 - LATERAL
 - PRIVATE
 - Flow Arrows
 - Force Mains
 - Lift Stations
 - Sewer Manholes
 - Sewer Mains
 - Unverified Sewer Manholes
 - Unverified Sewer Mains
 - Private Manholes
 - Private Sewer mains
 - Unverified Private Manholes
 - Unverified Private Sewer Mains
 - manhole Numbers
 - Flow Arrows
 - Force Mains
 - Lift Stations
 - Air Valves
 - District
 - Land_Lot
 - TaxParcel

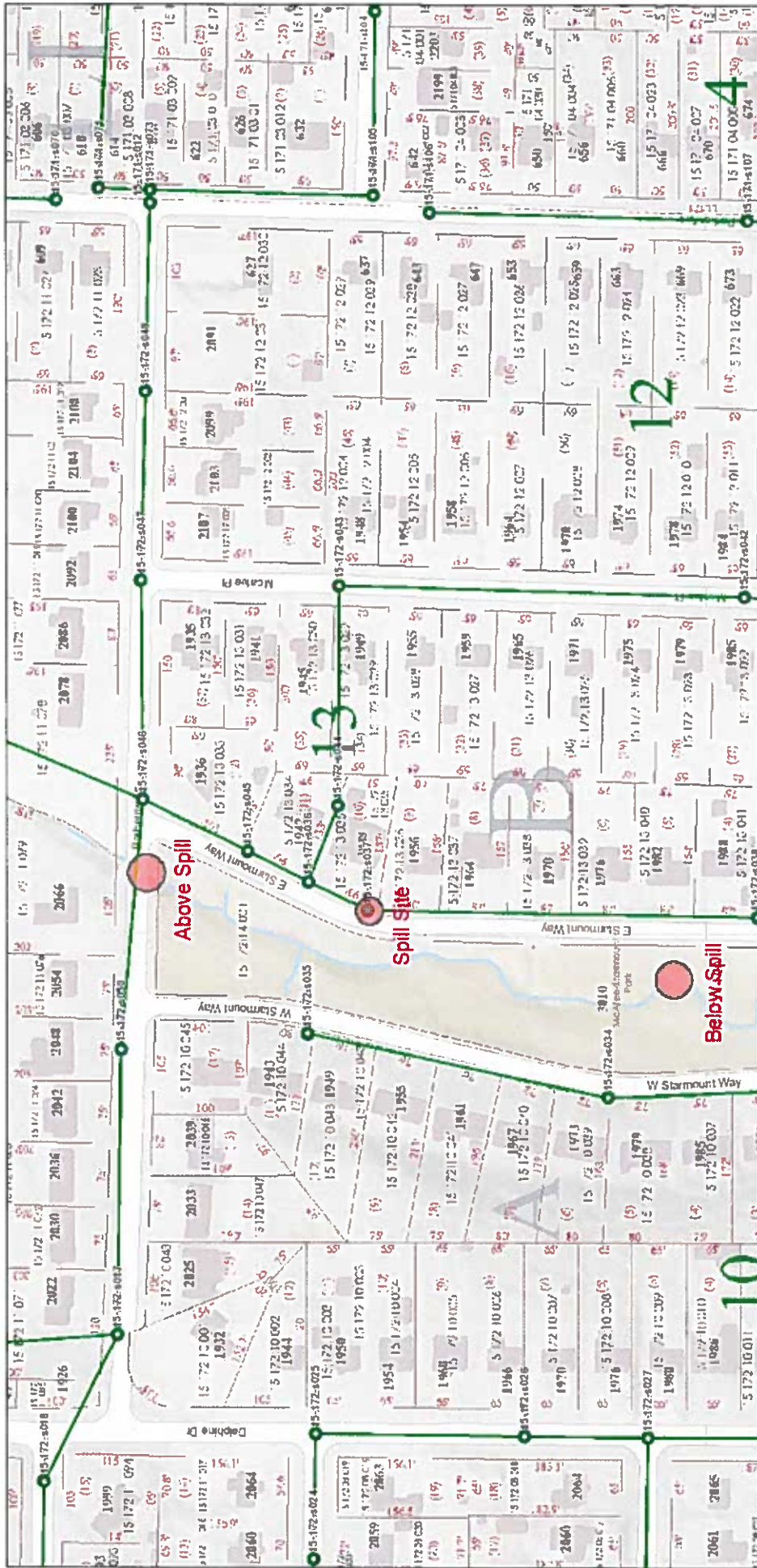
STREAM MONITORING PROGRAM REPORT FORM FOR A MAJOR SPILL
 {Attn: [Permitting, Compliance and Enforcement Program] Fax No. 404-362-2691}

Name of City/County:	<u>Decatur/DeKalb</u>	Spill Amount (G)	<u>31500</u>
Date Spill Occurred:	<u>4/5/2017</u>	Date Spill Reported to EPD:	<u>4/5/2017</u>
Spill Location:	<u>1948 East Starmount Way</u>	Date of Public Notice (PN):	<u>4/13/2017</u>
	<u>Decatur, GA 30032</u>		
Name of Receiving Stream Affected:	<u>Doolittle Creek</u>		
Upstream Sampling Location:	<u>Above Spill (yds): 71</u>	Written Report Submitted to EPD:	<u>Yes</u>
Downstream Sampling Location:	<u>Below Spill(yds): 302</u>	Copy of PN Submitted to EPD:	<u>No</u>

		ABOVE				BELOW			
	DATE	DO	TEMP	pH	#/100mL Fecal Coliform	DO	TEMP	pH	#/100mL Fecal Coliform
DAY 1	4/6/2017	9.0	16.1	6.7	2,900	8.8	16.0	6.8	2,500
DAY 2	4/7/2017	7.2	13.6	6.6	1,500	6.8	13.6	6.6	2,200
DAY 3	4/8/2017	8.4	11.8	6.8	490	8.4	12.0	6.8	500
DAY 4	4/9/2017	8.8	13.3	7.3	580	8.2	14.3	7.3	1,400
DAY 5	4/10/2017	8.9	13.8	7.0	5,100	7.9	14.3	7.0	1,900
DAY 6	4/11/2017	9.7	14.8	7.1	1,100	8.4	15.2	7.0	2,200
DAY 7	4/12/2017	7.5	16.6	7.1	2,900	8.6	16.7	7.1	3,000
WEEK 1 Geometric Mean:					1,500				
WEEK 2	4/21/2017	7.5	18.0	6.5	1,200	7.4	19.1	6.8	1,500
WEEK 3	4/27/2017	8.3	17.6	6.6	600	6.9	17.8	6.9	510
WEEK 4	5/1/2017								
Month 1 Geometric Mean:(Use all 10 data points)									
Month 3									
WEEK 1	6/5/2017								
WEEK 2	6/12/2017								
WEEK 3	6/19/2017								
WEEK 4	6/26/2017								
MONTH 12									
WEEK 1	4/2/2018								
WEEK 2	4/9/2018								
WEEK 3	4/16/2018								
WEEK 4	4/23/2018								
MONTH 12 Geometric Mean:									

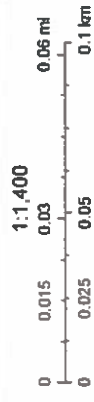
4220 International Parkway, Suite 101
 Atlanta, Georgia 30354
 404/362/2680
 FAX 404/362/2691

1948 Starmount Way



January 22, 2017

- DeKalb
- Atlanta
- Not in County
- Private
- DEKALB
- ATLANTA
- LATERAL
- PRIVATE
- Flow Arrows
- Force Mains
- Lift Stations
- Air Valves
- Sewer Manholes
- Sewer Mains
- Unverified Sewer Manholes
- Unverified Sewer Mains
- Private Manholes
- Private Sewer mains
- Unverified Private Manholes
- Unverified Private Sewer Mains
- Air Valves
- District
- Land_Lot
- Address
- TaxParcel
- manhole Numbers
- Flow Arrows
- Force Mains
- Lift Stations



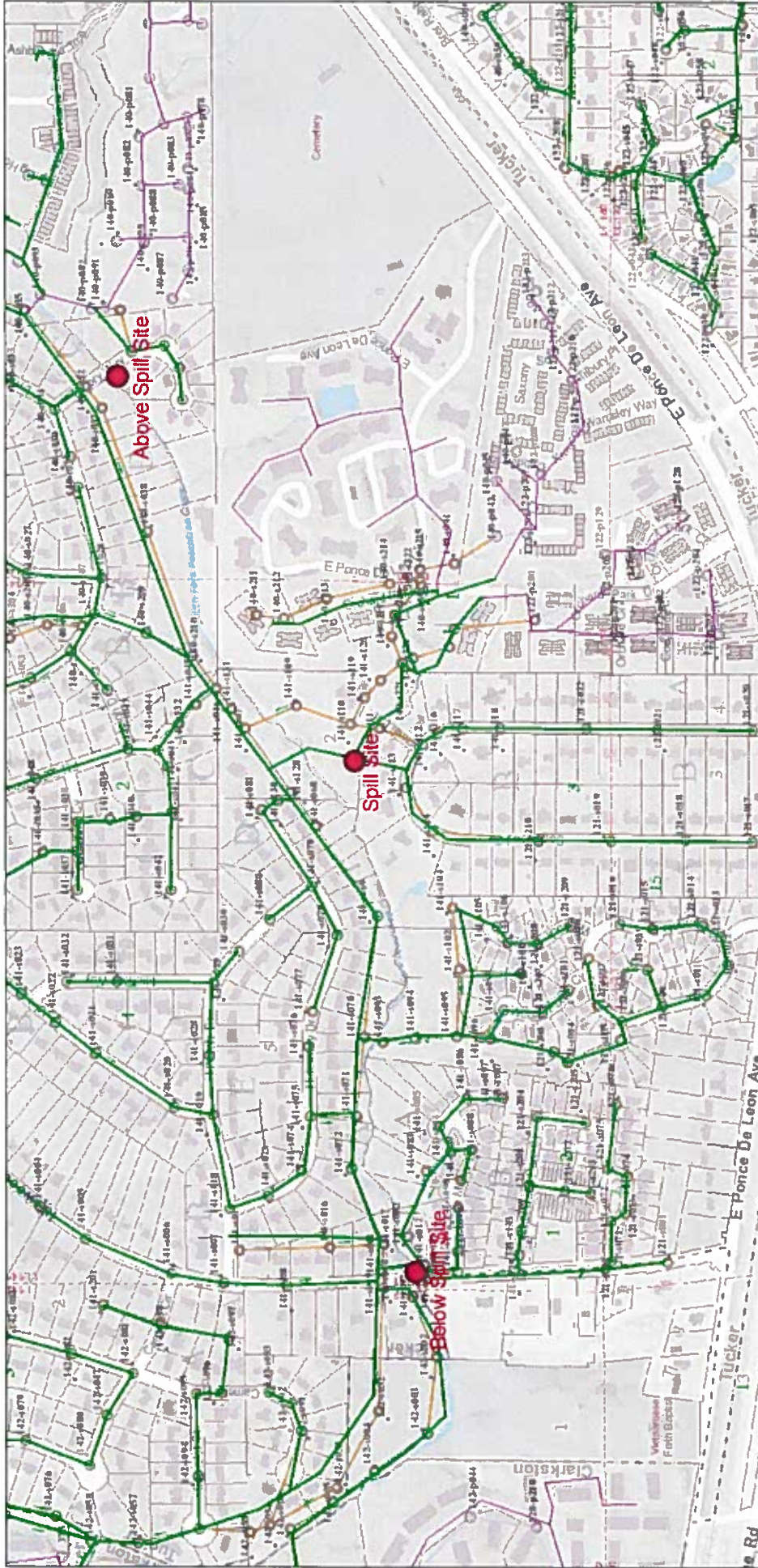
STREAM MONITORING PROGRAM REPORT FORM FOR A MAJOR SPILL
 {Attn: [Permitting, Compliance and Enforcement Program] Fax No. 404-362-2691}

Name of City/County:	<u>Stone Mountain/DeKalb</u>	Spill Amount (G 52600	
Date Spill Occurred:	<u>4/5/2017</u>	Date Spill Reported to EPD:	<u>4/5/2017</u>
Spill Location:	<u>1440 Sowell Estate</u>	Date of Public Notice (PN):	<u>4/20/2017</u>
	<u>Stone Mountain, GA 30083</u>		
Name of Receiving Stream Affected:	<u>South Fork Peachtree Creek</u>		
Upstream Sampling Location:	<u>Above Spill (yds): 652</u>	Written Report Submitted to EPD:	Yes
Downstream Sampling Location:	<u>Below Spill(yds): 755</u>	Copy of PN Submitted to EPD:	No

		ABOVE				BELOW			
	DATE	DO	TEMP	pH	#/100mL Fecal Coliform	DO	TEMP	pH	#/100mL Fecal Coliform
DAY 1	4/6/2017	9.0	14.1	6.7	4,100	9.1	14.2	6.8	3,000
DAY 2	4/7/2017	8.2	11.9	7.1	480	8.1	11.7	7.1	2,000
DAY 3	4/8/2017	8.7	11.8	7.0	270	9.0	11.5	7.0	570
DAY 4	4/9/2017	8.8	12.8	7.1	570	9.1	12.2	7.2	500
DAY 5	4/10/2017	9.1	14.1	7.1	280	9.2	14.0	7.2	370
DAY 6	4/11/2017	9.2	15.8	7.2	530	9.4	15.5	7.2	340
DAY 7	4/12/2017	7.4	17.0	7.4	570	9.4	16.4	7.4	340
WEEK 1 Geometric Mean:					600				
WEEK 2	4/19/2017	8.0	18.2	7.0	16,000	8.0	18.4	7.0	10,000
WEEK 3	4/24/2017	8.1	15.3	7.2	4,900	8.6	15.4	7.1	909
WEEK 4	5/1/2017								
Month 1 Geometric Mean:(Use all 10 data points)									
Month 3									
WEEK 1	6/5/2017								
WEEK 2	6/12/2017								
WEEK 3	6/19/2017								
WEEK 4	6/26/2017								
MONTH 12									
WEEK 1	4/2/2018								
WEEK 2	4/9/2018								
WEEK 3	4/16/2018								
WEEK 4	4/23/2018								
MONTH 12 Geometric Mean:									

4220 International Parkway, Suite 101
 Atlanta, Georgia 30354
 404/362/2680
 FAX 404/362/2691

1440 Sowell Estate



April 11, 2017

- DEKALB Lift Stations
- ATLANTA Sewer Manholes
- LATERAL Sewer Mains
- PRIVATE Unverified Sewer Manholes
- Flow Arrows Unverified Sewer Mains
- Force Mains Private Manholes
- Private Sewer mains
- Unverified Private Manholes
- Unverified Private Sewer Mains
- manhole Numbers
- Flow Arrows
- Force Mains
- Lift Stations
- Air Valves
- District
- Land_Lot
- TaxParcel



Bloomfield Township, MI Esri, Inc.

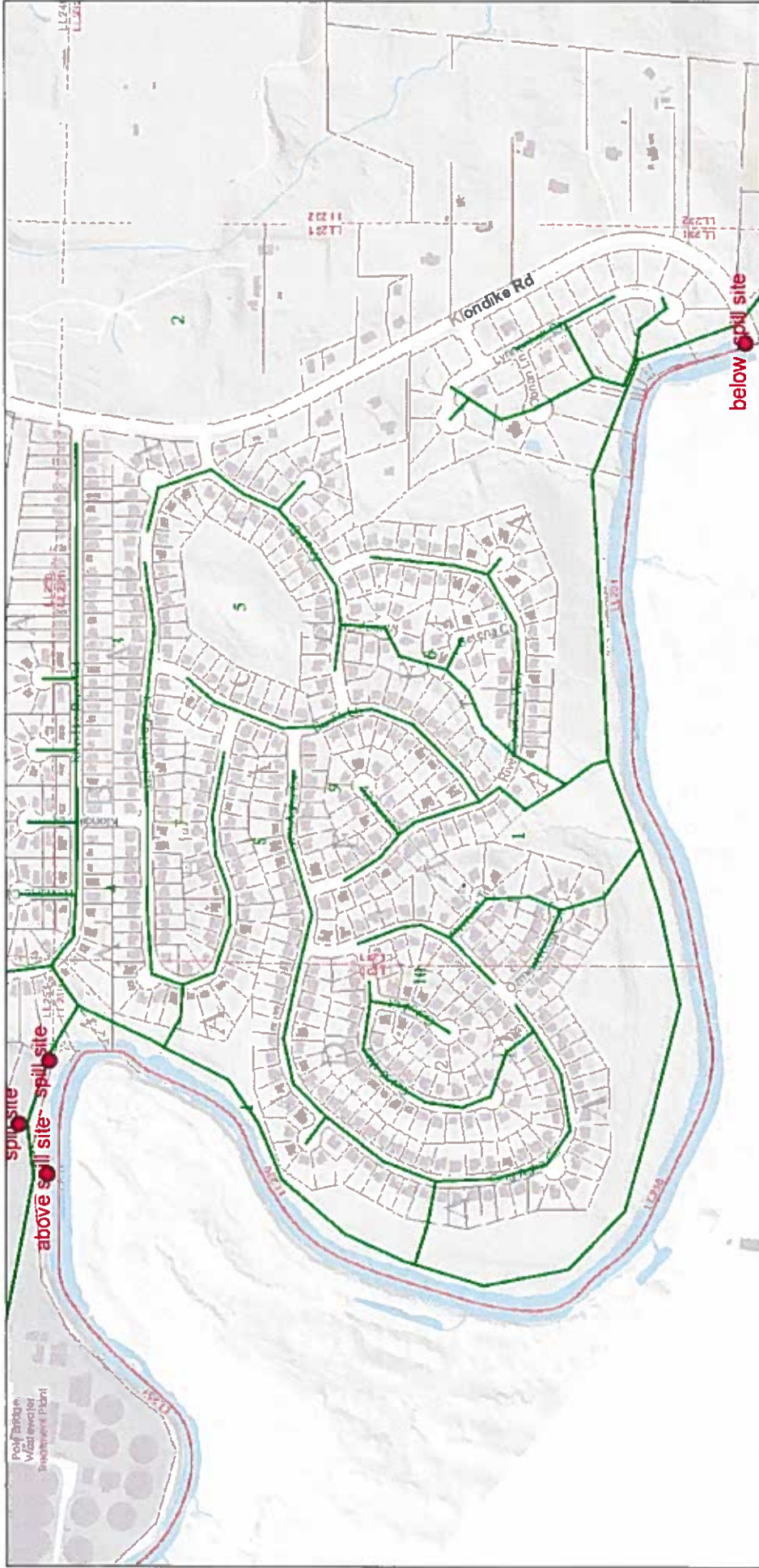
STREAM MONITORING PROGRAM REPORT FORM FOR A MAJOR SPILL
 {Attn: [Permitting, Compliance and Enforcement Program] Fax No. 404-362-2691}

Name of City/County:	<u>Decatur/DeKalb</u>	Spill Amount (Gals)	<u>62150</u>
Date Spill Occurred:	<u>3/31/2017</u>	Date Spill Reported to EPD:	<u>3/31/2017</u>
Spill Location:	<u>4664 Flat Bridge Road at South River</u>	Date of Public Notice (PN):	<u>4/13/2017</u>
	<u>Lithonia GA 30038</u>		
Name of Receiving Stream Affected:	<u>South River</u>		
Upstream Sampling Location:	<u>Above Spill (yds): 183</u>	Written Report Submitted to EPD:	<u>Yes</u>
Downstream Sampling Location:	<u>Below Spill(yds): 1860</u>	Copy of PN Submitted to EPD:	<u>No</u>

		ABOVE				BELOW			
	DATE	DO	TEMP	pH	#/100mL Fecal Coliform	DO	TEMP	pH	#/100mL Fecal Coliform
DAY 1	4/3/2017	7.6	18.7	7.2	340	6.1	18.4	6.1	470
DAY 2	4/4/2017	7.6	18.0	6.7	5,200	7.1	17.4	6.3	2,700
DAY 3	4/5/2017	6.7	19.2	7.4	2,400	7.9	18.5	7.2	3,800
DAY 4	4/6/2017	6.1	15.8	6.5	20,000	7.3	16.5	6.1	30,000
DAY 5	4/7/2017	9.2	14.7	7.0	24,000	9.1	14.5	7.0	27,000
DAY 6	4/8/2017	8.2	14.3	7.1	2,500	7.5	14.4	7.3	1,800
DAY 7	4/9/2017	7.8	14.4	7.2	2,000	8.2	14.3	7.2	1,100
WEEK 1 Geometric Mean:					3,700				
WEEK 2	4/10/2017	7.8	15.8	7.4	2,100	7.6	15.7	7.2	2,300
WEEK 3	4/17/2017	7.4	19.1	7.4	110	5.7	19.1	7.5	100
WEEK 4	4/24/2017	6.4	18.0	7.7	26,000	6.0	18.1	7.7	42,000
Month 1 Geometric Mean:(Use all 10 data points)					3,000				
Month 3									
WEEK 1	6/5/2017								
WEEK 2	6/12/2017								
WEEK 3	6/19/2017								
WEEK 4	6/26/2017								
MONTH 12									
WEEK 1	3/5/2018								
WEEK 2	3/12/2018								
WEEK 3	3/19/2018								
WEEK 4	3/26/2018								
MONTH 12 Geometric Mean:									

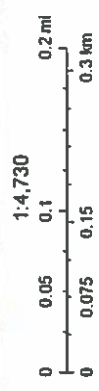
4220 International Parkway, Suite 101
 Atlanta, Georgia 30354
 404/362/2680
 FAX 404/362/2691

4664 Flat bridge Rd SOUTH River



April 4, 2017

- DEKALB
- ATLANTA
- LATERAL
- PRIVATE
- Flow Arrows
- Force Mains
- Lift Stations
- District
- Land_Lot
- Tax_Parcel



STREAM MONITORING PROGRAM REPORT FORM FOR A MAJOR SPILL
 {Attn: [Permitting, Compliance and Enforcement Program] Fax No. 404-362-2691}

Name of City/County:	<u>Decatur/DeKalb</u>	Spill Amount (Gals)	<u>62150</u>
Date Spill Occurred:	<u>3/31/2017</u>	Date Spill Reported to EPD:	<u>3/31/2017</u>
Spill Location:	<u>4664 Flat Bridge Road</u>	Date of Public Notice (PN):	<u>4/13/2017</u>
	<u>Lithonia GA 30038</u>		
Name of Receiving Stream Affected:	<u>Pole Bridge Creek</u>		
Upstream Sampling Location:	<u>Above Spill (yds):20</u>	Written Report Submitted to EPD:	<u>Yes</u>
Downstream Sampling Location:	<u>Below Spill(yds): 20</u>	Copy of PN Submitted to EPD:	<u>No</u>

	DATE	ABOVE				BELOW			
		DO	TEMP	pH	#/100mL Fecal Coliform	DO	TEMP	pH	#/100mL Fecal Coliform
DAY 1	3/31/2017	5.9	19.3	7.6	6,000	6.9	19.0	7.3	14,000
DAY 2	4/1/2017	6.4	15.9	7.3	450	7.3	16.0	7.2	1,400
DAY 3	4/2/2017	5.9	15.6	6.8	250	7.7	16.5	7.0	350
DAY 4	4/3/2017	7.3	18.5	7.0	520	7.3	17.8	7.2	550
DAY 5	4/4/2017	6.0	17.3	6.8	1,200	7.7	17.1	6.8	9,000
DAY 6	4/5/2017	8.5	17.2	7.3	1,600	8.4	17.1	7.1	900
DAY 7	4/6/2017	7.6	15.4	6.1	4,200	5.6	15.0	6.6	5,400
WEEK 1 Geometric Mean:					1,200				
WEEK 2	4/10/2017	8.6	14.3	7.2	360	8.5	14.3	7.6	280
WEEK 3	4/17/2017	7.5	17.6	7.5	210	7.3	17.6	7.6	210
WEEK 4	4/24/2017	7.5	16.8	7.7	3,200	7.5	16.8	7.6	4,700
Month 1 Geometric Mean:(Use all 10 data points)					1,000				
Month 3									
WEEK 1	6/5/2017								
WEEK 2	6/12/2017								
WEEK 3	6/19/2017								
WEEK 4	6/26/2017								
MONTH 12									
WEEK 1	3/5/2018								
WEEK 2	3/12/2018								
WEEK 3	3/19/2018								
WEEK 4	3/26/2018								
MONTH 12 Geometric Mean:									

4220 International Parkway, Suite 101
 Atlanta, Georgia 30354
 404/362/2680
 FAX 404/362/2691

STREAM MONITORING PROGRAM REPORT FORM FOR A MAJOR SPILL
 {Attn: [Permitting, Compliance and Enforcement Program] Fax No. 404-362-2691}

Name of City/County: Decatur/DeKalb Spill Amount (Gals) 76325
 Date Spill Occurred: 3/30/2017 Date Spill Reported to EPD: 3/31/2017
 Spill Location: 3127 Buford Hwy Date of Public Notice (PN): 4/13/2017
Atlanta GA 30329
 Name of Receiving Stream Affected: North Fork Peachtree Creek
 Upstream Sampling Location: Above Spill (yds): 1371 Written Report Submitted to EPD: Yes
 Downstream Sampling Location: Below Spill(yds): 473 Copy of PN Submitted to EPD: No

		ABOVE				BELOW			
	DATE	DO	TEMP	pH	#/100mL Fecal Coliform	DO	TEMP	pH	#/100mL Fecal Coliform
DAY 1	3/31/2017	6.3	18.1	7.1	7,000	6.3	18.1	7.1	3,400
DAY 2	4/1/2017	5.3	15.9	7.1	1,100	5.2	16.1	7.3	1,100
DAY 3	4/2/2017	5.5	15.7	7.3	230	5.7	16.0	7.3	300
DAY 4	4/3/2017	6.8	18.2	7.1	1,800	5.4	18.5	7.3	1,400
DAY 5	4/4/2017	7.5	17.5	7.5	4,600	7.2	17.9	7.7	5,100
DAY 6	4/5/2017	6.8	17.3	6.1	745	6.1	17.2	6.1	3,600
DAY 7	4/6/2017	9.2	15.1	6.8	2,800	9.0	15.1	6.8	4,400
WEEK 1 Geometric Mean:					1,600				
WEEK 2	4/12/2017	6.6	17.9	7.0	3,600	7.0	18.3	7.2	2,000
WEEK 3	4/19/2017	6.1	18.3	7.8	38,000	6.4	19.1	8.0	20,000
WEEK 4	4/26/2017	6.4	17.7	7.6	9,000	6.1	18.0	7.6	3,000
Month 1 Geometric Mean:(Use all 10 data points)					2,900				
Month 3									
WEEK 1	6/5/2017								
WEEK 2	6/12/2017								
WEEK 3	6/19/2017								
WEEK 4	6/26/2017								
MONTH 12									
WEEK 1	3/5/2018								
WEEK 2	3/12/2018								
WEEK 3	3/19/2018								
WEEK 4	3/26/2018								
MONTH 12 Geometric Mean:									

4220 International Parkway, Suite 101
 Atlanta, Georgia 30354
 404/362/2680
 FAX 404/362/2691

STREAM MONITORING PROGRAM REPORT FORM FOR A MAJOR SPILL
 {Attn: [Permitting, Compliance and Enforcement Program] Fax No. 404-362-2691}

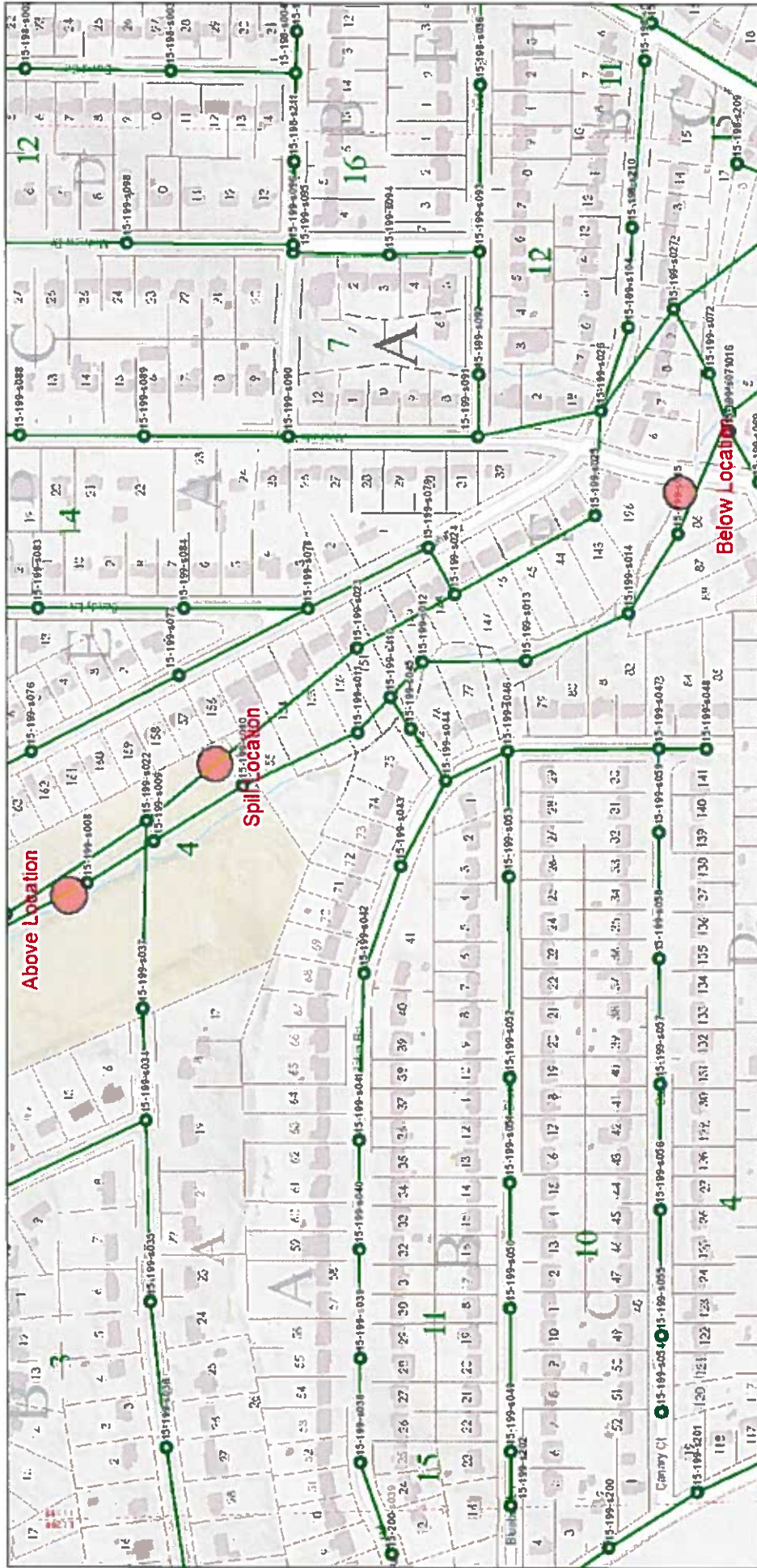
Name of City/County:	<u>Decatur/DeKalb</u>	Spill Amount (Gals)	<u>10050</u>
Date Spill Occurred:	<u>3/28/2017</u>	Date Spill Reported to EPD:	<u>3/28/2017</u>
Spill Location:	<u>3181 Midway Road</u>	Date of Public Notice (PN):	<u>4/6/2017</u>
	<u>Decatur GA</u>		
Name of Receiving Stream Affected:	<u>Cobbs Creek</u>		
Upstream Sampling Location:	<u>Above Spill (yds): 134</u>	Written Report Submitted to EPD:	<u>Yes</u>
Downstream Sampling Location:	<u>Below Spill(yds): 526</u>	Copy of PN Submitted to EPD:	<u>No</u>

	DATE	ABOVE				BELOW			
		DO	TEMP	pH	#/100mL Fecal Coliform	DO	TEMP	pH	#/100mL Fecal Coliform
DAY 1	3/29/2017	7.4	16.2	6.8	550	5.8	16.2	6.8	6,000
DAY 2	3/30/2017	7.3	17.5	7.1	*	5.1	17.4	7.1	*
DAY 3	3/31/2017	6.5	16.6	6.7	5,800	5.1	16.8	7.0	5,300
DAY 4	4/1/2017	6.2	15.2	7.0	490	5.6	14.8	7.3	1,300
DAY 5	4/2/2017	6.3	15.0	7.3	1,200	6.3	14.8	7.1	510
DAY 6	4/3/2017	5.2	16.9	7.0	480	6.0	17.2	6.9	580
DAY 7	4/4/2017	7.3	16.3	7.0	530	6.8	16.4	6.9	2,000
WEEK 1 Geometric Mean:					900				
WEEK 2	4/14/2017	8.0	17.3	7.2	520	8.3	17.0	7.2	520
WEEK 3	4/20/2017	6.2	17.8	8.2	1,000	6.3	18.7	8.6	1,500
WEEK 4	4/28/2017	8.1	19.5	7.4	3,900	7.7	18.9	7.4	2,500
Month 1 Geometric Mean:(Use all 10 data points)					1,000				
Month 3									
WEEK 1	6/5/2017								
WEEK 2	6/12/2017								
WEEK 3	6/19/2017								
WEEK 4	6/26/2017								
MONTH 12									
WEEK 1	3/5/2018								
WEEK 2	3/12/2018								
WEEK 3	3/19/2018								
WEEK 4	3/26/2018								
MONTH 12 Geometric Mean:									

* LAB ERROR

4220 International Parkway, Suite 101
 Atlanta, Georgia 30354
 404/362/2680
 FAX 404/362/2691

3181 Midway Road



March 29, 2017

	DeKalb		LATERAL		District
	Atlanta		PRIVATE		Land_Lot
	Not in County		Flow Arrows		TaxParcel
	Private		Force Mains		Lift Stations
	DEKALB		Lift Stations		Air Valves
	ATLANTA				

Scale: 1:2,800
 0 0.0325 0.065 0.1 0.13 mi
 0 0.05 0.1 0.2 km

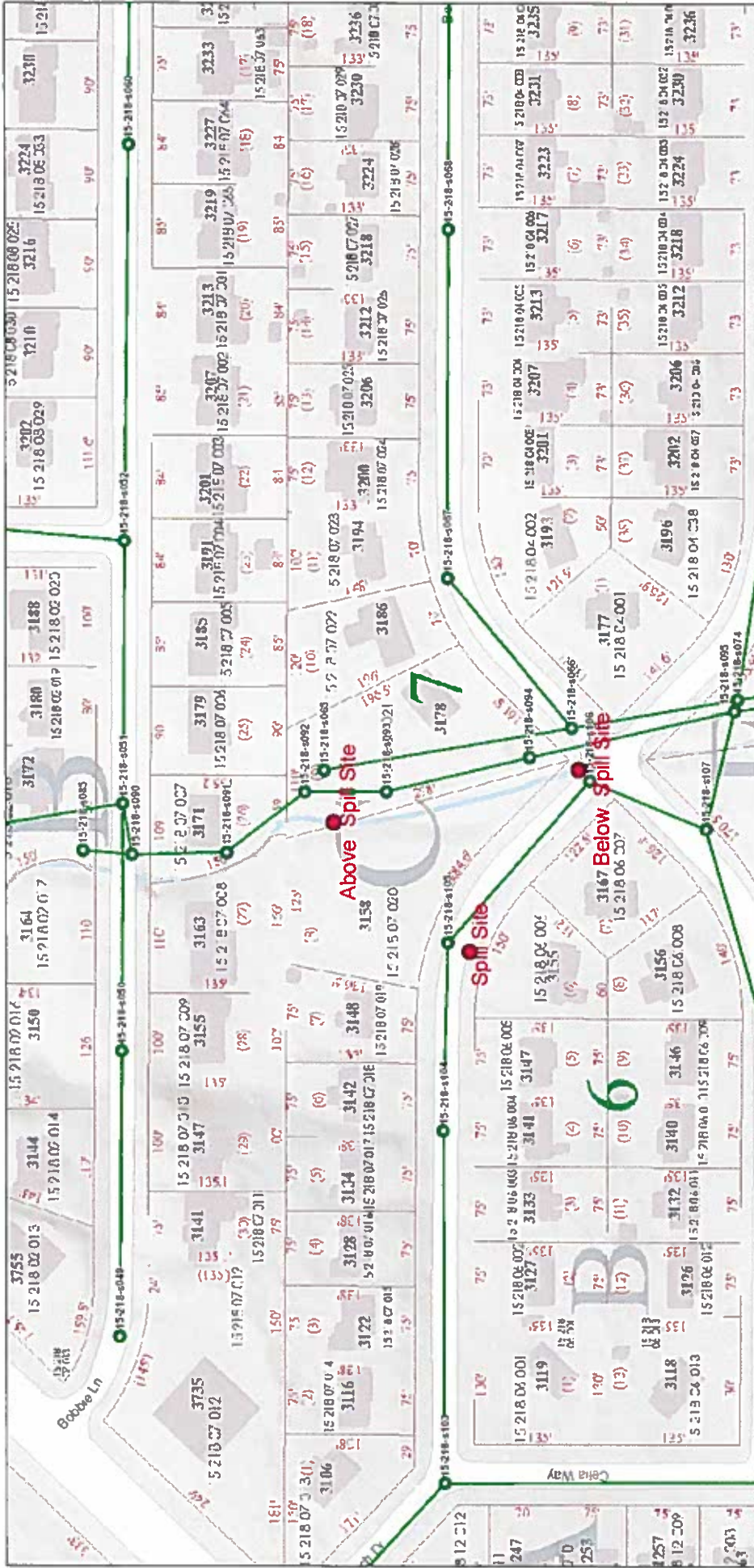
STREAM MONITORING PROGRAM REPORT FORM FOR A MAJOR SPILL
 {Attn: [Permitting, Compliance and Enforcement Program] Fax No. 404-362-2691}

Name of City/County:	<u>Decatur/DeKalb</u>	Spill Amount (Gals)	<u>347250</u>
Date Spill Occurred:	<u>3/14/2017</u>	Date Spill Reported to EPD:	<u>3/15/2017</u>
Spill Location:	<u>3158 Beech Drive</u>	Date of Public Notice (PN):	<u>3/30/2017</u>
	<u>Decatur GA</u>		
Name of Receiving Stream Affected:	<u>Cobbs Creek</u>		
Upstream Sampling Location:	<u>Above Spill (yds): 20</u>	Written Report Submitted to EPD:	Yes
Downstream Sampling Location:	<u>Below Spill(yds): 20</u>	Copy of PN Submitted to EPD:	No

	DATE	ABOVE				BELOW			
		DO	TEMP	pH	#/100mL Fecal Coliform	DO	TEMP	pH	#/100mL Fecal Coliform
DAY 1	3/15/2017	5.4	10.8	6.7	210	9.7	9.9	6.5	360
DAY 2	3/16/2017	6.6	7.7	6.8	200	8.5	7.4	6.9	130
DAY 3	3/17/2017	7.3	9.9	7.2	210	8.5	9.6	7.2	140
DAY 4	3/18/2017	8.3	12.5	6.6	4,300	7.2	12.7	6.9	4,300
DAY 5	3/19/2017	6.0	12.0	6.3	110	7.0	11.2	6.6	170
DAY 6	3/20/2017	9.5	11.1	6.9	520	9.2	11.0	7.2	470
DAY 7	3/21/2017	8.8	14.0	7.0	280	8.7	14.4	6.6	230
WEEK 1 Geometric Mean:					300				
WEEK 2	3/31/2017	7.3	17.0	7.0	1,300	7.0	17.3	7.1	>60000
WEEK 3	4/3/2017	6.7	17.4	6.7	240	6.9	17.3	7.1	900
WEEK 4	4/11/2017	8.7	15.6	6.9	290	8.2	15.7	6.9	480
Month 1 Geometric Mean:(Use all 10 data points)					400				
Month 3									
WEEK 1	5/1/2017								
WEEK 2	5/8/2017								
WEEK 3	5/15/2017								
WEEK 4	5/22/2017								
MONTH 12									
WEEK 1	3/5/2018								
WEEK 2	3/12/2018								
WEEK 3	3/19/2018								
WEEK 4	3/26/2018								
MONTH 12 Geometric Mean:									

4220 International Parkway, Suite 101
 Atlanta, Georgia 30354
 404/362/2680
 FAX 404/362/2691

3158 Beech Drive



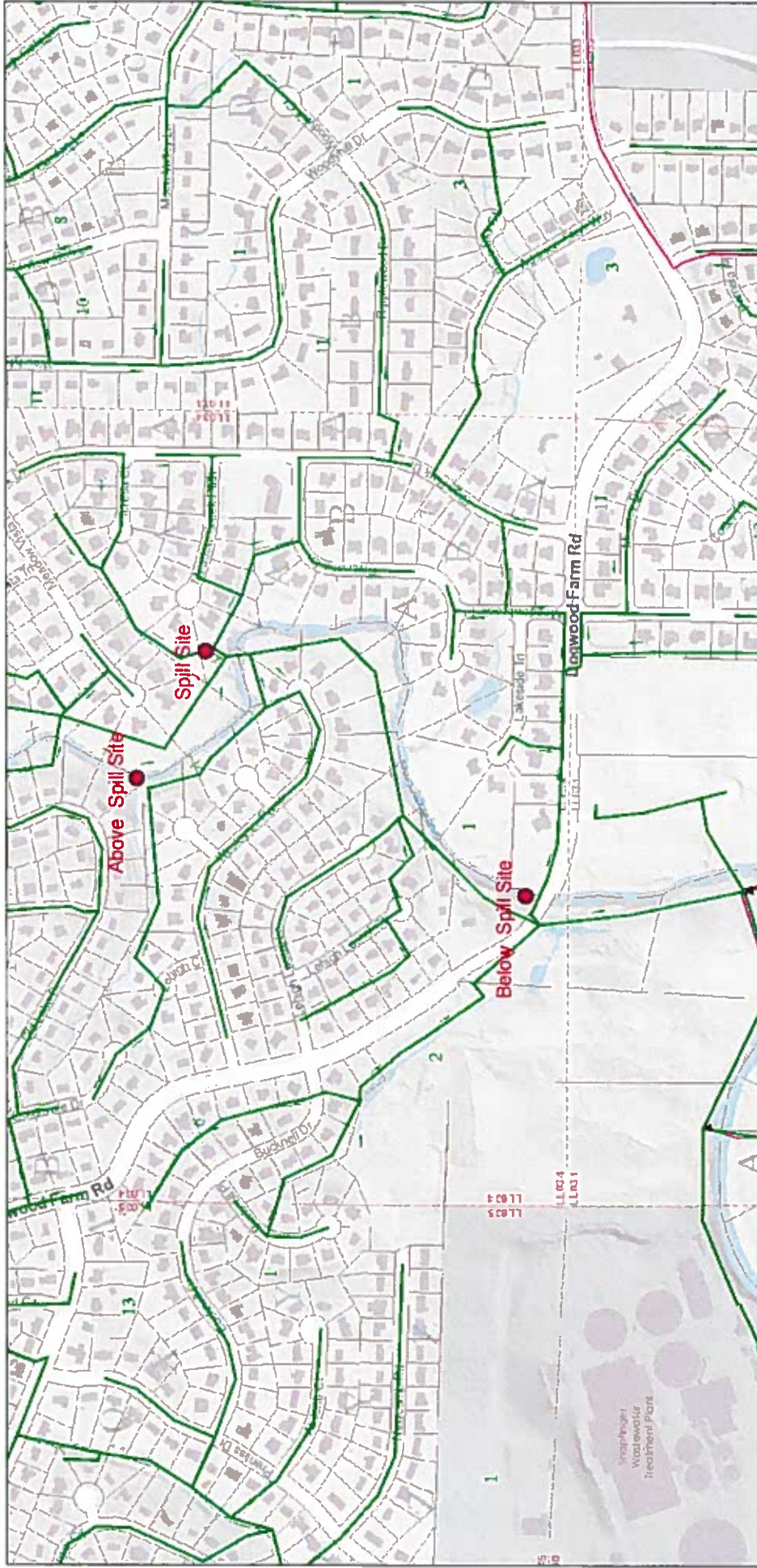
STREAM MONITORING PROGRAM REPORT FORM FOR A MAJOR SPILL
 {Attn: [Permitting, Compliance and Enforcement Program] Fax No. 404-362-2691}

Name of City/County:	<u>Decatur/ DeKalb</u>	Spill Amount (Gals)	<u>89700</u>
Date Spill Occurred:	<u>1/23/2017</u>	Date Spill Reported to EPD:	<u>1/24/2017</u>
Spill Location:	<u>4557 Meadow Creek Path</u>	Date of Public Notice (PN):	<u>2/2/2017</u>
	<u>Lithonia GA 30030</u>		
Name of Receiving Stream Affected:	<u>Snapfinger Creek</u>		
Upstream Sampling Location:	<u>Above Spill (yds): 132</u>	Written Report Submitted to EPD:	Yes
Downstream Sampling Location:	<u>Below Spill(yds): 681</u>	Copy of PN Submitted to EPD:	No

	DATE	ABOVE				BELOW			
		DO	TEMP	pH	#/100mL Fecal Coliform	DO	TEMP	pH	#/100mL Fecal Coliform
DAY 1	1/24/2017	8.3	14.7	9.3	200	9.3	12.6	9.6	4,800
DAY 2	1/25/2017	9.3	11.2	7.5	4,100	10.3	10.6	7.5	5,800
DAY 3	1/26/2017	8.7	12.2	7.2	580	9.2	12.5	7.0	1,600
DAY 4	1/27/2017	10.5	9.1	6.8	2,200	10.4	9.4	6.7	1,300
DAY 5	1/28/2017	10.3	6.3	7.1	20	10.3	7.5	7.3	200
DAY 6	1/29/2017	10.0	6.5	7.3	10,000	10.4	7.0	7.3	1,500
DAY 7	1/30/2017	10.0	6.1	7.1	80	10.7	6.6	7.5	1,500
WEEK 1 Geometric Mean:					600				
WEEK 2	2/7/2017	9.0	12.2	6.7	70	9.5	11.1	6.9	1,700
WEEK 3	2/14/2017	11.2	9.8	7.4	570	10.4	10.5	7.1	410
WEEK 4	2/21/2017	11.0	13.4	7.4	609	10.9	13.6	7.5	470
Month 1 Geometric Mean:(Use all 10 data points)					500				
Month 3									
WEEK 1	4/4/2017	7.0	16.8	6.7	3,000	5.1	16.7	6.8	3,000
WEEK 2	4/10/2017	8.0	14.1	7.5	8,000	8.5	14.1	7.3	12,000
WEEK 3	4/18/2017	6.9	18.1	7.1	5,300	7.1	18.1	7.3	380
WEEK 4	4/25/2017	7.4	16.5	7.7	4,100	7.7	16.4	7.2	4,300
					4,800				
MONTH 12									
WEEK 1	1/1/2018								
WEEK 2	1/8/2018								
WEEK 3	1/15/2018								
WEEK 4	1/22/2018								
MONTH 12 Geometric Mean:									

4220 International Parkway, Suite 101
 Atlanta, Georgia 30354
 404/362/2680
 FAX 404/362/2691

4557 Meadow Creek Path



January 24, 2017

- DEKALB
- ATLANTA
- LATERAL
- PRIVATE
- Flow Arrows
- Force Mains
- Lift Stations
- District
- Land_Lot
- TaxParcel

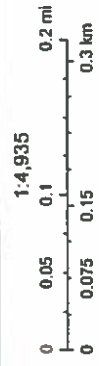
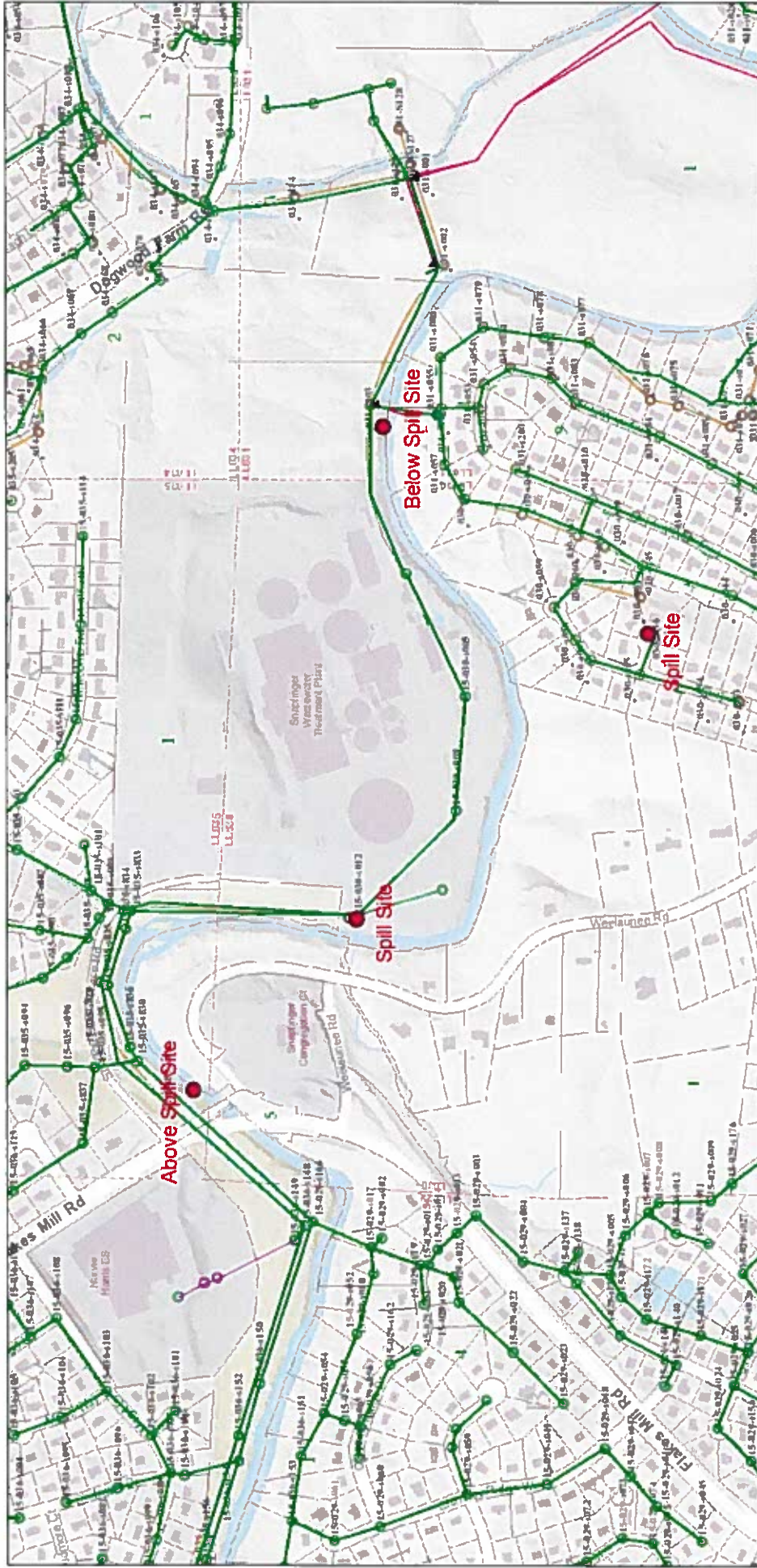
STREAM MONITORING PROGRAM REPORT FORM FOR A MAJOR SPILL
 {Attn: [Permitting, Compliance and Enforcement Program] Fax No. 404-362-2691}

Name of City/County:	<u>Decatur/ DeKalb</u>	Spill Amount (Gals)	<u>33,550</u>
Date Spill Occurred:	<u>1/23/2017</u>	Date Spill Reported to EPD:	<u>1/23/2017</u>
Spill Location:	<u>4124 Flakes Mill Rd</u>	Date of Public Notice (PN):	<u>2/2/2017</u>
	<u>Decatur GA 30034</u>		
Name of Receiving Stream Affected:	<u>South River</u>		
Upstream Sampling Location:	<u>Above Spill (yds): 444</u>	Written Report Submitted to EPD:	Yes
Downstream Sampling Location:	<u>Below Spill(yds): 904</u>	Copy of PN Submitted to EPD:	No

		ABOVE				BELOW			
	DATE	DO	TEMP	pH	#/100mL Fecal Coliform	DO	TEMP	pH	#/100mL Fecal Coliform
DAY 1	1/24/2017	8.4	11.9	7.3	4,600	8.7	12.8	6.4	4,600
DAY 2	1/25/2017	9.2	11.4	7.4	3,900	8.7	12.5	7.4	1,800
DAY 3	1/26/2017	8.3	12.8	7.2	2,900	8.8	13.9	6.5	4,000
DAY 4	1/27/2017	8.8	9.7	7.4	4,100	9.2	10.9	6.6	3,100
DAY 5	1/28/2017	9.3	7.9	7.1	4,500	9.3	11.2	7.0	Lab Error
DAY 6	1/29/2017	9.6	7.2	7.0	6,000	9.5	9.4	6.6	1,000
DAY 7	1/30/2017				Missed Sample				Missed Sample
WEEK 1 Geometric Mean:					4,200				
WEEK 2	2/2/2017	9.4	10.9	7.1	3,000	8.6	12.0	6.5	2,500
WEEK 3	2/6/2017	9.6	8.8	6.8	5,700	6.6	10.9	4.2	5,100
WEEK 4	2/13/2017	8.5	12.3	7.4	5,900	8.5	14.8	6.7	3,300
Month 1 Geometric Mean:(Use all 10 data points)					4,400				
Month 3									
WEEK 1	4/3/2017	6.6	17.8	7.3	1,900	6.6	18.4	7.1	1,600
WEEK 2	4/12/2017	9.0	16.7	7.1	490	9.2	17.4	6.7	300
WEEK 3	4/17/2017	6.8	18.1	7.7	230	6.5	18.8	7.4	180
WEEK 4	4/24/2017	6.3	17.5	7.5	19,000	6.9	18.1	7.1	4,600
					1,400				
MONTH 12									
WEEK 1	1/1/2018								
WEEK 2	1/8/2018								
WEEK 3	1/15/2018								
WEEK 4	1/22/2018								
MONTH 12 Geometric Mean:									

4220 International Parkway, Suite 101
 Atlanta, Georgia 30354
 404/362/2680
 FAX 404/362/2691

4124 Flakes Mill Rd



April 14, 2017

- DEKALB
- ATLANTA
- LATERAL
- PRIVATE
- Flow Arrows
- Force Mains
- Lift Stations
- Sewer Manholes
- Sewer Mains
- Unverified Sewer Manholes
- Unverified Sewer Mains
- Private Manholes
- Private Sewer mains
- Unverified Private Manholes
- Unverified Private Sewer Mains
- manhole Numbers
- Flow Arrows
- Force Mains
- Lift Stations
- Air Valves
- District
- Land Lot
- Tax Parcel

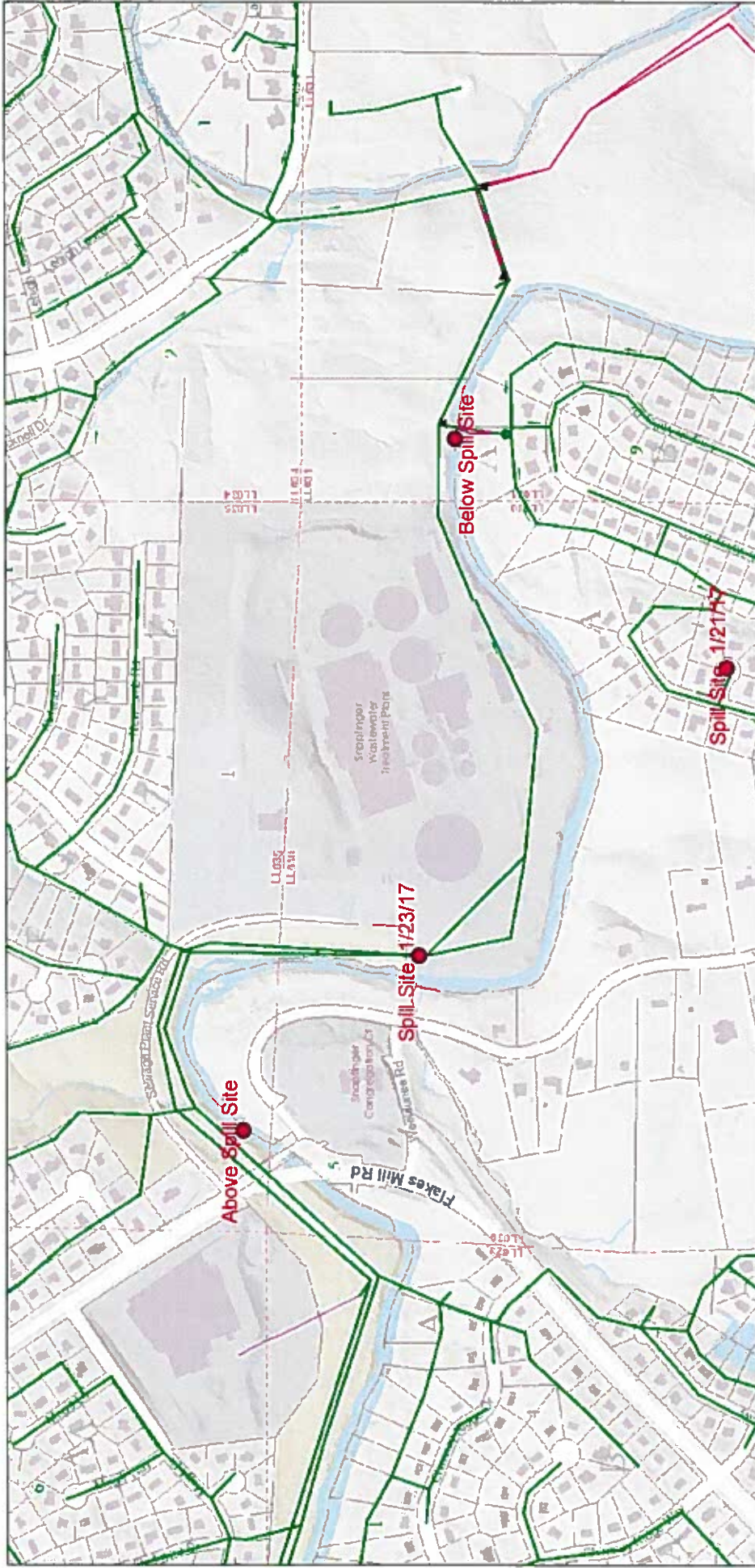
STREAM MONITORING PROGRAM REPORT FORM FOR A MAJOR SPILL
 {Attn: [Permitting, Compliance and Enforcement Program] Fax No. 404-362-2691}

Name of City/County:	<u>Decatur/ DeKalb</u>	Spill Amount (Gals)	<u>110550</u>
Date Spill Occurred:	<u>1/21/2017</u>	Date Spill Reported to EPD:	<u>1/22/2017</u>
Spill Location:	<u>4124 Flakes Mill Rd</u>	Date of Public Notice (PN):	<u>2/2/2017</u>
	<u>Decatur GA 30034</u>		
Name of Receiving Stream Affected:	<u>South River</u>		
Upstream Sampling Location:	<u>Above Spill (yds): 1277</u>	Written Report Submitted to EPD:	Yes
Downstream Sampling Location:	<u>Below Spill(yds): 20</u>	Copy of PN Submitted to EPD:	No

	DATE	ABOVE				BELOW			
		DO	TEMP	pH	#/100mL Fecal Coliform	DO	TEMP	pH	#/100mL Fecal Coliform
DAY 1	1/23/2017	7.9	13.3	7.0	23,000	8.2	13.5	7.1	17,000
DAY 2	1/24/2017	8.4	11.9	7.3	4,600	8.7	12.8	6.4	4,600
DAY 3	1/25/2017	9.2	11.4	7.4	3,900	8.7	12.5	7.4	1,800
DAY 4	1/26/2017	8.3	12.8	7.2	2,900	8.8	13.9	6.5	4,000
DAY 5	1/27/2017	8.8	9.7	7.4	4,100	9.2	10.9	6.6	3,100
DAY 6	1/28/2017	9.3	7.9	7.7	4,500	9.3	11.2	7.0	Lab Error
DAY 7	1/29/2017	9.6	7.2	7.0	6,000	9.5	9.4	6.6	1,000
WEEK 1 Geometric Mean:					5,400				
WEEK 2	2/2/2017	9.4	10.9	7.1	3,000	8.6	12.0	6.5	2,500
WEEK 3	2/6/2017	9.6	8.8	6.8	5,700	6.6	10.9	4.2	5,100
WEEK 4	2/13/2017	8.5	12.3	7.4	5,900	8.5	14.8	6.7	3,300
Month 1 Geometric Mean:(Use all 10 data points)					5,200				
Month 3									
WEEK 1	4/3/2017	6.6	17.8	7.3	1,900	6.6	18.4	7.1	1,600
WEEK 2	4/12/2017	9.0	16.7	7.1	490	9.2	17.4	6.7	300
WEEK 3	4/17/2017	6.8	18.1	7.7	230	6.5	18.8	7.4	180
WEEK 4	4/24/2017	6.3	17.5	7.5	19,000	6.9	18.1	7.1	4,600
					1,400				
MONTH 12									
WEEK 1	1/1/2018								
WEEK 2	1/8/2018								
WEEK 3	1/15/2018								
WEEK 4	1/22/2018								
MONTH 12 Geometric Mean:									

4220 International Parkway, Suite 101
 Atlanta, Georgia 30354
 404/362/2680
 FAX 404/362/2691

4124 Flakes Mill Rd



January 26, 2017

- DEKALB
- ATLANTA
- LATERAL
- PRIVATE
- Flow Arrows
- Force Mains
- Lift Stations
- District
- Land Lot
- Tax Parcel

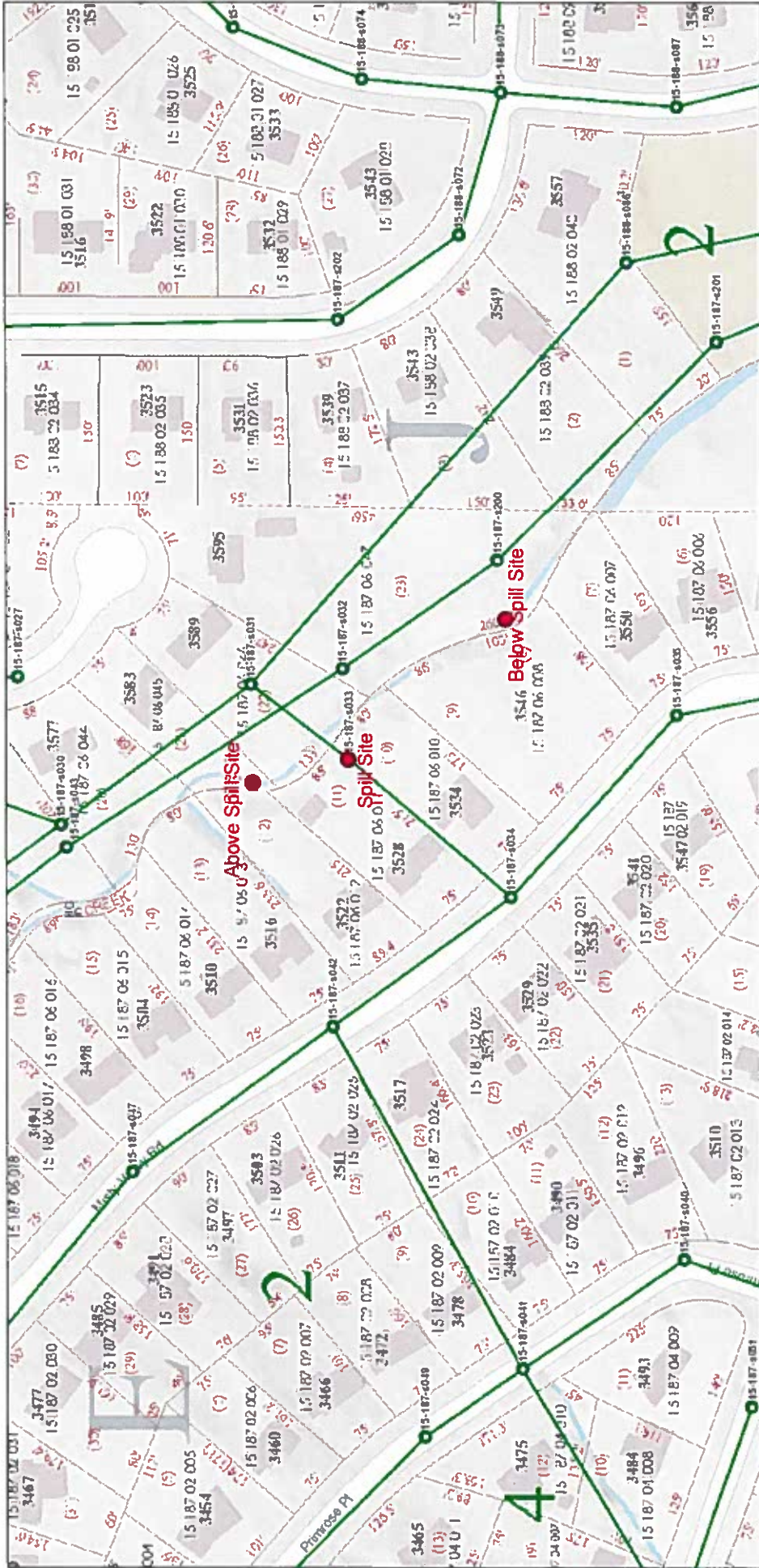
STREAM MONITORING PROGRAM REPORT FORM FOR A MAJOR SPILL
 {Attn: [Permitting, Compliance and Enforcement Program] Fax No. 404-362-2691}

Name of City/County:	<u>Decatur/ DeKalb</u>	Spill Amount (Gals)	<u>174,000</u>
Date Spill Occurred:	<u>1/21/2017</u>	Date Spill Reported to EPD:	<u>1/22/2017</u>
Spill Location:	<u>3528 Misty Valley Rd</u>	Date of Public Notice (PN):	<u>2/2/2017</u>
	<u>Decatur GA 30032</u>		
Name of Receiving Stream Affected:	<u>Cobbs Creek</u>		
Upstream Sampling Location:	<u>Above Spill (yds): 20</u>	Written Report Submitted to EPD:	Yes
Downstream Sampling Location:	<u>Below Spill(yds): 90</u>	Copy of PN Submitted to EPD:	No

	DATE	ABOVE				BELOW			
		DO	TEMP	pH	#/100mL Fecal Coliform	DO	TEMP	pH	#/100mL Fecal Coliform
DAY 1	1/23/2017	8.8	12.5	7.8	3,900	8.7	12.7	7.5	5,400
DAY 2	1/24/2017	7.5	11.8	7.2	1,000	7.5	11.3	7.2	500
DAY 3	1/25//2017	8.9	10.6	6.9	450	9.7	10.5	7.0	390
DAY 4	1/26/2017	7.6	13.2	7.4	2,300	8.5	12.9	7.1	1,500
DAY 5	1/27/2017	9.3	9.5	7.8	300	9.8	8.6	7.7	190
DAY 6	1/28/2017	10.1	7.3	7.6	320	10.2	7.3	7.4	290
DAY 7	1/29/2017	9.9	6.9	7.4	22,000	10.2	6.9	7.3	240
WEEK 1 Geometric Mean:					1,400				
WEEK 2	1/31/2017	9.5	9.7	7.3	220	9.2	9.8	7.4	280
WEEK 3	2/10/2017	10.3	8.4	7.4	480	10.4	8.1	7.7	420
WEEK 4	2/14/2017	8.8	10.6	7.6	800	8.6	10.0	7.6	260
Month 1 Geometric Mean:(Use all 10 data points)					1,000				
Month 3									
WEEK 1	4/7/2017	8.3	12.5	7.3	1,700	8.1	12.5	7.3	2,900
WEEK 2	4/13/2017	8.5	17.2	7.1	4,700	8.5	16.8	7.3	4,100
WEEK 3	4/18/2017	9.3	17.8	6.7	240	8.9	18.2	6.9	1,200
WEEK 4	4/25/2017	9.3	16.1	7.3	360	8.8	16.4	7.7	591
					900				
MONTH 12									
WEEK 1	1/1/2018								
WEEK 2	1/8/2018								
WEEK 3	1/15/2018								
WEEK 4	1/22/2018								
MONTH 12 Geometric Mean:									

4220 International Parkway, Suite 101
 Atlanta, Georgia 30354
 404/362/2680
 FAX 404/362/2691

3528 Misty Valley Rd.



January 24, 2017

	DeKalb		Atlanta		Not in County		Private		DEKALB		ATLANTA
	LATERAL		PRIVATE		Flow Arrows		Force Mains		Lift Stations		Air Valves
	District		Land_Lot		Address		Tax/Parcel				

Scale: 1:1,183
 0 0.0125 0.025 0.045 0.05 mi
 0 0.0225 0.045 0.09 km

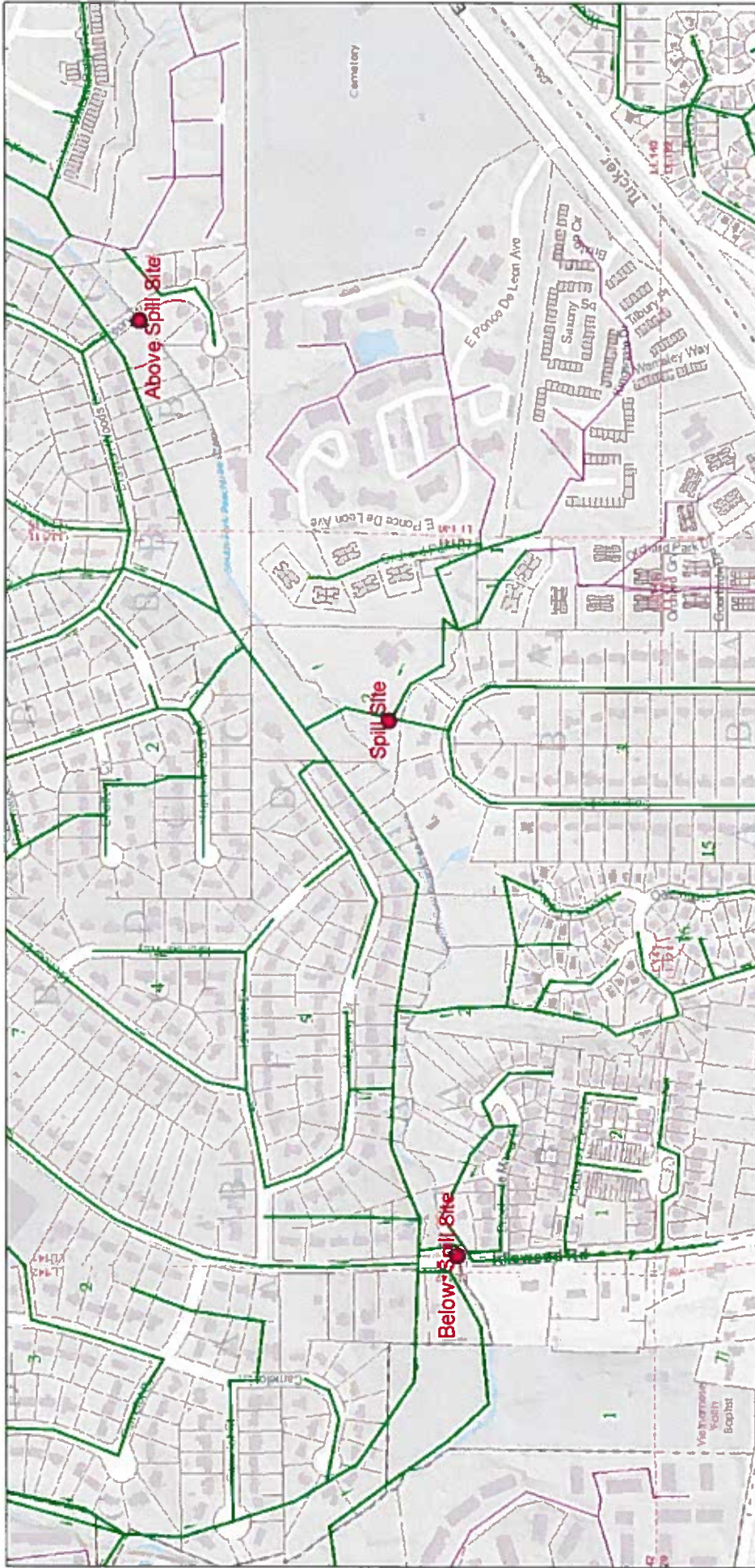
STREAM MONITORING PROGRAM REPORT FORM FOR A MAJOR SPILL
 {Attn: [Permitting, Compliance and Enforcement Program] Fax No. 404-362-2691}

Name of City/County:	<u>Stone Mountain/ DeKalb</u>	Spill Amount (Gals)	<u>14,150</u>
Date Spill Occurred:	<u>1/21/2017</u>	Date Spill Reported to EPD:	<u>1/21/2017</u>
Spill Location:	<u>1440 Sowell Estate</u>	Date of Public Notice (PN):	<u>2/2/2017</u>
	<u>Stone Mountain GA 30083</u>		
Name of Receiving Stream Affected:	<u>South Fork Peachtree Creek</u>		
Upstream Sampling Location:	<u>Above Spill (yds): 652</u>	Written Report Submitted to EPD:	<u>Yes</u>
Downstream Sampling Location:	<u>Below Spill(yds): 755</u>	Copy of PN Submitted to EPD:	<u>No</u>

	DATE	ABOVE				BELOW			
		DO	TEMP	pH	#/100mL Fecal Coliform	DO	TEMP	pH	#/100mL Fecal Coliform
DAY 1	1/22/2017	7.9	14.2	7.6	6,100	8.2	14.4	7.1	4,600
DAY 2	1/23/2017	8.5	12.8	7.6	9,000	8.5	12.9	7.8	4,100
DAY 3	1/24//2017	9.5	11.3	7.8	1,700	9.3	11.2	7.6	1,000
DAY 4	1/25/2017	9.0	10.4	7.0	1,100	9.1	10.1	7.1	390
DAY 5	1/26/2017	8.9	12.5	7.2	6,000	9.1	12.3	7.4	1,800
DAY 6	1/27/2017	9.6	8.2	7.5	360	9.5	8.7	7.7	240
DAY 7	1/28/2017	9.7	7.4	7.9	290	10.0	6.9	7.8	210
WEEK 1 Geometric Mean:					1,800				
WEEK 2	2/3/2017	9.0	11.2	7.5	290	8.9	12.0	7.6	400
WEEK 3	2/8/2017	8.1	13.7	6.4	1,200	8.5	13.8	5.9	480
WEEK 4	2/17/2017	10.6	9.4	7.8	570	10.6	10.8	7.5	410
Month 1 Geometric Mean:(Use all 10 data points)					1,300				
Month 3									
WEEK 1	4/6/2017	9.0	14.1	6.7	4,100	9.1	14.2	6.8	3,000
WEEK 2	4/12/2017	7.4	17.0	7.4	570	9.4	16.4	7.4	340
WEEK 3	4/19/2017	8.0	18.2	7.0	16,000	8.0	18.4	7.0	10,000
WEEK 4	4/24/2017	8.1	15.3	7.2	4,900	8.6	15.4	7.1	909
					3,700				
MONTH 12									
WEEK 1	1/1/2018								
WEEK 2	1/8/2018								
WEEK 3	1/15/2018								
WEEK 4	1/22/2018								
MONTH 12 Geometric Mean:									

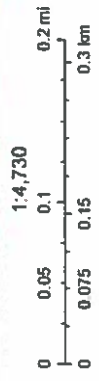
4220 International Parkway, Suite 101
 Atlanta, Georgia 30354
 404/362/2680
 FAX 404/362/2691

1440 Sowell Estate



January 26, 2017

- DEKALB
- ATLANTA
- LATERAL
- PRIVATE
- Flow Arrows
- Force Mains
- Lift Stations
- District
- Land_Lot
- TaxParcel



Bloomfield Township, MI, Est., Inc.

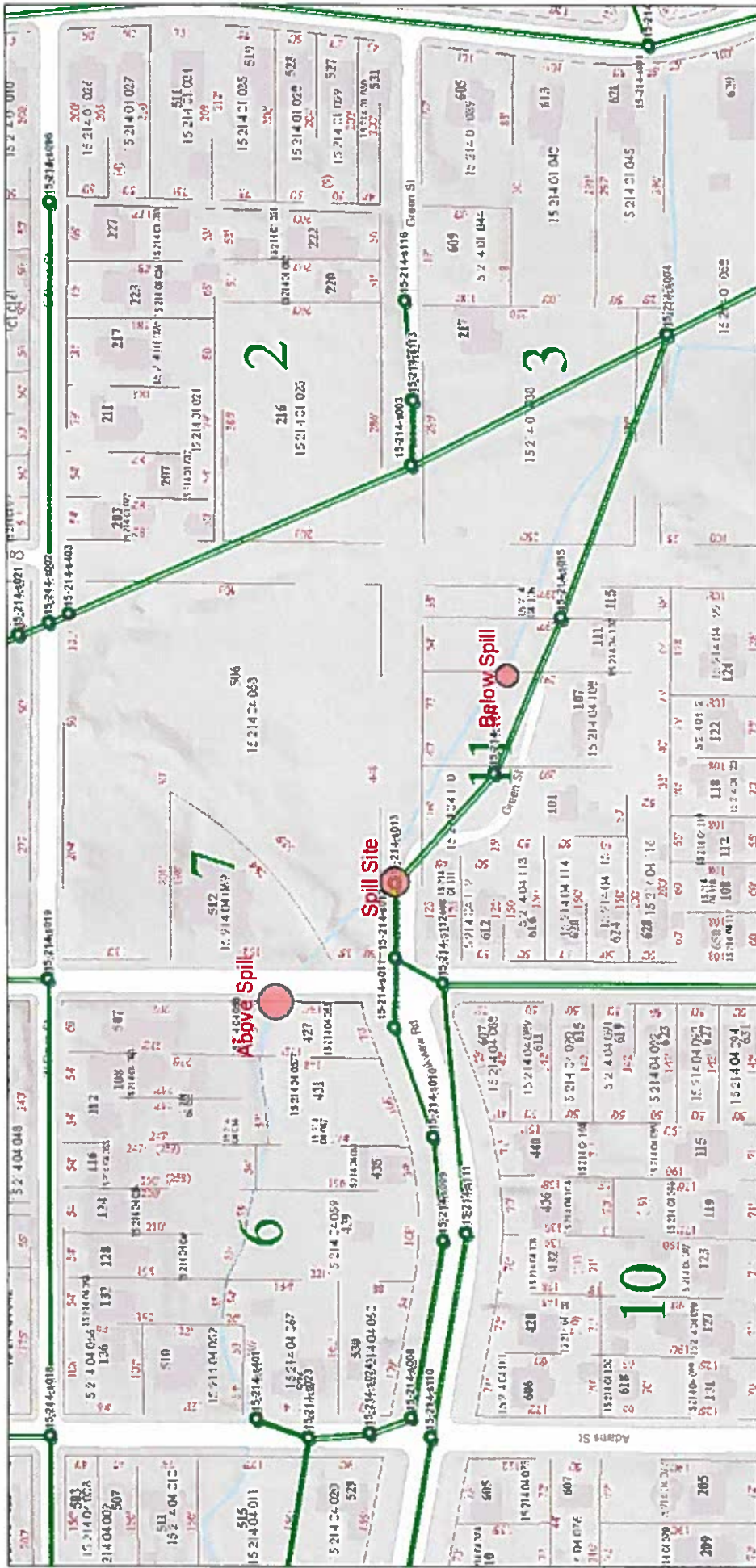
STREAM MONITORING PROGRAM REPORT FORM FOR A MAJOR SPILL
 {Attn: [Permitting, Compliance and Enforcement Program] Fax No. 404-362-2691}

Name of City/County:	<u>Decatur/ DeKalb</u>	Spill Amount (Gals)	<u>32,900</u>
Date Spill Occurred:	<u>1/21/2017</u>	Date Spill Reported to EPD:	<u>1/21/2017</u>
Spill Location:	<u>506 South McDonough Street</u>	Date of Public Notice (PN):	<u>2/2/2017</u>
	<u>Decatur GA 30030</u>		
Name of Receiving Stream Affected:	<u>Shoal Creek</u>		
Upstream Sampling Location:	<u>Above Spill (yds): 30</u>	Written Report Submitted to EPD:	<u>Yes</u>
Downstream Sampling Location:	<u>Below Spill(yds):120</u>	Copy of PN Submitted to EPD:	<u>No</u>

		ABOVE				BELOW			
	DATE	DO	TEMP	pH	#/100mL Fecal Coliform	DO	TEMP	pH	#/100mL Fecal Coliform
DAY 1	1/22/2017	7.5	14.5	7.0	4,500	7.9	14.9	6.8	4,700
DAY 2	1/23/2017	7.7	13.4	7.4	1,800	8.3	13.3	7.6	2,700
DAY 3	1/24/2017	8.5	12.5	7.1	1,400	9.0	12.6	7.3	1,700
DAY 4	1/25/2017	9.4	13.0	7.2	60	9.7	13.0	7.2	130
DAY 5	1/26/2017	7.8	13.4	7.1	3,800	8.9	13.5	7.1	1,900
DAY 6	1/27/2017	9.4	10.6	7.1	700	9.9	10.8	7.1	1,700
DAY 7	1/28/2017	8.9	9.1	7.2	2,600	9.9	8.0	7.9	1,500
WEEK 1 Geometric Mean:					1,200				
WEEK 2	1/31/2017	8.8	10.1	6.9	3,200	9.6	9.4	6.9	2,700
WEEK 3	2/10/2017	9.5	9.1	7.1	880	10.2	8.7	7.1	2,600
WEEK 4	2/15/2017	9.4	12.2	7.1	9,000	9.8	12.3	6.9	12,000
Month 1 Geometric Mean:(Use all 10 data points)					1,600				
Month 3									
WEEK 1	4/7/2017	8.0	12.9	6.9	2,600	8.1	12.3	6.8	2,400
WEEK 2	4/14/2017	8.1	16.7	6.3	800	8.2	16.8	6.7	700
WEEK 3	4/21/2017	7.0	18.6	7.2	3,600	7.2	18.5	6.9	3,300
WEEK 4	4/27/2017	7.0	17.5	7.2	3,000	8.1	17.8	7.3	2,400
					2,200				
MONTH 12									
WEEK 1	1/1/2018								
WEEK 2	1/8/2018								
WEEK 3	1/15/2018								
WEEK 4	1/22/2018								
MONTH 12 Geometric Mean:									

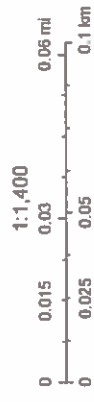
4220 International Parkway, Suite 101
 Atlanta, Georgia 30354
 404/362/2680
 FAX 404/362/2691

506 South McDonough



January 22, 2017

- DeKalb
- Atlanta
- Not in County
- Private
- DEKALB
- ATLANTA
- LATERAL
- PRIVATE
- Flow Arrows
- Force Mains
- Lift Stations
- Air Valves
- Sewer Manholes
- Sewer Mains
- Unverified Sewer Manholes
- Unverified Sewer Mains
- Private Manholes
- Private Sewer mains
- Unverified Private Manholes
- Unverified Private Sewer Mains
- manhole Numbers
- Flow Arrows
- Force Mains
- Lift Stations
- Air Valves
- District
- Land_Lot
- Address
- TaxParcel



STREAM MONITORING PROGRAM REPORT FORM FOR A MAJOR SPILL
 {Attn: [Permitting, Compliance and Enforcement Program] Fax No. 404-362-2691}

Name of City/County:	<u>Decatur/ DeKalb</u>	Spill Amount (Gals)	<u>12,400</u>
Date Spill Occurred:	<u>1/21/2017</u>	Date Spill Reported to EPD:	<u>1/22/2017</u>
Spill Location:	<u>1948 East Starmount Way</u>	Date of Public Notice (PN):	<u>2/2/2017</u>
	<u>Decatur GA 30032</u>		
Name of Receiving Stream Affected:	<u>Doolittle Creek</u>		
Upstream Sampling Location:	<u>Above Spill (yds): 71</u>	Written Report Submitted to EPD:	Yes
Downstream Sampling Location:	<u>Below Spill(yds): 302</u>	Copy of PN Submitted to EPD:	No

	DATE	ABOVE				BELOW			
		DO	TEMP	pH	#/100mL Fecal Coliform	DO	TEMP	pH	#/100mL Fecal Coliform
DAY 1	1/22/2017	8.7	14.3	7.4	<10	8.6	14.3	7.5	3,100
DAY 2	1/23/2017	9.0	11.2	7.7	2,600	8.9	11.3	7.8	1,400
DAY 3	1/24//2017	9.2	11.0	7.1	1,100	9.4	11.2	7.1	1,600
DAY 4	1/25/2017	9.4	10.8	7.0	530	9.3	11.1	7.0	900
DAY 5	1/26/2017	9.1	12.1	7.1	1,600	8.6	12.6	7.2	1,900
DAY 6	1/27/2017	10.5	8.9	7.0	1,100	10.5	9.3	7.1	800
DAY 7	1/28/2017	9.5	7.5	7.3	300	9.6	7.5	7.5	520
WEEK 1 Geometric Mean:					1,000				
WEEK 2	1/31/2017	9.8	8.3	6.4	500	9.8	8.4	7.5	1,200
WEEK 3	2/10/2017	10.2	8.5	7.1	250	9.9	9.1	7.1	220
WEEK 4	2/15/2017	10.1	12.4	7.4	10,000	9.2	12.8	7.5	18,000
Month 1 Geometric Mean:(Use all 10 data points)					1,000				
Month 3									
WEEK 1	4/6/2017	9.0	16.1	6.7	2,900	8.8	16.0	6.8	2,500
WEEK 2	4/12/2017	7.5	16.6	7.1	2,900	8.6	16.7	7.1	3,000
WEEK 3	4/21/2017	7.5	18.0	6.5	1,200	7.4	19.1	6.8	1,500
WEEK 4	4/27/2017	8.3	17.6	6.6	600	6.9	17.8	6.9	510
					1,600				
MONTH 12									
WEEK 1	1/1/2018								
WEEK 2	1/8/2018								
WEEK 3	1/15/2018								
WEEK 4	1/22/2018								
MONTH 12 Geometric Mean:									

4220 International Parkway, Suite 101
 Atlanta, Georgia 30354
 404/362/2680
 FAX 404/362/2691

1948 East Starmount Way

