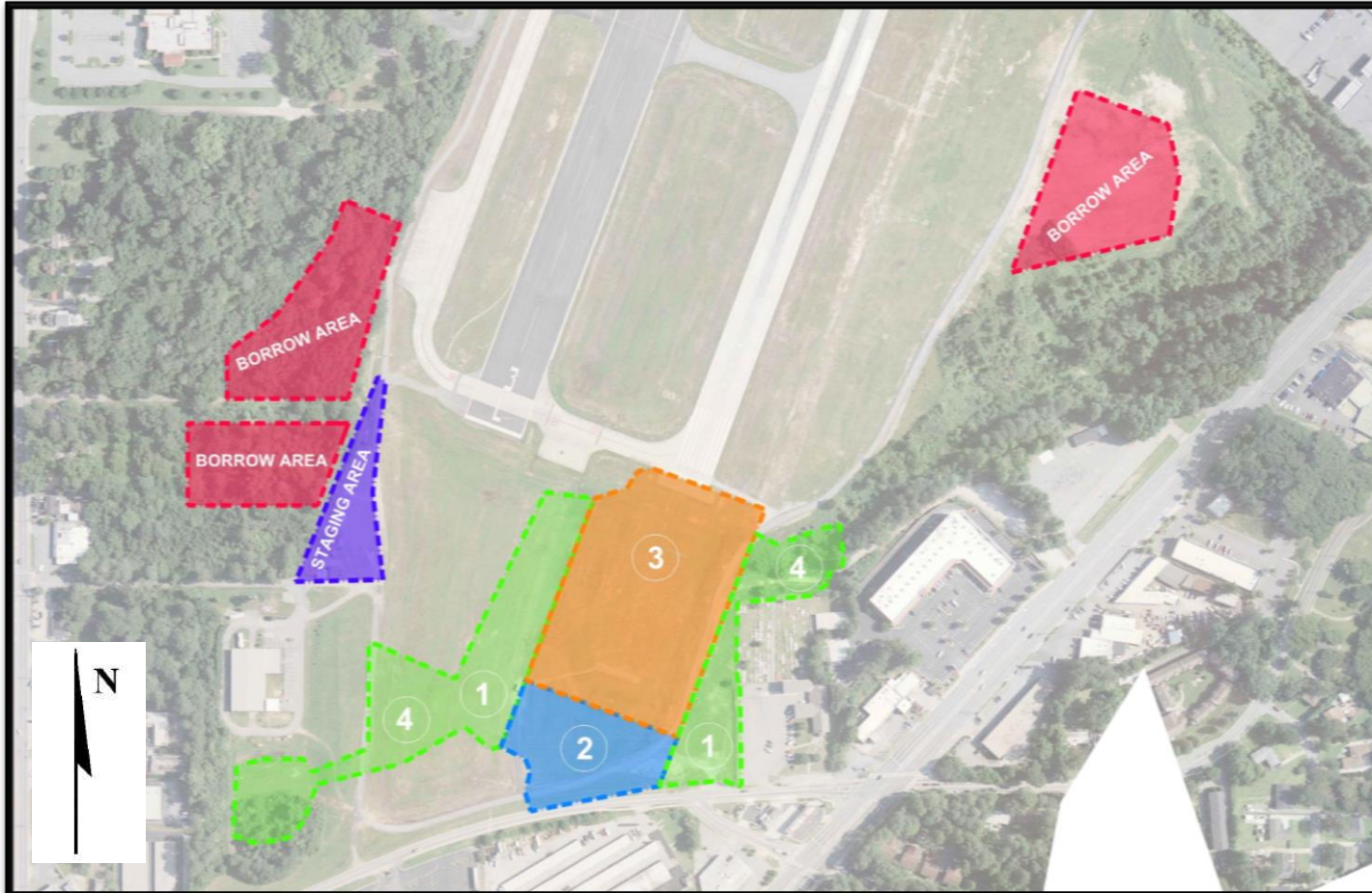


RUNWAY 21L EMAS PROJECT

(Updated 08/12/18)



Michael Baker
INTERNATIONAL



Phase 2 Timeline

- Start Date: August 27, 2018
- Completion date: September 25, 2018
- Total Duration: 30 Days
- **RWY 3R/21L** – 21L declared distance reduced to 4,551'
 - 21L -- TODA: 6001' | TORA: 5551' | ASDA: 5551' | LDA: 4551'

Phase 3 Timeline

- Start date: September 26, 2018
- Completion date: November 24, 2018
- Total Duration: 60 Days
- **FIRST 30 DAYS** (September 26, 2018 – October 25, 2018)
 - Daytime Hours (6AM-8PM) – 21L Arrivals & Departures
 - 21L -- TODA: 6001' | TORA: 5551' | ASDA: 5551' | LDA: 4551'
 - Nighttime Hours (8PM-6AM) – 3R Departures from Foxtrot Only
- **LAST 30 DAYS** (October 26, 2018 – November 24, 2018)
 - Daytime Hours (6AM-8PM) – 3R Departures from Foxtrot Only
 - Nighttime Hours (8PM-6AM) – 21L Arrivals & Departures
 - 21L -- TODA: 6001' | TORA: 5341' | ASDA: 5341' | LDA: 4341'

Phase 4 Timeline

- Start date: November 25, 2018
- Completion date: December 24, 2018
- Total Duration: 30 Days
- All work outside RSA - EMAS installed and all NAVAIDS back to normal operations.
 - 3R -- TODA: 6001' | TORA: 5411' | ASDA: 5411' | LDA: 5411'
 - 21L -- TODA: 6001' | TORA: 6001' | ASDA: 6001' | LDA: 5001'

Upcoming Schedule

*Weather permitting

Phase	Duration	Schedule
2	30 Days*	August 27, 2018 – September 25, 2018
3	60 Days*	September 26, 2018 – November 24, 2018
4	30 Days*	November 25, 2018 – December 24, 2018