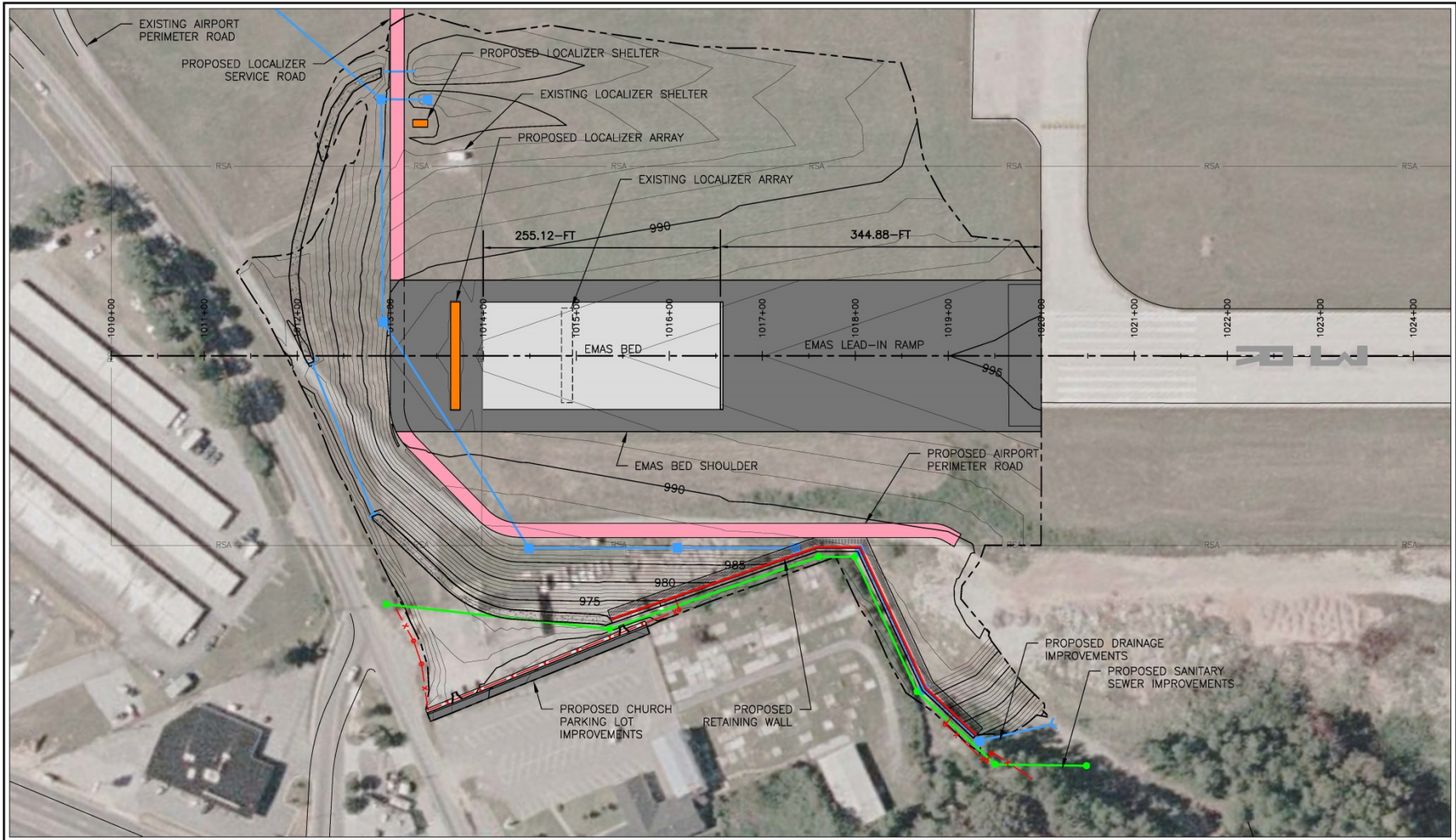




*EMAS Safety Project
Southwest Quadrant
Corporate Hangar Development
Update August 2017*

EMAS - Engineered Material Arresting System



Michael Baker
INTERNATIONAL



DEKALB - PEACHTREE AIRPORT
DEKALB COUNTY, GEORGIA
RUNWAY 3R-21L EMAS GRADING EXHIBIT

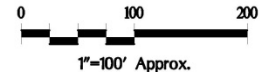
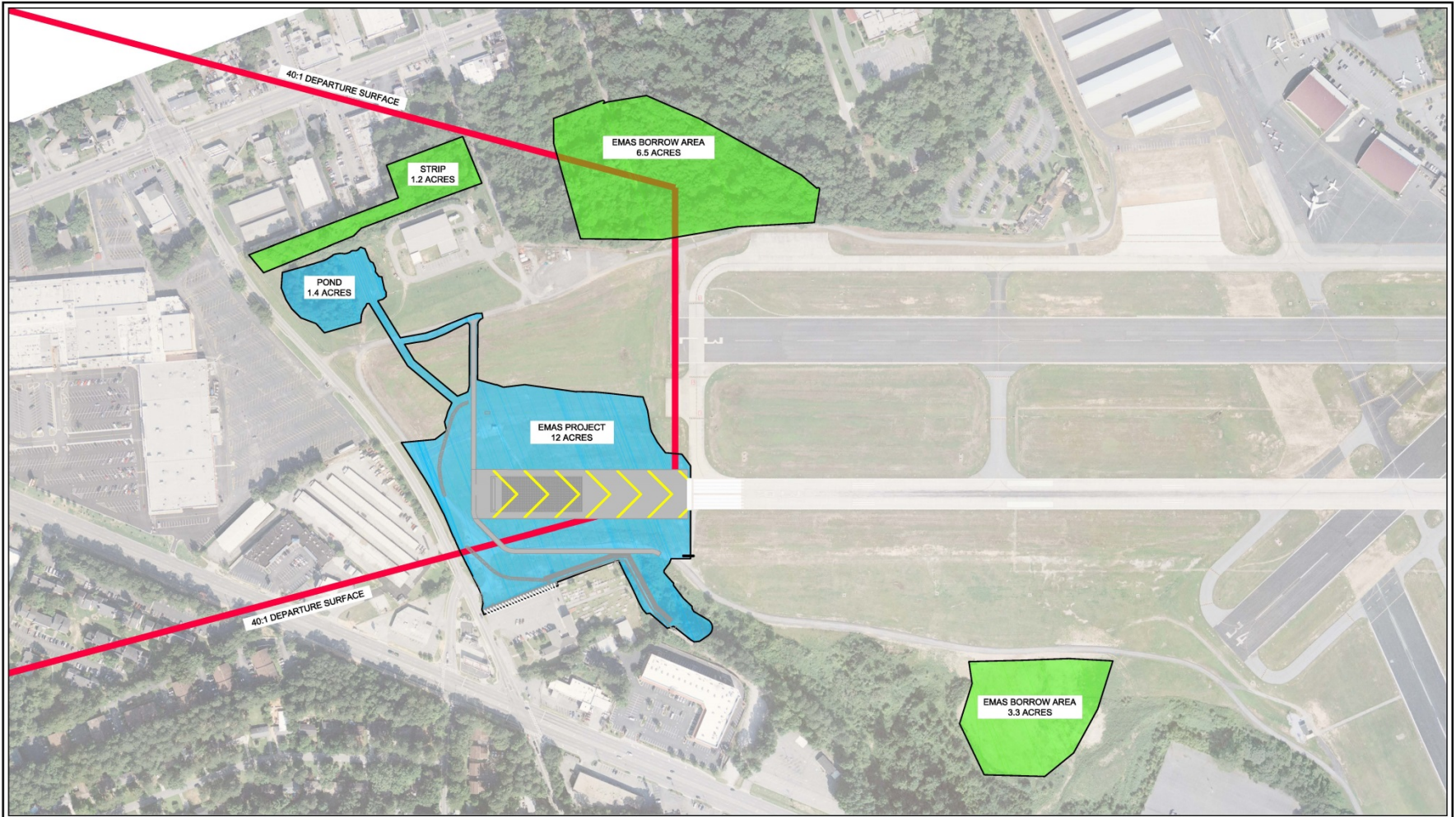


EXHIBIT 1

EMAS – Project Areas



Michael Baker
INTERNATIONAL

DEKALB PEACHTREE AIRPORT
DEKALB COUNTY, GEORGIA
RUNWAY 21L EMAS PROJECT



0 300 600
1" = 300'

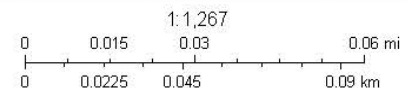
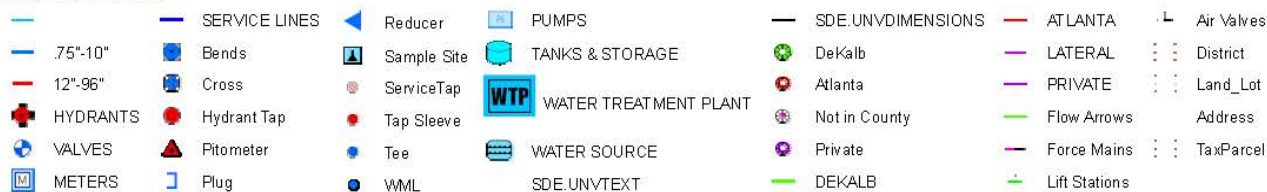
EXHIBIT 1

EMAS – StormWater & Sewer Improvements Areas

PDK SEWER RE-ROUTE



September 10, 2015



EMAS – Construction Schedule

Michael Baker
INTERNATIONAL

DEKALB-PEACHTREE AIRPORT RUNWAY 21L EMAS PROJECT



PHASE	SCOPE OF WORK	LENGTH	OPERATIONAL REQUIREMENTS
1	• EMBANKMENT GRADING	90 DAYS	NONE, MAY UTILIZE RWY 3R CLOSURES ON WEEKENDS
	• DRAINAGE INSTALLATION		
	• WALL CONSTRUCTION		
2	• EMBANKMENT GRADING	30 DAYS	NONE, MAY UTILIZE RWY 3R CLOSURES ON WEEKENDS
	• DRAINAGE INSTALLATION		
	• LOCALIZER AND SHELTER PAD CONSTRUCTION		
	• ELECTRICAL INSTALLATION		
3	• SELECT GRADING	60 DAYS	RWY 3R DISPLACED THRESHOLD OF 1000' - LIMITED TO DEPARTURES ONLY, ACTIVE CROSSING POINT ON SOUTH END OF RWY 3L
	• DRAINAGE INSTALLATION		
	• EMAS BLOCK INSTALLATION		
	• LOCALIZER AND SHELTER INSTALLATION		
	• ELECTRICAL INSTALLATION		
	• PAVEMENT MARKING		



Tree Survey



CEO / BOC Revenue Enhancement

Proposal for Constructing additional private/corporate hangars at PDK

Owners of airplanes currently housed at private/corporate hangars at DeKalb Peachtree Airport pay property taxes, lease payments and fuel flowage fees to the county and airport.

While the Airport operates as an Enterprise Fund, opportunities exists for the county to generate additional personal property tax revenue by constructing additional hangars. Additional private/corporate hangars would help the county in its efforts to attract companies to DeKalb County in its efforts for economic development and add to the county's commercial tax base long-term.

Proposal is for development of 9 new private/corporate hangars

- Each hangar could have 2 Cessna Citation Ten's based in its hangar
- A Cessna Citation Ten Business Jet aircraft; average cost \$ 23.5M;
- Estimated property tax for Cessna Citation X, \$398,945K/annually; totaling \$7.18M for 18 business jets

Benefits to the DeKalb County 29% / Chamblee 15% / School Board 55%

Total Personal Property Tax (*Ad Valorem Tax*) \$ 7,181,010.00

DeKalb \$119,013.40 (**\$2,142,234 for 18 aircraft annually**)

Chamblee \$ 60,160 (**\$1,082,880 for 18 aircraft annually**)

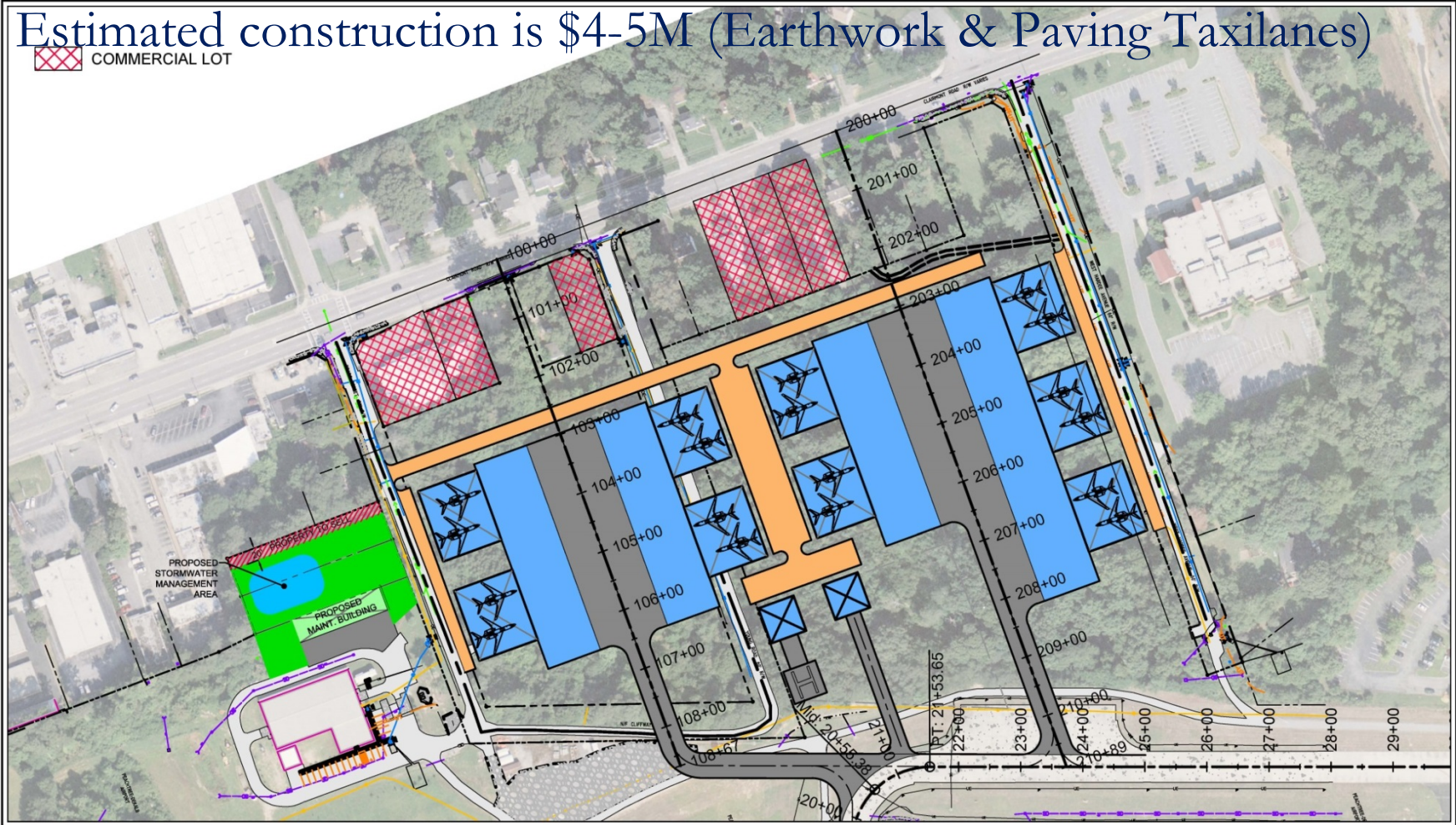
DeKalb Co School Board \$ 219,419 (**\$3,949,555 for 18 aircraft annually**)

Proposed Future Southwest Quad Development

9 Corporate Hangars; 18a/c ~ Initial Airport Revenue Stream - \$237,600 Annually, Plus fuel flowage
DeKalb \$2,142,234; Chamblee \$1,082,880; DeKalb Sch. Bd. \$3,949,555 annually)

Estimated construction is \$4-5M (Earthwork & Paving Taxilanes)

 COMMERCIAL LOT



Michael Baker
INTERNATIONAL

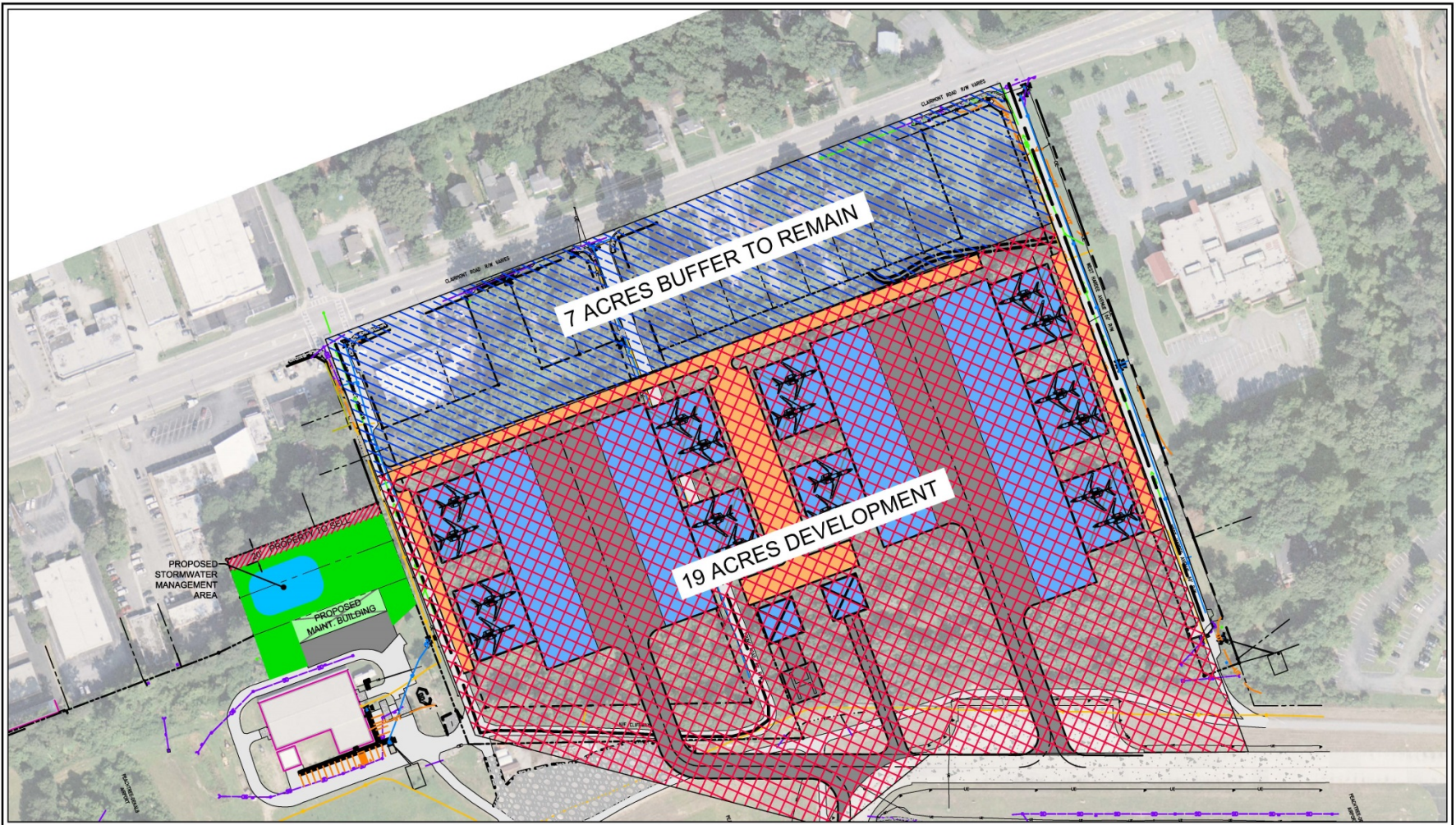
DEKALB PEACHTREE AIRPORT
DEKALB COUNTY, GEORGIA
SOUTHWEST DEVELOPMENT CONCEPT EXHIBIT



0 150 300
1"=150'

EXHIBIT 1

Proposed Future Southwest Quad Development



Michael Baker
INTERNATIONAL

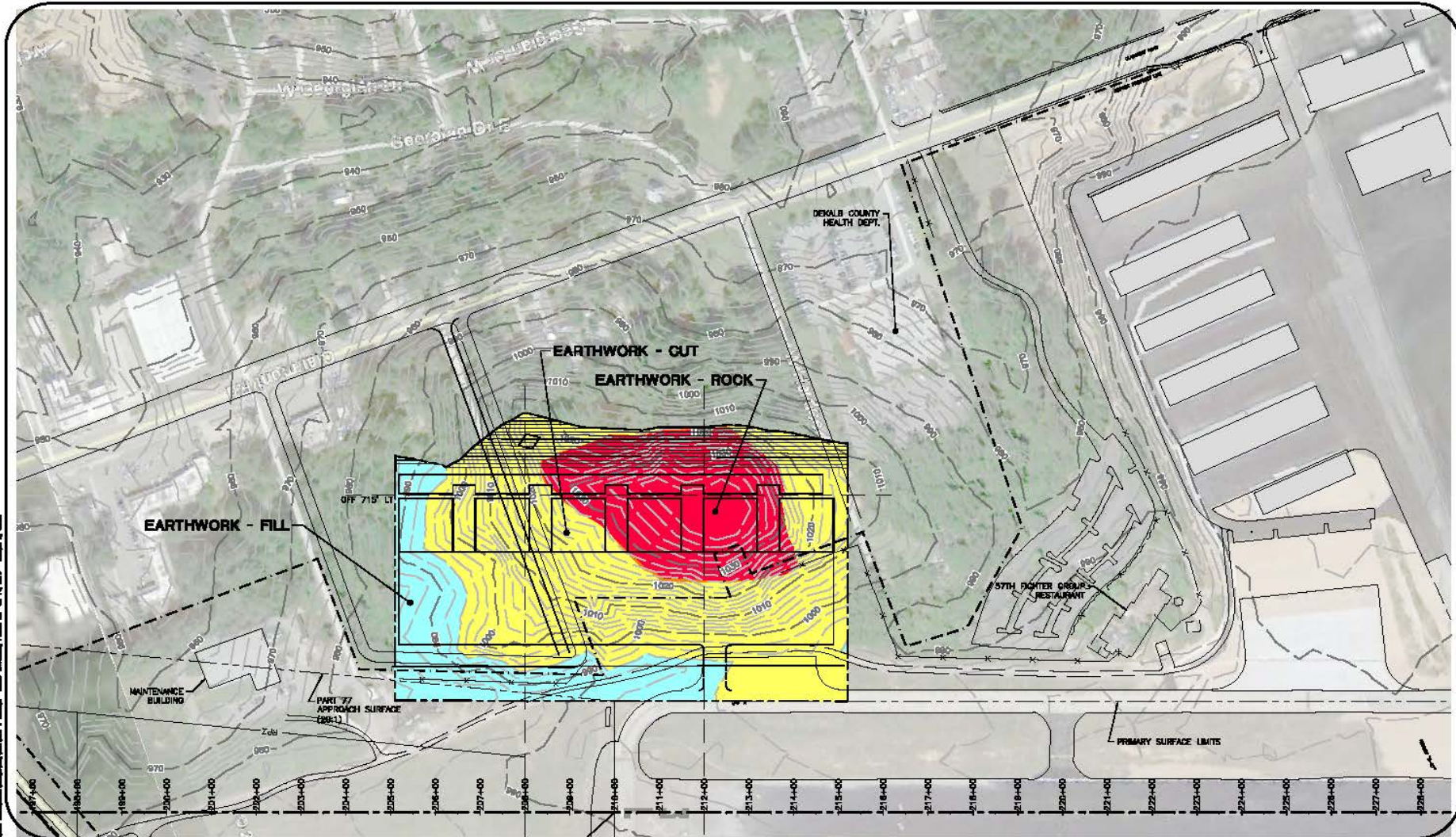
DEKALB PEACHTREE AIRPORT
DEKALB COUNTY, GEORGIA
SOUTHWEST DEVELOPMENT CONCEPT ACREAGE EXHIBIT



0 150 300
1"=150'

EXHIBIT 1

Proposed Future Southwest Quad Development



Michael Baker
INTERNATIONAL

DEKALB PEACHTREE AIRPORT
DEKALB COUNTY, GEORGIA

SW DEVELOPMENT CONCEPT - ROCK EXHIBIT

DESIGN	CPC	DRAWN	CPC	CHECK	WJR	PROJECT NO.		DATE	JULY, 2016
REVISION	DATE	DESCRIPTION					BY		EX-1
									DRAWING NO.

Proposed Future Southwest Quad Development



Michael Baker
INTERNATIONAL

DEKALB PEACHTREE AIRPORT
DEKALB COUNTY, GEORGIA
SOUTHWEST DEVELOPMENT CONCEPT VIEW



EXHIBIT 1

Proposed Future Southwest Quad Development



Michael Baker
INTERNATIONAL

DEKALB PEACHTREE AIRPORT
DEKALB COUNTY, GEORGIA
SOUTHWEST DEVELOPMENT CONCEPT VIEW


N.T.S

EXHIBIT 1

Proposed Future Southwest Quad Development



Michael Baker
INTERNATIONAL

DEKALB PEACHTREE AIRPORT
DEKALB COUNTY, GEORGIA
SOUTHWEST DEVELOPMENT CONCEPT VIEW


N.T.S

EXHIBIT 2

Proposed Future Southwest Quad Development



Michael Baker
INTERNATIONAL

DEKALB PEACHTREE AIRPORT
DEKALB COUNTY, GEORGIA
SOUTHWEST DEVELOPMENT CONCEPT VIEW

N.T.S.

EXHIBIT 3

Proposed Future Southwest Quad Development



Michael Baker
INTERNATIONAL

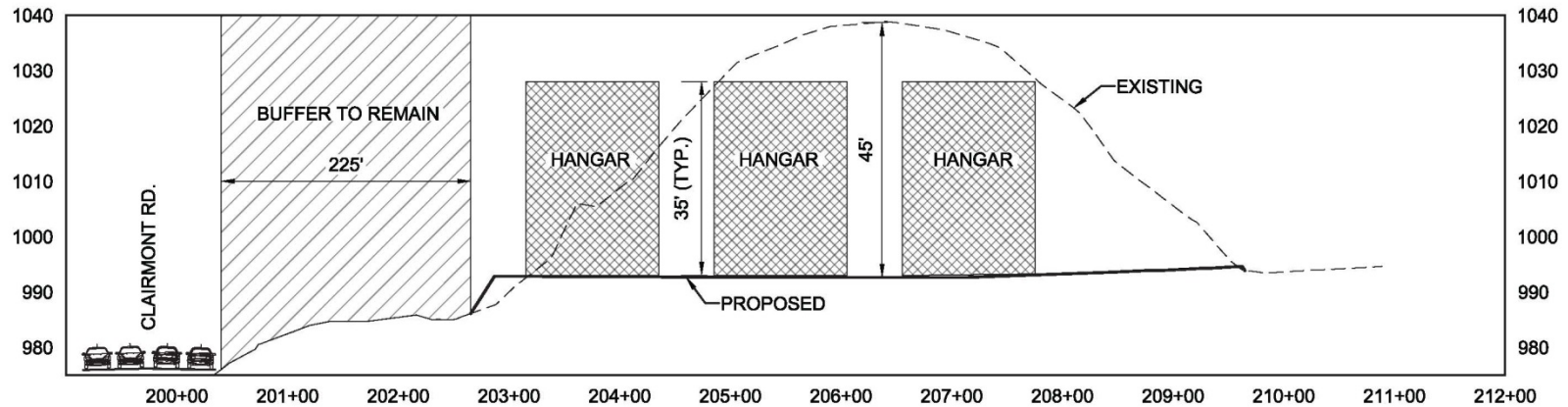
DEKALB PEACHTREE AIRPORT
DEKALB COUNTY, GEORGIA
SOUTHWEST DEVELOPMENT CONCEPT VIEW


N.T.S.

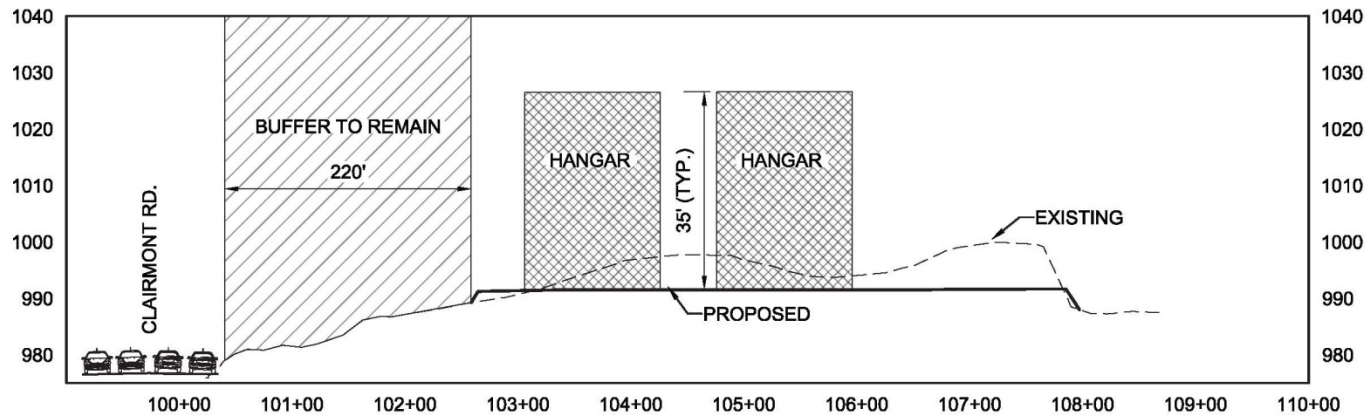
EXHIBIT 4

Proposed Future Southwest Quad Development

NORTH-CL PROFILE



SOUTH-CL PROFILE



Airport Layout Plan – ALP, 2011

