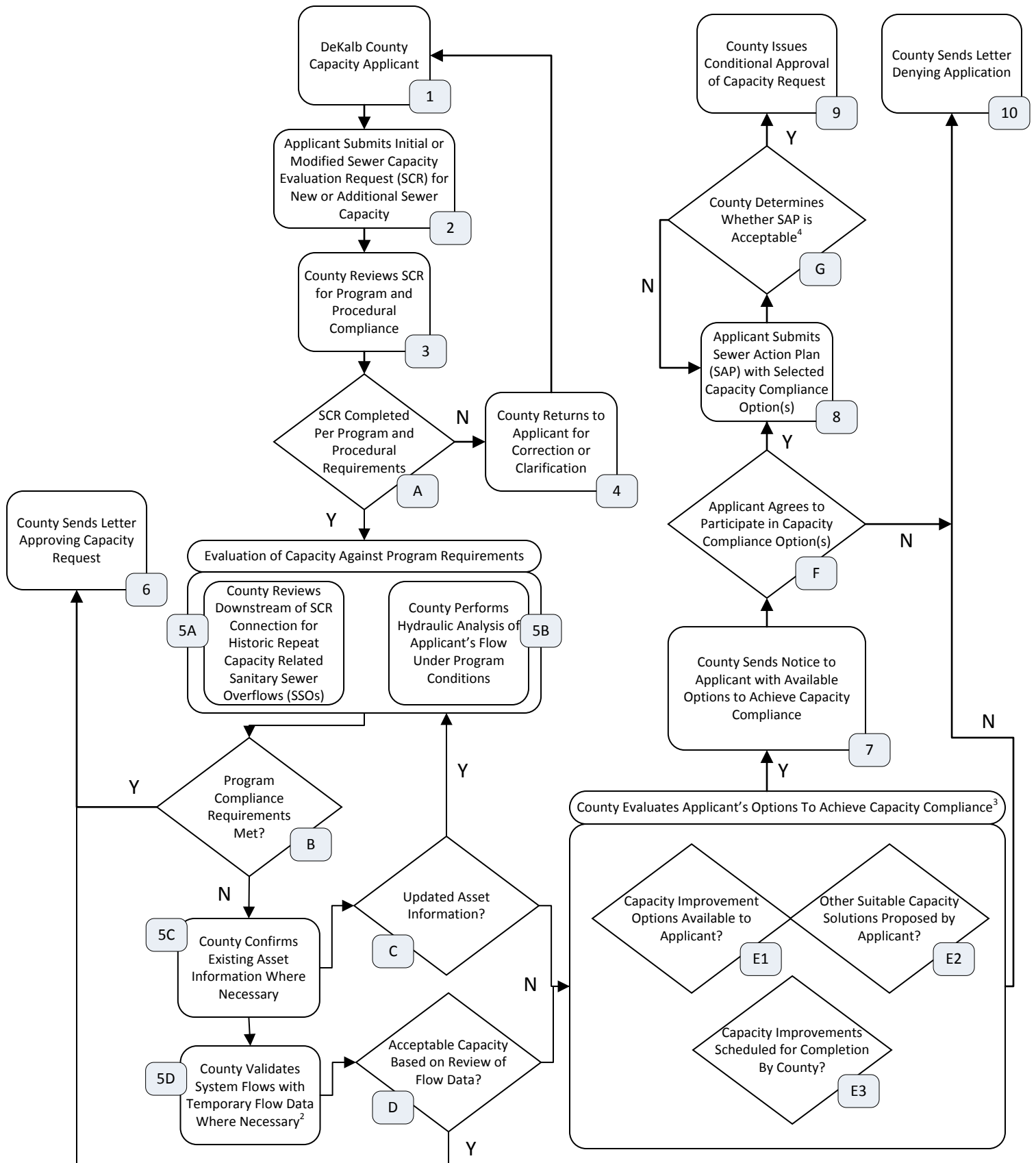


Interim Sanitary Sewer Capacity Protocol Flow Chart¹



1 – Reference the Sewer System Capacity Certification Standard Operating Procedures and the Sanitary Sewer Capacity Evaluation Program for further information.
 2 – Temporary flow meters may be installed regardless of whether Capacity Evaluation Program requirements have been met when the County believes additional flow monitoring is needed to better determine existing conditions.
 3 – County shall perform hydraulic analysis of capacity improvement options under program conditions to determine whether options are sufficient for applicant to achieve capacity compliance.
 4 – The applicant may appeal the County's decision to deny the applicant's SAP. Appeals shall be adjudicated by the County's Chief Operating Officer for Infrastructure.
 Legend – N = No; Y = Yes; Diamond = Decision; Rectangle = Activity