

Chief Executive Officer
Michael Thurmond

DEPARTMENT OF PLANNING & SUSTAINABILITY

Director
Andrew A. Baker, AICP

Application for Certificate of Appropriateness

Date Received: _____ Application No.: _____

Address of Subject Property: 1096 CLIFTON RD

Applicant: ERIC ROTHMAN, Rothman + Rothman E-Mail: eric@rothmandesign.net

Applicant Mailing Address: 2154 DEER RIDGE DRIVE, TUCKER, GA 30087

Applicant Phone(s): (404) 886-0850 Fax: _____

Applicant's relationship to the owner: Owner Architect: Contractor/Builder Other DESIGNER

Owner(s): ART & CATHY VANDENBERG E-Mail: vandenberg@ballsouth.net

E-Mail: _____

Owner(s) Mailing Address: 1096 Clifton Rd, Atlanta, GA 30307

Owner(s) Telephone Number: (404) 247-4824. (CATHY VANDENBERG)

Approximate age or date of construction of the primary structure on the property and any secondary structures affected by this project: 1920's

Nature of work (check all that apply):

- New construction Demolition Addition Moving a building Other building changes
- New accessory building Landscaping Fence/Wall Other environmental changes
- Sign installation or replacement Other

Description of Work:
REPLACE ALL DOUBLE HUNG WINDOWS EXCEPT AS NOTED ON ATTACHED PHOTOS WITH SIERRA PACIFIC SPLIT CLAD DOUBLE HUNG WINDOWS. NEW WINDOWS TO HAVE 5/8" MUNTINS (TDL, SDL) AND SPACER BARS. SEE ATTACHED PICTURES FOR SPECIFIC SCOPE. SEE ATTACHED WINDOW MANUFACTURERS INFORMATION FOR WINDOW DETAILS

This form must be completed in its entirety before the Planning Department accepts it. The form must be accompanied by supporting documents (plans, material, color samples, photos, etc.). Provide eight (8) collated sets of the application form and all supporting documentation. If plans/drawings are included, provide eight (8) collated sets on paper no larger than 11" x 17" and three (3) additional sets at scale. All documents submitted in hard copy must also be submitted in digital form (.pdf format). All relevant items from the application checklist must be addressed. An application which lacks any of the required attachments shall be determined incomplete and will not be accepted.

AWA
Signature of Applicant/Date

Certificate of Appropriateness

For

1096 Clifton Road

Scope of Work:

We are proposing to replace all the existing single pane double hung windows with new clad insulated glass windows. We will be replacing the original double hung windows with matching new double hung windows. The light pattern will match the original windows. The mullions will be 5/8" PDL(SDL) with a spacer bar. The profile of the mullion will be as simple as possible.

We will be replacing the (4) lower 12/12 windows on the front façade but the upper (5) dormer windows will remain since they were replaced under a previous C of A. Those windows were replaced with Monarch Windows with a similar mullion type and size. We have chosen to switch window manufacturers because the quality of Monarch windows have dropped considerably.

We will be replacing all the double hung windows on the sides and rear of the house. The sunroom fixed windows will remain since they are already insulated.

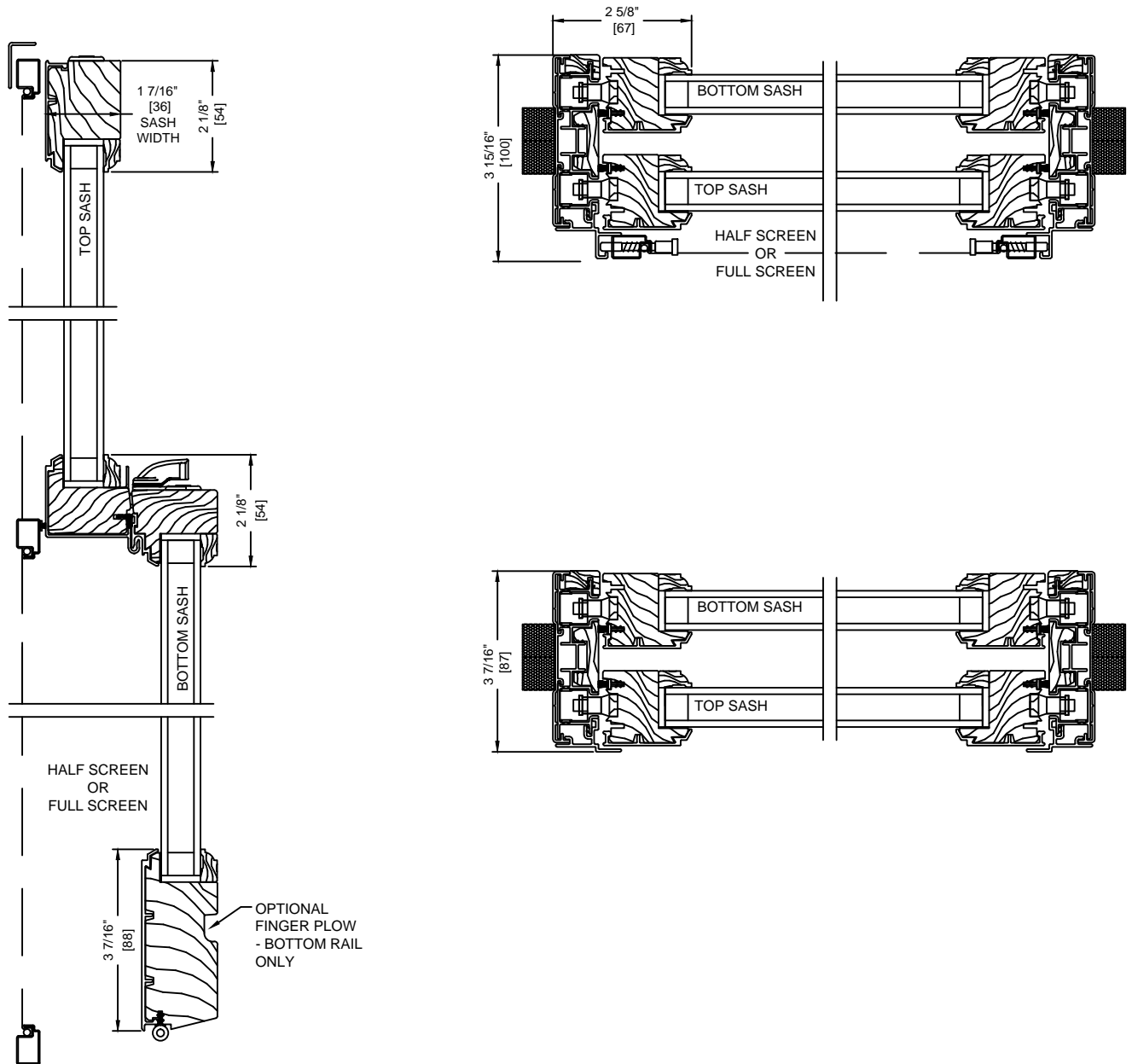
Please see the attached photos and Window manufacturer's information.



Aluminum Clad Wood Tilt Double Hung Sash Kit Windows Custom for Non-Hurd Existing Frames

Head, Sill & Jamb Details
Page 1 of 1

Drawn to Full Scale
Printed Scale 4" = 1'





1096 Clifton Road – from Street



Replace lower 4 windows with
12/12 double hungs

The dormer windows were replaced
Under a previous CofA .

1096 Clifton Road – from driveway
Front Facade

Replace (2) 6/6 double hung
Windows on both side
elevations

Replace 9/9 double hung
Windows on both side
elevations



1096 Clifton Road – Driveway Side
Opposite side elevation matches

Replace all windows in shed dormer w/
6/6 double hung windows

Replace window w/ 6/6 double hung
window

Window & patio door replaced and
Reconfigured under Previous C of A
(approved March 2017)

Sunroom windows
To remain



1096 Clifton Road
Rear Facade



1088 Clifton Road – left side
neighbor (South)



1102 Clifton Road – right side
neighbor (North)

SIERRA PACIFIC DOUBLE HUNG SASH KITS

TRANSCEND

REPLACEMENT WINDOWS & PATIO DOORS



**SIERRA
PACIFIC**
WINDOWS THAT
NEVER COMPROMISE

REPLACE YOUR OLD DOUBLE HUNG WINDOWS WITH NEW ENERGY-EFFICIENT SIERRA PACIFIC WINDOWS WITHOUT REMOVING YOUR EXISTING WINDOW FRAME.

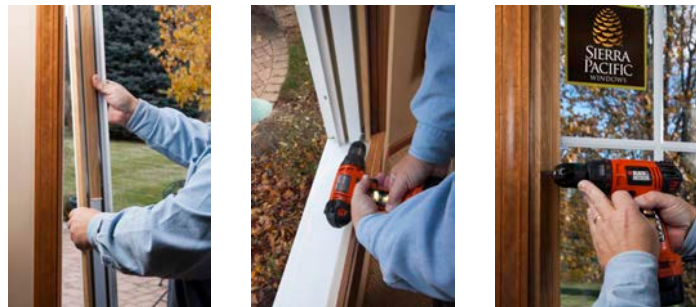
If your existing double hung window frames are still in good condition, here's the smartest, least expensive, most convenient way to replace them. Sierra Pacific easy-tilt replacement sash kits are sized to fit your existing sash opening. They install very easily. It's all accomplished from inside your home—without removing your existing frame, sill, interior or exterior trim.

As with every Sierra Pacific product, better engineering in our sash kit means noticeably better performance. Both sash tilt easily to make removal and cleaning a snap. Both sash operate smoothly and seal completely.

So you get all the benefits of today's newest window technology without the expense and mess of a big remodeling project.

HERE'S WHY SIERRA PACIFIC SASH KITS ARE SUPERIOR TO OTHERS:

1. Unlike other sash kits, our balances are concealed. You'll appreciate the difference immediately.
2. Our sash kits are adjustable for far superior installation and smoother operation.
3. Our wood is protected to the very core with CoreGuard™ P lus. It's the best wood protection in the business, and only Sierra Pacific has it.
4. Our sash kits are protected on the outside by double-thick, heavy-duty, .055 extruded aluminum cladding.
5. Our optional integral screen channel is a first.
6. Matching full or half screens are available and automatically Pre-Sized to the Sash Kit.
7. Although you get everything you need (all parts, detailed installation and finishing instructions), we've simplified installation by using fewer parts and no clips.



AVAILABLE WITH THE FULL RANGE OF SIERRA PACIFIC OPTIONS.

PICK YOUR FAVORITE COLOR.

COLOR STAY™ COLLECTION

White 001	✓ Linen 032	French Linen 112	Morning Dove Gray 113	Colonial White 313	Sandstone 003	Beige 335
Tan 043	✓ Gull Gray 007	✓ Seawolf 044	Fashion Gray 111	Slate Gray 045	✓ Battleship Gray 321	TW Black 061
✓ Black Sable 060	Slate Blue 008	Light Blue 046	✓ Steel Blue 114	Aqua Mist 115	Hampton Blue 323	Sage Green 005
Teal 047	Hemlock Green 048	Patina Green 051	Forest Green 049	Evergreen 009	Green 004	✓ Hartford Green 050
Moss 031	✓ Greek Olive 081	Terra Cotta 053	✓ Clay 026	ICI Brown 056	✓ Colonial Red 054	Harvest Cranberry 010
Burgundy 055	Deep Plum 116	Deep Taupe 077	✓ Antique Bronze 057	TW Brown 058	✓ Bahama Brown 309	Regal Brown 059
Brown 002	✓ Bronze 024	✓ Black 023				

The exterior of Sierra Pacific sash kits is fully encased in low maintenance, heavy-duty, extruded aluminum. Ours is at least twice as thick as our competitors' roll-form cladding.

What's more, our finishing process leads the industry in durability and environmental safety. Non-hazardous AAMA 2604 and 2605 powder-coatings have the color retention, surface hardness and scratch resistance necessary to withstand even the harshest conditions.

As for colors? Nobody gives you more choices than Sierra Pacific. 75 colors and some sensational textures allow you to add warmth, a splash of cheerfulness or a new statement to your designs. We'll also custom match any color you choose.

TEXTURED COLLECTION

El Cajon Silver 068	Sift Espresso 097	Mocha 098
Cajun Spice 099	Pesto 100	Available AAMA 2604 only.

WEATHERED COLLECTION

Weathered Café Royale 104	Weathered Cocoa 105	Weathered Brown 034
Weathered Bronze 078	Weathered Clay 075	Weathered Red Pepper 108
Weathered Rust 076	Weathered Basil 107	

INDUSTRIAL COLLECTION

Medium Bronze Industrial 101	Dark Bronze Industrial 102
------------------------------	----------------------------

PEARL METALLIC COLLECTION

El Cajon Silver 068	Platinum 067	Light Bronze Pearl 069
Medium Bronze Pearl 070	Dark Bronze Pearl 071	

METALLIC COLLECTION

Alpine Silver 062	Metallic Champagne 063	Bronze Classic 064
Classic Copper 088	Copper Penny 065	

ANODIZED COLLECTION

Clear Anodized 103/332	Anodized 096/307	Anodized 095/306
Black Anodized 0117/353	Copper Anodized 352	

✓ Colors available in vinyl
Printing limits our ability to show colors precisely.
See your local representative for actual cladding samples.

PICK YOUR FAVORITE WOOD.



Copyright Vance Fox, Heslin Construction

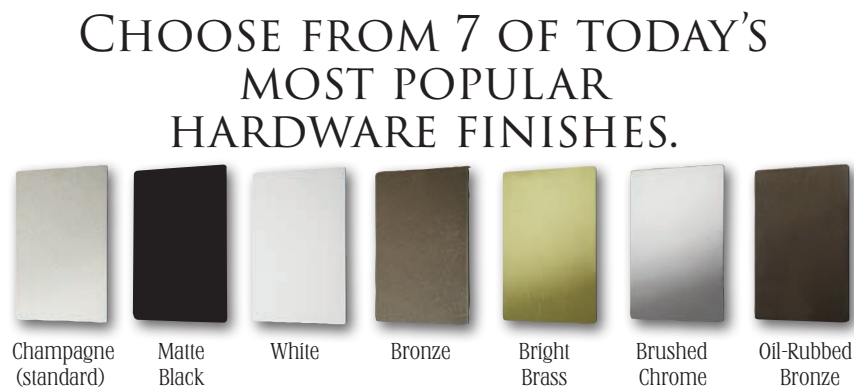
A Sierra Pacific replacement sash kit will warm your room with the natural beauty and insulation of wood. In a perfect world, your windows would match your cabinets perfectly. So Sierra Pacific lets you specify the wood species for your sash kit. While our standard ponderosa pine is pure premium grade, you can also choose from eight other woods or any workable species.

PICK YOUR FAVORITE FINISH.



Optional sash lift handle.

Lock.



A SPOTLESS FACTORY FINISH.

While an unfinished interior is our standard finish, or a Latex Factory Primer is available- both allowing you to apply your own final finish, nothing beats a factory finish performed with state-of-the-art equipment under rigorously controlled, ultra-clean conditions. Sierra Pacific gives you 2 premium options.

Our Ultra Stain brings out all the beauty of your wood interior. Our Ultra Coat is a catalyzed polyurethane, interior paint that's so durable, it could be used outdoors. Custom matched stains are also available.

TURN BASIC INTO BOASTFUL.

Enhance your sash kit with the classic charm of our wood grilles or divided lites. Choose from our standard grille configurations, or design your own custom grille.

Removable Wood Grille

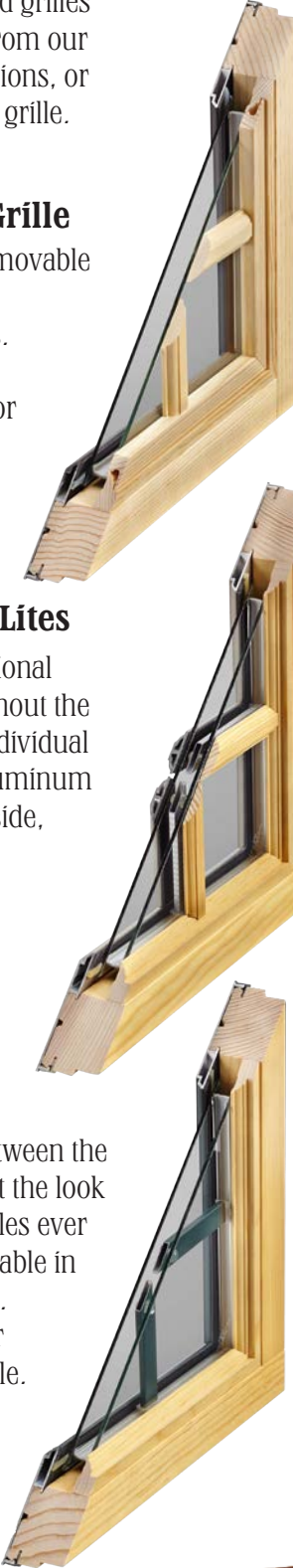
Our full surround removable wood grille is a beautiful alternative to divided lites. The grille pops out easily for washing the window or if your tastes change.

Simulated Divided Lites

Get the look of traditional true divided lites, but without the energy loss caused by individual glass panes. Extruded aluminum outside, natural wood inside, and aluminum spacers between the glass. Also available in an all-wood version.

Grilles in Airspace

We seal the grille between the panes of glass. So you get the look you want without the grilles ever getting in your way. Available in solid or two-tone finishes. Choose from flat (5/8") or contour (11/16 or 1") profile.



Grille Profiles	Sierra Pacific Simulated Divided Lite	Wood Grille
Putty 5/8"		
Putty 7/8"		
Putty 1"		
5/8"		
7/8"		
1"		
1-1/4"		
2"		

HIGH PERFORMANCE GLAZING OPTIONS.

What's the best glazing for your replacement windows and patio doors?

Obviously, what's best for a freezing northern winter is not necessarily right for a hot southern summer.

We have the answer. With one of the broadest selections of glazing options in the window industry, Sierra Pacific lets you choose exactly the right performance glass for your exact weather and environmental conditions.

You can choose glazing to improve your energy efficiency and lower your energy bills. You can capture the sun's heat, or reflect it. You can also reduce outside noise, block the sun's damaging UV rays, or even enhance your privacy.

Dual Pane Warm Edge Low-E



Insulated for improved energy efficiency. Single surface low-E coating to reduce solar heat gain and block UV rays.

Low-E 366



Cardinal's triple layer silver product with Warm Edge Spacer, a high density foam, for superior performance. 95% UV protection. Solar heat gain coefficient of 0.27*. Also available with Preserve® protective film or with Preserve and Neat® coating for a naturally cleaner glass.***

Low-E 366 with i89 Coating**



The same superior performance as regular Low-E 366 (above), but with the addition of i89 coating on the interior surface to increase insulating value and reduce solar heat gain. Meets even the most extreme requirements in the majority of the Canadian Energy Star zones. Also available with Preserve protective film or with Preserve and Neat coating.***

Low-E 340



Cardinal's newest glazing innovation. It has an amazingly low 0.18* solar heat gain coefficient to keep out the heat even in the blazing sun. Slightly tinted. Blocks 98% of UV rays. Less heat gain when it's hot, less heat loss when it's cold, and maximum glare control. Also available with Preserve protective film or with Preserve and Neat coating.***

Low-E 180 Passive Solar



A very high (0.70*) coefficient for capturing solar heat gain. Ideal for reducing your heating bills in colder climates. Superior insulation value blocks cold and keeps in the heat. Also available with Preserve protective film or with Preserve and Neat coating.***

Low-E 180 Passive Solar with i89 Coating**



The same superior performance as regular Low-E 180 (above), but with the addition of i89 coating on the interior surface to increase insulating value. Meets even the most extreme requirements in the majority of the Canadian Energy Star zones. Also available with Preserve protective film or with Preserve and Neat coating for a naturally cleaner glass.***

Insulated Glass



For moderate climates. Basic glazing with basic performance.

Sound Control

Reduces outside noise by as much as 50% while blocking 99% of damaging UV rays. Laminated for shatter resistance. Available insulated or non-insulated.

Additional Options: Obscure Glass

Tempered Glass

Tinted Glass

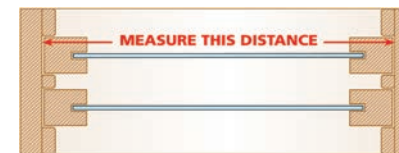
We offer 11 different decorative glass styles to help you create unique window designs, filter harsh sunlight or enhance privacy and security. From fancy to simple, formal to casual, each has its own personality and lends its own character to your décor. For the optimum in one-of-a-kind, custom designed windows, consider our leaded or stained glass. Your options are limitless. We'll work with you to handcraft anything your mind can imagine.

*All values shown are center of glass. **Interior surface coatings, also known as surface #4, are applied to the interior (room-side surface) of a dual pane IG unit, resulting in improved thermal performance and lower heating costs. Because the coating reflects heat back into the room, the room-side pane of glass will be slightly colder in winter, causing a higher potential for interior condensation. ***Available when selecting XL Edge Spacer.

MEASURING & SIZING INFORMATION.

How To Measure:

1. Measure the width of your existing sash opening from the inside of the wood on the left jamb to the inside of the wood on the right jamb in 3 different places: top, middle, bottom.



2. Measure the sash opening (pocket) height from the head jamb to where the exterior of the bottom sash sits on the sill when fully closed. Measure at the left side, middle, and right side.



Tools Needed:

- Level
- Measuring tape
- Putty knife
- Utility knife
- Flathead screwdriver
- Phillips screwdriver
- Small finishing nails
- Roofing nails
- Hammer
- Miter gauge and protractor
- Saw
- Safety glasses
- Drill and drill bits

3. Measure your sill angle using a miter gauge and protractor, or use another angle measuring tool available at your hardware store. (The standard sill angle for Sierra Pacific sash kits is 14 degrees, but any angle between 5 and 14 degrees is available if specified.)



Custom Sizes in 1/8" Increments Available

Minimum Size:

16.5" x 30.5" sash opening

Maximum Size:

Sash opening widths up to 44", heights up to 92.5"

Sash kits can adjust to fit an opening width by as much as 1/8" via jambliner compression and installation screw adjustment. The sash opening height cannot be adjusted from the actual opening height.

Step 1 Prepare the opening.



Step 2 Install new jamb and balances.



Step 3 Install new sash.



Step 4 Install new head weatherstripping.



Step 5 Enjoy your new window.





SIERRA PACIFIC

WINDOWS THAT
NEVER COMPROMISE

www.SierraPacificWindows.com | P.O. Box 8489, Red Bluff, CA 96080 | 800-824-7744 | A Division of



Sierra Pacific windows and doors are successful thanks to our unique patents. Visit spi-ind.com/ip to learn more.