

## YARD TRIMMINGS

Yard trimmings include grass clippings, leaves, twigs, branches, limbs, tree parts, shrubbery, vines, garden plants and other naturally occurring vegetative matter. All yard trimmings must be properly prepared for collection. Approved yard trimmings containers must be placed curbside by 7 a.m. and removed by 7 p.m. on residents' scheduled collection day.

### ACCEPTABLE CONTAINERS

- Durable metal containers with two handles (up to 40-gallon capacity)
- Durable plastic containers with two durable handles (up to 40-gallon capacity)
- Biodegradable paper bags (no plastic bags)

### COLLECTION PROCEDURES

- Biodegradable bags must be folded at the top to minimize rain deterioration
- Branches and limbs must be trimmed of twigs, vines & leaves
- Twigs, vines and leaves must be placed in an approved container
- **Tree limbs must either be stacked neatly at the curb** (see third picture under "Proper Procedure" below) or **must be bundled and tied** (see fourth picture under "Proper Procedure" below), and should not exceed four feet in length
- Tree parts (each piece) must not exceed 25 lbs.
- Containers or bags should not contain dirt, or will require a special collection fee

Large piles of yard trimmings not meeting the above restrictions can be scheduled for a special collection - prepaid fee required. See **Special Collection Procedures** on our website.

**Tree limbs cut by professional or hired contractors and left at the curb will incur a prepaid special collection fee.**

### PROPER PROCEDURE



(properly prepared yard trimmings)

### SPECIAL COLLECTIONS fee applies



(improperly prepared yard trimmings)

## RECYCLING PROGRAMS

### RESIDENTIAL SINGLE-STREAM RECYCLING

The residential curbside single-stream recycling program is a free subscription service offered to county residents, and is a critical component of the county's environmental stewardship efforts. Currently, over 120,000+ households participate in the program. For more information and to subscribe, visit [www.dekalbsanitation.com](http://www.dekalbsanitation.com).

### GLASS RECYCLING

The placement of glass in residents' curbside single-stream recycling is no longer permitted. However, residents are encouraged to continue recycling glass. Several large volume county-operated glass recycling drop-off containers are located throughout the County, and are available for public use. This program provides county residents with an alternative to placing glass in curbside garbage. This preserves the integrity of recycled glass, making it a more marketable and valuable resource. Visit [www.dekalbsanitation.com](http://www.dekalbsanitation.com) for more information, including a listing of glass recycling drop-off locations.

### E-RECYCLING

Electronics recycling, or e-recycling, is a term used for recycling electronics that have essentially reached the end of their useful life. The County's goal is to promote the recovery, reuse and recycling of obsolete electronic equipment, while diverting some electronics from the Seminole Road Landfill. Residents can drop off approved e-recycling items at the County's Seminole Road Landfill, 4203 Clevermont Road, Ellenwood, GA 30294. Visit [www.dekalbsanitation.com](http://www.dekalbsanitation.com) for more information.

### SHOE AND CLOTHING RECYCLING

This program facilitates the reuse and recycling of shoes and clothing. Visit [www.dekalbsanitation.com](http://www.dekalbsanitation.com) for more information

## CONTACT INFORMATION

### DeKalb County Sanitation Division

Administration Building  
3720 Leroy Scott Drive  
Decatur, GA 30032  
404.294.2900

[sanitation@dekalbcountyga.gov](mailto:sanitation@dekalbcountyga.gov)  
[www.dekalbsanitation.com](http://www.dekalbsanitation.com)

@DKalbSanitation



Printed on recycled paper

## RESIDENTIAL COLLECTION PROCEDURES

### DEKALB COUNTY SANITATION DIVISION



Sanitation Division Administration Building

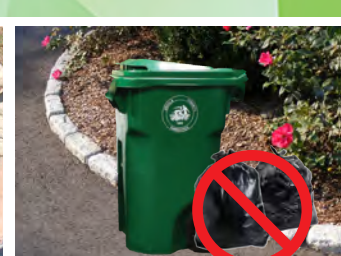
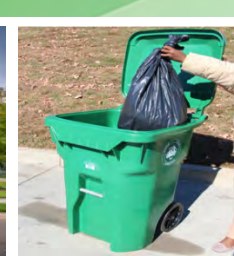
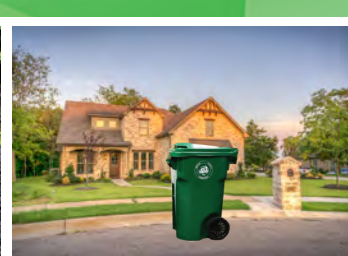
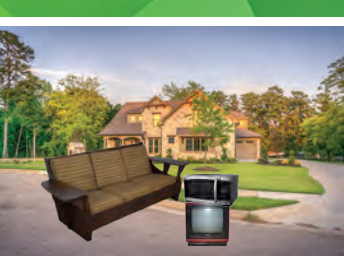


Sanitation Division Public CNG Fueling Station



Sanitation Division Automated Side-loader (ASL) Truck





## BULKY ITEMS

Bulky items include large trash items that cannot fit in garbage roll carts, and are included in residential annual sanitation assessment fees.

Once items are placed curbside without blocking mailboxes, driveways, sidewalks, drainage systems, roadways and utilities, residents are required to submit collection requests in person; online at [www.dekalbsanitation.com](http://www.dekalbsanitation.com); via a secure drop box located at the front entrance of the Sanitation Division's administration building; OR via USPS mail to the Sanitation Division administration building.

### ACCEPTABLE ITEMS

Furniture and other large items such as:

- Chairs and tables
- Couches, loveseats and futons
- Mattress and box spring
- Lawn furniture and lawn mowers (gas and oil must be removed prior to placing at the curb)
- Grills (NO PROPANE TANKS)
- Microwave ovens
- Toys, bicycles and playground equipment
- Hand-held tools and accessories
- Toilets
- Televisions

### WHITE GOODS

- Stoves and water heaters
- Refrigerators & freezers (contents and doors/lids must be secured or removed on all items prior to placing at the curb)

### SPECIAL COLLECTIONS (prepaid fee required)

- Eviction piles
- Excess/overflow bags
- Large volumes of garbage
- Construction, demolition and remodeling materials including carpet, fencing, decking, etc. (roll-off containers available)
- Trees and large volumes of improperly prepared yard trimmings
- Tree limbs cut by professional or hired contractors
- Unflattened boxes and more than 10 flattened boxes

### UNACCEPTABLE ITEMS

- Batteries: large-sized alkaline batteries and wet cell/lead acid batteries, such as the kind found in cars, trucks and boats
- Waste in nonstandard county-provided container
- Hazardous materials of any kind
- Concrete

## CURBSIDE RECYCLING

The curbside single-stream recycling program is a voluntary subscription-based program that allows the commingling of recyclable items in county-provided recycling roll carts.

Recycling subscribers can obtain either a standard complimentary 35-gallon recycling roll cart, or upgrade to a 65-gallon recycling roll cart for a one-time \$15 prepaid fee. To subscribe, please submit an application in person; online at [www.dekalbsanitation.com](http://www.dekalbsanitation.com); via a secure drop box located at the front entrance of the Sanitation Division's administration building; OR via USPS mail to the Sanitation Division. Once an application is received and processed, residents will receive their recycling roll cart as soon as possible (based on inventory and staffing resources). **Only county-issued recycling roll carts will be serviced.**

### ACCEPTABLE ITEMS

- All steel, tin and aluminum cans
- Paper containers and cups
- Milk, juice and soup cartons
- Newspapers, magazines, phone books and catalogs
- Cardboard boxes (flattened); no packing materials (see Special Collections for large amounts of unflattened boxes)
- Cereal and pantry paper boxes
- All types of paper, including copy and wrapping paper
- Frozen food containers (remove food liners & foil)
- Tissue and paper towel cylinder cores
- Coated paper inserts
- Books, circulars, brochures, manila folders
- Envelopes, junk mail (shredded paper must be in transparent bags, and tied prior to placing at curb)
- Plastic bottles, cups and containers (1-5; 7)

### UNACCEPTABLE ITEMS

- Paper towels and tissue
- Waxed paper, cellophane paper or plastic wrap
- Aluminum or tin foil
- Foam rubber material or packing material
- Plastic grocery or department store bags
- Dry cleaning bags; paper slips
- Cereal box liners, frozen food box liners and foil
- Ceramic or aerosol containers
- Pane glass windows or mirrors
- Pesticides and herbicides
- Petroleum or oil
- String, twine or strapping material
- Polystyrene cups and to go trays (plastic #6)
- All glass containers that held food and beverage (please use glass recycling drop-off containers)

## HOUSEHOLD GARBAGE

Every household within the Sanitation Division's service area is provided with a county-issued garbage roll cart. All household garbage must be placed in secure plastic bags prior to placement in the roll cart.

**Excess/overflow bags are not permitted outside of roll carts and will not be serviced. To address excess/overflow garbage, residents can schedule a special collection (fee applies), OR obtain additional garbage roll carts (an increase in annual sanitation assessment prepaid fees will apply).**

Items must be placed curbside before 7 a.m. on residents' scheduled collection day. Roll carts must be removed by 7 p.m. on residents' scheduled collection day, or according to city code or Homeowners Association (HOA) covenants, if applicable.

**Only county-issued garbage roll carts will be serviced.**

### UNACCEPTABLE ITEMS - should not be placed in roll cart

- Automobile tires
- Dead animals
- Dirt, rocks, sod, concrete, hot ashes
- Toxic waste or liquid waste
- Motor oil and filters
- Wet cell batteries
- Loose trash
- Sinks, bathtubs and toilets
- Yard trimmings
- Large appliances or furniture
- Playground equipment
- Wood and metal fences
- Decking or other construction and demolition material not identified in the Special Collections category

**Some items can be collected for a prepaid special collection fee - visit our [Bulky Item](#) and [Special Collections](#) webpage for more information.**

**Proper disposal warning for sharp objects, razor blades, lancets, needles and broken glass**

These items can puncture a plastic bag and cause injury to the refuse collector. Please place these items in a taped plastic container with a lid, with the words "Do not recycle."

**Proper disposal for dog and cat feces**

Must be bagged, then placed in a larger garbage bag with other household garbage being placed in the roll cart.

For more information on garbage collection policies and procedures, please visit [www.dekalbsanitation.com](http://www.dekalbsanitation.com) or follow @DKalbSanitation on Twitter.