

Monthly Noise Report

August 2019

Prepared by:
Korey Barnes
Environmental & Noise Analyst



Introduction:

DeKalb-Peachtree Airport (PDK) is located in a highly noise-sensitive area as it is surrounded by residential communities. Aircraft noise is noise pollution generated by an aircraft, and may occur during all phases of flight. For instance, while aircraft are on the ground, taxiing, operating auxiliary power units (APUs), and conducting run-ups may contribute noise pollution to the surrounding areas. While aircraft are in the air, noise pollution can occur underneath and to the sides of departure and arrival paths.

The primary goal of the **PDK Good Neighbor Program** is to serve as a community-based program with aims to reduce aircraft noise levels in the vicinity of the airport. Since its inception, the program has sought to increase awareness of airport operations and develop airport/community partnerships with the surrounding cities of Chamblee, Doraville, Dunwoody, Brookhaven, North Atlanta (including the Buckhead community), and others. The program is a multifaceted one that uses many approaches to convey information in a succinct manner.

The program strives to reduce overall aircraft noise disturbances by soliciting airport-user involvement. Community and airport participation, learning, and cooperation are the keys to the program's success.

This report provides a monthly summary of airport operations, noise disturbances, and impacts to the surrounding neighborhoods to airport users and the surrounding communities.

August 2019 Aircraft Operations:

| | This Month | This Month, Last Year (August 2018) | % Change from August 2018 | 5-Year Average for Month |
|----------------------|-------------------|--|------------------------------|-----------------------------|
| Total Operations | 13,702 | 14,303 | -4.20% | 13,564 |
| Itinerant | 10,642 | 10,059 | 5.80% | 9,831 |
| Local | 3,060 | 4,244 | -27.90% | 3,733 |
| Voluntary Curfew Ops | 375 | 333 | 12.61% | 330 |
| Prior Authorization | 124 | (9) Noise disturbance calls associated with these flights. (8) Voluntary curfew ops were associated with these flights. | | |

**Prior Authorization
(Section 6-93 Code)**

Operation

Itinerant

Local

Voluntary Curfew Ops

Aircraft certified by the FAA with a max gross take-off weight greater than 75,000 pounds

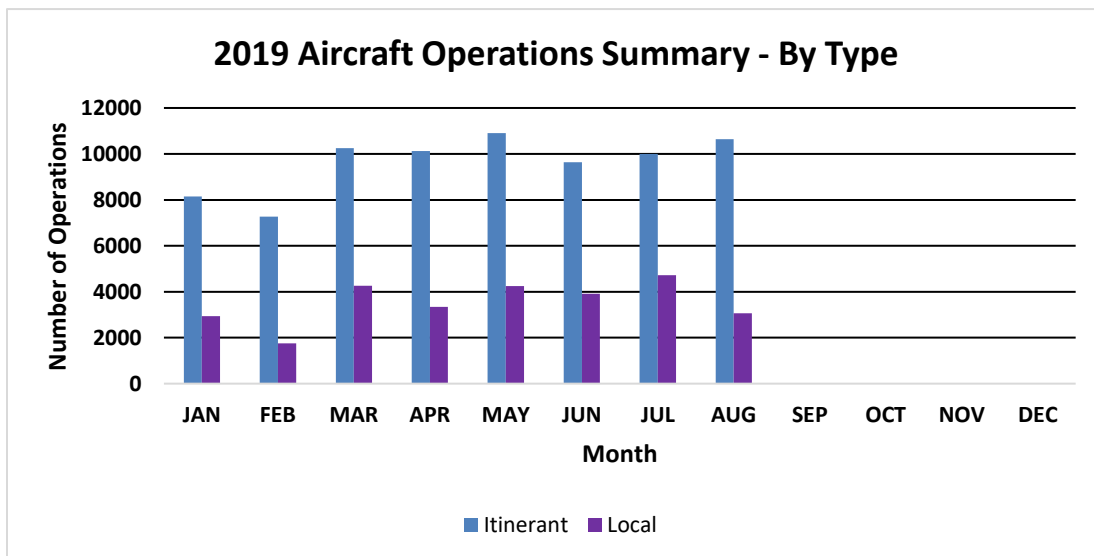
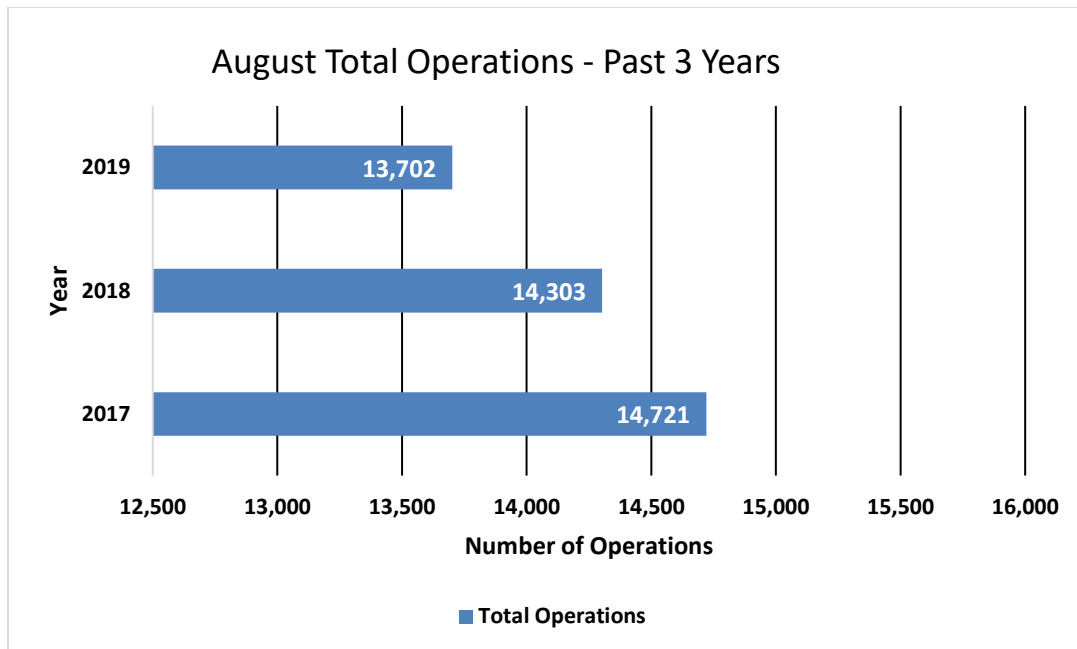
One take-off or landing. Touch-and-go counts as two operations

Non-touch-and-go (regular operations)

Operations within 20 miles of Airport

Operations that occur between the hours of 11:00 p.m. and 6:00 a.m.

August 2019 Aircraft Operations Summary

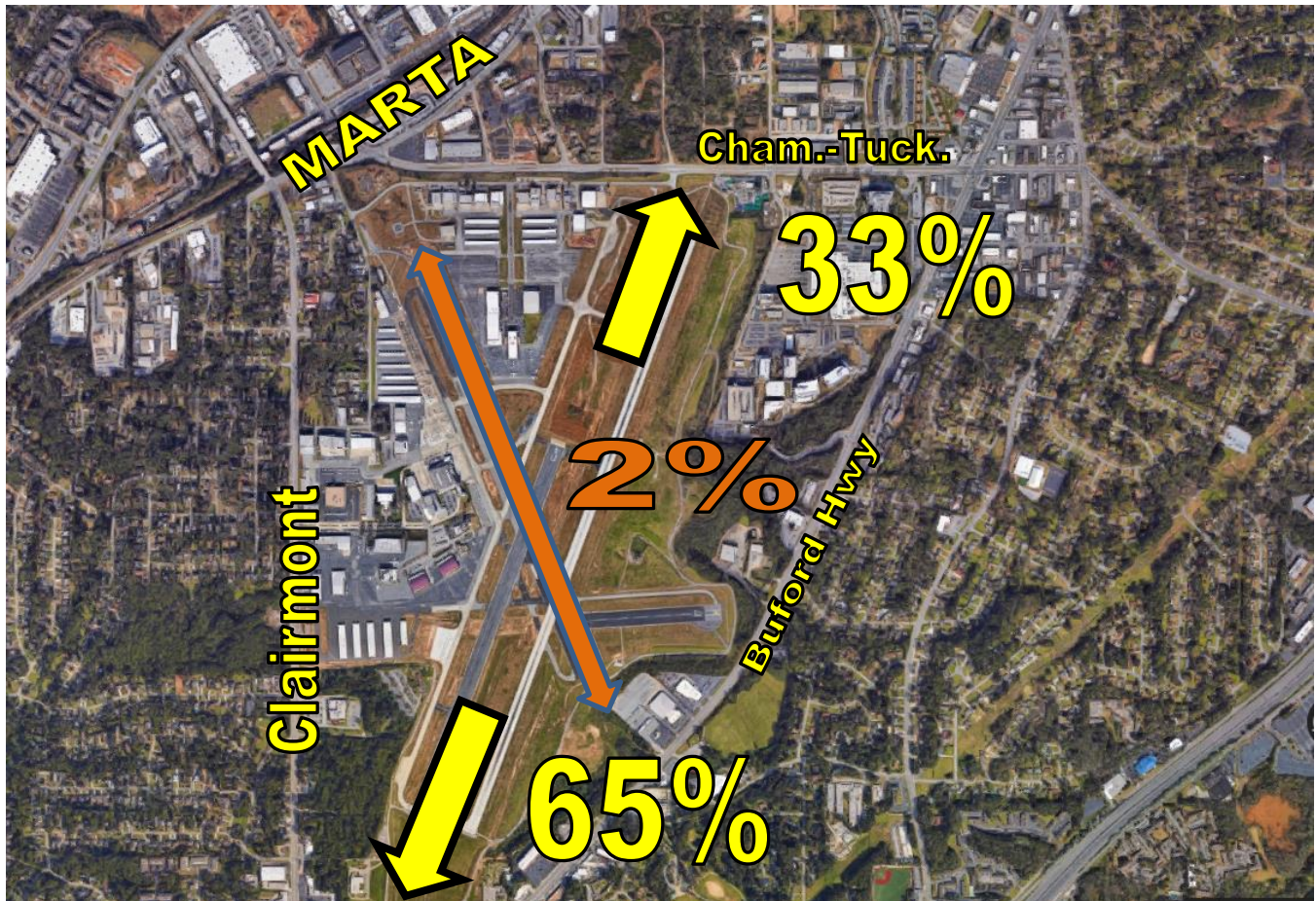


| | | |
|------------------------------|--|---|
| 2018 Total Operations | 2018 Total Operations as of August 2018 | Total 2019 Ops as of August 2019 |
| 151,132 | 108,909 | 105,197 (-3.41%) |

| 2019 Operations by Month | | | | |
|--------------------------|---------------|--------------|---|---------------------|
| | Itinerant | Local | Total Tower- Recorded Operations | Voluntary Curfew |
| JAN | 8,151 | 2,934 | 11,085 | 301 |
| FEB | 7,268 | 1,753 | 9,021 | 340 |
| MAR | 10,247 | 4,259 | 14,506 | 323 |
| APR | 10,119 | 3,347 | 13,466 | 346 |
| MAY | 10,904 | 4,249 | 15,153 | 358 |
| JUN | 9,634 | 3,910 | 13,544 | 315 |
| JUL | 10,004 | 4,716 | 14,720 | 354 |
| AUG | 10,642 | 3,060 | 13,702 | 375 |
| SEPT | | | | |
| OCT | | | | |
| NOV | | | | |
| DEC | | | | |

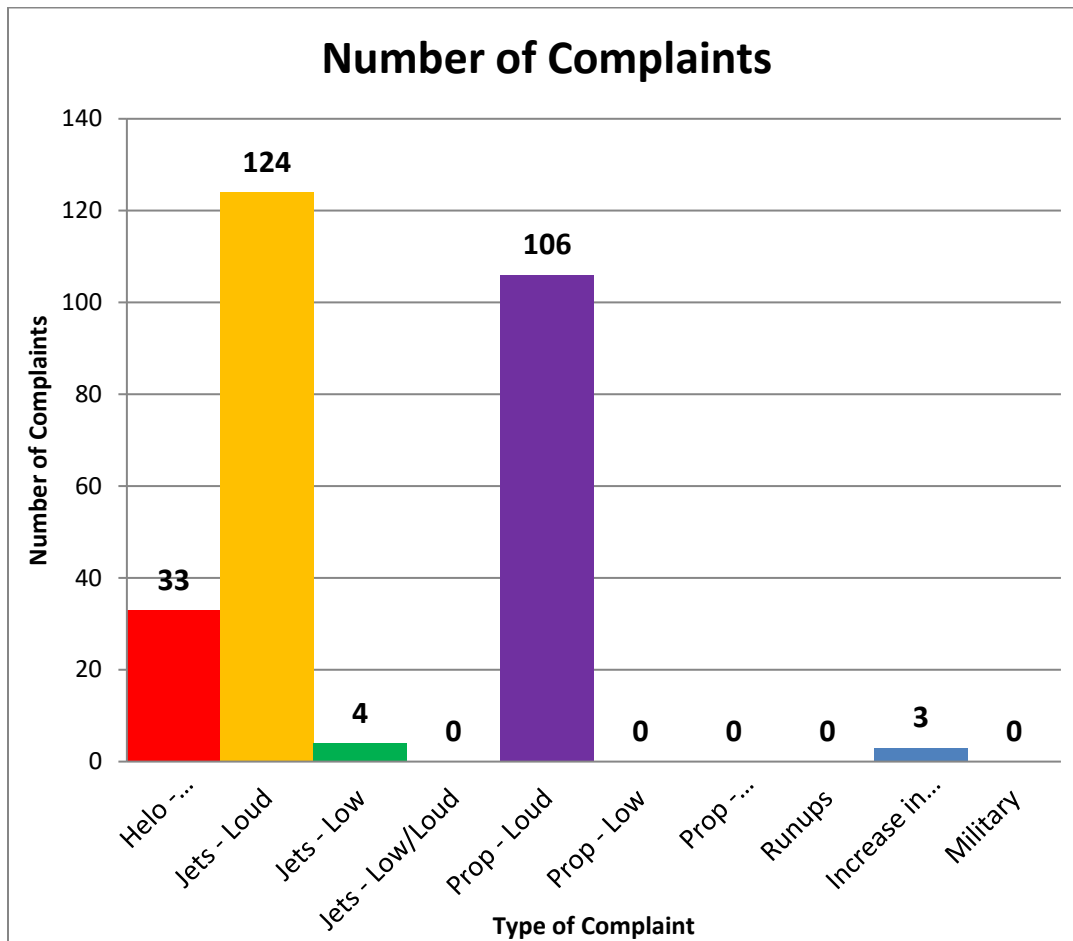
Runway Mode of Operations – August 2019

Directional use of runways has a major effect on flight patterns and the areas affected by flight operations. Weather and wind direction generally determines runway selection. When the tower is open, the FAA Air Traffic Control Tower determines the directional use of the runways. When possible, the tower will try to keep operations on a northbound flow (takeoffs and landings to the north) for noise abatement.

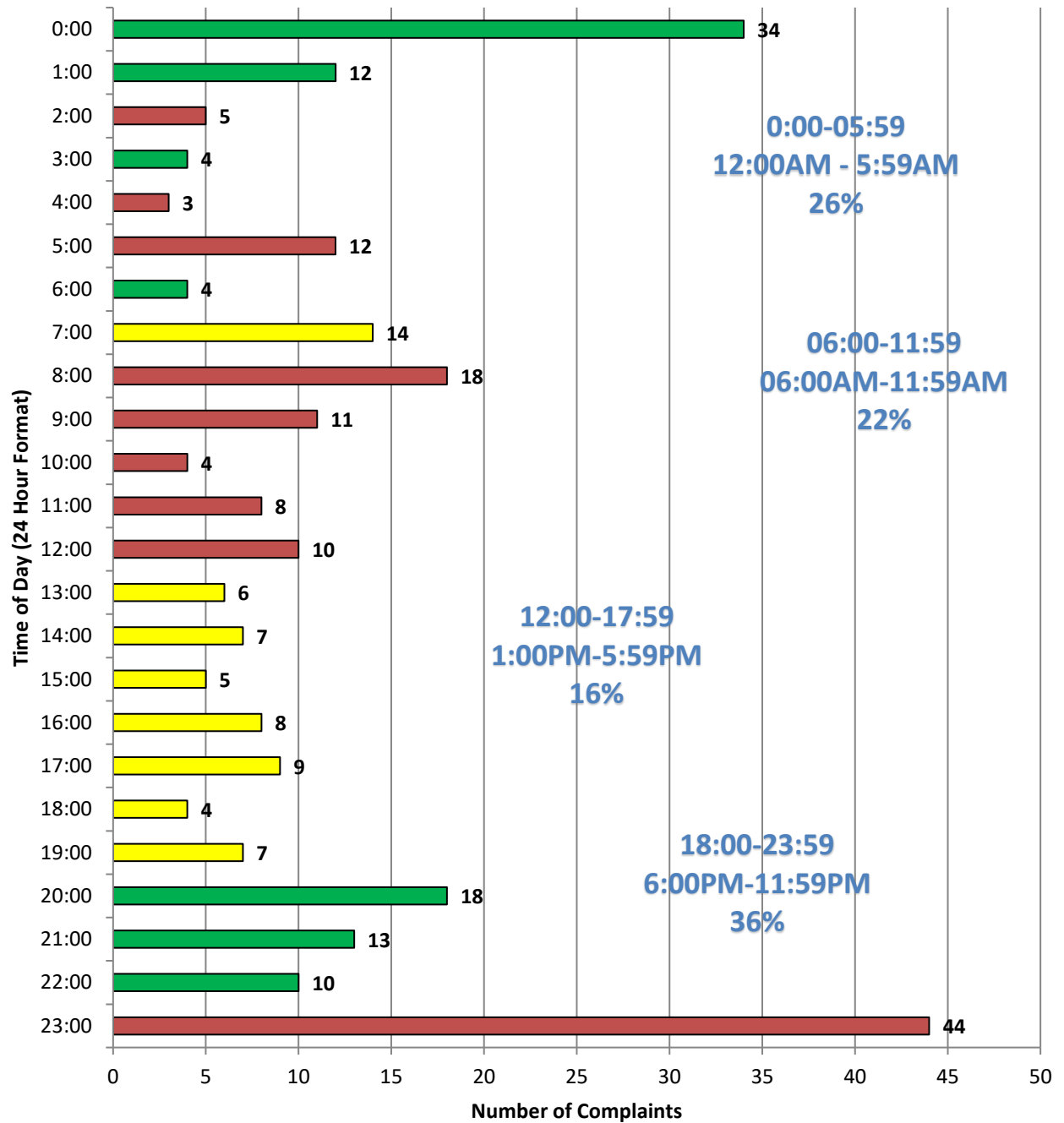


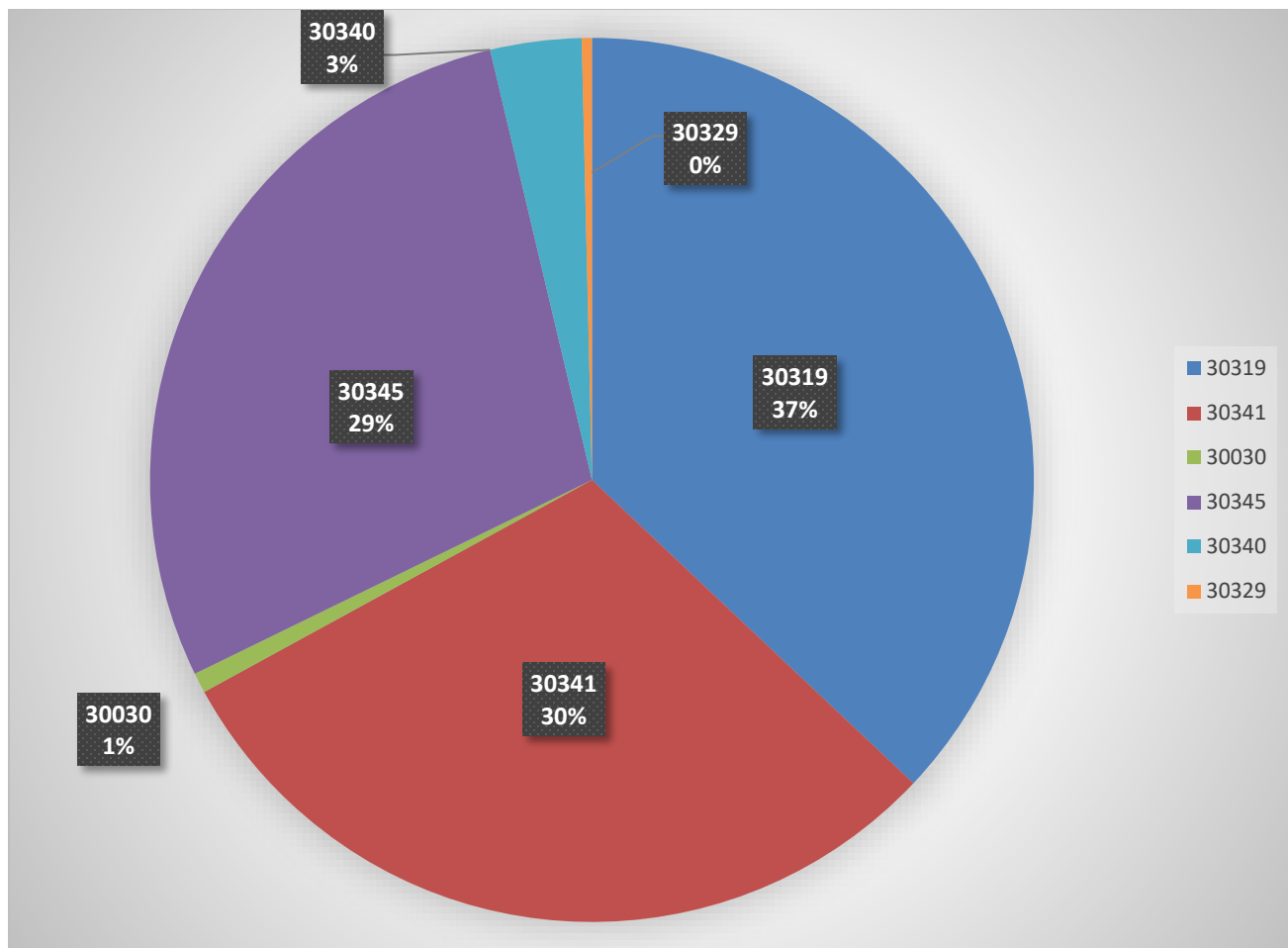
Noise Disturbance Summary

| Total complaints for August 2019 | Monthly Complaint Average 2019 | August 2019 Complaints per Household <i>(minus top two/Households)</i> | August 2019 Complaints per Household <i>All Inclusive</i> |
|----------------------------------|--------------------------------|--|---|
| 270 | 348 | 7.6 | 14.2 |



Number of Complaints by Hour





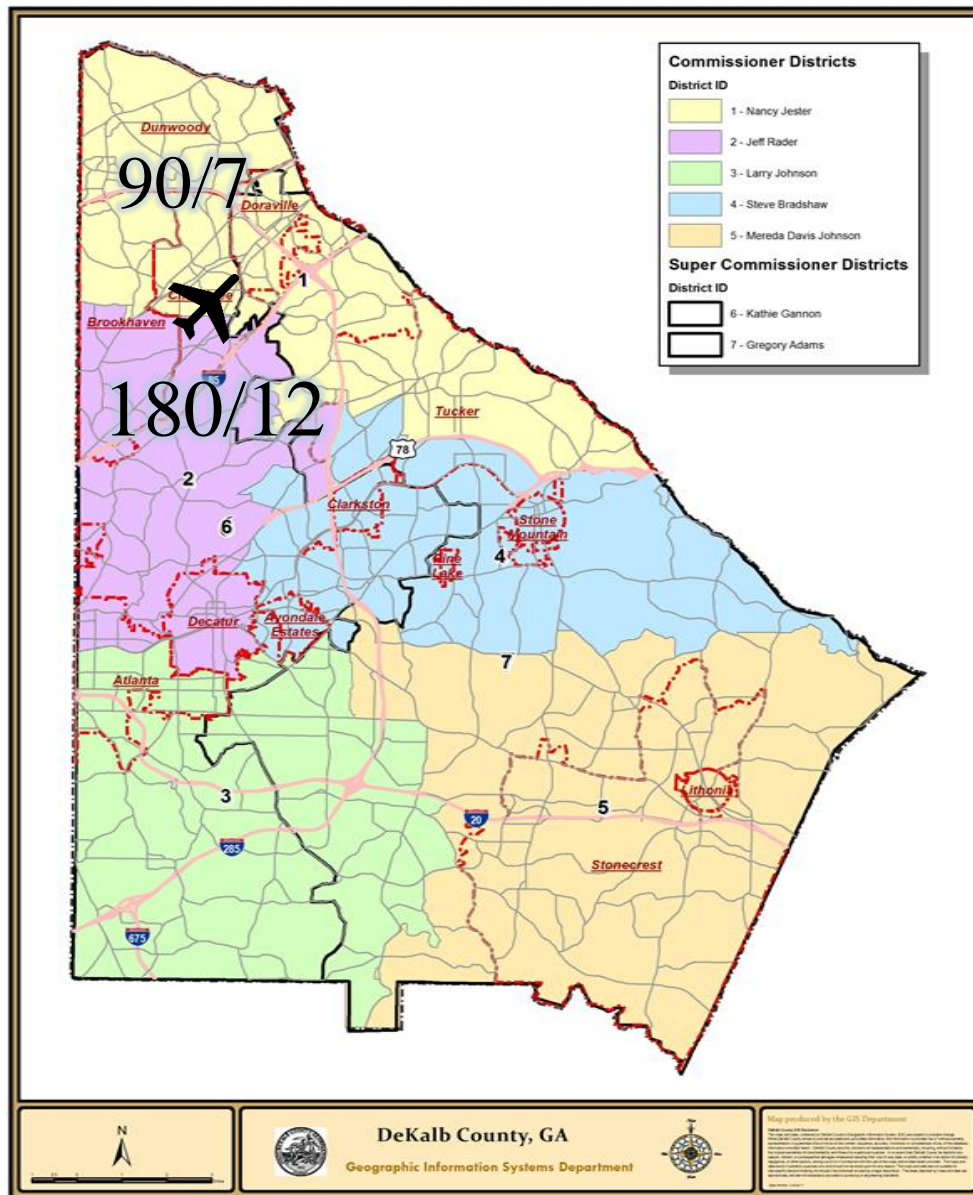
| Zip Code Guide | | |
|----------------|-------------------|-----------------|
| Zip Code | Community | % of Complaints |
| 30319 | Brookhaven | 37% |
| 30341 | Chamblee - North | 30% |
| 30345 | Chamblee – South | 29% |
| 30340 | Doraville | 3% |
| 30030 | Decatur** | 1% |
| 30329 | North Druid Hills | 0% (0.0037%) |
| | | |
| | | |

** The 2 complaints from Decatur were investigated and determined not to be from KPDK Traffic. Correlation was with KATL Traffic

Complaints by Caller

| Name | Address | City | Zip Code | Complaints |
|------------|-----------------------------------|------------|----------|------------|
| Anon - 1 | Skyland Trail NE | Atlanta | 30319 | 75 |
| Philips | 2442 Wentworth Dr NE | Atlanta | 30345 | 65 |
| Anon - 2 | Stratford Arms Dr | Chamblee | 30341 | 60 |
| Terry | 2652 Cove Circle NE | Atlanta | 30319 | 13 |
| Yates | 1889 9th Street | Chamblee | 30341 | 9 |
| Snyder | 3439 Allison Dr | Doraville | 30340 | 9 |
| Doyle | 2541 Dering Pl NE | Atlanta | 30345 | 7 |
| Anon -3 | Shallowford Rd | Chamblee | 30341 | 6 |
| Anon - 4 | Cotswold Drive NE | Brookhaven | 30319 | 6 |
| Davidian | 1806 Duke Road | Chamblee | 30341 | 4 |
| Anon - 5 | Groveglan Ct | Atlanta | 30345 | 4 |
| Schneeberg | 2707 Ashford Rd, NE | Atlanta | 30319 | 3 |
| Rodman | 402 Drexel Ave | Decatur | 30030 | 2 |
| Ruben | 2039 Drew Valley Road | Atlanta | 30319 | 2 |
| Needle | 3144 Parkridge Crescent | Chamblee | 30341 | 1 |
| Friedman | 1353 Brookhaven Village Cir NE | Atlanta | 30319 | 1 |
| Delk | 1934 Variations Dr NE | Atlanta | 30329 | 1 |
| Penn | 3039 Skyland Dr NE | Chamblee | 30341 | 1 |
| Palumbo | 7202 Westchester Ln | Atlanta | 30345 | 1 |

Complaints per Commission District



Total Number of Complaints

Total Number of Complainants

270/
19

There were 0 complainant(s) outside of DeKalb County with 0 complaint(s) total.

Correlation Chart of Noise Complaints to Operations

Chart Legend:

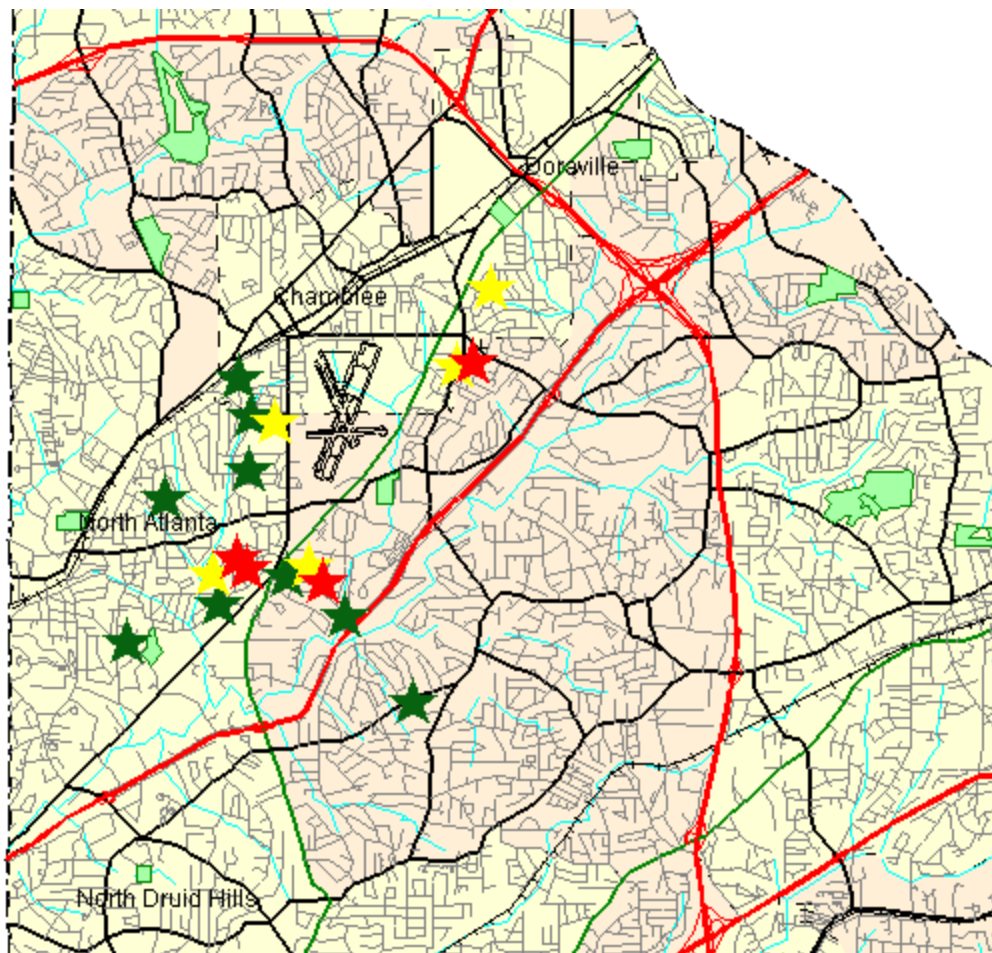
The airport correlated **267 (98.9%)** out of **270** complaints:

- **254 or 94.1%** of the noise complaints were found to be **Direct** correlations
- **13 or 4.8%** were **Indirect** correlations to operations
- **3 or 1.1%** were **Not Correlated**.
- **Direct** = Linked to a **specific flight operation to/from PDK** over a house/monitor (NOMS or manual correlation).
- **Indirect** = **Not linked to a specific flight operation** (take-off thrust, reverse thrust; maintenance run-ups) **OR** flight operation **not originating or terminating at PDK**.
- **Not correlated** = There was no noise event and/or aircraft track based on either NOMS correlation or manual research.

Please contact: *Korey Barnes, Airport Noise and Environmental Analyst*, for more information regarding the PDK Good Neighbor Program at (770) 936-5440 or kbarnes@dekalbcountyga.gov.

PDK maintains a **hotline** that permits residents to report noise concerns by dialing: **(770) 936-5442** or e-mailing: pdknoise@dekalbcountyga.gov.

Disturbance Location Pin Map – August 2019



1-5 Complaints



6-10 Complaints

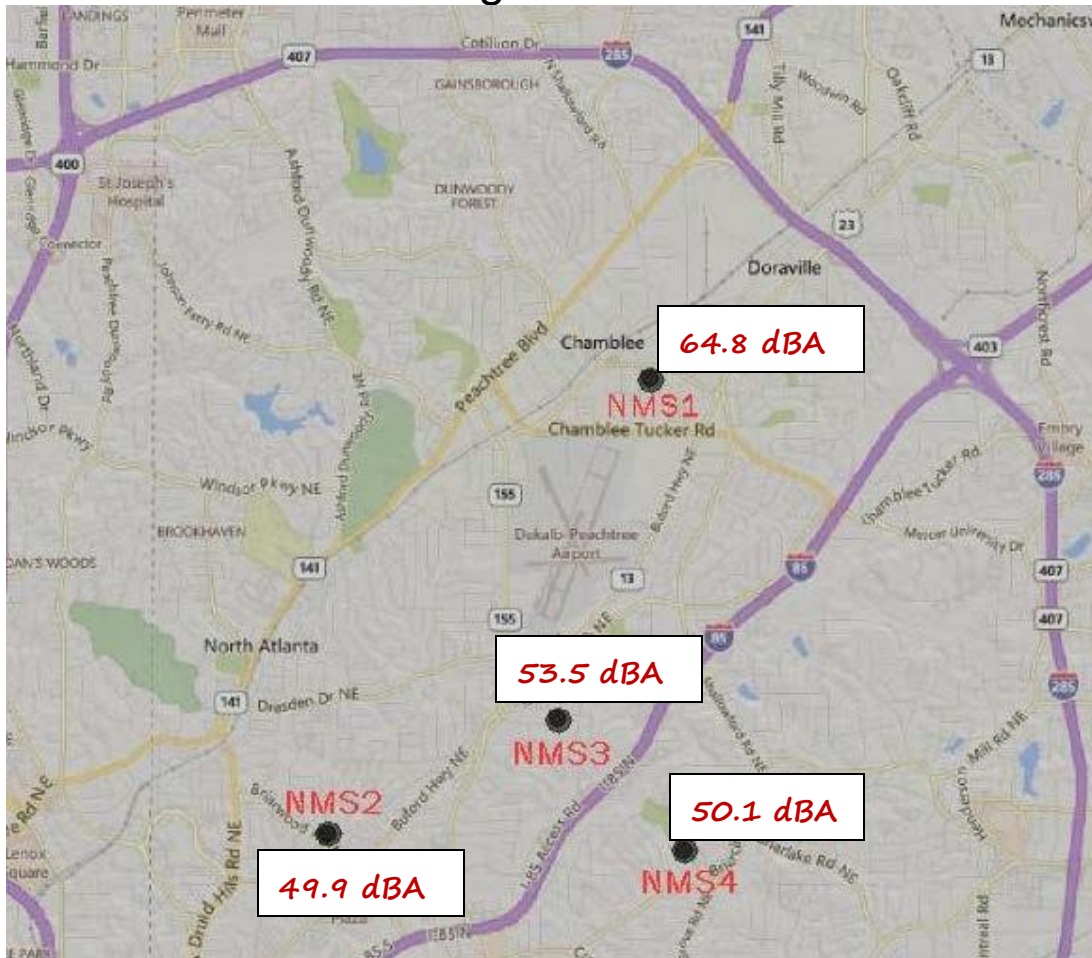


11+ Complaints

Complainants with Complaints Total (0 Complainants outside of DeKalb County)

Monthly Noise Levels at Monitors

August 2019



Noise Terminology

- *Decibels (dB) are the unit of measurement on the loudness scale. Decibels that a human can hear are called “A-weighted” or “dBA” on the sound frequency scale.*
- *The decibel scale is logarithmic, not linear. The smallest detectable change 1 dB; 3 dB for a human is readily detectable; 10 dB seems twice as loud.*
- *L_{max} – The maximum A-weighted sound level for a given event – the highest level registered on the scale or meter; is not related to the duration for the event.*
- *DNL – A 24-hour time-averaged sound exposure level. It is the noise metric of choice in aircraft sound level measurement. It is also used to define noise contours of equal exposure. All Federal agencies have adopted DNL (LDNA) as the metric for airport noise analysis. (Day Night Level) (Day Night Level A-weighted)*
- *Leq – The steady A-weighted sound level over any specified period. It is used to identify the average sound level over a given period of time.*

Voluntary Curfew Operations & Operators Summary/Letter Status

Operations Summary:

The airport identified a total of **361 (96%)** of the **375** operations during the voluntary curfew period (11PM-6AM) during the month of **August 2019**. Of the **361** identified operations, **280 (77.6%)** were classified as **medical transport (e.g., MedEvac) or other critical flights**.

- Out of the *identified* operations, **92 one-time** operations were conducted during this period.
- Out of the *identified* operations, **283 multi-time** operations were conducted during this period, (i.e., sum of all aircraft operations in which an aircraft flew more than once during the voluntary curfew).

Operators Identified / Multi-Use:

143 operators were identified using the airport during the voluntary curfew period (does not include unknown aircraft).

51 operators were identified using the airport during the voluntary curfew period for 2 or more times during the month.

50 multi-use operators were identified as MedEvac and/or emergency flights.

Complaints received from operations conducted during the voluntary curfew period:

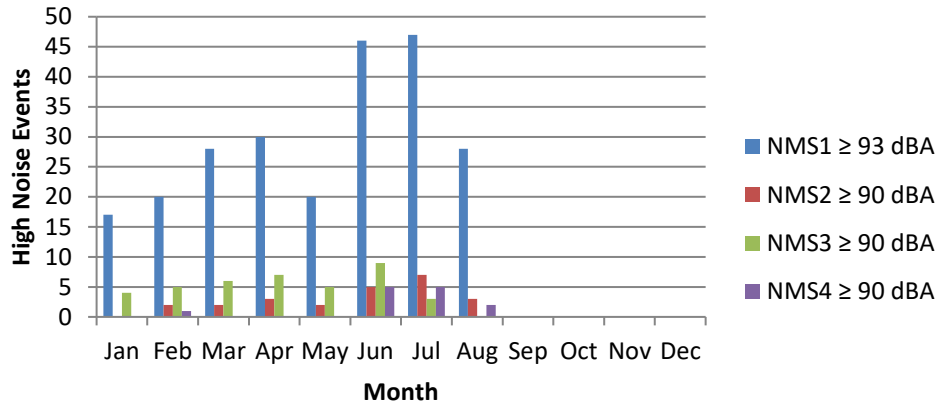
270 complaints were received during **August 2019**.

114 complaints were received for operations conducted during the voluntary curfew period (**including** those complaints that were found to be non-correlated or indirect).

High Noise Event Threshold

The high noise event threshold was developed to work with pilots in methods and techniques that could reduce aircraft noise levels in and around PDK and its residential areas. Noise Monitoring Station (NMS) 1 is located in a commercial district and is set at **93 dBA Lmax** or greater. All other monitors, NMS2, 3, & 4 are located in residential areas and are set at **90 dBA Lmax** or greater. .

High Noise Events 2019



Comments/Concerns?

Please visit www.pdkairport.org for airport information. You may also contact the airport about noise concerns at pdknoise@dekalbcountyga.gov or call the noise hotline at (770) 936-5442.