

Monthly Noise Report

June 2019

Prepared by:
Korey Barnes
Environmental & Noise Analyst



Introduction:

DeKalb-Peachtree Airport (PDK) is located in a highly noise-sensitive area as it is surrounded by residential communities. Aircraft noise is noise pollution generated by an aircraft, and may occur during all phases of flight. For instance, while aircraft are on the ground, taxiing, operating auxiliary power units (APUs), and conducting run-ups may contribute noise pollution to the surrounding areas. While aircraft are in the air, noise pollution can occur underneath and to the sides of departure and arrival paths.

The primary goal of the **PDK Good Neighbor Program** is to serve as a community-based program with aims to reduce aircraft noise levels in the vicinity of the airport. Since its inception, the program has sought to increase awareness of airport operations and develop airport/community partnerships with the surrounding cities of Chamblee, Doraville, Dunwoody, Brookhaven, North Atlanta (including the Buckhead community), and others. The program is a multifaceted one that uses many approaches to convey information in a succinct manner.

The program strives to reduce overall aircraft noise disturbances by soliciting airport-user involvement. Community and airport participation, learning, and cooperation are the keys to the program's success.

This report provides a monthly summary of airport operations, noise disturbances, and impacts to the surrounding neighborhoods to airport users and the surrounding communities.

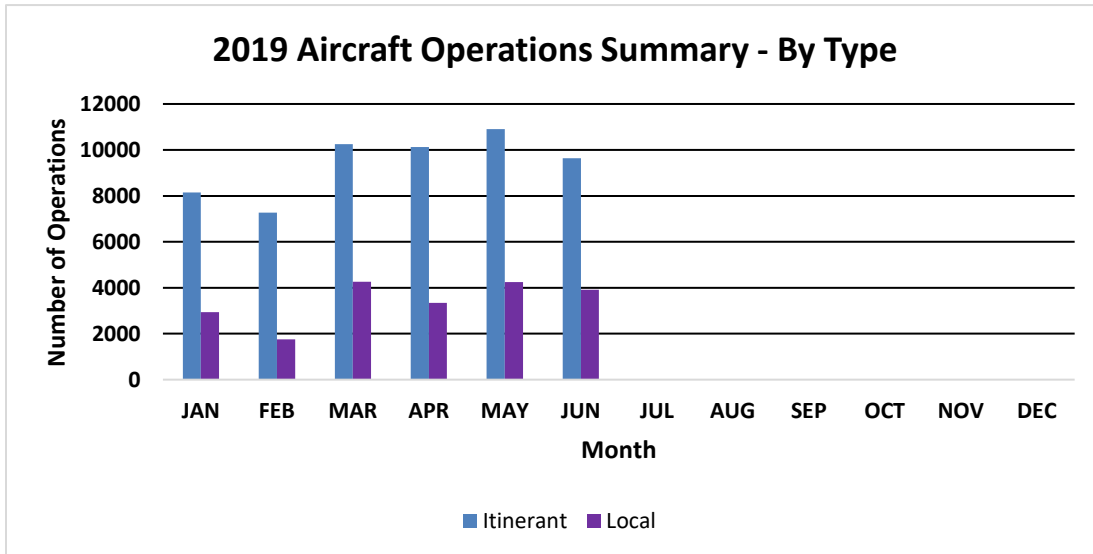
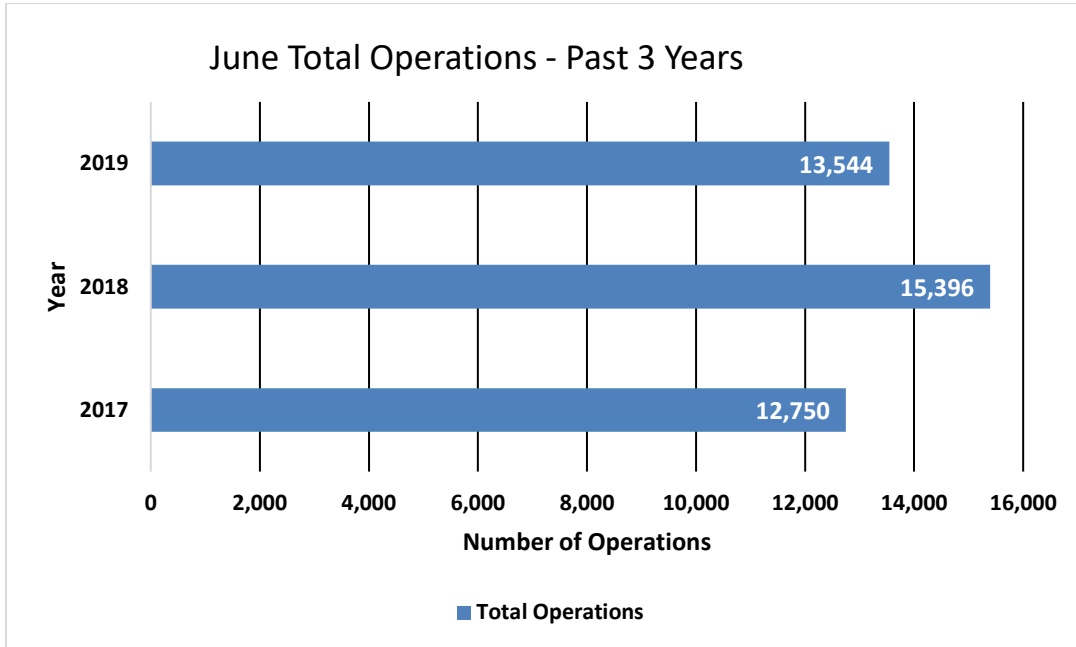
June 2019 Aircraft Operations:

	This Month	This Month, Last Year (June 2018)	% Change from June 2018	5-Year Average for Month
Total Operations	13,544	15,396	-12.03	13,683
Itinerant	9,634	10,293	-6.40%	9,812
Local	3,910	5,103	-23.38%	3,853
Voluntary Curfew Ops	361	348	3.74%	328
Prior Authorization	140	(0) Noise disturbance calls associated with these flights. (9) Voluntary curfew ops were associated with these flights.		

Prior Authorization
(Section 6-93 Code)
Operation
Itinerant
Local
Voluntary Curfew Ops

Aircraft certified by the FAA with a max gross take-off weight greater than 75,000 pounds
One take-off or landing. Touch-and-go counts as two operations
Non-touch-and-go (regular operations)
Operations within 20 miles of Airport
Operations that occur between the hours of 11:00 p.m. and 6:00 a.m.

June 2019 Aircraft Operations Summary



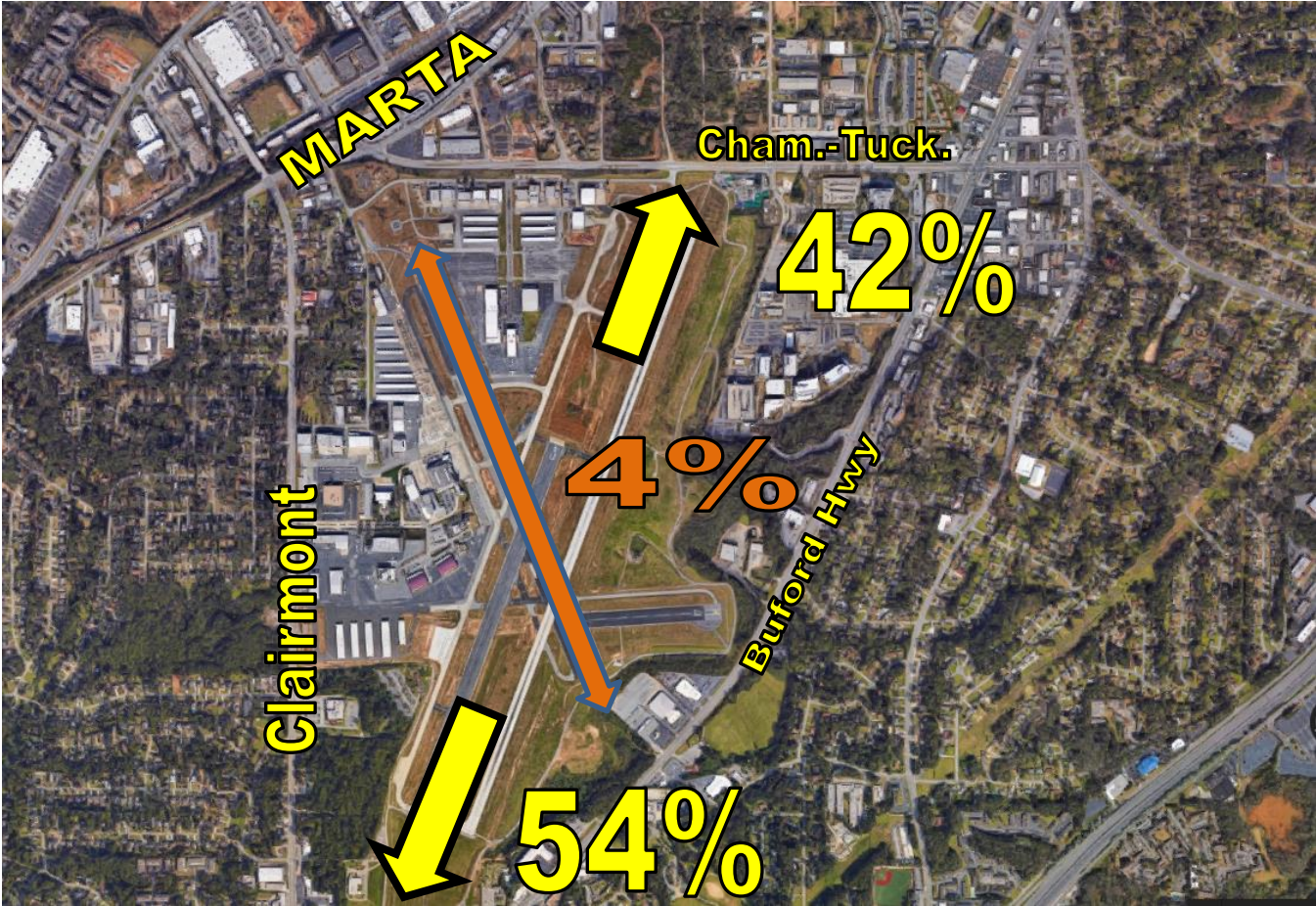
2018 Total Operations	2018 Total Operations as of June 2018	Total 2019 Ops as of June 2019
151,132	80,811	76,775 (-4.99%)

2019 Operations by Month

	Itinerant	Local	Total Tower-Recorded Operations	Voluntary Curfew
JAN	8,151	2,934	11,085	301
FEB	7,268	1,753	9,021	340
MAR	10,247	4,259	14,506	323
APR	10,119	3,347	13,466	346
MAY	10,904	4,249	15,153	358
JUN	9,634	3,910	13,544	315
JUL				
AUG				
SEPT				
OCT				
NOV				
DEC				

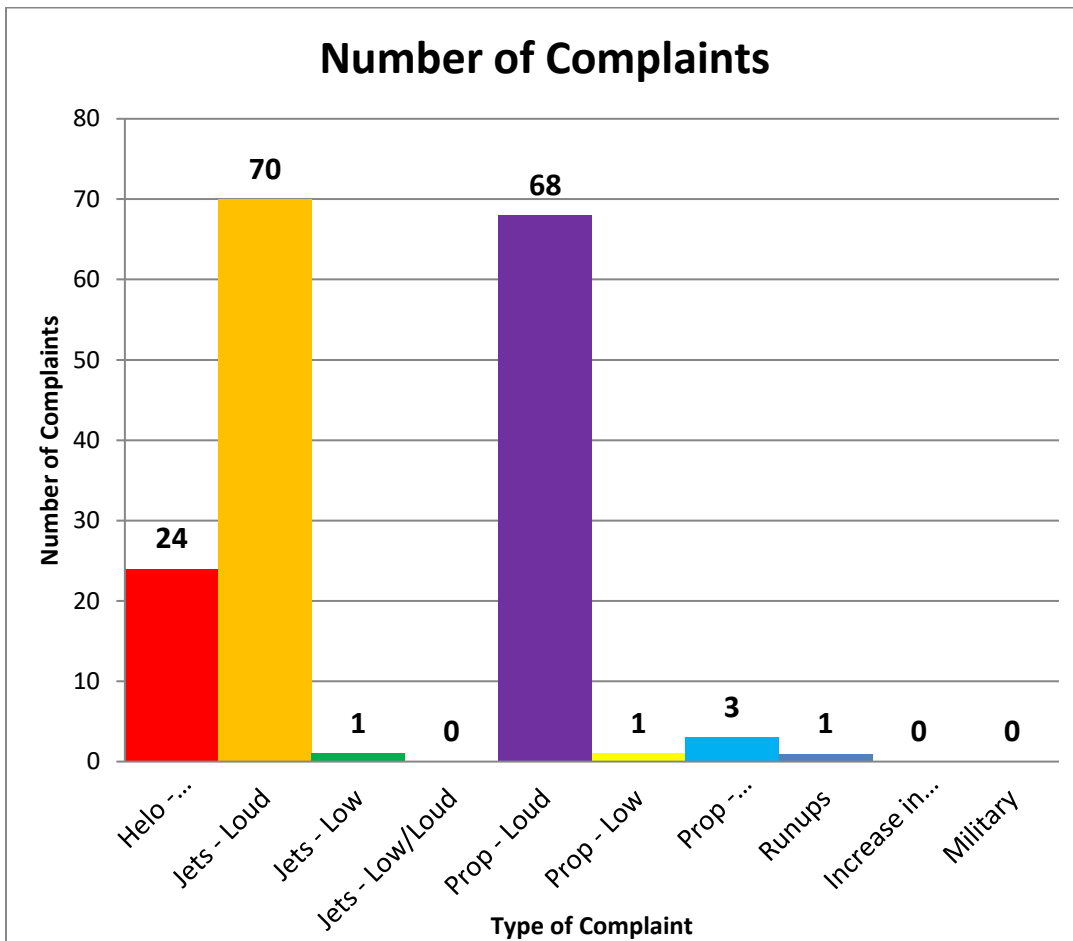
Runway Mode of Operations – June 2019

Directional use of runways has a major effect on flight patterns and the areas affected by flight operations. Weather and wind direction generally determines runway selection. When the tower is open, the FAA Air Traffic Control Tower determines the directional use of the runways. When possible, the tower will try to keep operations on a northbound flow (takeoffs and landings to the north) for noise abatement.

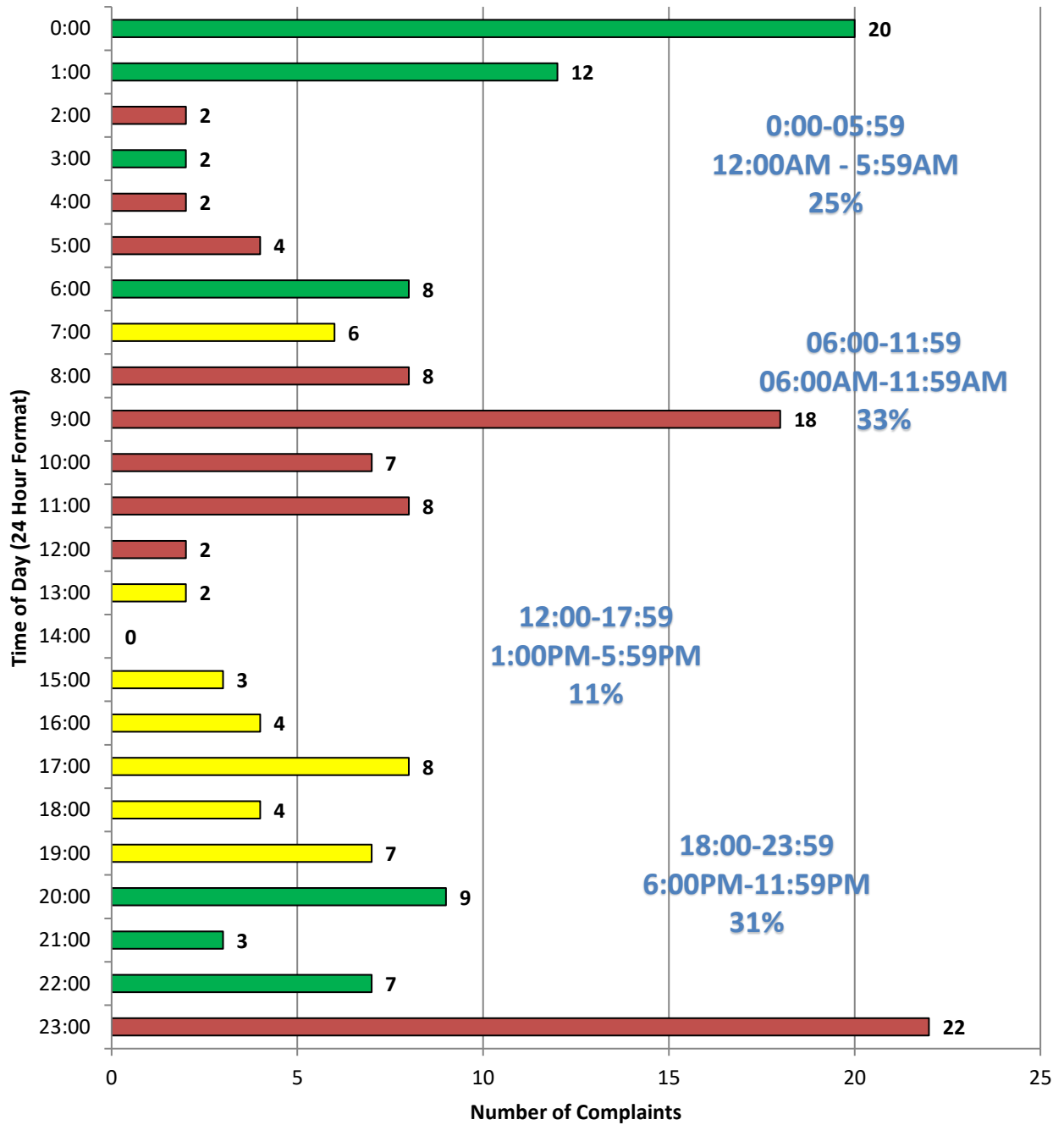


Noise Disturbance Summary

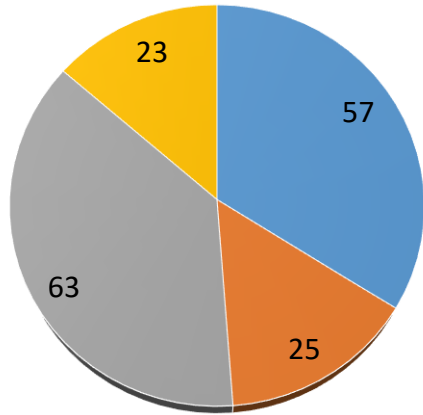
Total complaints for June 2019	Monthly Complaint Average 2019	June 2019 Complaints per Household <i>(minus top two/Households)</i>	June 2019 Complaints per Household <i>All Inclusive</i>
168	343	4.9	8.4



Number of Complaints by Hour



Complaints



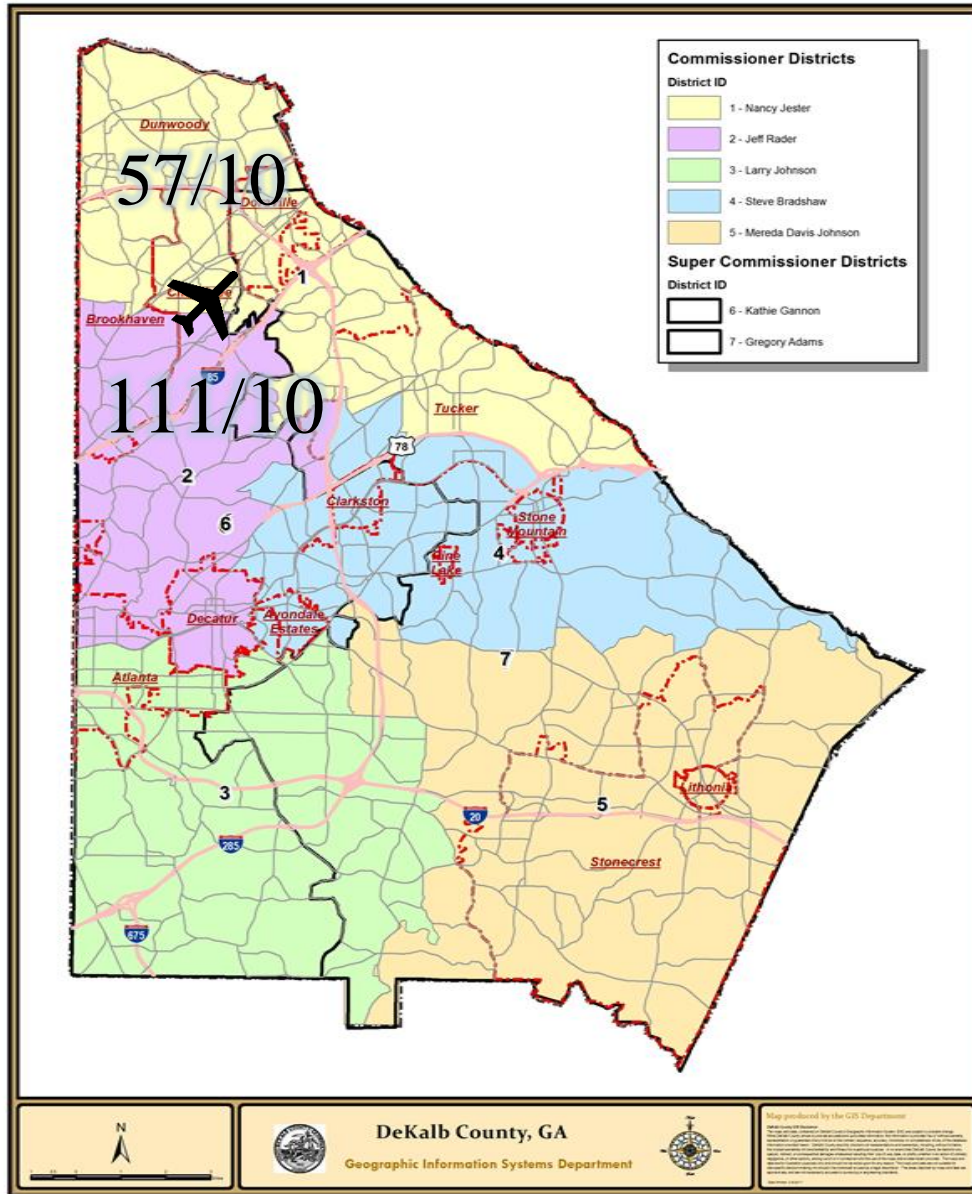
■ 30319
 ■ 30341
 ■ 30345
 ■ 30340

Zip Code Guide		
Zip Code	Community	% of Complaints
30319	Brookhaven	33.93%
30341	Chamblee - North	14.88%
30345	Chamblee – South	37.50%
30340	Doraville	13.69%

Complaints by Caller

Name	Address	City	Zip Code	# of Complaints
Snyder	3439 Allison Dr	Doraville	30340	25
Feldman	2376 Arrow Cir	Atlanta	30341	28
Rogers	2653 Warwick Cir NE	Chamblee	30345	2
Heerink	N/A	Chamblee	30341	1
Doyle	2541 Dering Pl NE	Atlanta	30345	5
Philips	2442 Wentworth Dr NE	Atlanta	30345	10
Hunnicut	2132 Meadowcliff Dr NE	Atlanta	30345	2
Mosler	1918 Gregory Run NE	Chamblee	30345	1
Terry	2652 Cove Circle NE	Atlanta	30319	2
Blackwell	2679 Warwick Circle NE	Chamblee	30345	1
Yates	1889 9th Street	Chamblee	30341	6
Sheffield	1920 Gainsborough Drive	Chamblee	30341	1
Runestad	2430 Field Way	Brookhaven	30319	3
Penn	3039 Skyland Dr NE	Chamblee	30341	1
Anon- 1	2486 Skyland Trail NE	Atlanta	30319	52
Adams	1979 Continental Dr NE	Atlanta	30345	1
Davidian	1806 Duke Road	Chamblee	30341	1
Anon - 2	3203 Stratford Arms Dr	Chamblee	30341	23
Hamilton	3029 Skyland Dr.	Chamblee	30341	2
Fox	2423 Woodacres Rd NE	Atlanta	30345	1

Complaints per Commission District






Total Number of Complaints
Total Number of Complainants

168/
20

There were 0 complainant(s) outside of DeKalb County with 0 complaint(s) total.

Correlation Chart of Noise Complaints to Operations

Chart Legend:

-  = Complaint + high noise event
-  = Complaint + PDK curfew operation
-  = Complaint + high noise + PDK curfew operation

The airport correlated **166 (98.81%)** out of **168** complaints:

- **164 or 97.62%** of the noise complaints were found to be **Direct** correlations
- **2 or 1.19%** were **Indirect** correlations to operations
- **2 or 1.19%** were **Not Correlated**.

- **Direct** = *Linked to a specific flight operation to/from PDK over a house/monitor (NOMS or manual correlation).*
- **Indirect** = *Not linked to a specific flight operation (take-off thrust, reverse thrust; maintenance run-ups) OR flight operation not originating or terminating at PDK.*
- **Not correlated** = *There was no noise event and/or aircraft track based on either NOMS correlation or manual research.*

Definitions:

NOMS: Noise and Operations Monitoring System

Op Type: Operation; Approach, Departure, or Overflight

Name: Name of Complainant

Offense Start: Date/Time of offense to complainant

Flight ID: Tail number of aircraft or military call sign

Flight Time: Actual Date/Time of correlated offense

NMS: Noise Monitoring Station

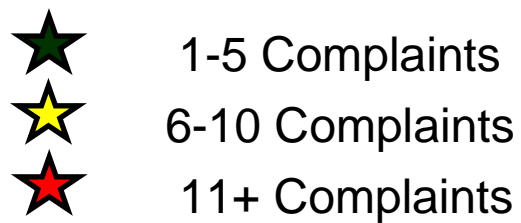
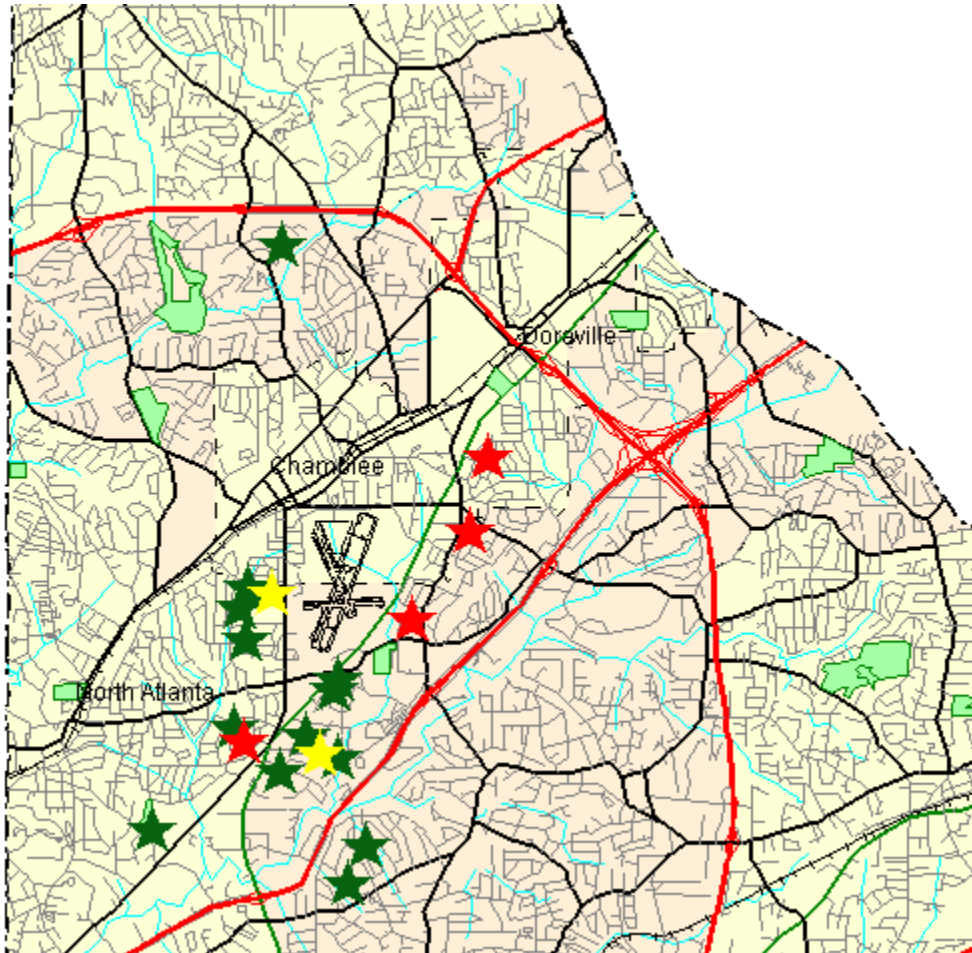
Rwy: Runway

LMAX: Maximum A-weighted sound level for a given event

Please contact: *Korey Barnes, Airport Noise and Environmental Analyst*, for more information regarding the PDK Good Neighbor Program at (770) 936-5440 or kbarnes@dekalbcountyga.gov.

PDK maintains a **hotline** that permits residents to report noise concerns by dialing: **(770) 936-5442** or e-mailing: pdknoise@dekalbcountyga.gov.

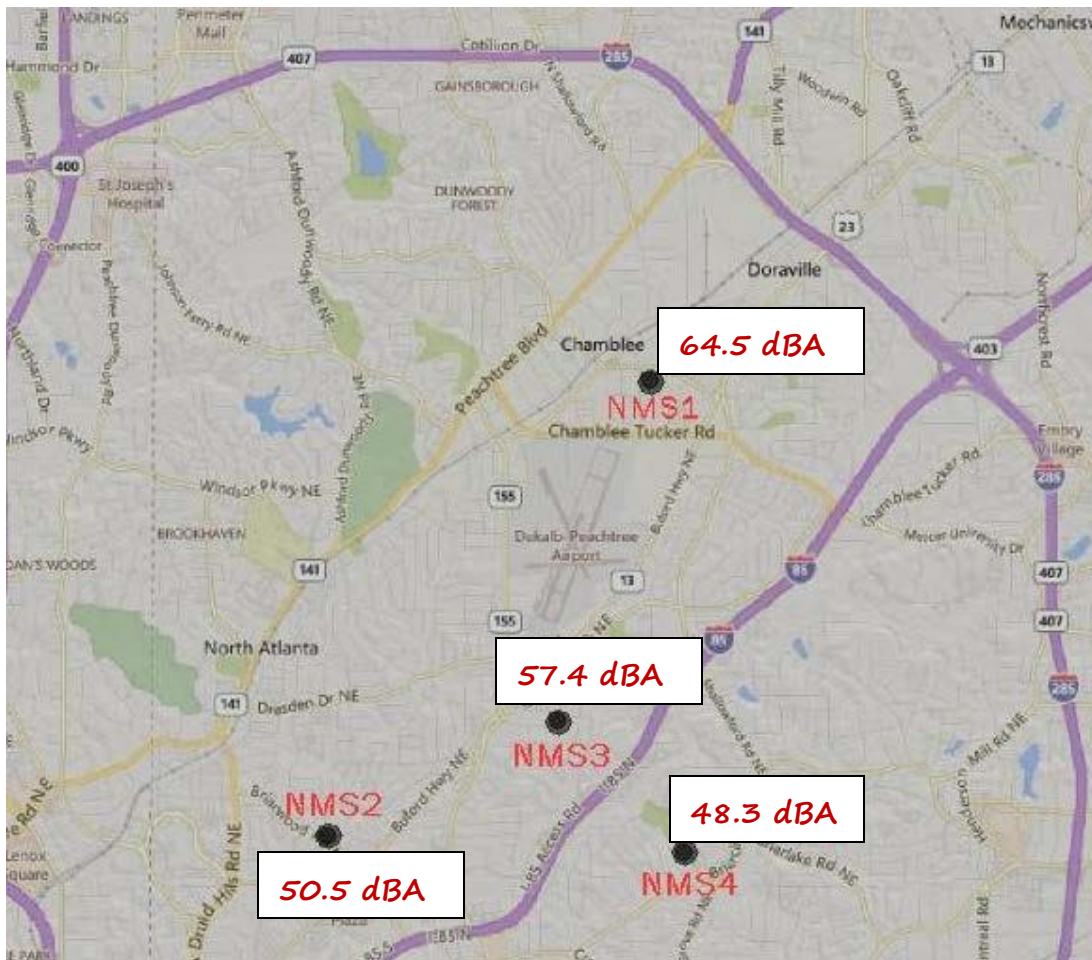
Disturbance Location Pin Map – June 2019



Complainants with Complaints Total (0 Complainants outside of DeKalb County)

Monthly Noise Levels at Monitors

June 2019



Noise Terminology

- *Decibels (dB) are the unit of measurement on the loudness scale. Decibels that a human can hear are called “A-weighted” or “dBA” on the sound frequency scale.*
- *The decibel scale is logarithmic, not linear. The smallest detectable change 1 dB; 3 dB for a human is readily detectable; 10 dB seems twice as loud.*
- *L_{max} – The maximum A-weighted sound level for a given event – the highest level registered on the scale or meter; is not related to the duration for the event.*
- *DNL – A 24-hour time-averaged sound exposure level. It is the noise metric of choice in aircraft sound level measurement. It is also used to define noise contours of equal exposure. All Federal agencies have adopted DNL (LDNA) as the metric for airport noise analysis. (Day Night Level) (Day Night Level A-weighted)*
- *Leq – The steady A-weighted sound level over any specified period. It is used to identify the average sound level over a given period of time.*

Voluntary Curfew Operations & Operators Summary/Letter Status

Operations Summary:

The airport identified a total of **347 (96%)** of the **361** operations during the voluntary curfew period (11PM-6AM) during the month of **June 2019**. Of the **347** identified operations, **271 (78.1%)** were classified as **medical transport (e.g., MedEvac) or other critical flights**.

- Out of the *identified* operations, **87 one-time** operations were conducted during this period.
- Out of the *identified* operations, **260 multi-time** operations were conducted during this period, (i.e., sum of all aircraft operations in which an aircraft flew more than once during the voluntary curfew).

Operators Identified / Multi-Use:

138 operators were identified using the airport during the voluntary curfew period (does not include unknown aircraft).

51 operators were identified using the airport during the voluntary curfew period for 2 or more times during the month.

19 multi-use operators were identified as MedEvac and/or emergency flights.

Complaints received from operations conducted during the voluntary curfew period:

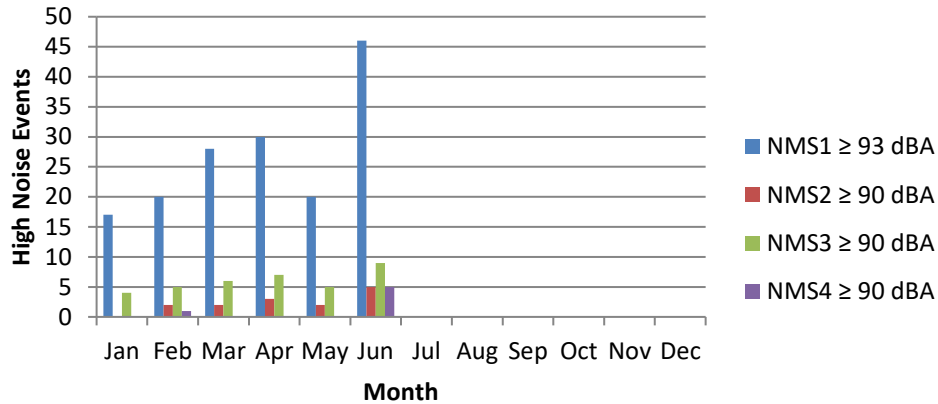
168 complaints were received during **June 2019**.

62 complaints were received for operations conducted during the voluntary curfew period (**including** those complaints that were found to be non-correlated or indirect).

High Noise Event Threshold

The high noise event threshold was developed to work with pilots in methods and techniques that could reduce aircraft noise levels in and around PDK and its residential areas. Noise Monitoring Station (NMS) 1 is located in a commercial district and is set at **93 dBA Lmax** or greater. All other monitors, NMS2, 3, & 4 are located in residential areas and are set at **90 dBA Lmax** or greater. .

High Noise Events 2019



Comments/Concerns?

Please visit www.pdkairport.org for airport information. You may also contact the airport about noise concerns at pdknoise@dekalbcountyga.gov or call the noise hotline at (770) 936-5442.