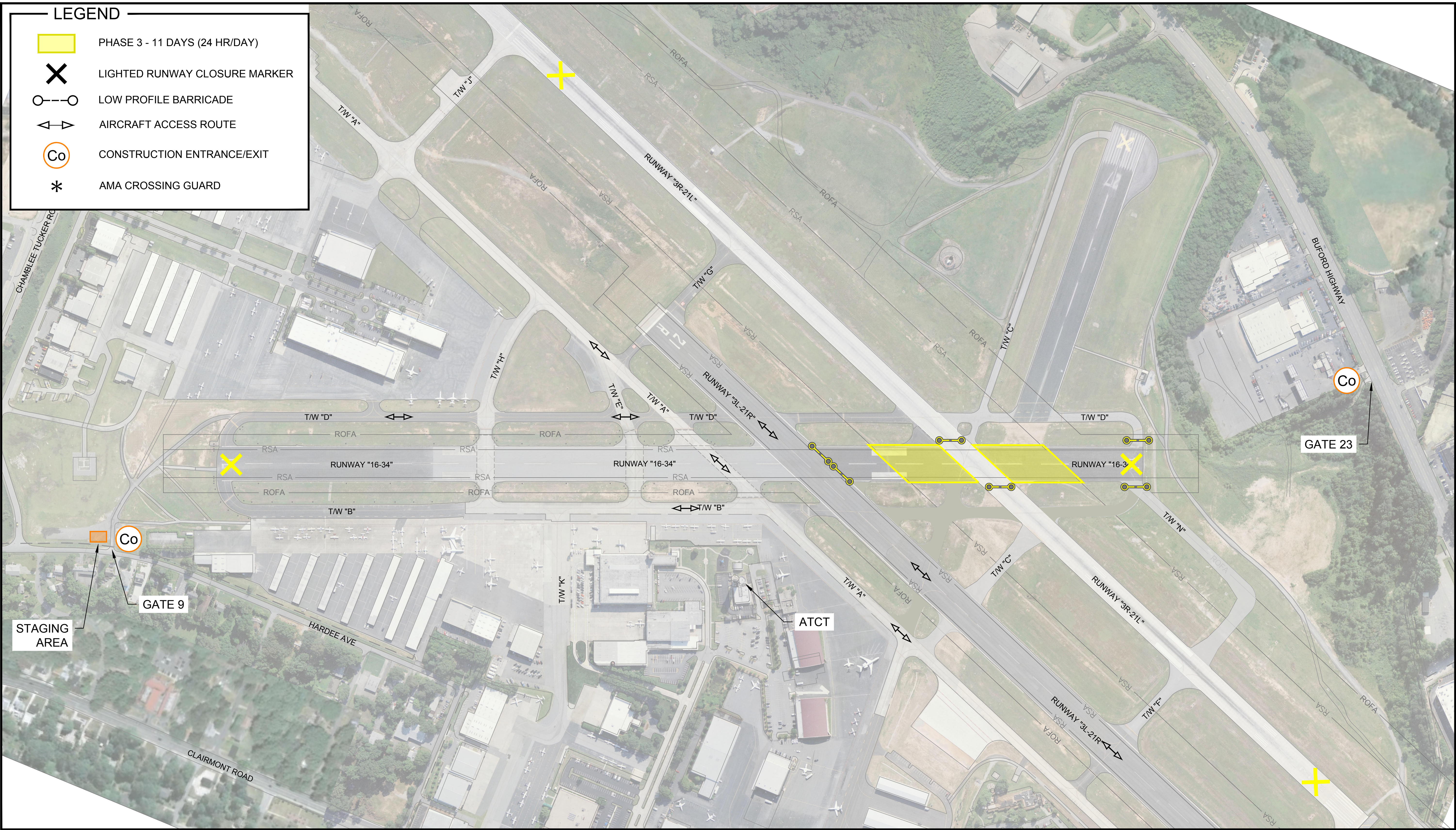


Y:\Airports\PK\185092 - WA 18-17 - RWY 16-34 Rehab and RSA Design\Design\Exhibits\Master Phasing.dwg Plotted on: Mar 01, 2023 - 3:54pm



**LEGEND**

- PHASE 3 - 11 DAYS (24 HR/DAY)
- X LIGHTED RUNWAY CLOSURE MARKER
- LOW PROFILE BARRICADE
- AIRCRAFT ACCESS ROUTE
- Co CONSTRUCTION ENTRANCE/EXIT
- \* AMA CROSSING GUARD

**Michael Baker**  
INTERNATIONAL

DEKALB PEACHTREE AIRPORT  
DEKALB COUNTY, GEORGIA

PHASE 3

EXHIBIT 1  
1" = 200'

