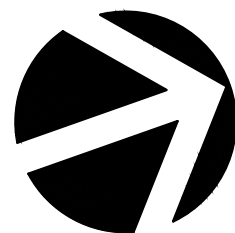
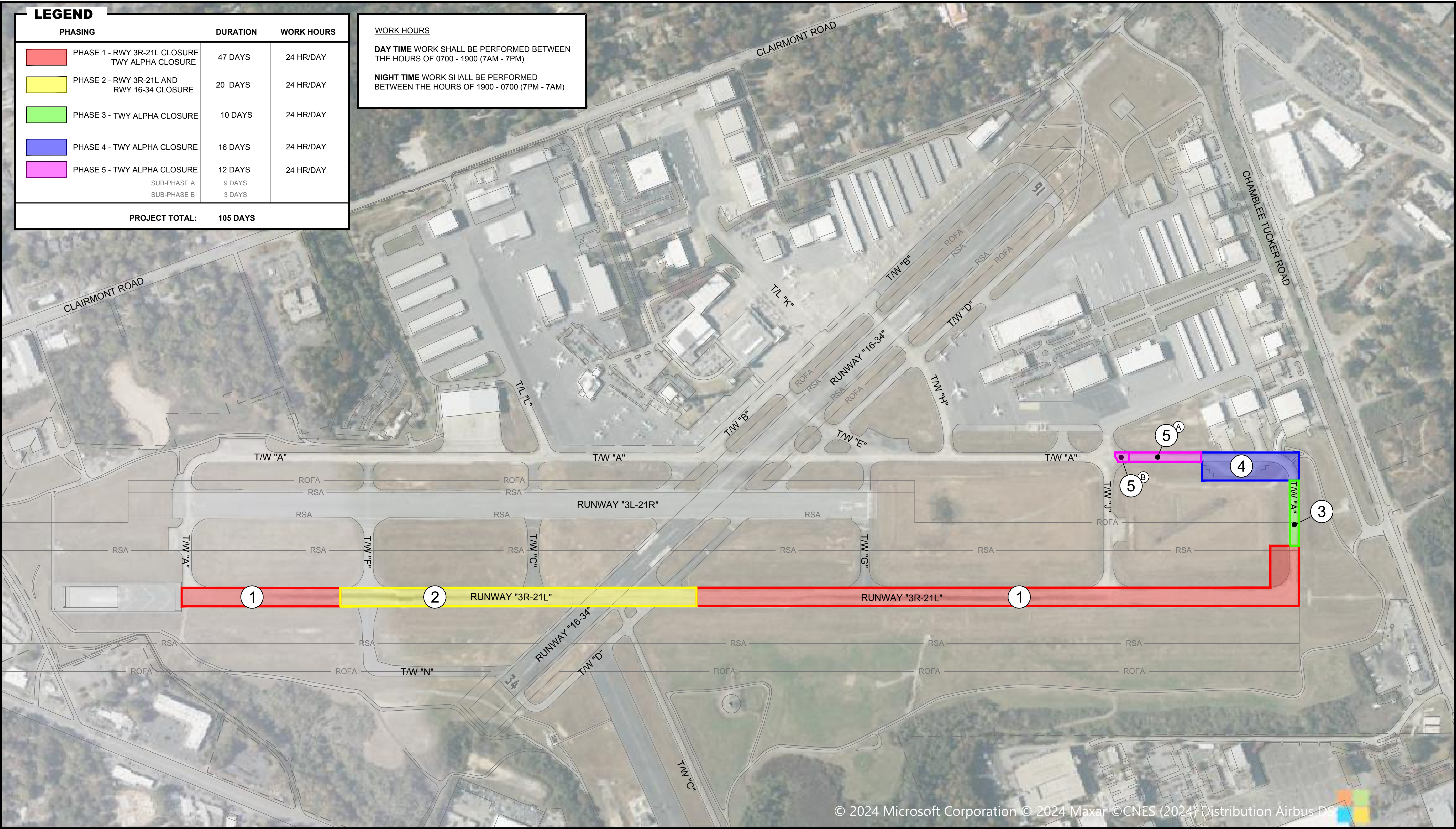


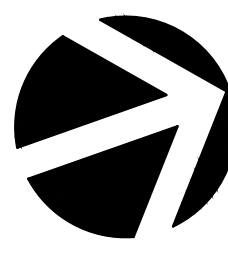
Y:\Airports\PDk\189360 - WA 18-21 - RWY 3R-21L Keel Replacement - Design\Design\Dwg\Exhibits\Tenant Phasing\PDk_3R-21L Keel Phasing Overall.dwg Plotted on: Aug 01, 2025 - 3:34pm



Y:\Airports\PDk\189360 - WA 18-21 - Rwy 3R-21L Keel Replacement - Design\Design\Drawings\Exhibits\Tenant Phasing\Phasing Breakdown.dwg Plotted on: Aug 01, 2025 - 3:47pm



Michael Baker
INTERNATIONAL




DEKALB PEACHTREE AIRPORT
DEKALB COUNTY, GEORGIA
3R-21L KEEL REPLACEMENT - PHASE 1

EXHIBIT
1" = 250'



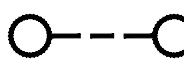
WORK HOURS 24 HR/DAY



 PHASE 2 - 20 DAYS (24 HR/DAY)



TEMPORARY BATCH PLANT AREA



BARRICADE



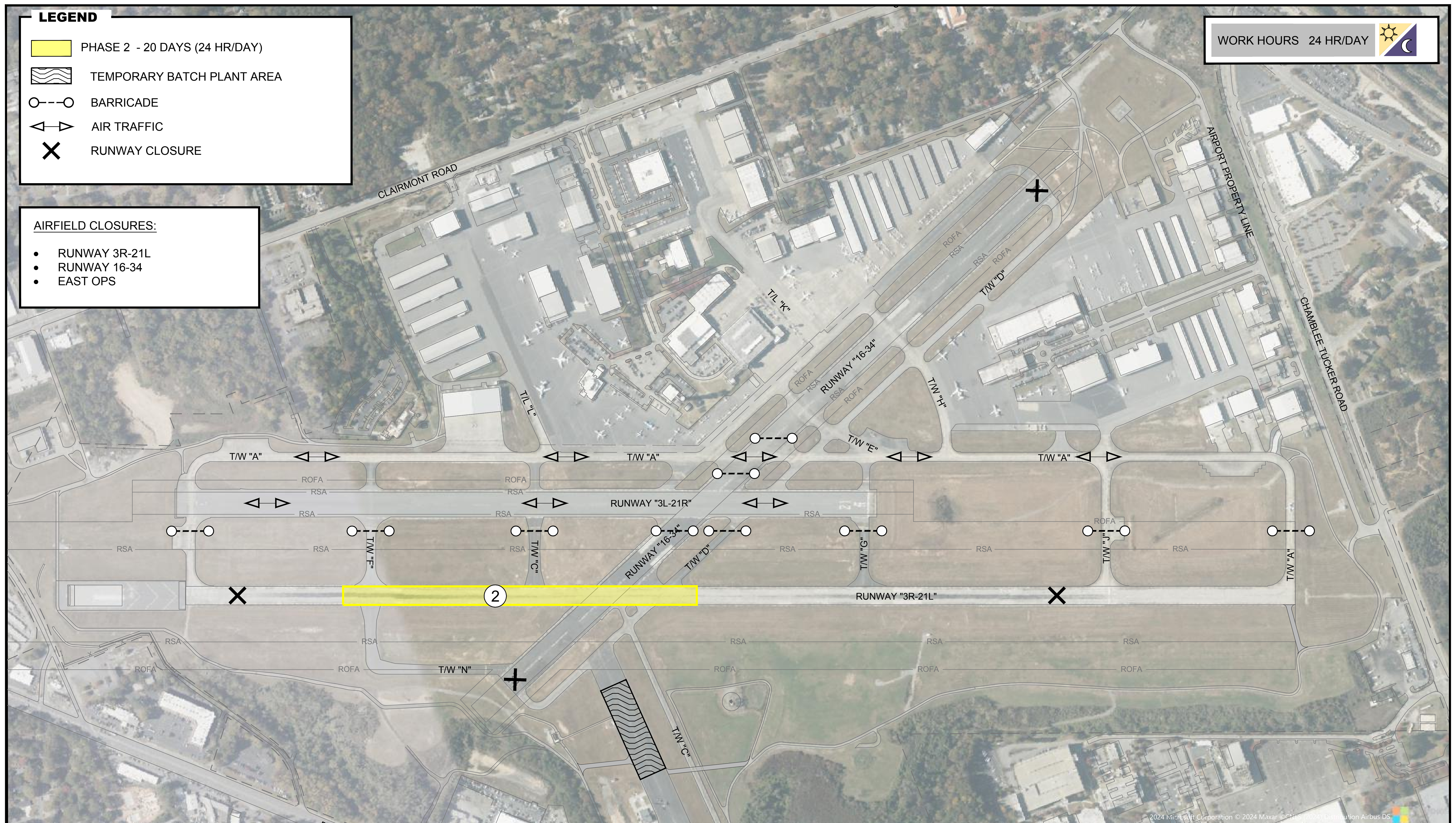
AIR TRAFFIC



RUNWAY CLOSURE

AIRFIELD CLOSURES:

- RUNWAY 3R-21L
- RUNWAY 16-34
- EAST OPS



Michael Baker
INTERNATIONAL



DEKALB PEACHTREE AIRPORT
DEKALB COUNTY, GEORGIA

3R-21L KEEL REPLACEMENT - PHASE 2

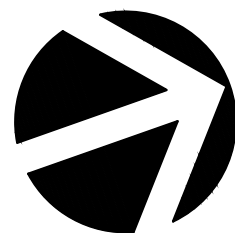
EXHIBIT
1" = 250'



Y:\Airports\PDk\189360 - WA 18-21 - Rwy 3R-21L Keel Replacement - Design\Design\Drawings\Exhibits\Tenant Phasing\3R-21L Keel Phasing Breakdown.dwg Plotted on: Aug 01, 2025 - 3:43pm



Michael Baker
INTERNATIONAL



DEKALB PEACHTREE AIRPORT
DEKALB COUNTY, GEORGIA
3R-21L KEEL REPLACEMENT - PHASE 4

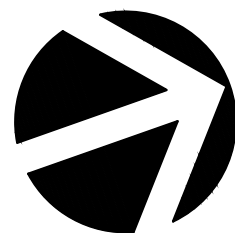
EXHIBIT
1" = 250'



Y:\Airports\PDk\189360 - WA 18-21 - Rwy 3R-21L Keel Replacement - Design\Design\Drawings\Exhibits\Tenant Phasing PDK_3R-21L KEEL Phasing Breakdown.dwg Plotted on: Aug 01, 2025 - 3:43pm



Michael Baker
INTERNATIONAL

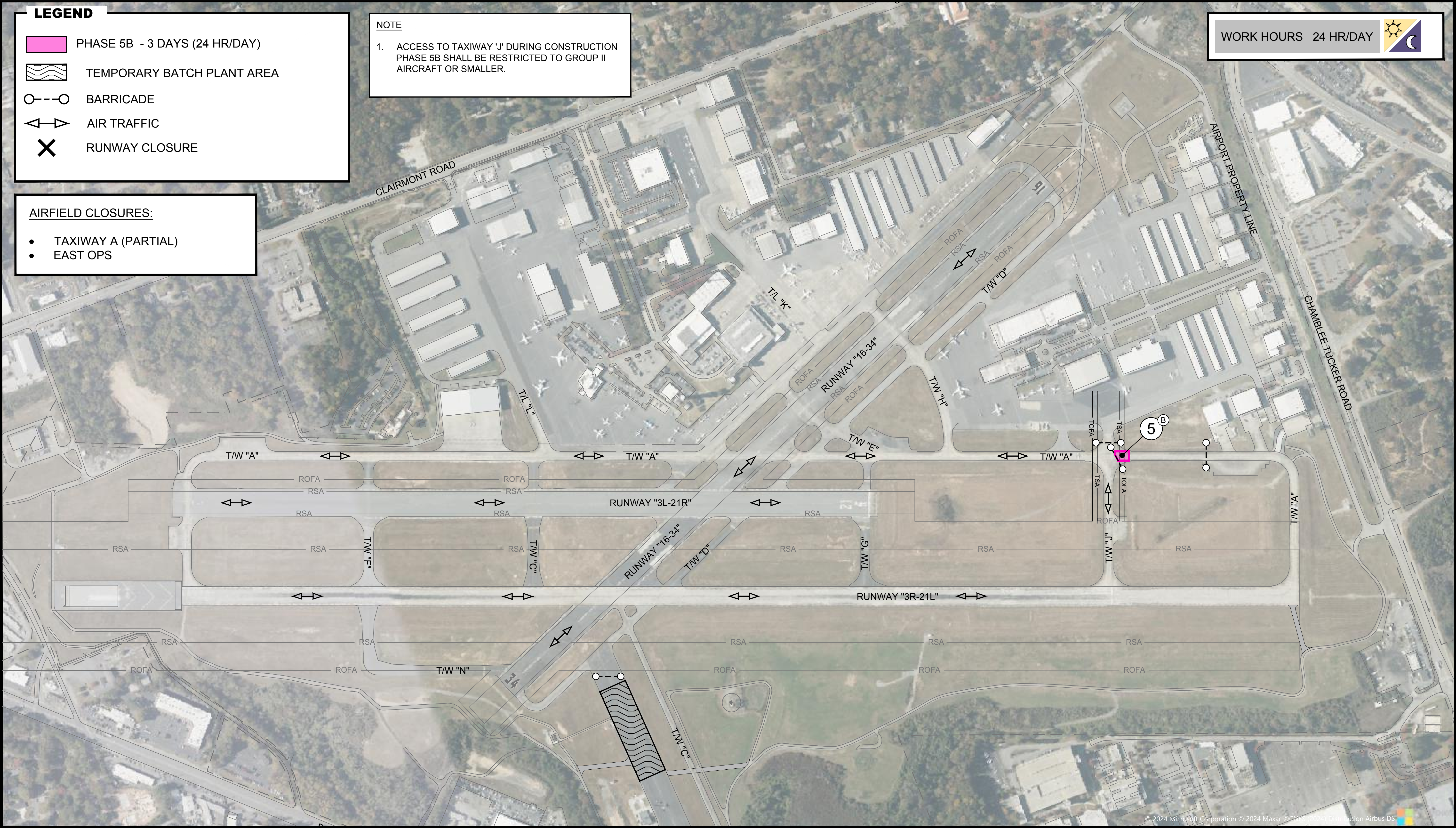


DEKALB PEACHTREE AIRPORT
DEKALB COUNTY, GEORGIA
3R-21L KEEL REPLACEMENT - PHASE 5A

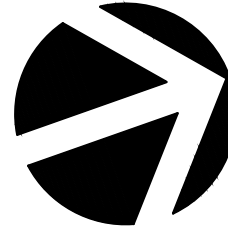
EXHIBIT
1" = 250'



Y:\Airports\PDk\189360 - WA 18-21 - Rwy 3R-21L Keel Replacement - Design\Design\Drawings\Exhibits\Tenant Phasing\Phasing Breakdown.dwg Plotted on: Aug 01, 2025 - 3:43pm



Michael Baker
INTERNATIONAL



DEKALB PEACHTREE AIRPORT
DEKALB COUNTY, GEORGIA
3R-21L KEEL REPLACEMENT - PHASE 5B

EXHIBIT
1" = 250'

