

# CONSENT DECREE MODIFICATION AND THE CAPACITY ASSURANCE PROGRAM



January 18, 2022

# 1. CONTEXT

- 2017-2021
- Capacity Evaluation Protocol



DEKALB COUNTY GOVERNMENT  
WATERSHED DEPARTMENT

NOTICE OF PRIMARY  
SEWER SPILL

THE DATE THE SPILL OCCURRED: 02-13-2020

THE SPILL LOCATION: 2711 Foyles Dr

THE CAUSE OF THE SPILL: I & T

THE ESTIMATED VOLUME OF THE SPILL: 22.75

RECEIVING STREAM: Shoal Creek

EXPECTED ACTION TAKEN: Washed until cars

## VIII. Flowchart Depicting Sewer Capacity Protocol

### Interim Sanitary Sewer Capacity Protocol Flow Chart<sup>1</sup>

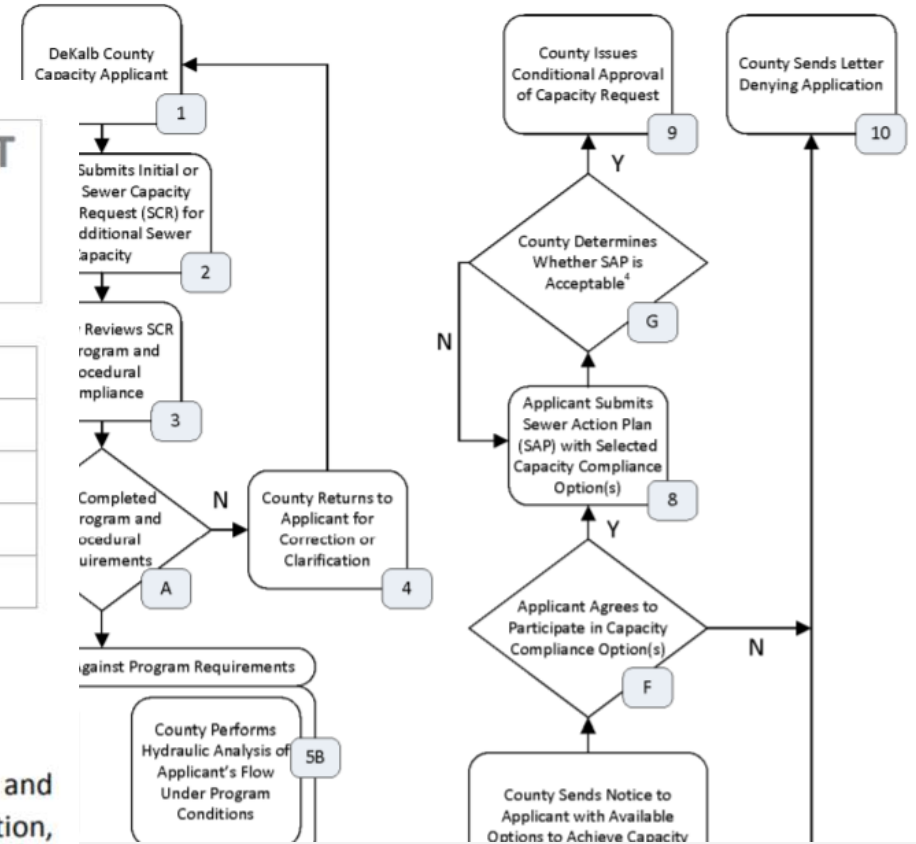


## DEPARTMENT OF WATERSHED MANAGEMENT INTERIM SANITARY SEWER CAPACITY EVALUATION PROGRAM

PROGRAM NUMBER:	CD-P-001
PROGRAM OWNER (Division/Office):	Infrastructure Acquisitions Program
PROGRAM APPROVAL:	DCOO/Infrastructure
PROGRAM LAST REVIEWED/UPDATED DATE:	12/15/2017
PROGRAM REVISION NUMBER:	1

### INTRODUCTION

DeKalb County (the "County") has a responsibility to use its best efforts to operate, maintain, and construct its sanitary sewer system in such a manner to achieve the goals of public health protection, full compliance with the Clean Water Act, the Georgia Water Quality Control Act, and the elimination of Sanitary Sewer Overflows ("SSOs"). The County is currently undertaking a combination of Capacity, Management, Operations, and Maintenance ("CMOM") programs and capital improvements under a Consent Decree to meet this responsibility. As part of this undertaking, the County is also planning for



# 2. CONSENT DECREE MODIFICATION



DEKALB COUNTY GOVERNMENT  
WATERSHED DEPARTMENT  
**NOTICE OF A SANITARY  
SEWER SPILL**

THE DATE THE SPILL OCCURRED: 02-13-2020  
THE SPILL LOCATION: 2711 Fieles Dr  
THE CAUSE OF THE SPILL: I & T  
THE ESTIMATED VOLUME OF THE SPILL: 22.75  
RECEIVING STREAM: Shoal Creek  
IMMEDIATE ACTION TAKEN: Wiped until cars

# Consent Decree Modification Details

- ▶ Implementation and use of dynamic models
- ▶ Inclusion of 103 repeat spill sites with a requirement that the majority be addressed within 4 years+
- ▶ Flexibility in allowing new connections with the addition of a Capacity Assurance Program
- ▶ Allowing credit for completed project phases means development can occur in Snapfinger basin before the end of the Consent Decree

Watershed Management

- Lifting The Disconnection Moratorium
- About Us >
- The New Day Project
- Billing >
- Capital Improvement Program >
- Consent Decree >

# Capacity Assurance Program



www.ustream.tv/channel/dctv-channel-23

	Backlog through Oct 2021			November 2021			December 2021
	Total Evaluated	Approved	Pending	Total Evaluated	Approved	Pending	Under Evaluation
<b>Nancy Creek</b>	36	26	10	5	3	2	1
<b>North Fork Peachtree Creek</b>	53	1	52	3	0	3	2
<b>South Fork Peachtree Creek</b>	65	5	60	1	0	1	5
<b>Intrenchment Creek</b>	22	2	20	0	0	0	5
<b>Snapfinger</b>	234	7	227	8	0	8	3
<b>Pole Bridge</b>	34	29	5	0	0	0	4
<b>Miscellaneous Sewersheds</b>	5	3	2	7	5	2	0
<b>Countywide Total</b>	449	73	376	24	8	16	20



# Capacity Evaluations

- ▶ Since 2016 - today, there have been 2,626 requests to connect to the sewer system
- ▶ 1,819 Full approvals
- ▶ 216 Conditional approvals
- ▶ 412 are pending or in progress
- ▶ 6 need corrections
- ▶ 116 cancelled



# 3. WHAT IS NEXT?



## Capacity Assurance Program

*Submitted to*

U.S. Environmental Protection Agency  
Georgia Environmental Protection Division

*Submitted by*

Department of Watershed  
Management  
DeKalb County, Georgia



Case No. 1:10 cv 4039-SDG

## Banking Credit System

As part of the Capacity Approval in Lieu of Certification Process described in Section 3.5, the County may use a "banking credit system" for the sewer line segment(s), LS(s), and/or WWTF for which the County is unable to certify adequate capacity.

The addition of sewer capacity and/or reduction in 1-hour peak flows from Capacity Enhancement Projects which are completed and in-use may be accumulated in the form of credits in the banking credit system in accordance with this document. The County may earn banking credits for phased Capacity Enhancement Projects, where permanent capacity is added to the WCTS from completion of a phase of such projects. For example, if a project has 10 phases, the County may earn banking credits upon completion of the first phase to the extent that permanent capacity is added to the WCTS based on that phase of the overall project. Credits from the banking credit system may then be used for authorization of new sewer service connections or increases in flow from existing connections within the hydraulically independent Sub-Model area where the project that earned the credits occurred.

The banking credit system may only be used after the County certifies to the EPA and EPD that the Information Management System described in Section 5.1 below is operational. Capacity Enhancement Projects completed after entry of the MCD may earn credits in the credit banking system as well as those Capacity Enhancement Projects completed after April 29, 2019.

### 5.1 Capacity Assurance Information Management System

The Capacity Assurance Program will utilize an information management system comprised of the County's CityWorks Computerized Maintenance Management System, the GIS, and other software to track and report sewer capacity request information. Additionally, the information management system will manage the recording and reporting of earned banking credits and the subsequent expenditure of those credits.

As part of the documentation to the EPA and EPD certifying that the information management system is operational, the County will provide a representative report of the data recorded from sewer capacity requests and from the banking credit system for EPA and EPD review.

As the County implements the information management system, the County may develop additional software solutions to further streamline and automate recording and reporting of CAP information.

### 5.2 Deposits

Capacity improvement documentation will be completed to deposit credits from projects as described in this section into the banking credit system. The guidelines presented in Section 5.3 shall be used along with engineering judgment when depositing credits into the system.

# QUESTIONS?

